

# AREA AVERAGE PRECIPITATION (mm) AND STANDARDIZED PRECIPITATION INDEX (SPI) PER HYDROLOGICAL REGION

MONTH: JUNE 2024

SPI VALUES ( According to WMO-No.1090)	
2.0 +	extremely wet
1.5 to 1.99	very wet
1.0 to 1.49	moderately wet
-0.99 to 0.99	near normal
-1.0 to -1.49	moderately dry
-1.5 to -1.99	severely dry
-2 and less	extremely dry

SPI VALUES ( According to Karavokyris & Partners)	
0 to -0.99	Mild drought
-1.0 to -1.49	Moderate drought
-1.5 to -1.99	Severe drought
-2 and less	Extreme drought

Hydrological Region	PRECIPITATION (mm)								DRY SPELLS		STANDARDIZED PRECIPITATION INDEX (SPI-n)								
	Monthly Area Aver. Precip.				Cumul. Area Aver. Precip.						Dry Spells Periods for selected Meteorological Rainfall Stations (Dry days: <=2.0 mm)	SPI-1	SPI-3	SPI-6	SPI-9	SPI-12	SPI-24	SPI-36	SPI-48
	Actual Precip. (mm)	Normal 1970-2010 (mm)	% of Normal	Deciles	Actual Cumul. Precip. (mm)	Normal Cumul. 1970-2010 (mm)	% of Normal	Deciles											
1-Pafos	2.3	6.2	38%	4	417.9	552.1	76%	2	094-Asprokremmos	30									
2-Polis	0.1	5.1	3%	2	415.0	531.7	78%	2	063-Evretou	30	-0.59	-0.51	-1.06	-1.00	-0.95	-0.73	-0.42	-0.95	-0.26
3-Morfo	1.2	11.7	10%	3	296.8	426.9	70%	1	370-Kapoura	30	-0.84	-0.13	-1.08	-1.25	-1.17	-0.87	-0.65	-1.17	-0.32
6-Lefkosia	2.6	11.9	22%	4	322.7	346.3	93%	5	565-Politiko(Tamasos)	21	-0.58	0.75	0.12	-0.15	-0.12	0.22	0.62	-0.12	0.31
7-Kokkinochoria	0.0	2.0	0%	1	264.4	323.6	82%	3	845-Frenaros	30	0.00	-0.58	0.55	-0.54	-0.53	0.04	-0.20	-0.73	0.04
8-Larnaka	1.4	7.7	18%	4	329.8	399.6	83%	3	592-Lefkara	30	-0.72	0.76	-0.10	-0.57	-0.36	-0.53	-0.12	-0.96	-0.19
9-Lemesos	2.7	7.1	39%	4	360.7	504.4	72%	1	313-Kouris	30	-0.28	0.05	-0.91	-1.23	-1.16	-1.07	-0.75	-1.49	-0.41
<b>CYPRUS</b>	<b>1.6</b>	<b>7.3</b>	<b>22%</b>	<b>3</b>	<b>350.4</b>	<b>455.4</b>	<b>77%</b>	<b>1</b>			<b>-0.70</b>	<b>0.00</b>	<b>-0.73</b>	<b>-0.98</b>	<b>-0.88</b>	<b>-0.72</b>	<b>-0.40</b>	<b>-1.13</b>	<b>-0.27</b>

**Note 1 (SPI According to):**

Desert Action, IES(Institute for Environment and Sustainability) and JRC (European Commission)

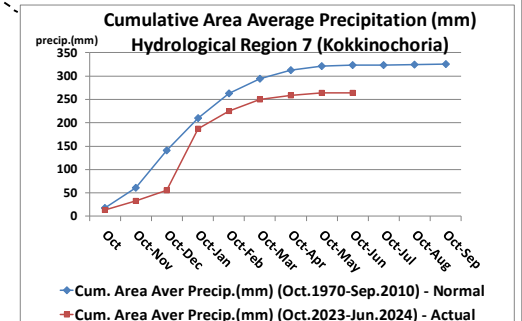
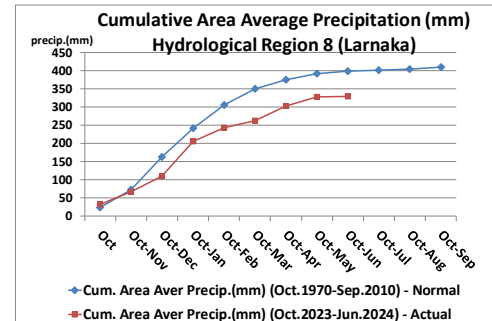
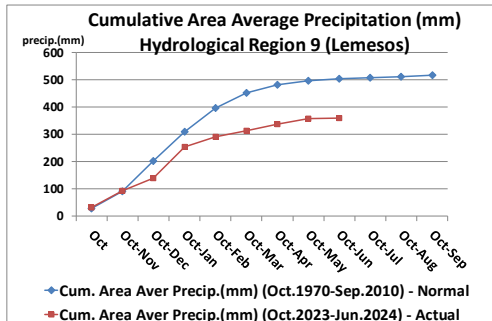
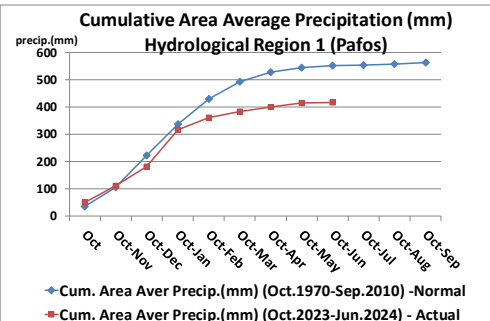
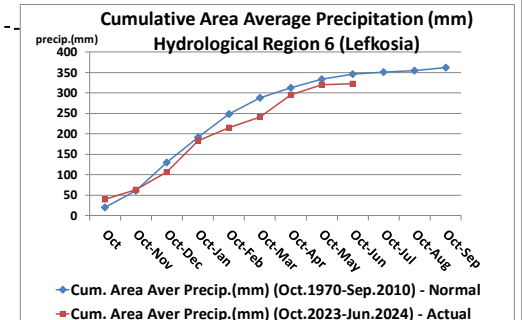
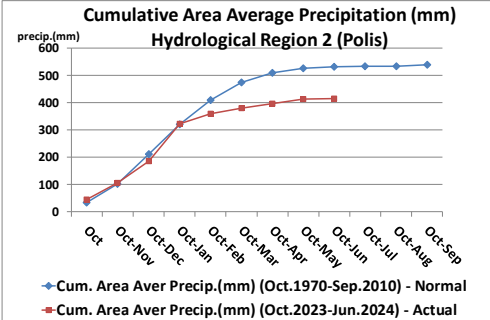
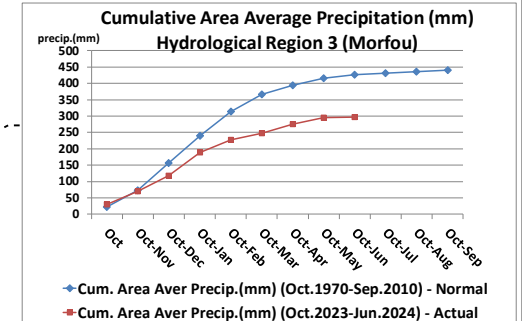
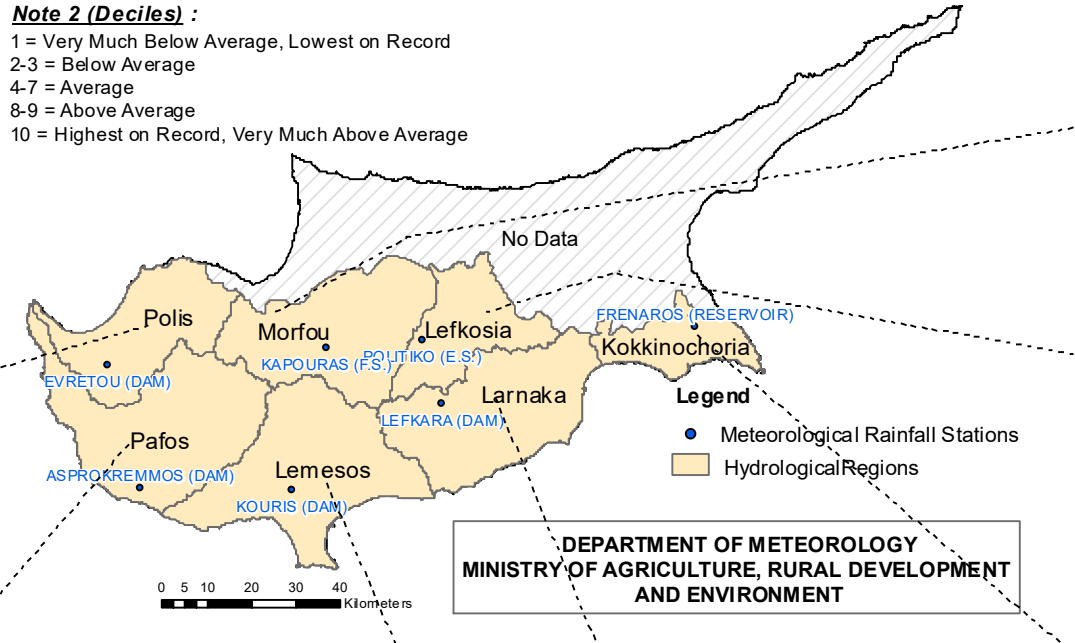
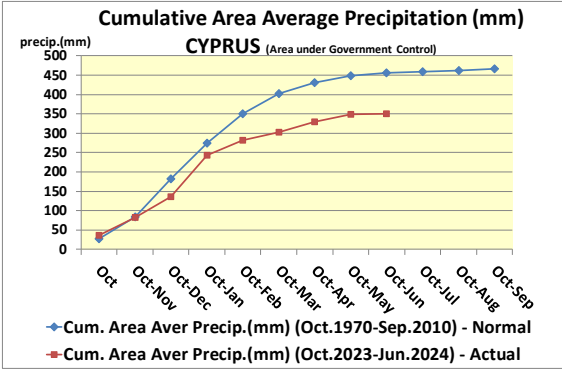
SPI-1 to SPI-3 are indicators for immediate impacts such as reduced soil moisture, snowpack, and flow in smaller creeks

SPI-3 to SPI-12 are indicators for reduced stream flow and reservoir storage

SPI-12 to SPI-48 are indicators for reduced reservoir and groundwater recharge

**Note 2 (Deciles) :**

- 1 = Very Much Below Average, Lowest on Record
- 2-3 = Below Average
- 4-7 = Average
- 8-9 = Above Average
- 10 = Highest on Record, Very Much Above Average



DEPARTMENT OF METEOROLOGY  
MINISTRY OF AGRICULTURE, RURAL DEVELOPMENT  
AND ENVIRONMENT