

AREA AVERAGE PRECIPITATION (mm) AND STANDARDIZED PRECIPITATION INDEX (SPI) PER HYDROLOGICAL REGION

MONTH: MARCH 2020

SPI VALUES (According to WMO-No.1090)	
2.0 +	extremely wet
1.5 to 1.99	very wet
1.0 to 1.49	moderately wet
-0.99 to 0.99	near normal
-1.0 to -1.49	moderately dry
-1.5 to -1.99	severely dry
-2 and less	extremely dry

SPI VALUES (According to Karavokyris & Partners)	
0 to -0.99	Mild drought
-1.0 to -1.49	Moderate drought
-1.5 to -1.99	Severe drought
-2 and less	Extreme drought

Note 1 (SPI According to):

Desert Action, IES(Institute for Environment and Sustainability) and JRC (European Commission)

SPI-1 to SPI-3 are indicators for immediate impacts such as reduced soil moisture, snowpack, and flow in smaller creeks

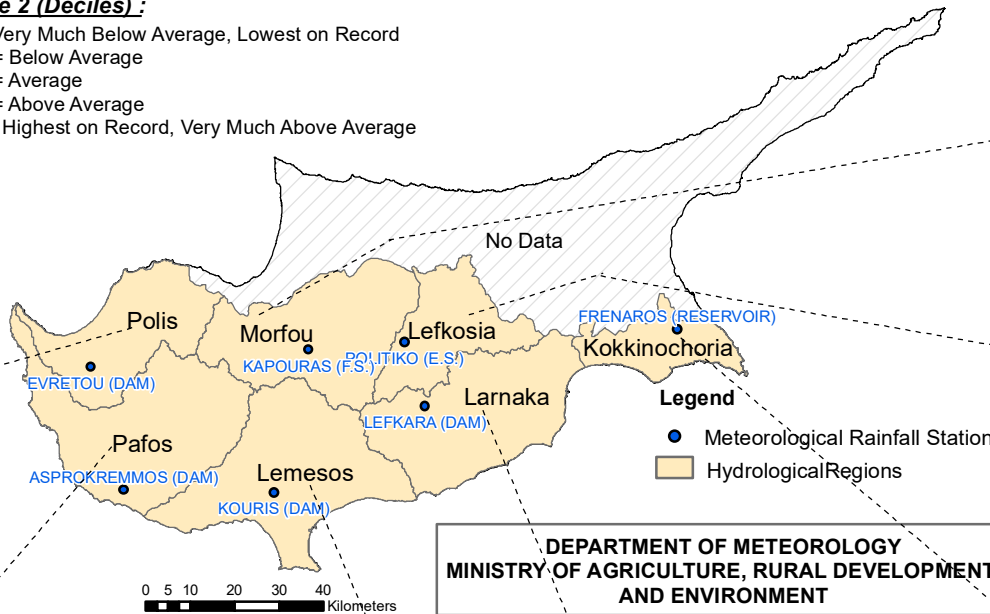
SPI-3 to SPI-12 are indicators for reduced stream flow and reservoir storage

SPI-12 to SPI-48 are indicators for reduced reservoir and groundwater recharge

Hydrological Region	PRECIPITATION (mm)								DRY SPELLS	STANDARDIZED PRECIPITATION INDEX (SPI-n)										
	Monthly Area Aver. Precip.				Cumul. Area Aver. Precip.					Dry Spells Periods for selected Meteorological Rainfall Stations (Dry days: <=2.0 mm)	SPI-1	SPI-3	SPI-6	SPI-9	SPI-12	SPI-24	SPI-36	SPI-48	SPI-60	
	Actual Precip. (mm)	Normal 1970-2010 (mm)	% of Normal	Deciles	Actual Cumul. Precip. (mm)	Normal Cumul. 1970-2010 (mm)	% of Normal	Deciles												
1-Pafos	54.2	62.6	86%	5	713.3	492.5	145%	10	094-Asprokremmos	11, 3, 11, 2	0.02	0.89	1.38	1.39	1.42	2.52	2.12	1.77	0.97	
2-Polis	47.0	64.5	73%	4	645.0	474.7	136%	9	063-Evretou	11, 17	-0.15	0.62	1.21	1.22	1.17	2.11	1.62	1.44	0.81	
3-Morfou	80.7	52.5	154%	9	539.9	366.3	147%	10	370-Kapoura	10, 2, 1, 11	0.94	1.15	1.46	1.52	1.53	2.96	2.32	1.94	1.26	
6-Lefkosia	60.5	39.6	153%	9	383.2	288.7	133%	9	565-Politiko(Tamasos)	11, 3, 1, 11	0.91	0.80	1.00	1.06	1.05	2.48	1.71	1.32	0.56	
7-Kokkinochoria	38.8	31.5	123%	7	440.0	294.3	150%	9	845-Frenaros	11, 2, 11, 2	0.59	0.93	1.42	1.41	1.48	2.04	1.47	0.90	0.03	
8-Larnaka	59.0	45.1	131%	8	510.9	351.1	146%	9	592-Lefkara	11, 2, 14	0.65	0.70	1.30	1.36	1.41	2.45	1.95	1.45	0.81	
9-Lemesos	72.0	55.4	130%	8	717.4	452.5	159%	10	313-Kouris	5, 5, 2, 13	0.63	1.13	1.68	1.74	1.86	3.00	2.59	2.45	1.71	
CYPRUS	60.9	52.3	116%	7	588.6	402.7	146%	10				0.48	0.95	1.45	1.50	1.54	2.72	2.20	1.89	1.11

Note 2 (Deciles):

- 1 = Very Much Below Average, Lowest on Record
- 2-3 = Below Average
- 4-7 = Average
- 8-9 = Above Average
- 10 = Highest on Record, Very Much Above Average



DEPARTMENT OF METEOROLOGY
MINISTRY OF AGRICULTURE, RURAL DEVELOPMENT
AND ENVIRONMENT

