

AREA AVERAGE PRECIPITATION (mm) AND STANDARDIZED PRECIPITATION INDEX (SPI) PER HYDROLOGICAL REGION

MONTH: MARCH 2019

SPI VALUES (According to WMO-No.1090)	
2.0 +	extremely wet
1.5 to 1.99	very wet
1.0 to 1.49	moderately wet
-0.99 to 0.99	near normal
-1.0 to -1.49	moderately dry
-1.5 to -1.99	severely dry
-2 and less	extremely dry

SPI VALUES (According to Karavokyris & Partners)	
0 to -0.99	Mild drought
-1.0 to -1.49	Moderate drought
-1.5 to -1.99	Severe drought
-2 and less	Extreme drought

Hydrological Region	PRECIPITATION (mm)								DRY SPELLS	STANDARDIZED PRECIPITATION INDEX (SPI-n)									
	Monthly Area Aver. Precip.				Cumul. Area Aver. Precip.					Dry Spells Periods for selected Meteorological Rainfall Stations (Dry days: <=2.0 mm)	SPI-1	SPI-3	SPI-6	SPI-9	SPI-12	SPI-24	SPI-36	SPI-48	SPI-60
	Actual Precip. (mm)	Normal 1970-2010 (mm)	% of Normal	Deciles	Actual Cumul. Precip. (mm)	Normal 1970-2010 (mm)	% of Normal	Deciles											
1-Pafos	107.6	62.6	172%	9	885.1	492.5	180%	10	094-Asprokremmos	1, 10, 1, 12	1.07	2.05	2.34	2.30	2.40	1.68	1.25	0.32	0.83
2-Polis	93.8	64.5	145%	8	761.1	474.7	160%	10	063-Evretou	1, 8, 11, 1	0.82	1.71	1.95	1.95	2.06	1.22	1.00	0.30	0.74
3-Morfou	70.9	52.5	135%	9	660.1	366.3	180%	10	370-Kapoura	1, 10, 11	0.74	1.99	2.33	2.34	2.74	1.71	1.16	0.38	1.05
6-Lefkosia	70.4	39.6	178%	9	528.4	288.7	183%	10	565-Politikos	closed	1.15	2.04	2.12	2.15	2.38	1.33	0.83	-0.01	0.82
7-Kokkinochoria	43.2	31.5	137%	8	474.1	294.3	161%	9	845-Frenaros	2, 11, 13, 2	0.74	1.86	1.73	1.68	1.57	0.74	0.11	-0.85	-0.59
8-Larnaka	79.2	45.1	176%	9	635.6	351.1	181%	10	592-Lefkara	2, 10, 8, 3, 1	1.07	2.03	2.13	2.11	2.21	1.36	0.76	0.01	0.74
9-Lemesos	95.5	55.4	172%	9	830.9	452.5	184%	10	313-Kouris	1, 10, 12, 2	1.09	2.06	2.35	2.31	2.52	1.77	1.55	0.58	1.27
CYPRUS	85.2	52.3	163%	9	713.9	402.7	177%	10			1.03	2.11	2.31	2.30	2.47	1.58	1.16	0.24	0.92

Note 1 (SPI According to):

Desert Action, IES(Institute for Environment and Sustainability) and JRC (European Commission)

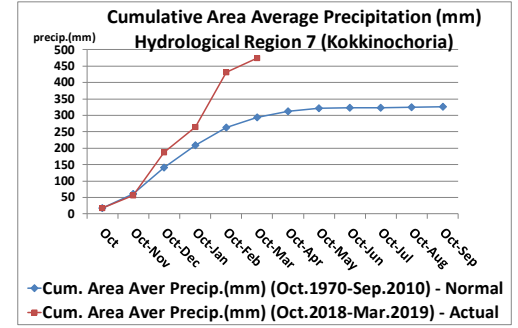
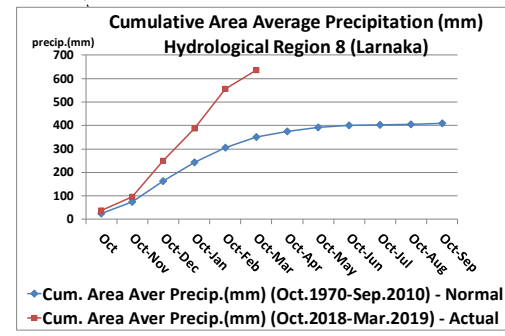
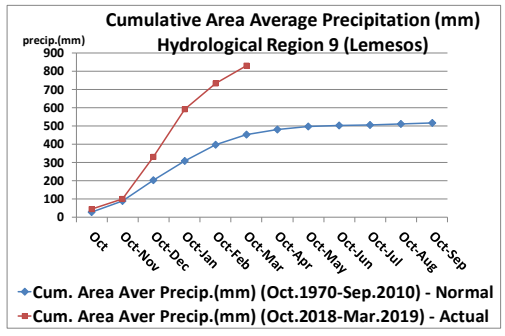
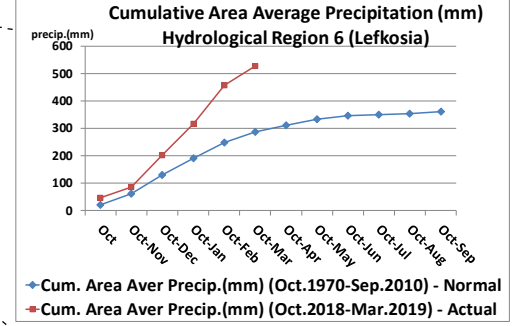
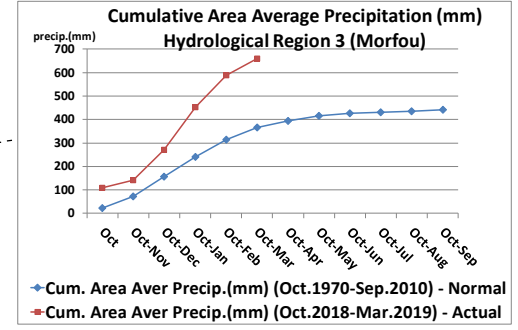
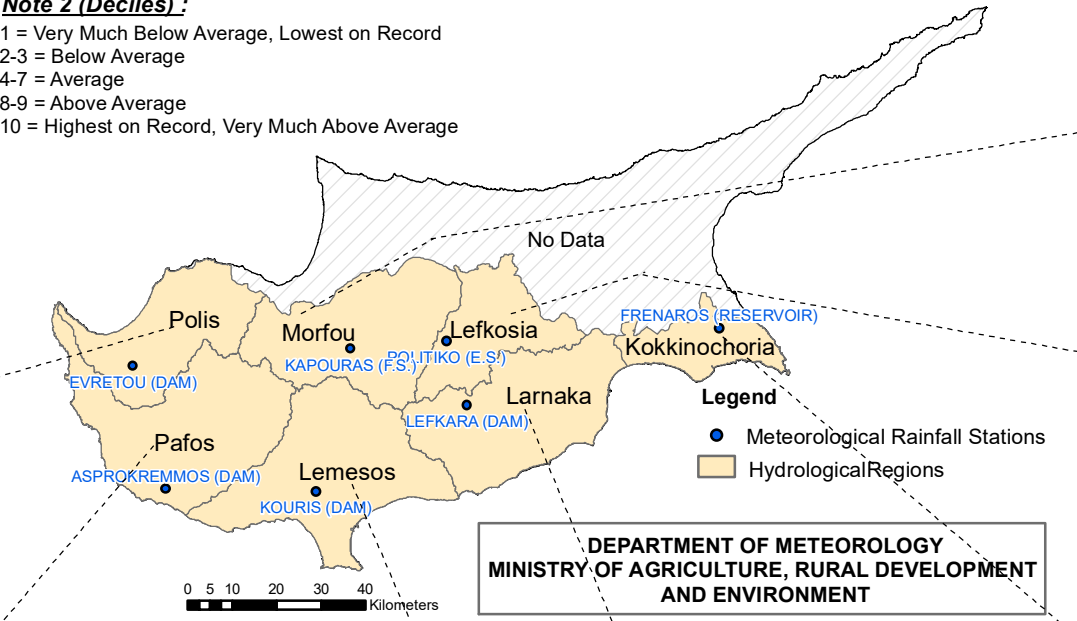
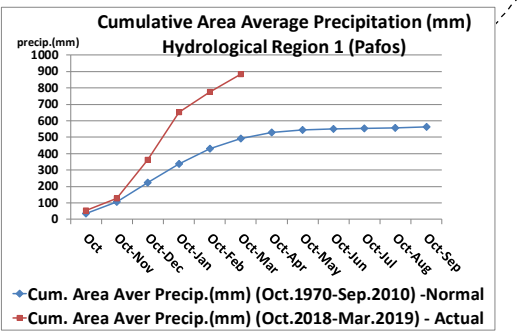
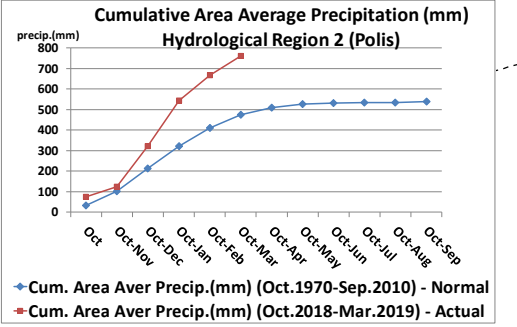
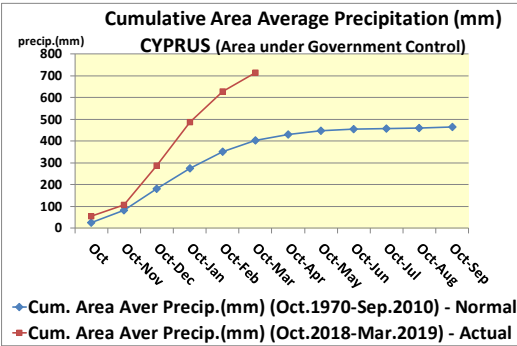
SPI-1 to SPI-3 are indicators for immediate impacts such as reduced soil moisture, snowpack, and flow in smaller creeks

SPI-3 to SPI-12 are indicators for reduced stream flow and reservoir storage

SPI-12 to SPI-48 are indicators for reduced reservoir and groundwater recharge

Note 2 (Deciles):

- 1 = Very Much Below Average, Lowest on Record
- 2-3 = Below Average
- 4-7 = Average
- 8-9 = Above Average
- 10 = Highest on Record, Very Much Above Average



DEPARTMENT OF METEOROLOGY
MINISTRY OF AGRICULTURE, RURAL DEVELOPMENT
AND ENVIRONMENT