

AREA AVERAGE PRECIPITATION (mm) AND STANDARDIZED PRECIPITATION INDEX (SPI) PER HYDROLOGICAL REGION

MONTH: JANUARY 2019

SPI VALUES (According to WMO-No.1090)	
2.0 +	extremely wet
1.5 to 1.99	very wet
1.0 to 1.49	moderately wet
-0.99 to 0.99	near normal
-1.0 to -1.49	moderately dry
-1.5 to -1.99	severely dry
-2 and less	extremely dry

SPI VALUES (According to Karavokyris & Partners)	
0 to -0.99	Mild drought
-1.0 to -1.49	Moderate drought
-1.5 to -1.99	Severe drought
-2 and less	Extreme drought

Hydrological Region	PRECIPITATION (mm)								DRY SPELLS Dry Spells Periods for selected Meteorological Rainfall Stations (Dry days: <=2.0 mm)	STANDARDIZED PRECIPITATION INDEX (SPI-n)									
	Monthly Area Aver. Precip.				Cumul. Area Aver. Precip.					SPI-1	SPI-3	SPI-6	SPI-9	SPI-12	SPI-24	SPI-36	SPI-48	SPI-60	
	Actual Precip. (mm)	Normal 1970-2010 (mm)	% of Normal	Deciles	Actual Cumul. Precip. (mm)	Normal 1970-2010 (mm)	% of Normal	Deciles											
1-Pafos	289.5	115.6	250%	9	651.1	338.3	192%	10	094-Asprokremmos	4, 7, 5	1.89	2.04	2.19	2.39	1.76	1.05	0.78	0.27	0.42
2-Polis	223.6	109.8	204%	9	545.2	322.1	169%	10	063-Evretou	4, 7, 1, 2	1.55	1.54	1.84	2.05	1.30	0.64	0.53	0.32	0.27
3-Morfou	181.0	83.5	217%	9	452.6	240.4	188%	10	370-Kapoura	4, 5, 7, 1	1.63	1.35	2.08	2.58	1.84	0.84	0.38	0.15	0.26
6-Lefkosia	115.3	62.1	186%	9	318.1	192.2	165%	9	565-Politiko(Tamasos)	1, 4, 5, 7, 1	1.24	1.22	1.49	1.82	1.04	0.19	-0.22	-0.56	-0.08
7-Kokkinochoria	78.0	68.3	114%	7	264.8	209.6	126%	9	845-Frenaros	1, 5, 15	0.40	0.75	0.71	0.62	-0.05	-0.57	-1.11	-1.69	-1.51
8-Larnaka	137.0	78.5	175%	9	386.8	241.8	160%	9	592-Lefkara	1, 6, 2, 2, 1, 2, 3	1.10	1.27	1.40	1.59	0.87	0.22	-0.35	-0.59	-0.18
9-Lemesos	259.9	106.9	243%	9	592.9	310.3	191%	10	313-Kouris	5, 2, 4, 5	1.74	1.88	2.03	2.30	1.65	1.00	0.91	0.31	0.52
CYPRUS	200.0	92.9	215%	9	487.4	274.3	178%	10			1.62	1.67	1.91	2.19	1.46	0.69	0.38	-0.06	0.17

Note 1 (SPI According to):

Desert Action, IES(Institute for Environment and Sustainability) and JRC (European Commission)

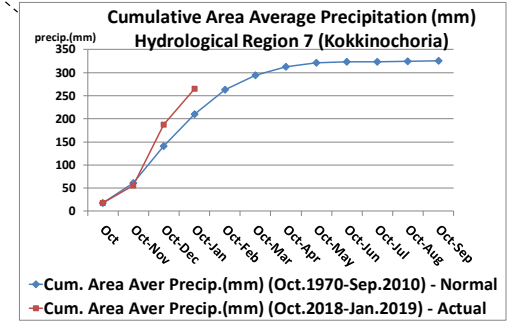
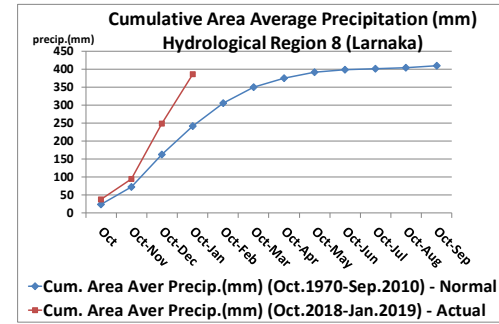
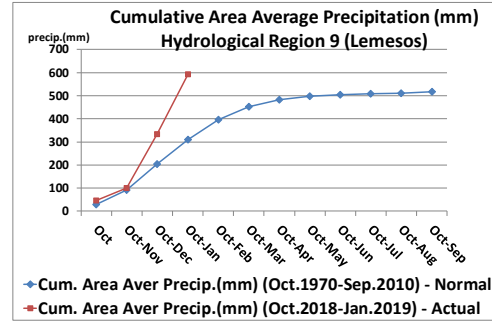
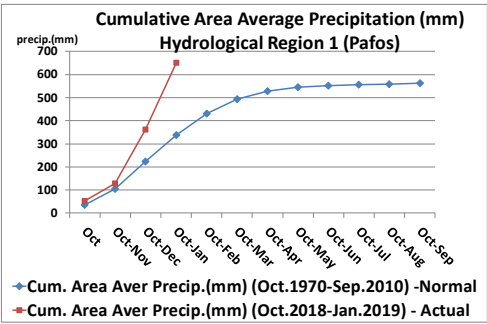
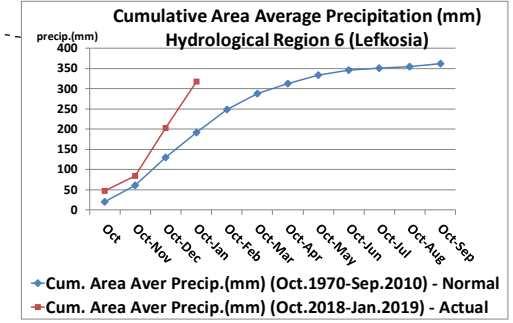
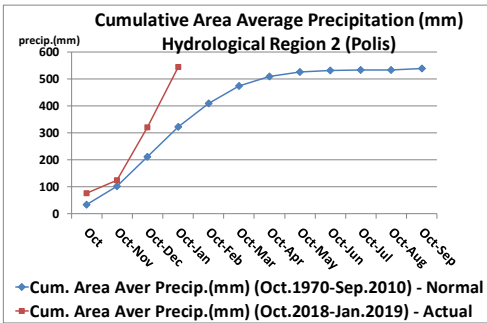
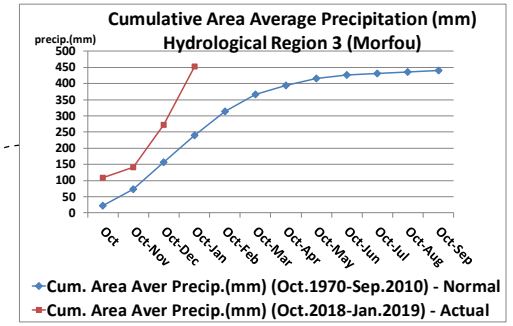
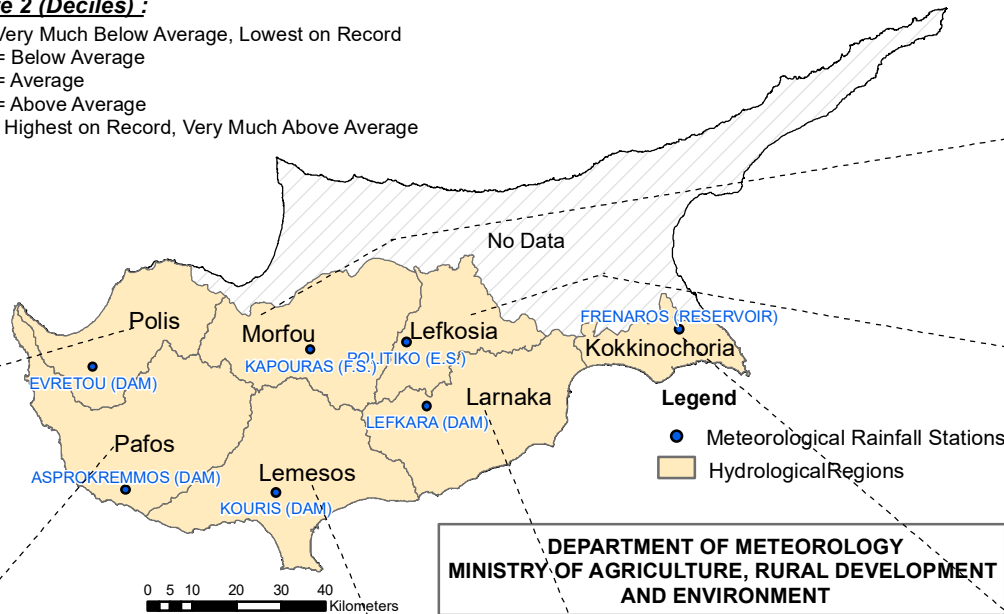
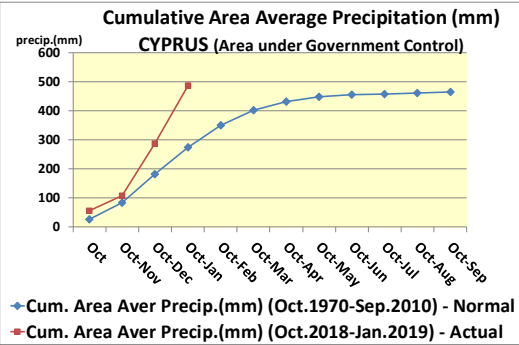
SPI-1 to SPI-3 are indicators for immediate impacts such as reduced soil moisture, snowpack, and flow in smaller creeks

SPI-3 to SPI-12 are indicators for reduced stream flow and reservoir storage

SPI-12 to SPI-48 are indicators for reduced reservoir and groundwater recharge

Note 2 (Deciles):

- 1 = Very Much Below Average, Lowest on Record
- 2-3 = Below Average
- 4-7 = Average
- 8-9 = Above Average
- 10 = Highest on Record, Very Much Above Average



DEPARTMENT OF METEOROLOGY
MINISTRY OF AGRICULTURE, RURAL DEVELOPMENT
AND ENVIRONMENT