

AREA AVERAGE PRECIPITATION (mm) AND STANDARDIZED PRECIPITATION INDEX (SPI) PER HYDROLOGICAL REGION

MONTH: APRIL 2019

SPI VALUES (According to WMO-No.1090)	
2.0 +	extremely wet
1.5 to 1.99	very wet
1.0 to 1.49	moderately wet
-0.99 to 0.99	near normal
-1.0 to -1.49	moderately dry
-1.5 to -1.99	severely dry
-2 and less	extremely dry

SPI VALUES (According to Karavokyris & Partners)	
0 to -0.99	Mild drought
-1.0 to -1.49	Moderate drought
-1.5 to -1.99	Severe drought
-2 and less	Extreme drought

Hydrological Region	PRECIPITATION (mm)								DRY SPELLS Dry Spells Periods for selected Meteorological Rainfall Stations (Dry days: <=2.0 mm)	STANDARDIZED PRECIPITATION INDEX (SPI-n)									
	Monthly Area Aver. Precip.				Cumul. Area Aver. Precip.					SPI-1	SPI-3	SPI-6	SPI-9	SPI-12	SPI-24	SPI-36	SPI-48	SPI-60	
	Actual Precip. (mm)	Normal 1970-2010 (mm)	% of Normal	Deciles	Actual Cumul. Precip. (mm)	Normal Cumul. 1970-2010 (mm)	% of Normal	Deciles											
1-Pafos	40.0	36.0	111%	7	925.1	528.5	175%	10	094-Asprokremmos	1, 5, 4, 14	0.44	1.17	2.21	2.33	2.49	1.75	1.33	0.42	0.97
2-Polis	31.1	35.4	88%	6	792.2	510.1	155%	10	063-Evretou	2, 6, 5, 3, 10	0.13	0.93	1.65	1.92	2.09	1.32	1.09	0.34	0.85
3-Morfou	41.5	28.2	147%	9	701.6	394.5	178%	10	370-Kapoura	1, 13, 10	0.77	1.52	1.86	2.44	2.86	1.79	1.31	0.52	1.17
6-Lefkosia	37.5	23.7	158%	9	565.9	312.4	181%	10	565-Politikos	closed	0.85	1.97	2.05	2.24	2.51	1.36	0.95	0.13	0.90
7-Kokkinochoria	11.2	18.3	61%	3	485.3	312.6	155%	9	845-Frenaros	18, 11	-0.23	2.05	1.70	1.68	1.67	0.75	0.13	-0.81	-0.55
8-Larnaka	40.5	24.5	165%	9	676.1	375.6	180%	10	592-Lefkara	1, 11, 10	1.03	2.21	2.13	2.24	2.38	1.42	0.90	0.17	0.88
9-Lemesos	43.0	29.8	144%	8	873.9	482.3	181%	10	313-Kouris	1, 5, 20	0.78	1.57	2.29	2.43	2.65	1.84	1.62	0.72	1.43
CYPRUS	37.0	28.6	129%	8	750.9	431.4	174%	10			0.65	1.70	2.17	2.37	2.60	1.65	1.27	0.36	1.07

Note 1 (SPI According to):

Desert Action, IES(Institute for Environment and Sustainability) and JRC (European Commission)

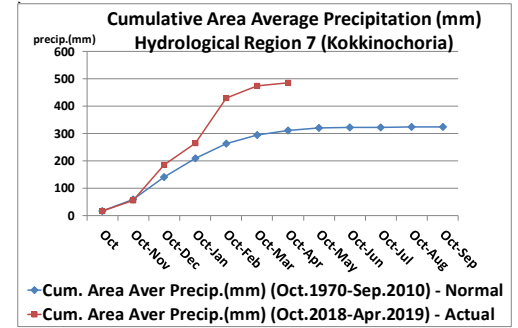
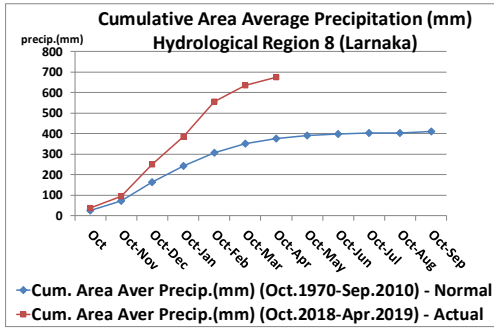
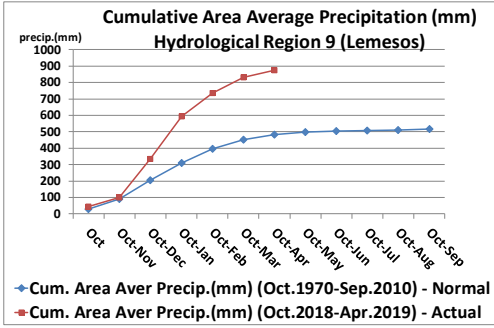
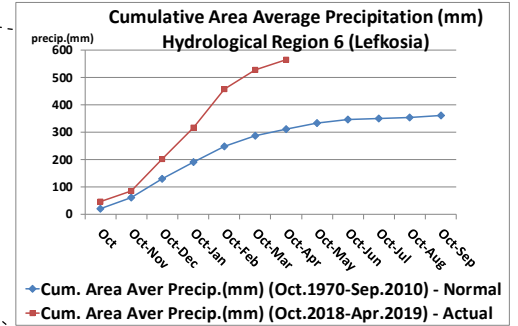
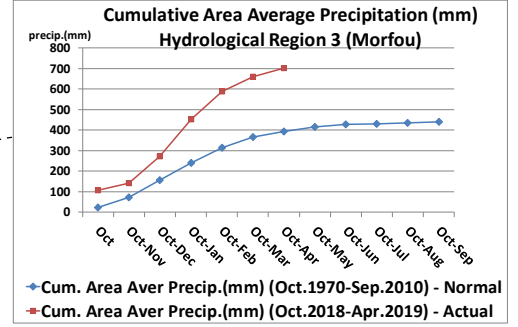
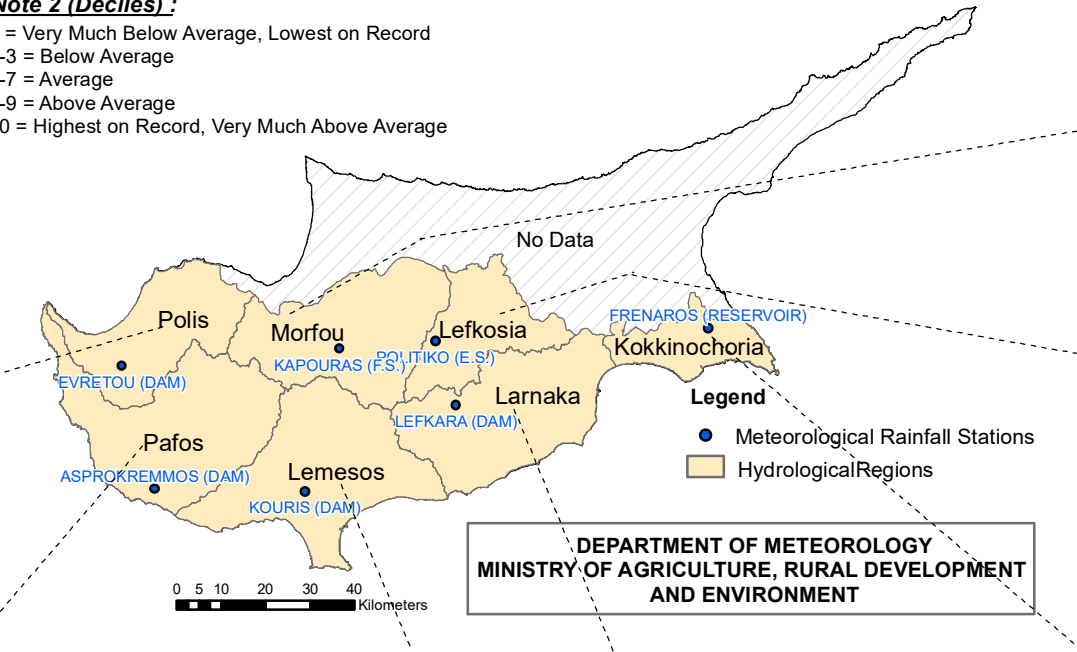
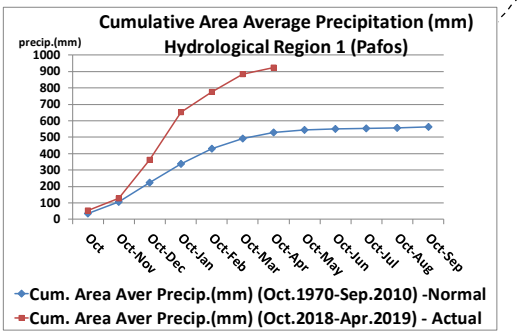
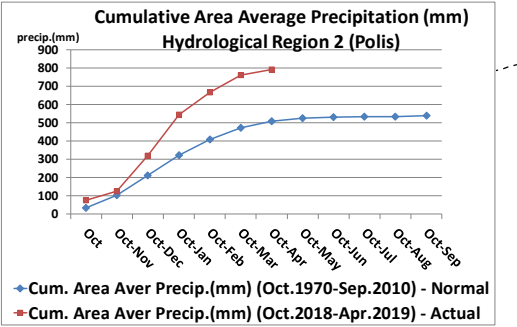
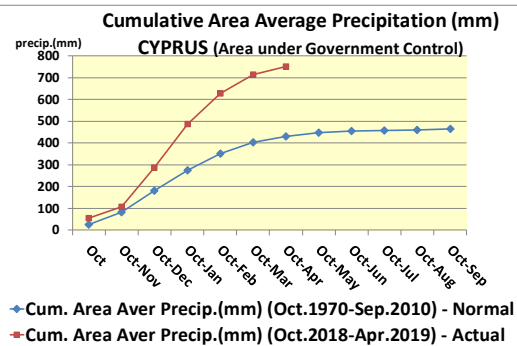
SPI-1 to SPI-3 are indicators for immediate impacts such as reduced soil moisture, snowpack, and flow in smaller creeks

SPI-3 to SPI-12 are indicators for reduced stream flow and reservoir storage

SPI-12 to SPI-48 are indicators for reduced reservoir and groundwater recharge

Note 2 (Deciles):

- 1 = Very Much Below Average, Lowest on Record
- 2-3 = Below Average
- 4-7 = Average
- 8-9 = Above Average
- 10 = Highest on Record, Very Much Above Average



DEPARTMENT OF METEOROLOGY
MINISTRY OF AGRICULTURE, RURAL DEVELOPMENT
AND ENVIRONMENT