

# AREA AVERAGE PRECIPITATION (mm) AND STANDARDIZED PRECIPITATION INDEX (SPI) PER HYDROLOGICAL REGION

MONTH: OCTOBER 2018

SPI VALUES ( According to WMO-No.1090)	
2.0 +	extremely wet
1.5 to 1.99	very wet
1.0 to 1.49	moderately wet
-0.99 to 0.99	near normal
-1.0 to -1.49	moderately dry
-1.5 to -1.99	severely dry
-2 and less	extremely dry

SPI VALUES ( According to Karavokyris & Partners)	
0 to -0.99	Mild drought
-1.0 to -1.49	Moderate drought
-1.5 to -1.99	Severe drought
-2 and less	Extreme drought

**Note 1 (SPI According to):**

Desert Action, IES(Institute for Environment and Sustainability) and JRC (European Commission)

SPI-1 to SPI-3 are indicators for immediate impacts such as reduced soil moisture, snowpack, and flow in smaller creeks

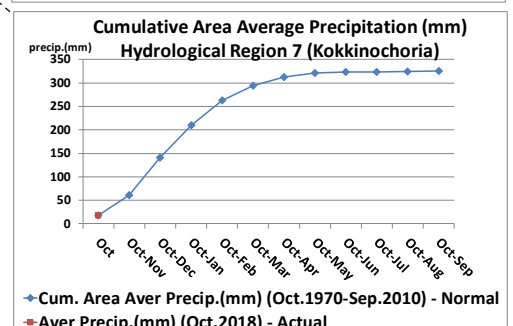
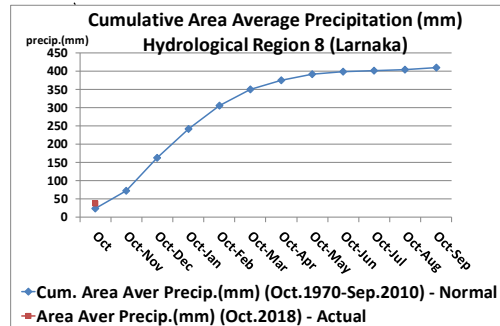
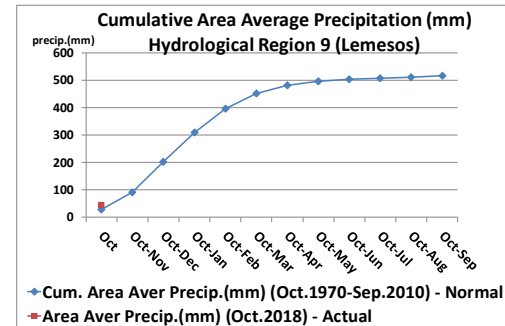
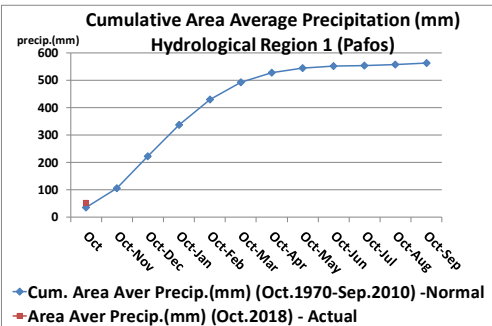
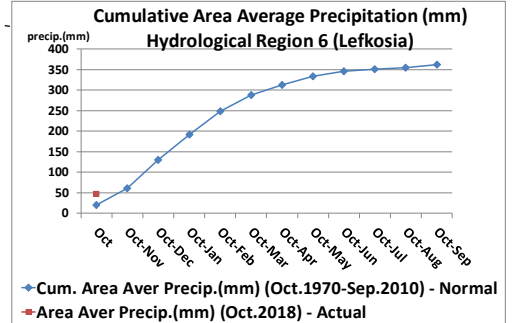
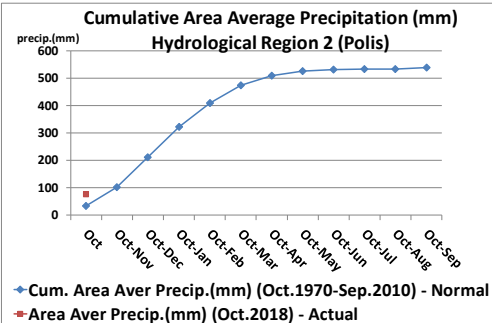
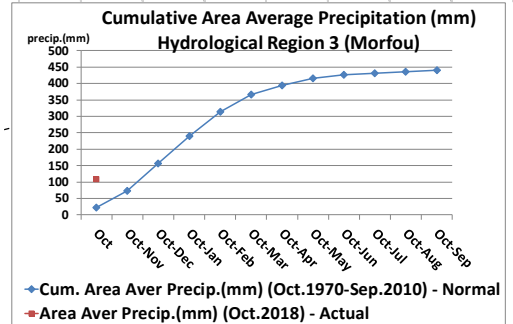
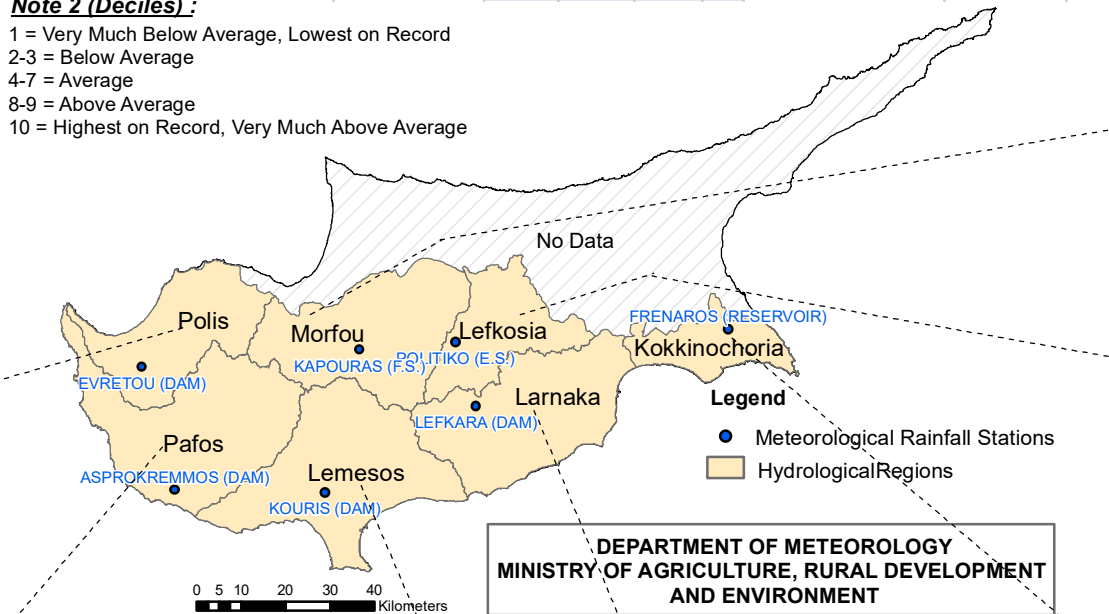
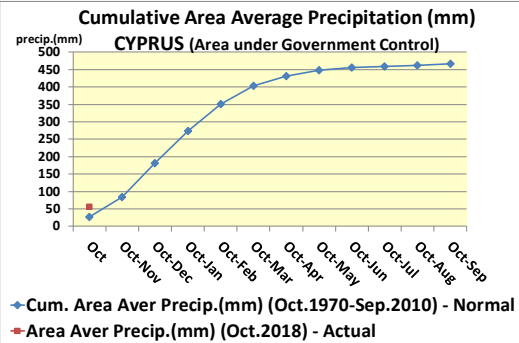
SPI-3 to SPI-12 are indicators for reduced stream flow and reservoir storage

SPI-12 to SPI-48 are indicators for reduced reservoir and groundwater recharge

Hydrological Region	PRECIPITATION (mm)				DRY SPELLS	STANDARDIZED PRECIPITATION INDEX (SPI-n)									
	Monthly Area Aver. Precip.					Dry Spells Periods for selected Meteorological Rainfall Stations (Dry days: <=2.0 mm)	SPI-1	SPI-3	SPI-6	SPI-9	SPI-12	SPI-24	SPI-36	SPI-48	SPI-60
	Actual Precip. (mm)	Normal 1970-2010 (mm)	% of Normal	Deciles											
1-Pafos	52.1	34.9	149%	8	094-Asprokremmos	10, 8, 3, 6	0.75	0.79	1.41	0.13	0.16	-0.12	-1.06	-0.59	-1.14
2-Polis	75.8	33.9	223%	9	063-Evretou	7, 2, 8, 3, 6	1.36	1.35	1.82	0.29	0.22	0.19	-0.79	-0.22	-0.99
3-Morfou	108.3	22.4	483%	10	370-Kapoura	7, 1, 6, 2, 6	2.31	2.37	2.86	1.55	0.92	0.24	-0.92	-0.41	-0.86
6-Lefkosia	47.1	20.6	229%	9	565-Politiko(Tamasos)	7, 11, 3, 6	1.22	1.28	1.78	0.28	-0.03	-0.48	-1.48	-0.87	-1.15
7-Kokkinochoria	17.7	17.4	102%	7	845-Frenaros	20, 2, 7	0.27	0.15	-0.19	-1.72	-0.95	-1.27	-2.17	-1.95	-2.50
8-Larnaka	38.2	24.4	156%	9	592-Lefkara	8, 10, 2, 6	0.79	0.90	1.37	-0.39	-0.18	-0.67	-1.64	-0.77	-1.53
9-Lemesos	45.6	27.9	163%	9	313-Kouris	19, 3, 6	0.89	0.83	1.57	0.00	-0.03	-0.08	-1.10	-0.51	-1.45
<b>CYPRUS</b>	<b>55.9</b>	<b>26.8</b>	<b>209%</b>	<b>9</b>			<b>1.24</b>	<b>1.29</b>	<b>1.93</b>	<b>0.21</b>	<b>0.07</b>	<b>-0.23</b>	<b>-1.32</b>	<b>-0.69</b>	<b>-1.43</b>

**Note 2 (Deciles):**

- 1 = Very Much Below Average, Lowest on Record
- 2-3 = Below Average
- 4-7 = Average
- 8-9 = Above Average
- 10 = Highest on Record, Very Much Above Average



DEPARTMENT OF METEOROLOGY  
MINISTRY OF AGRICULTURE, RURAL DEVELOPMENT  
AND ENVIRONMENT