

# AREA AVERAGE PRECIPITATION (mm) AND STANDARDIZED PRECIPITATION INDEX (SPI) PER HYDROLOGICAL REGION

MONTH: AUGUST 2018

SPI VALUES ( According to WMO-No.1090)	
2.0 +	extremely wet
1.5 to 1.99	very wet
1.0 to 1.49	moderately wet
-0.99 to 0.99	near normal
-1.0 to -1.49	moderately dry
-1.5 to -1.99	severely dry
-2 and less	extremely dry

SPI VALUES ( According to Karavokyris & Partners)	
0 to -0.99	Mild drought
-1.0 to -1.49	Moderate drought
-1.5 to -1.99	Severe drought
-2 and less	Extreme drought

Hydrological Region	PRECIPITATION (mm)								DRY SPELLS	STANDARDIZED PRECIPITATION INDEX (SPI-n)									
	Monthly Area Aver. Precip.				Cumul. Area Aver. Precip.					Dry Spells Periods for selected Meteorological Rainfall Stations (Dry days: <=2.0 mm)	SPI-1	SPI-3	SPI-6	SPI-9	SPI-12	SPI-24	SPI-36	SPI-48	SPI-60
	Actual Precip. (mm)	Normal 1970-2010 (mm)	% of Normal	Deciles	Actual Cumul. Precip. (mm)	Normal Cumul. 1970-2010 (mm)	% of Normal	Deciles											
1-Pafos	0.9	3.0	30%	5	561.1	558.2	101%	5	094-Asprokremmos	31	-0.08	1.85	-0.14	-0.07	0.06	-0.24	-1.19	-0.69	-1.27
2-Polis	0.2	1.5	13%	6	519.2	534.9	97%	5	063-Evretou	31	0.26	0.69	-0.06	-0.13	-0.11	-0.11	-0.96	-0.40	-1.23
3-Morfou	0.9	4.4	21%	5	421.4	435.8	97%	5	370-Kapoura	31	-0.01	0.86	0.81	0.18	-0.04	-0.41	-1.37	-0.78	-1.50
6-Lefkosia	5.6	4.2	133%	8	310.0	355.0	87%	4	565-Politiko(Tamasos)	3, 26	0.68	1.37	0.37	-0.45	-0.34	-0.73	-1.50	-0.79	-1.40
7-Kokkinochoria	0.0	0.3	6%	6	228.2	324.1	70%	2	845-Frenaros	31	*	0.23	-2.32	-1.69	-0.97	-1.16	-2.20	-1.91	-2.62
8-Larnaka	0.8	2.0	42%	6	356.1	404.4	88%	3	592-Lefkara	31	0.19	1.22	-0.64	-0.69	-0.34	-0.78	-1.48	-0.77	-1.68
9-Lemesos	3.0	3.7	82%	7	488.7	511.7	96%	5	313-Kouris	31	0.21	1.56	-0.20	-0.20	-0.13	-0.23	-1.12	-0.58	-1.62
<b>CYPRUS</b>	<b>1.4</b>	<b>2.9</b>	<b>48%</b>	<b>6</b>	<b>439.0</b>	<b>461.4</b>	<b>95%</b>	<b>5</b>			<b>-0.20</b>	<b>1.36</b>	<b>-0.08</b>	<b>-0.33</b>	<b>-0.22</b>	<b>-0.46</b>	<b>-1.42</b>	<b>-0.82</b>	<b>-1.68</b>

**Note 1 (SPI According to):**

Desert Action, IES(Institute for Environment and Sustainability) and JRC (European Commission)

SPI-1 to SPI-3 are indicators for immediate impacts such as reduced soil moisture, snowpack, and flow in smaller creeks

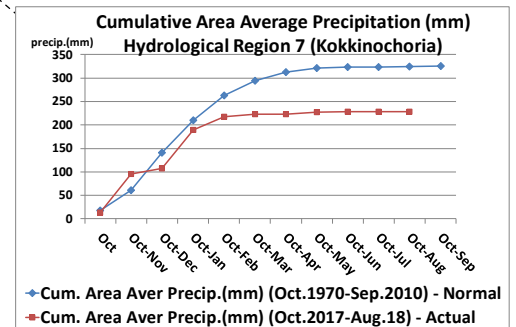
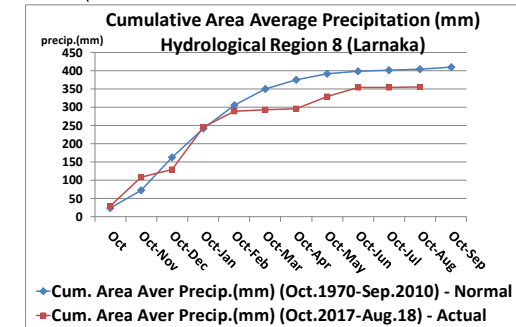
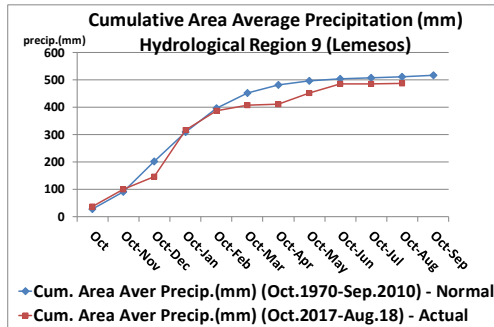
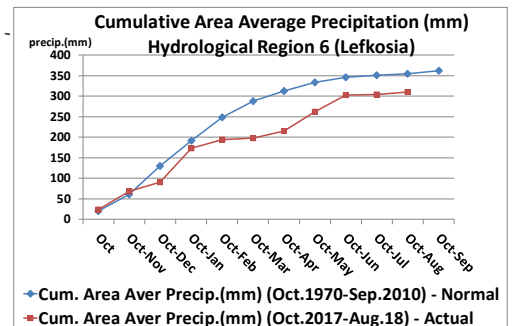
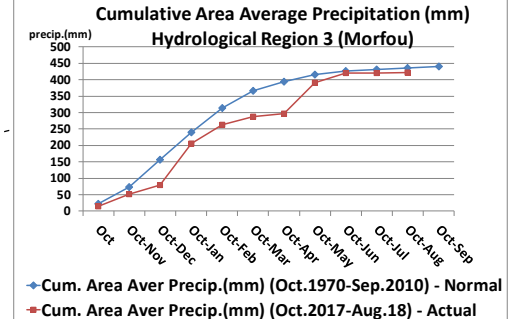
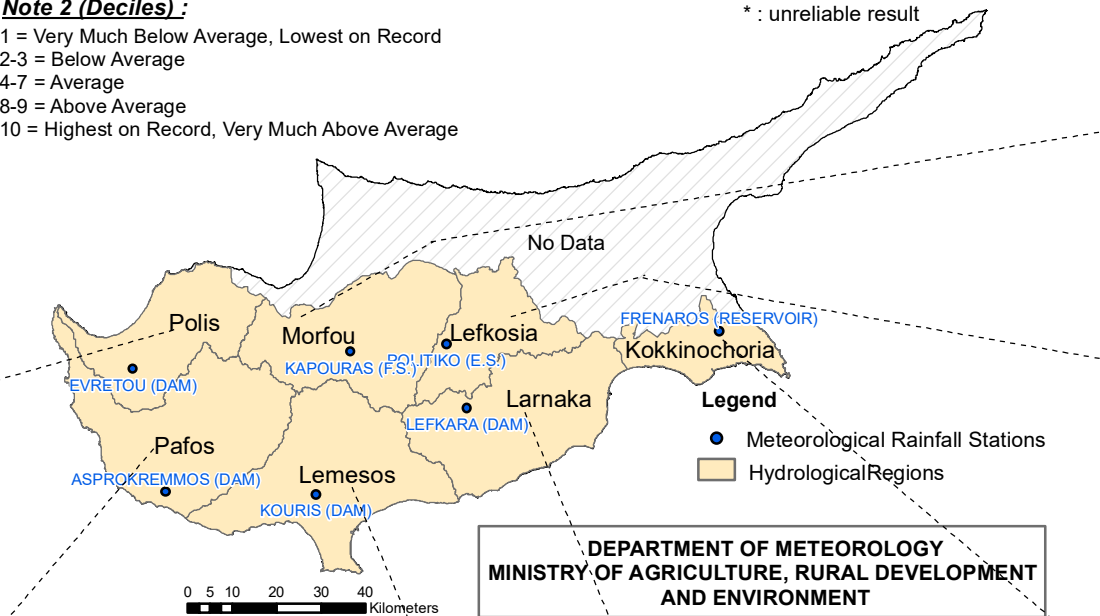
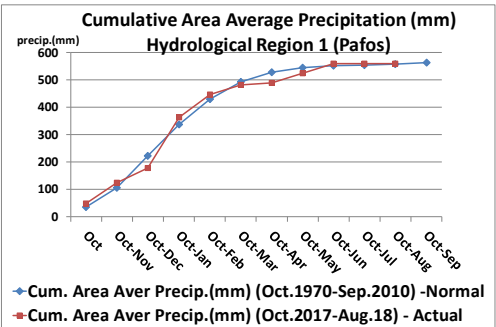
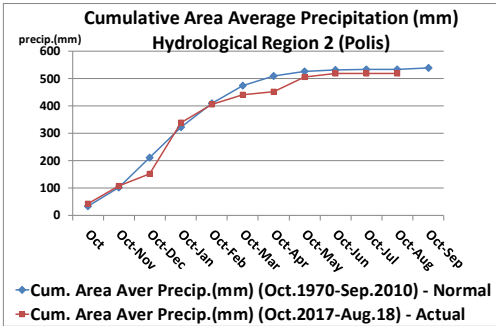
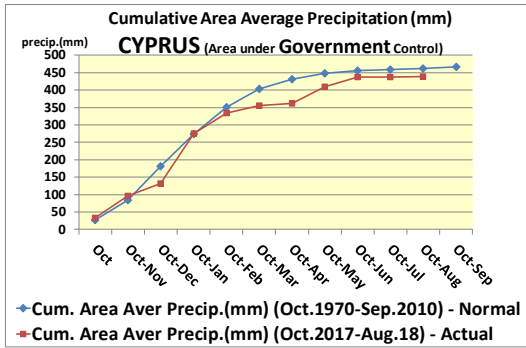
SPI-3 to SPI-12 are indicators for reduced stream flow and reservoir storage

SPI-12 to SPI-48 are indicators for reduced reservoir and groundwater recharge

**Note 2 (Deciles):**

- 1 = Very Much Below Average, Lowest on Record
- 2-3 = Below Average
- 4-7 = Average
- 8-9 = Above Average
- 10 = Highest on Record, Very Much Above Average

\* : unreliable result



DEPARTMENT OF METEOROLOGY  
MINISTRY OF AGRICULTURE, RURAL DEVELOPMENT  
AND ENVIRONMENT