

# AREA AVERAGE PRECIPITATION (mm) AND STANDARDIZED PRECIPITATION INDEX (SPI) PER HYDROLOGICAL REGION

MONTH: SEPTEMBER 2020

SPI VALUES ( According to WMO-No.1090)	
2.0 +	extremely wet
1.5 to 1.99	very wet
1.0 to 1.49	moderately wet
-0.99 to 0.99	near normal
-1.0 to -1.49	moderately dry
-1.5 to -1.99	severely dry
-2 and less	extremely dry

SPI VALUES ( According to Karavokyris & Partners)	
0 to -0.99	Mild drought
-1.0 to -1.49	Moderate drought
-1.5 to -1.99	Severe drought
-2 and less	Extreme drought

Hydrological Region	PRECIPITATION (mm)								DRY SPELLS  Dry Spells Periods for selected Meteorological Rainfall Stations (Dry days: <=2.0 mm)	STANDARDIZED PRECIPITATION INDEX (SPI-n)									
	Monthly Area Aver. Precip.				Cumul. Area Aver. Precip.					SPI-1	SPI-3	SPI-6	SPI-9	SPI-12	SPI-24	SPI-36	SPI-48	SPI-60	
	Actual Precip. (mm)	Normal 1970-2010 (mm)	% of Normal	Deciles	Actual Cumul. Precip. (mm)	Normal Cumul. 1970-2010 (mm)	% of Normal	Deciles											
1-Pafos	0.1	5.5	2%	2	751.7	563.6	133%	9	094-Asprokremmos	30	-0.84	-0.79	-1.05	0.57	1.21	2.37	2.10	1.76	1.03
2-Polis	0.1	4.3	2%	2	702.1	539.2	130%	9	063-Evretou	30	-0.36	-0.91	-0.06	0.48	1.12	2.01	1.70	1.52	0.75
3-Morfou	0.1	5.0	2%	2	581.0	440.8	132%	9	370-Kapoura	30	-0.15	-1.04	-0.82	0.69	1.15	2.44	2.37	2.02	1.28
6-Lefkosia	2.7	6.7	40%	6	420.9	361.7	116%	8	565-Politiko(Tamasos)	24, 5	-0.08	-0.88	-0.95	0.27	0.64	2.00	1.69	1.23	0.50
7-Kokkinochoria	0.0	1.7	0%	1	455.3	325.7	140%	9	845-Frenaros	30	*	*	-0.79	0.70	1.32	2.05	1.36	0.88	-0.01
8-Larnaka	0.9	5.8	16%	4	548.0	410.3	134%	9	592-Lefkara	20, 9	-0.40	-1.09	-0.66	0.42	1.12	2.31	1.96	1.48	0.90
9-Lemesos	0.0	5.7	0%	1	748.9	517.3	145%	10	313-Kouris	30	-0.58	-0.97	-1.13	0.85	1.58	2.84	2.52	2.35	1.80
<b>CYPRUS</b>	<b>0.4</b>	<b>5.0</b>	<b>8%</b>	<b>2</b>	<b>626.7</b>	<b>466.4</b>	<b>134%</b>	<b>9</b>			<b>-0.84</b>	<b>-1.49</b>	<b>-0.86</b>	<b>0.63</b>	<b>1.28</b>	<b>2.52</b>	<b>2.20</b>	<b>1.89</b>	<b>1.16</b>

**Note 1 (SPI According to):**

Desert Action, IES(Institute for Environment and Sustainability) and JRC (European Commission)

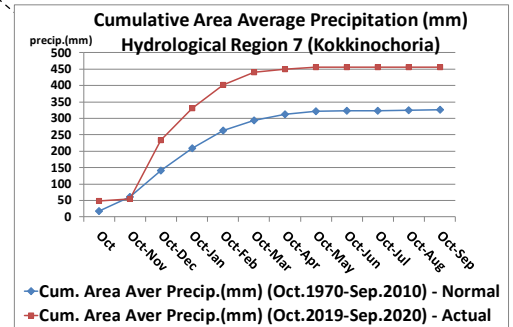
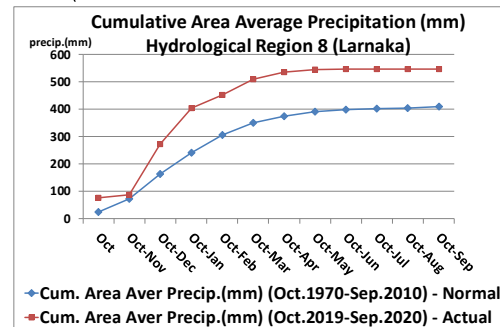
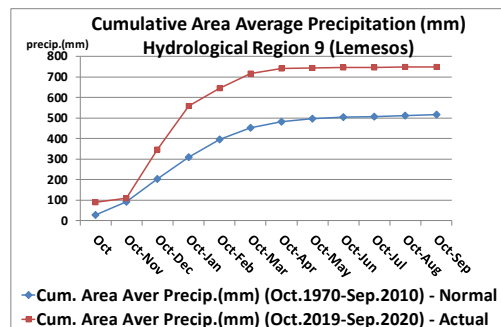
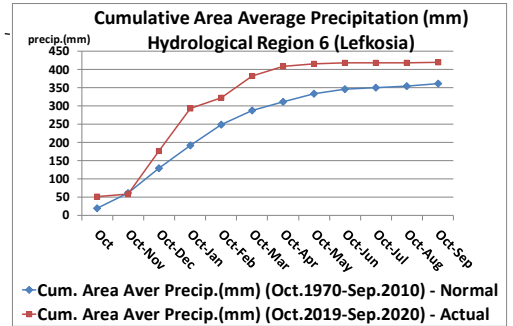
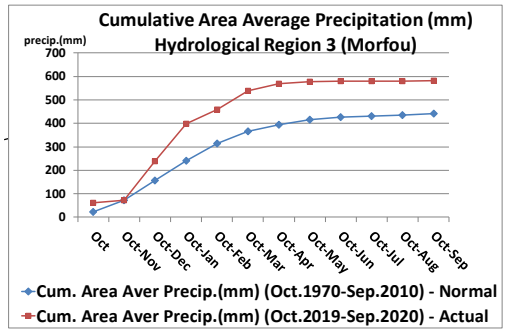
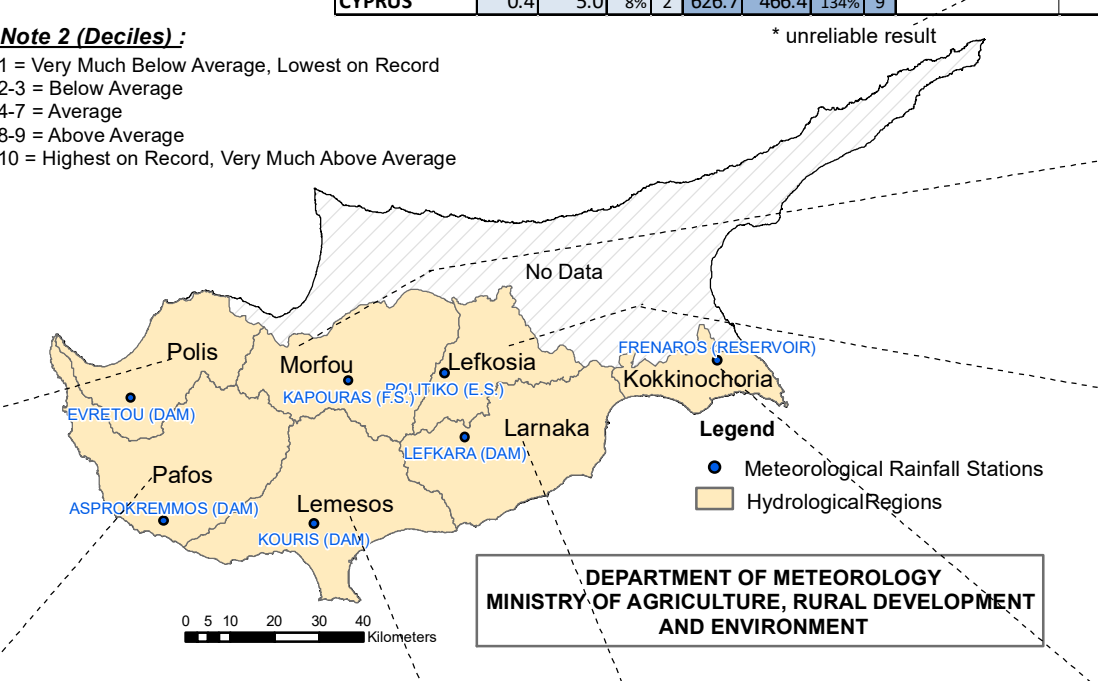
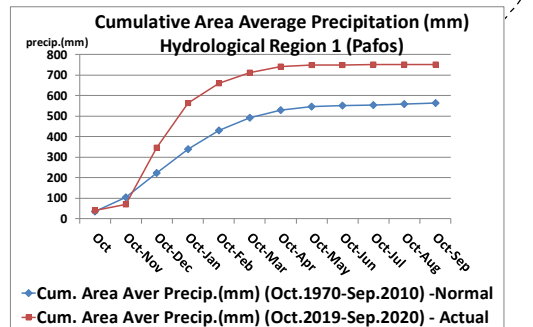
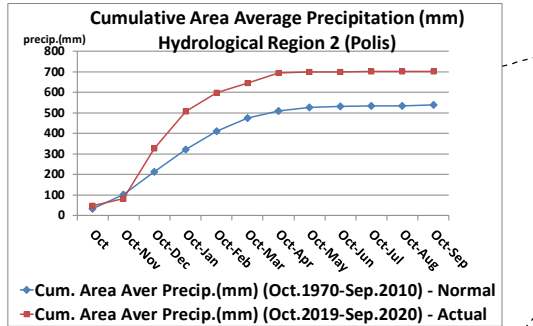
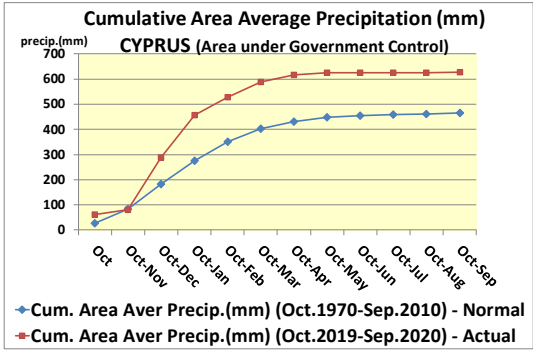
SPI-1 to SPI-3 are indicators for immediate impacts such as reduced soil moisture, snowpack, and flow in smaller creeks

SPI-3 to SPI-12 are indicators for reduced stream flow and reservoir storage

SPI-12 to SPI-48 are indicators for reduced reservoir and groundwater recharge

**Note 2 (Deciles):**

- 1 = Very Much Below Average, Lowest on Record
- 2-3 = Below Average
- 4-7 = Average
- 8-9 = Above Average
- 10 = Highest on Record, Very Much Above Average



DEPARTMENT OF METEOROLOGY  
MINISTRY OF AGRICULTURE, RURAL DEVELOPMENT  
AND ENVIRONMENT