

# AREA AVERAGE PRECIPITATION (mm) AND STANDARDIZED PRECIPITATION INDEX (SPI) PER HYDROLOGICAL REGION

MONTH: MAY 2020

SPI VALUES ( According to WMO-No.1090)	
2.0 +	extremely wet
1.5 to 1.99	very wet
1.0 to 1.49	moderately wet
-0.99 to 0.99	near normal
-1.0 to -1.49	moderately dry
-1.5 to -1.99	severely dry
-2 and less	extremely dry

SPI VALUES ( According to Karavokyris & Partners)	
0 to -0.99	Mild drought
-1.0 to -1.49	Moderate drought
-1.5 to -1.99	Severe drought
-2 and less	Extreme drought

Hydrological Region	PRECIPITATION (mm)								DRY SPELLS	STANDARDIZED PRECIPITATION INDEX (SPI-n)									
	Monthly Area Aver. Precip.				Cumul. Area Aver. Precip.					Dry Spells Periods for selected Meteorological Rainfall Stations (Dry days: <=2.0 mm)	SPI-1	SPI-3	SPI-6	SPI-9	SPI-12	SPI-24	SPI-36	SPI-48	SPI-60
	Actual Precip. (mm)	Normal 1970-2010 (mm)	% of Normal	Deciles	Actual Cumul. Precip. (mm)	Normal Cumul. 1970-2010 (mm)	% of Normal	Deciles											
1-Pafos	7.0	17.5	40%	4	748.5	546.0	137%	9	094-Asprokremmos	27, 3	-0.63	-0.44	1.44	1.24	1.37	2.48	2.11	1.78	1.00
2-Polis	6.3	16.5	39%	4	701.0	526.6	133%	9	063-Evretou	27, 3	-0.69	-0.09	1.33	1.22	1.26	2.07	1.73	1.55	0.82
3-Morfou	9.8	20.7	47%	4	578.2	415.2	139%	10	370-Kapoura	4, 26	-0.41	0.51	1.35	1.41	1.51	2.65	2.34	1.98	1.25
6-Lefkosia	7.9	22.1	36%	3	416.4	334.4	125%	8	565-Politiko(Tamasos)	31	-0.56	0.38	0.94	0.96	1.06	2.29	1.69	1.29	0.56
7-Kokkinochoria	6.0	9.0	67%	7	455.2	321.6	142%	9	845-Frenaros	30	0.06	0.09	1.48	1.37	1.51	2.05	1.37	0.89	0.08
8-Larnaka	9.1	16.4	55%	6	545.6	391.9	139%	9	592-Lefkara	29	-0.24	0.38	1.21	1.31	1.37	2.41	1.93	1.49	0.94
9-Lemesos	4.2	15.0	28%	2	744.9	497.3	150%	10	313-Kouris	31	-1.00	0.10	1.50	1.67	1.82	2.94	2.56	2.42	1.77
<b>CYPRUS</b>	<b>7.4</b>	<b>16.8</b>	<b>44%</b>	<b>3</b>	<b>624.5</b>	<b>448.2</b>	<b>139%</b>	<b>10</b>			<b>-0.62</b>	<b>0.11</b>	<b>1.42</b>	<b>1.41</b>	<b>1.53</b>	<b>2.63</b>	<b>2.21</b>	<b>1.93</b>	<b>1.17</b>

**Note 1 (SPI According to):**

Desert Action, IES(Institute for Environment and Sustainability) and JRC (European Commission)

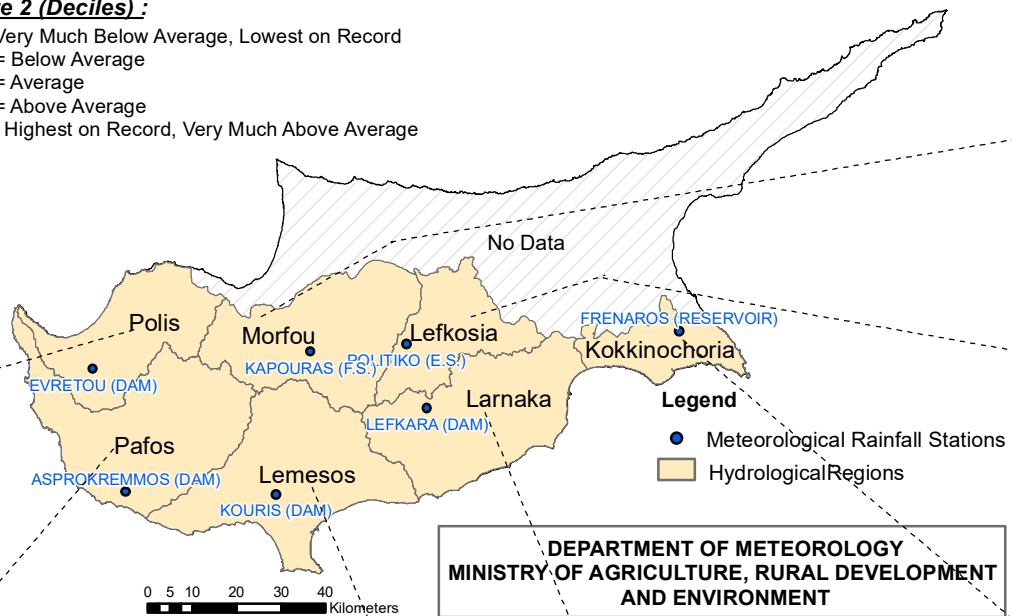
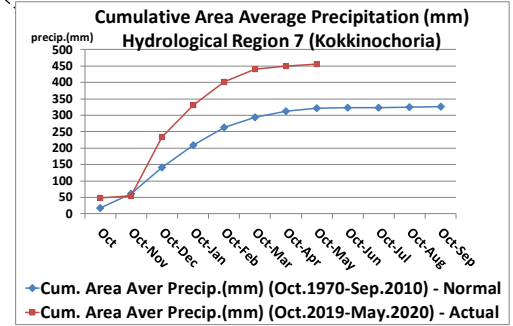
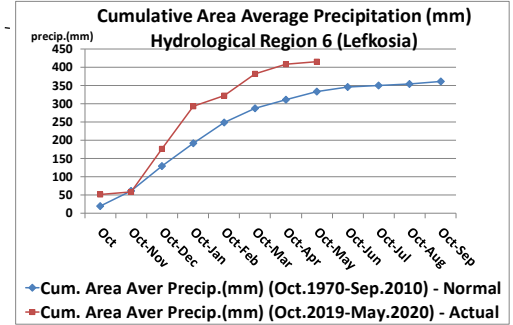
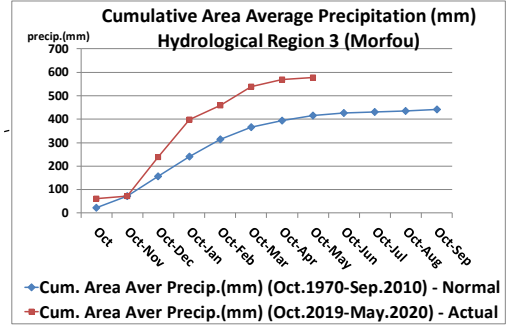
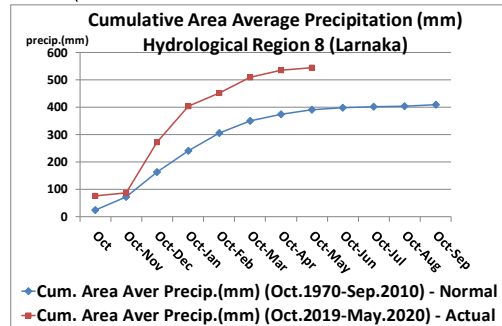
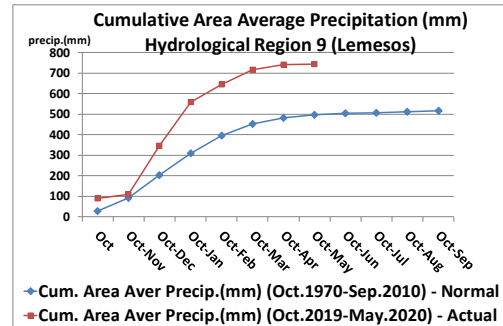
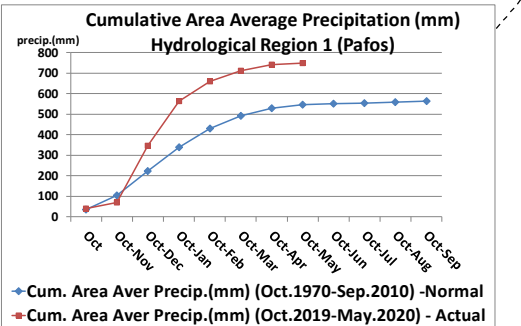
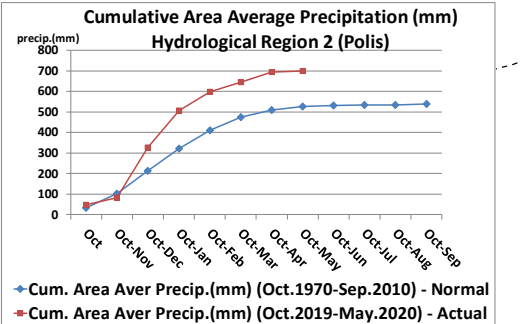
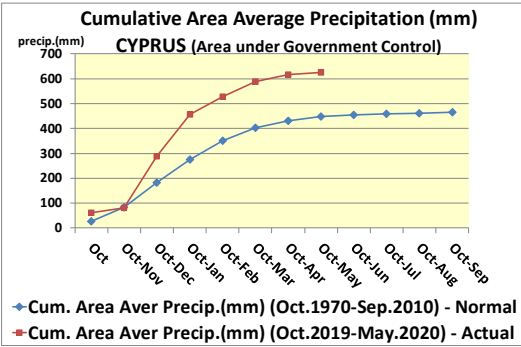
SPI-1 to SPI-3 are indicators for immediate impacts such as reduced soil moisture, snowpack, and flow in smaller creeks

SPI-3 to SPI-12 are indicators for reduced stream flow and reservoir storage

SPI-12 to SPI-48 are indicators for reduced reservoir and groundwater recharge

**Note 2 (Deciles):**

- 1 = Very Much Below Average, Lowest on Record
- 2-3 = Below Average
- 4-7 = Average
- 8-9 = Above Average
- 10 = Highest on Record, Very Much Above Average



DEPARTMENT OF METEOROLOGY  
MINISTRY OF AGRICULTURE, RURAL DEVELOPMENT  
AND ENVIRONMENT