

AREA AVERAGE PRECIPITATION (mm) AND STANDARDIZED PRECIPITATION INDEX (SPI) PER HYDROLOGICAL REGION

MONTH: JULY 2020

SPI VALUES (According to WMO-No.1090)	
2.0 +	extremely wet
1.5 to 1.99	very wet
1.0 to 1.49	moderately wet
-0.99 to 0.99	near normal
-1.0 to -1.49	moderately dry
-1.5 to -1.99	severely dry
-2 and less	extremely dry

SPI VALUES (According to Karavokyris & Partners)	
0 to -0.99	Mild drought
-1.0 to -1.49	Moderate drought
-1.5 to -1.99	Severe drought
-2 and less	Extreme drought

Hydrological Region	PRECIPITATION (mm)								DRY SPELLS Dry Spells Periods for selected Meteorological Rainfall Stations (Dry days: <=2.0 mm)	STANDARDIZED PRECIPITATION INDEX (SPI-n)									
	Monthly Area Aver. Precip.				Cumul. Area Aver. Precip.					SPI-1	SPI-3	SPI-6	SPI-9	SPI-12	SPI-24	SPI-36	SPI-48	SPI-60	
	Actual Precip. (mm)	Normal 1970-2010 (mm)	% of Normal	Deciles	Actual Cumul. Precip. (mm)	Normal Cumul. 1970-2010 (mm)	% of Normal	Deciles											
1-Pafos	2.1	3.0	71%	8	750.7	555.1	135%	9	094-Asprokremmos	30	0.35	-1.15	-0.36	1.20	1.26	2.35	2.09	1.77	0.99
2-Polis	0.7	1.7	44%	6	701.8	533.4	132%	9	063-Evretou	30	0.30	-1.00	-0.09	1.09	1.18	2.01	1.72	1.55	0.82
3-Morfou	1.3	4.5	28%	6	580.2	431.4	134%	9	370-Kapoura	30	0.04	-0.89	0.02	0.96	1.32	2.50	2.30	1.98	1.23
6-Lefkosia	0.0	4.5	1%	1	418.2	350.8	119%	8	565-Politiko(Tamasos)	30	-0.15	-1.03	-0.42	0.47	0.82	2.05	1.65	1.19	0.51
7-Kokkinochoria	0.0	0.2	0%	1	455.3	323.8	141%	9	845-Frenaros	30	*	-0.20	0.41	1.09	1.34	2.02	1.34	0.88	-0.03
8-Larnaka	0.1	2.9	3%	4	547.0	402.5	136%	9	592-Lefkara	30	0.05	-0.82	-0.14	0.83	1.25	2.29	1.93	1.46	0.87
9-Lemesos	1.9	3.6	52%	7	747.5	508.0	147%	9	313-Kouris	30	0.07	-1.32	-0.04	1.25	1.70	2.81	2.52	2.40	1.76
CYPRUS	0.8	3.0	26%	6	625.9	458.5	137%	9			0.07	-1.14	-0.14	1.10	1.39	2.50	2.19	1.91	1.14

Note 1 (SPI According to):

Desert Action, IES(Institute for Environment and Sustainability) and JRC (European Commission)

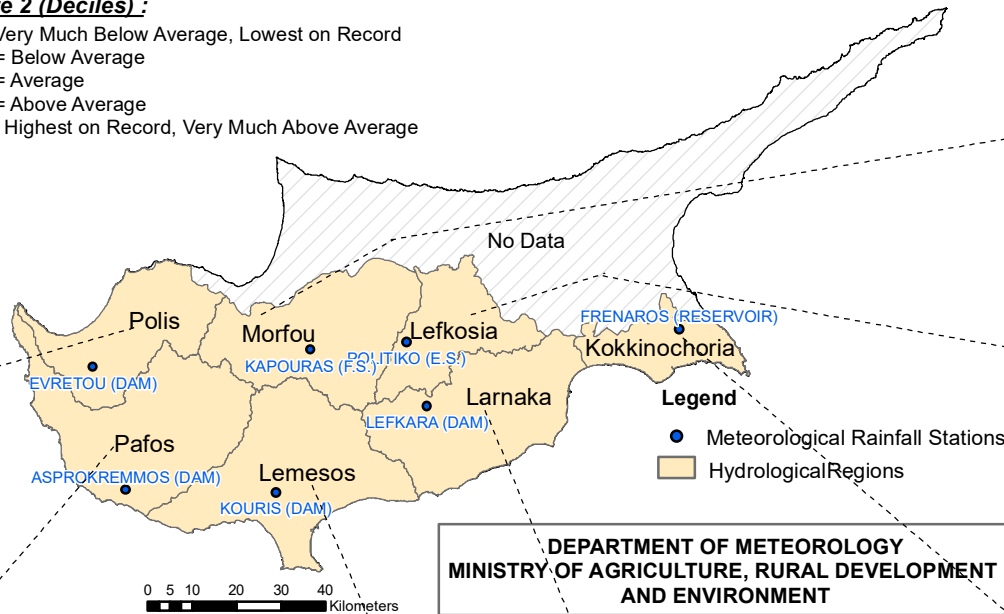
SPI-1 to SPI-3 are indicators for immediate impacts such as reduced soil moisture, snowpack, and flow in smaller creeks

SPI-3 to SPI-12 are indicators for reduced stream flow and reservoir storage

SPI-12 to SPI-48 are indicators for reduced reservoir and groundwater recharge

Note 2 (Deciles):

- 1 = Very Much Below Average, Lowest on Record
- 2-3 = Below Average
- 4-7 = Average
- 8-9 = Above Average
- 10 = Highest on Record, Very Much Above Average



**DEPARTMENT OF METEOROLOGY
MINISTRY OF AGRICULTURE, RURAL DEVELOPMENT
AND ENVIRONMENT**

