

AREA AVERAGE PRECIPITATION (mm) AND STANDARDIZED PRECIPITATION INDEX (SPI) PER HYDROLOGICAL REGION

MONTH: DECEMBER 2020

SPI VALUES (According to WMO-No.1090)	
2.0 +	extremely wet
1.5 to 1.99	very wet
1.0 to 1.49	moderately wet
-0.99 to 0.99	near normal
-1.0 to -1.49	moderately dry
-1.5 to -1.99	severely dry
-2 and less	extremely dry

SPI VALUES (According to Karavokyris & Partners)	
0 to -0.99	Mild drought
-1.0 to -1.49	Moderate drought
-1.5 to -1.99	Severe drought
-2 and less	Extreme drought

Hydrological Region	PRECIPITATION (mm)								DRY SPELLS Dry Spells Periods for selected Meteorological Rainfall Stations (Dry days: <=2.0 mm)	STANDARDIZED PRECIPITATION INDEX (SPI-n)									
	Monthly Area Aver. Precip.				Cumul. Area Aver. Precip.					SPI-1	SPI-3	SPI-6	SPI-9	SPI-12	SPI-24	SPI-36	SPI-48	SPI-60	
	Actual Precip. (mm)	Normal 1970-2010 (mm)	% of Normal	Deciles	Actual Cumul. Precip. (mm)	Normal Cumul. 1970-2010 (mm)	% of Normal	Deciles											
1-Pafos	73.2	117.3	62%	3	150.1	222.7	67%	2	094-Asprokremmos	2, 8, 17	-0.50	-0.77	-0.87	-1.11	-0.07	1.51	2.00	1.35	1.14
2-Polis	87.3	109.4	80%	4	174.2	212.3	82%	3	063-Evretou	2, 3, 2, 1, 17	-0.22	-0.42	-0.52	-0.50	0.06	1.33	1.76	1.10	0.97
3-Morfou	84.7	84.4	100%	6	142.9	156.9	91%	5	370-Kapoura	3, 8, 15	0.20	-0.09	-0.24	-0.50	0.40	1.84	2.63	1.71	1.41
6-Lefkosia	67.2	68.8	98%	6	104.4	130.2	80%	4	565-Politikos	2, 9, 16	0.19	-0.26	-0.47	-0.77	-0.05	1.50	1.86	0.99	0.57
7-Kokkinochoria	58.0	80.6	72%	5	145.8	141.2	103%	7	845-Frenaros	1, 8, 16	-0.18	0.22	0.18	-0.04	0.50	1.75	1.65	0.84	0.33
8-Larnaka	74.1	90.1	82%	5	105.4	163.3	65%	3	592-Lefkara	2, 9, 6, 9	-0.04	-0.73	-0.87	-0.98	-0.19	1.62	1.94	1.15	0.68
9-Lemesos	72.7	112.1	65%	4	123.0	203.3	60%	2	313-Kouris	1, 9, 16	-0.40	-0.91	-1.05	-1.28	0.06	1.90	2.52	1.83	1.75
CYPRUS	75.3	97.8	77%	4	133.9	181.4	74%	3			-0.21	-0.58	-0.73	-0.90	0.05	1.76	2.28	1.49	1.23

Note 1 (SPI According to):

Desert Action, IES(Institute for Environment and Sustainability) and JRC (European Commission)

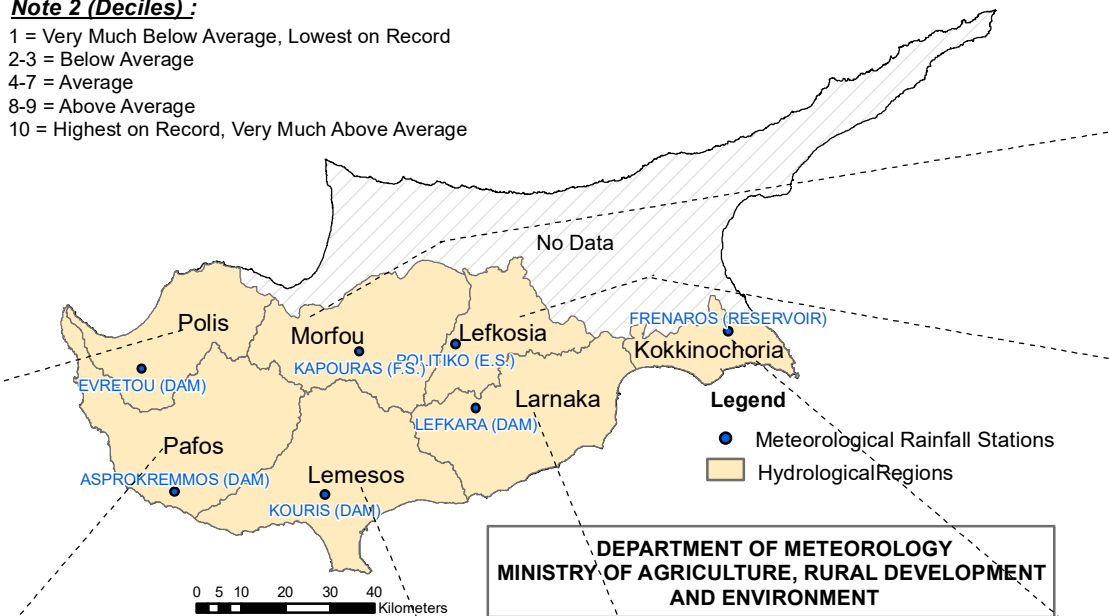
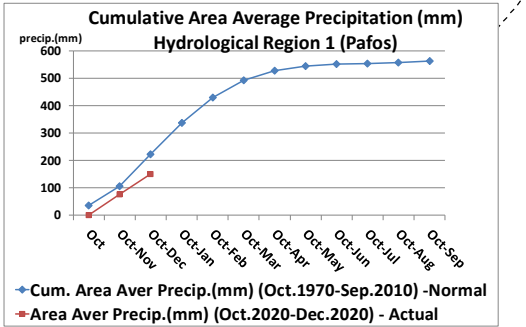
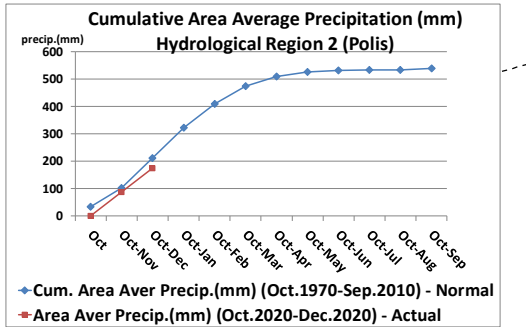
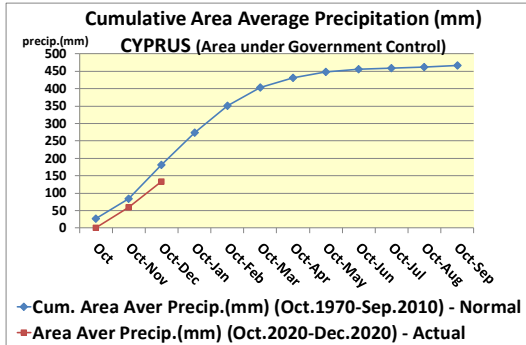
SPI-1 to SPI-3 are indicators for immediate impacts such as reduced soil moisture, snowpack, and flow in smaller creeks

SPI-3 to SPI-12 are indicators for reduced stream flow and reservoir storage

SPI-12 to SPI-48 are indicators for reduced reservoir and groundwater recharge

Note 2 (Deciles):

- 1 = Very Much Below Average, Lowest on Record
- 2-3 = Below Average
- 4-7 = Average
- 8-9 = Above Average
- 10 = Highest on Record, Very Much Above Average



**DEPARTMENT OF METEOROLOGY
MINISTRY OF AGRICULTURE, RURAL DEVELOPMENT
AND ENVIRONMENT**

