

# AREA AVERAGE PRECIPITATION (mm) AND STANDARDIZED PRECIPITATION INDEX (SPI) PER HYDROLOGICAL REGION

MONTH: AUGUST 2020

SPI VALUES ( According to WMO-No.1090)	
2.0 +	extremely wet
1.5 to 1.99	very wet
1.0 to 1.49	moderately wet
-0.99 to 0.99	near normal
-1.0 to -1.49	moderately dry
-1.5 to -1.99	severely dry
-2 and less	extremely dry

SPI VALUES ( According to Karavokyris & Partners)	
0 to -0.99	Mild drought
-1.0 to -1.49	Moderate drought
-1.5 to -1.99	Severe drought
-2 and less	Extreme drought

Hydrological Region	PRECIPITATION (mm)								DRY SPELLS	STANDARDIZED PRECIPITATION INDEX (SPI-n)									
	Monthly Area Aver. Precip.				Cumul. Area Aver. Precip.					Dry Spells Periods for selected Meteorological Rainfall Stations (Dry days: <=2.0 mm)	SPI-1	SPI-3	SPI-6	SPI-9	SPI-12	SPI-24	SPI-36	SPI-48	SPI-60
	Actual Precip. (mm)	Normal 1970-2010 (mm)	% of Normal	Deciles	Actual Cumul. Precip. (mm)	Normal Cumul. 1970-2010 (mm)	% of Normal	Deciles											
1-Pafos	0.9	3.0	29%	5	751.6	558.2	135%	9	094-Asprokremmos	31	-0.11	-0.99	-0.66	1.40	1.19	2.34	2.08	1.77	0.99
2-Polis	0.2	1.5	12%	6	702.0	534.9	131%	9	063-Evretou	31	0.25	-0.90	-0.22	1.28	1.17	2.01	1.69	1.55	0.82
3-Morfou	0.7	4.4	15%	5	580.9	435.8	133%	9	370-Kapoura	31	-0.05	-1.25	0.14	1.18	1.26	2.51	2.31	1.99	1.24
6-Lefkosia	0.0	4.2	0%	1	418.2	355.0	118%	8	565-Politiko(Tamasos)	31	-0.20	-1.49	-0.13	0.74	0.79	2.02	1.64	1.19	0.51
7-Kokkinochoria	0.1	0.3	19%	9	455.3	324.1	141%	9	845-Frenaros	31	*	*	-0.02	1.44	1.34	2.02	1.34	0.88	-0.03
8-Larnaka	0.0	2.0	2%	1	547.1	404.4	135%	9	592-Lefkara	31	-0.05	-1.30	0.09	1.10	1.20	2.28	1.93	1.46	0.87
9-Lemesos	1.3	3.7	37%	5	748.9	511.7	146%	10	313-Kouris	31	-0.34	-0.96	-0.15	1.46	1.62	2.80	2.52	2.39	1.76
<b>CYPRUS</b>	<b>0.4</b>	<b>2.9</b>	<b>14%</b>	<b>3</b>	<b>626.3</b>	<b>461.4</b>	<b>136%</b>	<b>9</b>			<b>-0.52</b>	<b>-1.44</b>	<b>-0.17</b>	<b>1.33</b>	<b>1.33</b>	<b>2.50</b>	<b>2.18</b>	<b>1.91</b>	<b>1.14</b>

**Note 1 (SPI According to):**

Desert Action, IES(Institute for Environment and Sustainability) and JRC (European Commission)

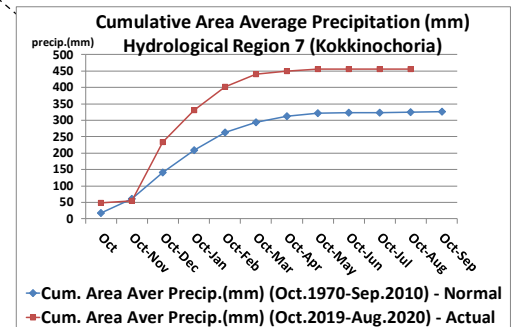
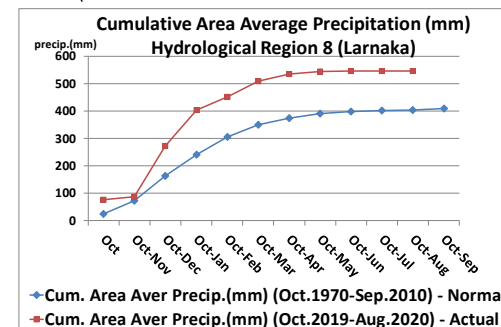
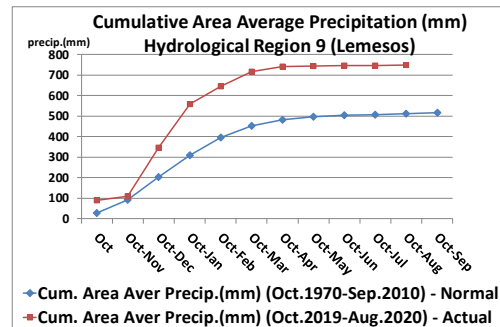
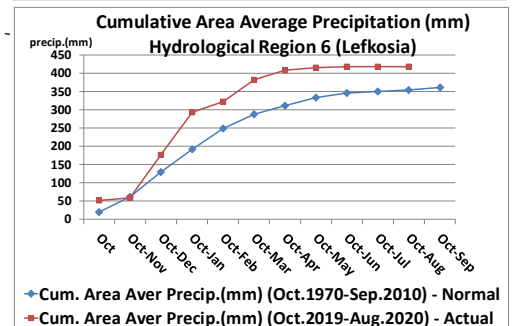
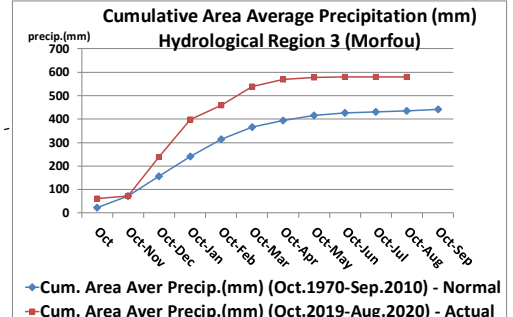
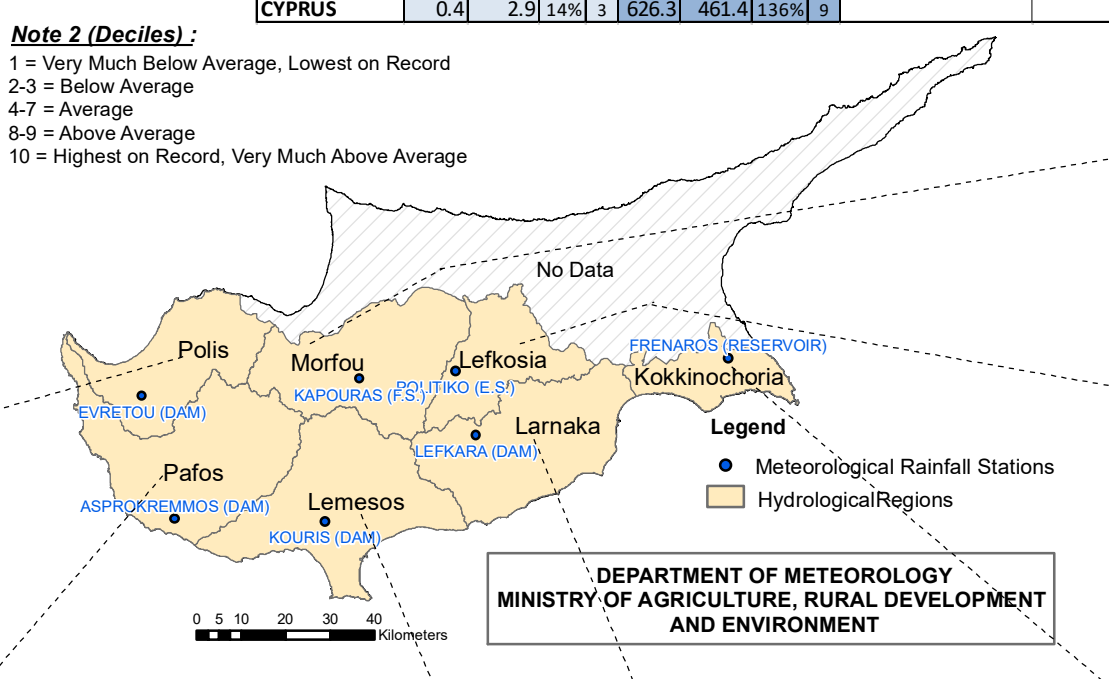
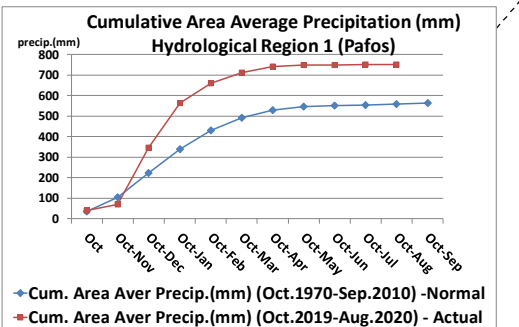
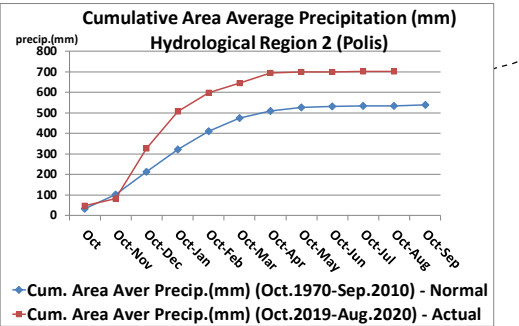
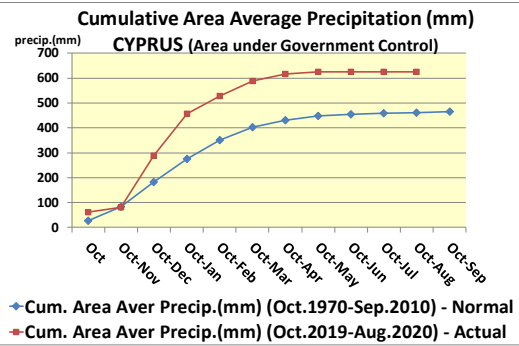
SPI-1 to SPI-3 are indicators for immediate impacts such as reduced soil moisture, snowpack, and flow in smaller creeks

SPI-3 to SPI-12 are indicators for reduced stream flow and reservoir storage

SPI-12 to SPI-48 are indicators for reduced reservoir and groundwater recharge

**Note 2 (Deciles):**

- 1 = Very Much Below Average, Lowest on Record
- 2-3 = Below Average
- 4-7 = Average
- 8-9 = Above Average
- 10 = Highest on Record, Very Much Above Average



DEPARTMENT OF METEOROLOGY  
MINISTRY OF AGRICULTURE, RURAL DEVELOPMENT  
AND ENVIRONMENT