

AREA AVERAGE PRECIPITATION (mm) AND STANDARDIZED PRECIPITATION INDEX (SPI) PER HYDROLOGICAL REGION

MONTH: SEPTEMBER 2019

SPI VALUES (According to WMO-No.1090)	
2.0 +	extremely wet
1.5 to 1.99	very wet
1.0 to 1.49	moderately wet
-0.99 to 0.99	near normal
-1.0 to -1.49	moderately dry
-1.5 to -1.99	severely dry
-2 and less	extremely dry

SPI VALUES (According to Karavokyris & Partners)	
0 to -0.99	Mild drought
-1.0 to -1.49	Moderate drought
-1.5 to -1.99	Severe drought
-2 and less	Extreme drought

Hydrological Region	PRECIPITATION (mm)								DRY SPELLS Dry Spells Periods for selected Meteorological Rainfall Stations (Dry days: <=2.0 mm)	STANDARDIZED PRECIPITATION INDEX (SPI-n)									
	Monthly Area Aver. Precip.				Cumul. Area Aver. Precip.					SPI-1	SPI-3	SPI-6	SPI-9	SPI-12	SPI-24	SPI-36	SPI-48	SPI-60	
	Actual Precip. (mm)	Normal 1970-2010 (mm)	% of Normal	Deciles	Actual Cumul. Precip. (mm)	Normal Cumul. 1970-2010 (mm)	% of Normal	Deciles											
1-Pafos	5.4	5.5	99%	8	969.6	563.6	172%	10	094-Asprokremmos	30	0.29	0.81	0.48	2.13	2.47	1.86	1.36	0.51	0.76
2-Polis	9.6	4.3	224%	9	824.7	539.2	153%	10	063-Evretou	13, 16	0.90	0.78	0.12	1.61	1.91	1.36	1.09	0.24	0.71
3-Morfou	17.7	5.0	355%	9	757.4	440.8	172%	10	370-Kapoura	13, 16	1.33	1.15	0.63	1.95	2.35	1.94	1.48	0.62	1.01
6-Lefkosia	19.6	6.7	293%	9	618.9	361.7	171%	10	565-Politiko	closed	1.30	0.81	0.51	2.10	2.17	1.54	0.99	0.21	0.63
7-Kokkinochoria	4.7	1.7	282%	9	509.2	325.7	156%	9	845-Frenaros	14, 15	1.03	0.92	0.36	1.93	1.79	0.76	0.22	-0.74	-0.73
8-Larnaka	16.9	5.8	290%	9	716.0	410.3	175%	10	592-Lefkara	14, 14	1.23	1.22	0.75	2.23	2.23	1.59	0.98	0.30	0.74
9-Lemesos	16.4	5.7	288%	9	929.5	517.3	180%	10	313-Kouris	14, 15	1.15	1.28	0.93	2.38	2.69	2.04	1.67	0.91	1.29
CYPRUS	13.1	5.0	261%	9	795.9	466.4	171%	10			1.16	1.15	0.66	2.27	2.47	1.81	1.34	0.46	0.87

Note 1 (SPI According to):

Desert Action, IES(Institute for Environment and Sustainability) and JRC (European Commission)

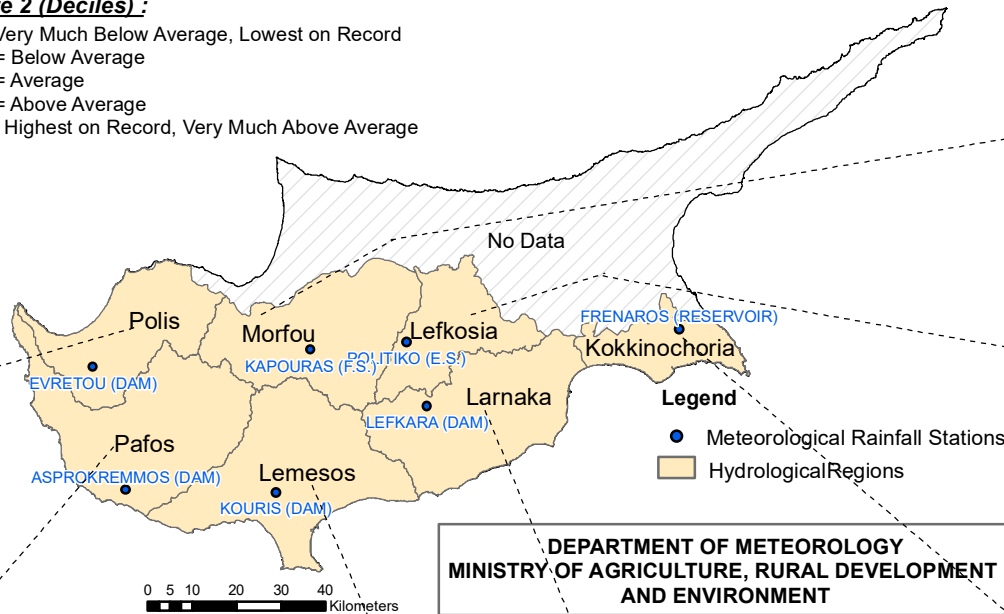
SPI-1 to SPI-3 are indicators for immediate impacts such as reduced soil moisture, snowpack, and flow in smaller creeks

SPI-3 to SPI-12 are indicators for reduced stream flow and reservoir storage

SPI-12 to SPI-48 are indicators for reduced reservoir and groundwater recharge

Note 2 (Deciles):

- 1 = Very Much Below Average, Lowest on Record
- 2-3 = Below Average
- 4-7 = Average
- 8-9 = Above Average
- 10 = Highest on Record, Very Much Above Average



DEPARTMENT OF METEOROLOGY
MINISTRY OF AGRICULTURE, RURAL DEVELOPMENT AND ENVIRONMENT

