

AREA AVERAGE PRECIPITATION (mm) AND STANDARDIZED PRECIPITATION INDEX (SPI) PER HYDROLOGICAL REGION

MONTH: MAY 2019

SPI VALUES (According to WMO-No.1090)	
2.0 +	extremely wet
1.5 to 1.99	very wet
1.0 to 1.49	moderately wet
-0.99 to 0.99	near normal
-1.0 to -1.49	moderately dry
-1.5 to -1.99	severely dry
-2 and less	extremely dry

SPI VALUES (According to Karavokyris & Partners)	
0 to -0.99	Mild drought
-1.0 to -1.49	Moderate drought
-1.5 to -1.99	Severe drought
-2 and less	Extreme drought

Hydrological Region	PRECIPITATION (mm)								DRY SPELLS	STANDARDIZED PRECIPITATION INDEX (SPI-n)									
	Monthly Area Aver. Precip.				Cumul. Area Aver. Precip.					Dry Spells Periods for selected Meteorological Rainfall Stations (Dry days: <=2.0 mm)	SPI-1	SPI-3	SPI-6	SPI-9	SPI-12	SPI-24	SPI-36	SPI-48	SPI-60
	Actual Precip. (mm)	Normal 1970-2010 (mm)	% of Normal	Deciles	Actual Cumul. Precip. (mm)	Normal 1970-2010 (mm)	% of Normal	Deciles											
1-Pafos	2.7	17.5	15%	2	927.8	546.0	170%	10	094-Asprokremmos	31	-1.14	0.73	2.12	2.26	2.39	1.68	1.23	0.34	0.70
2-Polis	6.0	16.5	36%	4	798.2	526.6	152%	10	063-Evretou	8, 22	-0.70	0.40	1.70	1.84	1.85	1.25	1.01	0.21	0.67
3-Morfou	0.9	20.7	5%	1	702.5	415.2	169%	10	370-Kapoura	31	-1.49	0.39	1.78	2.30	2.36	1.71	1.21	0.34	0.88
6-Lefkosia	0.3	22.1	1%	1	566.2	334.4	169%	10	565-Politiko	closed	-1.54	0.72	1.95	2.05	2.27	1.32	0.81	0.00	0.56
7-Kokkinochoria	0.1	9.0	1%	1	485.4	321.6	151%	9	845-Frenaros	31	-0.90	0.09	1.77	1.61	1.62	0.60	0.09	-0.80	-0.78
8-Larnaka	0.1	16.4	1%	1	676.2	391.9	173%	10	592-Lefkara	31	-1.39	0.94	2.05	2.14	2.22	1.36	0.81	0.14	0.67
9-Lemesos	1.4	15.0	10%	1	875.3	497.3	176%	10	313-Kouris	31	-1.89	0.88	2.32	2.42	2.58	1.81	1.50	0.67	1.19
CYPRUS	1.6	16.8	10%	1	752.5	448.2	168%	10			-1.50	0.72	2.13	2.28	2.39	1.58	1.16	0.27	0.79

Note 1 (SPI According to):

Desert Action, IES(Institute for Environment and Sustainability) and JRC (European Commission)

SPI-1 to SPI-3 are indicators for immediate impacts such as reduced soil moisture, snowpack, and flow in smaller creeks

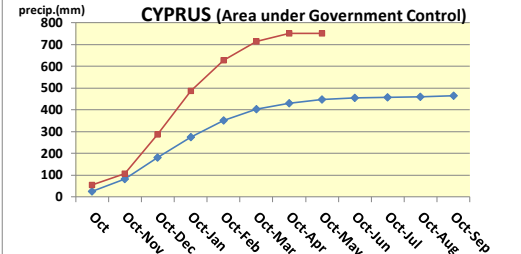
SPI-3 to SPI-12 are indicators for reduced stream flow and reservoir storage

SPI-12 to SPI-48 are indicators for reduced reservoir and groundwater recharge

Note 2 (Deciles):

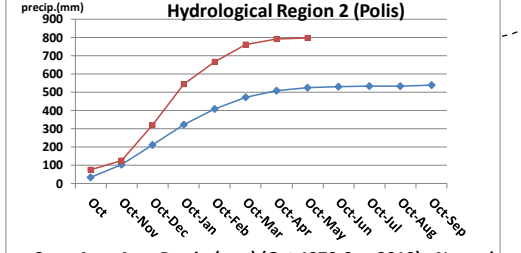
- 1 = Very Much Below Average, Lowest on Record
- 2-3 = Below Average
- 4-7 = Average
- 8-9 = Above Average
- 10 = Highest on Record, Very Much Above Average

Cumulative Area Average Precipitation (mm)



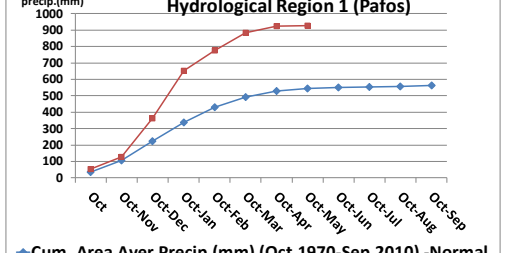
◆ Cum. Area Aver Precip.(mm) (Oct.1970-Sep.2010) - Normal
 ◆ Cum. Area Aver Precip.(mm) (Oct.2018-May.2019) - Actual

Cumulative Area Average Precipitation (mm)

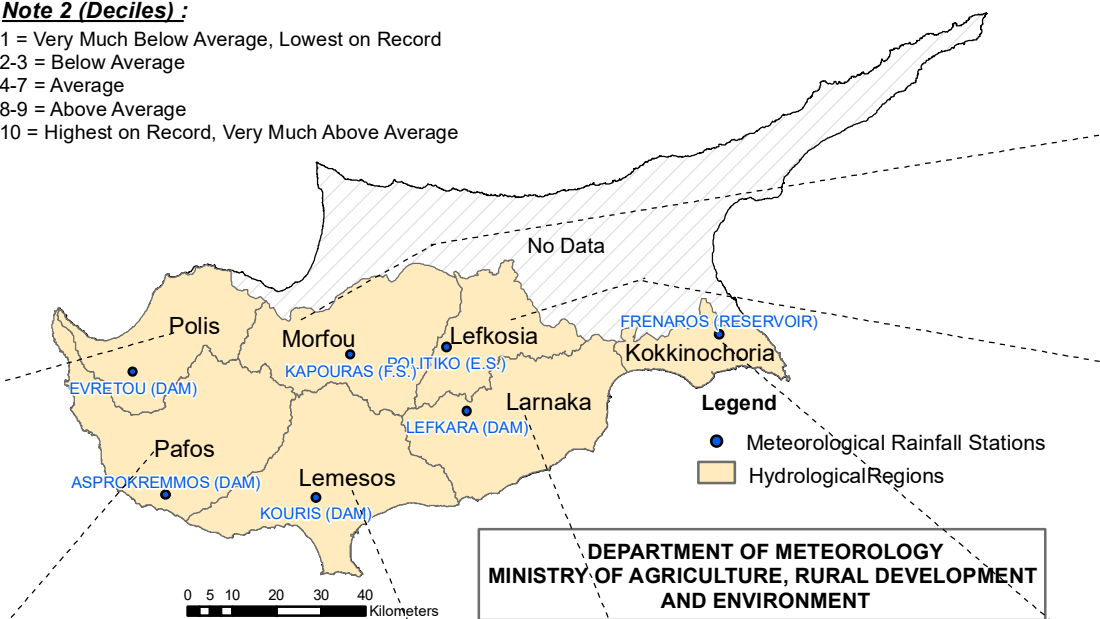


◆ Cum. Area Aver Precip.(mm) (Oct.1970-Sep.2010) - Normal
 ◆ Cum. Area Aver Precip.(mm) (Oct.2018-May.2019) - Actual

Cumulative Area Average Precipitation (mm)

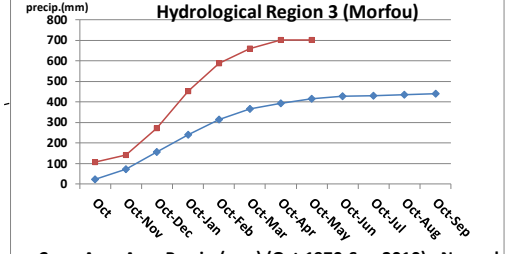


◆ Cum. Area Aver Precip.(mm) (Oct.1970-Sep.2010) - Normal
 ◆ Cum. Area Aver Precip.(mm) (Oct.2018-May.2019) - Actual



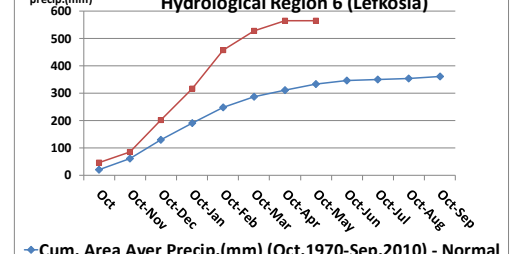
**DEPARTMENT OF METEOROLOGY
 MINISTRY OF AGRICULTURE, RURAL DEVELOPMENT
 AND ENVIRONMENT**

Cumulative Area Average Precipitation (mm)



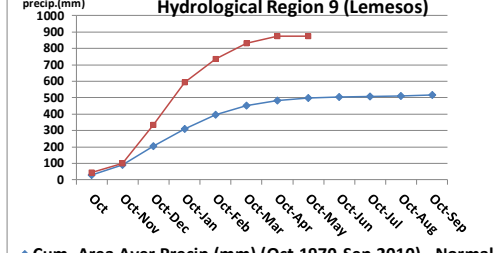
◆ Cum. Area Aver Precip.(mm) (Oct.1970-Sep.2010) - Normal
 ◆ Cum. Area Aver Precip.(mm) (Oct.2018-May.2019) - Actual

Cumulative Area Average Precipitation (mm)



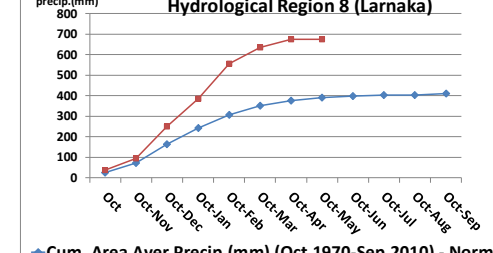
◆ Cum. Area Aver Precip.(mm) (Oct.1970-Sep.2010) - Normal
 ◆ Cum. Area Aver Precip.(mm) (Oct.2018-May.2019) - Actual

Cumulative Area Average Precipitation (mm)



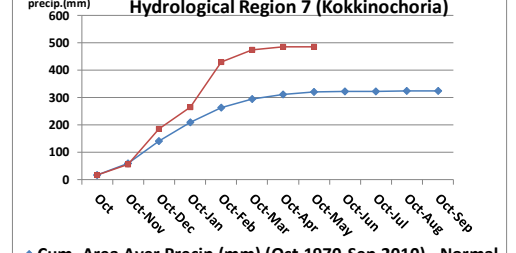
◆ Cum. Area Aver Precip.(mm) (Oct.1970-Sep.2010) - Normal
 ◆ Cum. Area Aver Precip.(mm) (Oct.2018-May.2019) - Actual

Cumulative Area Average Precipitation (mm)



◆ Cum. Area Aver Precip.(mm) (Oct.1970-Sep.2010) - Normal
 ◆ Cum. Area Aver Precip.(mm) (Oct.2018-May.2019) - Actual

Cumulative Area Average Precipitation (mm)



◆ Cum. Area Aver Precip.(mm) (Oct.1970-Sep.2010) - Normal
 ◆ Cum. Area Aver Precip.(mm) (Oct.2018-May.2019) - Actual