

AREA AVERAGE PRECIPITATION (mm) AND STANDARDIZED PRECIPITATION INDEX (SPI) PER HYDROLOGICAL REGION

MONTH: JULY 2019

SPI VALUES (According to WMO-No.1090)	
2.0 +	extremely wet
1.5 to 1.99	very wet
1.0 to 1.49	moderately wet
-0.99 to 0.99	near normal
-1.0 to -1.49	moderately dry
-1.5 to -1.99	severely dry
-2 and less	extremely dry

SPI VALUES (According to Karavokyris & Partners)	
0 to -0.99	Mild drought
-1.0 to -1.49	Moderate drought
-1.5 to -1.99	Severe drought
-2 and less	Extreme drought

Hydrological Region	PRECIPITATION (mm)								DRY SPELLS	STANDARDIZED PRECIPITATION INDEX (SPI-n)									
	Monthly Area Aver. Precip.				Cumul. Area Aver. Precip.					Dry Spells Periods for selected Meteorological Rainfall Stations (Dry days: <=2.0 mm)	SPI-1	SPI-3	SPI-6	SPI-9	SPI-12	SPI-24	SPI-36	SPI-48	SPI-60
	Actual Precip. (mm)	Normal 1970-2010 (mm)	% of Normal	Deciles	Actual Cumul. Precip. (mm)	Normal 1970-2010 (mm)	% of Normal	Deciles											
1-Pafos	1.1	3.0	37%	6	952.6	555.1	172%	10	094-Asprokremmos	31	0.17	0.15	1.16	2.27	2.36	1.75	1.31	0.42	0.71
2-Polis	0.6	1.7	38%	6	812.6	533.4	152%	10	063-Evretou	31	0.31	0.01	0.82	1.63	1.88	1.31	1.07	0.26	0.67
3-Morfou	0.5	4.5	10%	5	730.1	431.4	169%	10	370-Kapoura	31	-0.08	-0.10	1.21	1.71	2.29	1.78	1.33	0.45	0.90
6-Lefkosia	1.1	4.5	24%	6	596.5	350.8	170%	10	565-Politiko	closed	0.04	-0.05	1.77	1.95	2.14	1.42	0.87	0.12	0.59
7-Kokkinochoria	0.0	0.2	7%	1	504.4	323.8	156%	9	845-Frenaros	31	*	0.70	2.11	1.76	1.73	0.72	0.20	-0.80	-0.73
8-Larnaka	2.0	2.9	69%	8	693.8	402.5	172%	10	592-Lefkara	31	0.37	-0.26	2.11	2.06	2.14	1.43	0.87	0.17	0.67
9-Lemesos	0.3	3.6	9%	2	899.6	508.0	177%	10	313-Kouris	31	-0.45	0.07	1.60	2.42	2.53	1.87	1.57	0.75	1.21
CYPRUS	0.8	3.0	26%	6	775.2	458.5	169%	10			0.08	0.01	1.62	2.19	2.35	1.66	1.25	0.35	0.80

Note 1 (SPI According to):

Desert Action, IES(Institute for Environment and Sustainability) and JRC (European Commission)

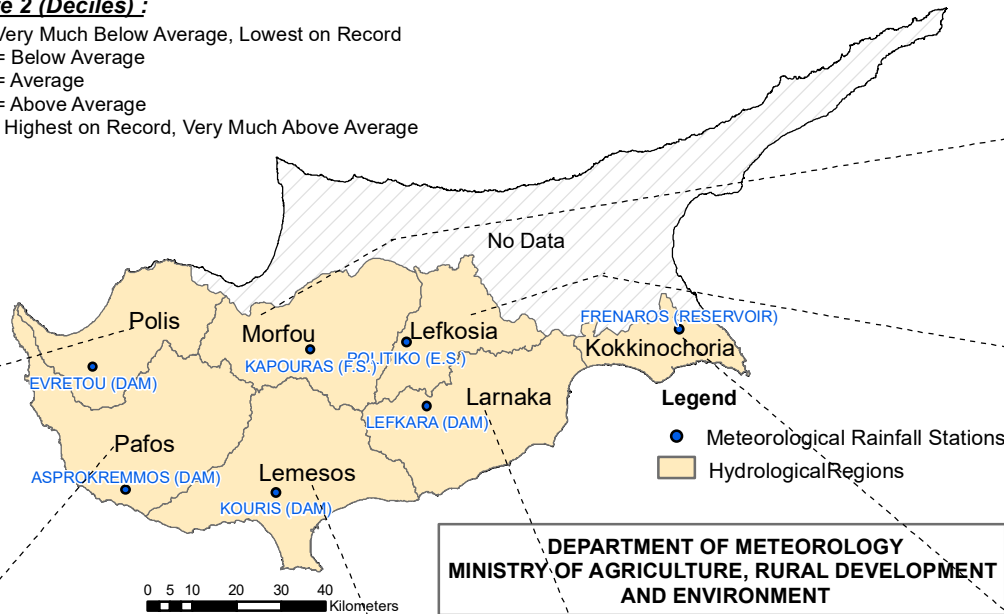
SPI-1 to SPI-3 are indicators for immediate impacts such as reduced soil moisture, snowpack, and flow in smaller creeks

SPI-3 to SPI-12 are indicators for reduced stream flow and reservoir storage

SPI-12 to SPI-48 are indicators for reduced reservoir and groundwater recharge

Note 2 (Deciles):

- 1 = Very Much Below Average, Lowest on Record
- 2-3 = Below Average
- 4-7 = Average
- 8-9 = Above Average
- 10 = Highest on Record, Very Much Above Average



DEPARTMENT OF METEOROLOGY
MINISTRY OF AGRICULTURE, RURAL DEVELOPMENT AND ENVIRONMENT

