

# AREA AVERAGE PRECIPITATION (mm) AND STANDARDIZED PRECIPITATION INDEX (SPI) PER HYDROLOGICAL REGION

**MONTH: SEPTEMBER 2018**

SPI VALUES ( According to WMO-No.1090)	
2.0 +	extremely wet
1.5 to 1.99	very wet
1.0 to 1.49	moderately wet
-0.99 to 0.99	near normal
-1.0 to -1.49	moderately dry
-1.5 to -1.99	severely dry
-2 and less	extremely dry

SPI VALUES ( According to Karavokyris & Partners)	
0 to -0.99	Mild drought
-1.0 to -1.49	Moderate drought
-1.5 to -1.99	Severe drought
-2 and less	Extreme drought

Hydrological Region	PRECIPITATION (mm)								DRY SPELLS	STANDARDIZED PRECIPITATION INDEX (SPI-n)									
	Monthly Area Aver. Precip.				Cumul. Area Aver. Precip.					Dry Spells Periods for selected Meteorological Rainfall Stations (Dry days: <=2.0 mm)	SPI-1	SPI-3	SPI-6	SPI-9	SPI-12	SPI-24	SPI-36	SPI-48	SPI-60
	Actual Precip. (mm)	Normal 1970-2010 (mm)	% of Normal	Deciles	Actual Cumul. Precip. (mm)	Normal Cumul. 1970-2010	% of Normal	Deciles											
1-Pafos	12.1	5.5	222%	9	573.2	563.6	102%	6	094-Asprokremmos	31	1.01	0.45	0.64	0.58	0.13	-0.22	-1.10	-0.63	-1.24
2-Polis	11.3	4.3	265%	9	530.5	539.2	98%	5	063-Evretou	8, 21	1.00	0.61	0.68	0.56	-0.03	-0.10	-0.98	-0.32	-1.18
3-Morfou	22.9	5.0	459%	9	444.3	440.8	101%	5	370-Kapoura	8, 1, 19	1.65	0.97	1.64	0.97	0.14	-0.35	-1.27	-0.71	-1.45
6-Lefkosia	14.2	6.7	212%	9	324.2	361.7	90%	4	565-Politiko(Tamasos)	7, 20, 1	0.95	0.67	1.21	0.18	-0.26	-0.73	-1.49	-0.83	-1.40
7-Kokkinochoria	0.0	1.7	3%		228.3	325.7	70%	1	845-Frenaros	31	0.26	0.10	-1.76	-0.96	-1.02	-1.24	-2.18	-1.93	-2.64
8-Larnaka	12.6	5.8	215%	9	368.7	410.3	90%	4	592-Lefkara	6, 3, 19	0.98	0.67	0.65	0.06	-0.26	-0.77	-1.38	-0.75	-1.71
9-Lemesos	8.9	5.7	157%	9	497.6	517.3	96%	5	313-Kouris	31	0.64	0.20	0.74	0.46	-0.10	-0.23	-1.02	-0.54	-1.62
<b>CYPRUS</b>	<b>12.2</b>	<b>5.0</b>	<b>243%</b>	<b>9</b>	<b>451.2</b>	<b>466.4</b>	<b>97%</b>	<b>5</b>			<b>1.09</b>	<b>0.49</b>	<b>0.90</b>	<b>0.42</b>	<b>-0.14</b>	<b>-0.45</b>	<b>-1.34</b>	<b>-0.76</b>	<b>-1.67</b>

**Note 1 (SPI According to):**

Desert Action, IES(Institute for Environment and Sustainability) and JRC (European Commission)

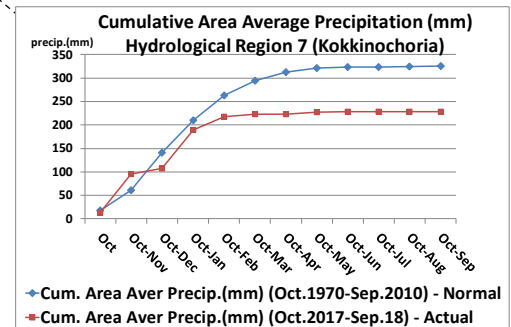
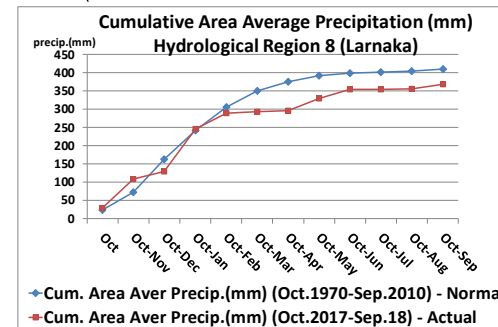
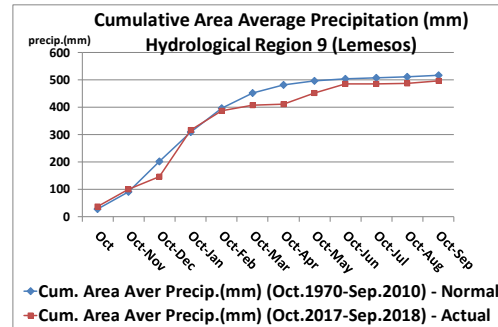
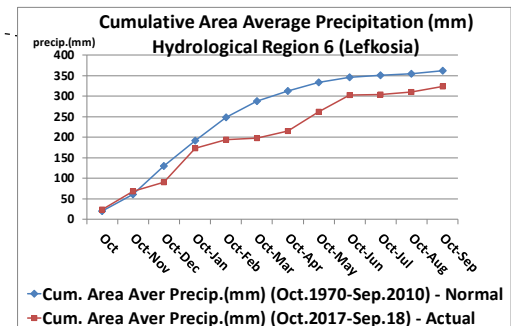
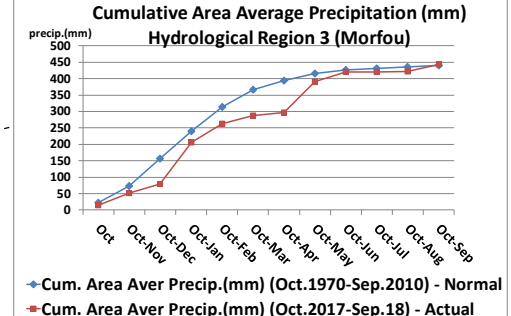
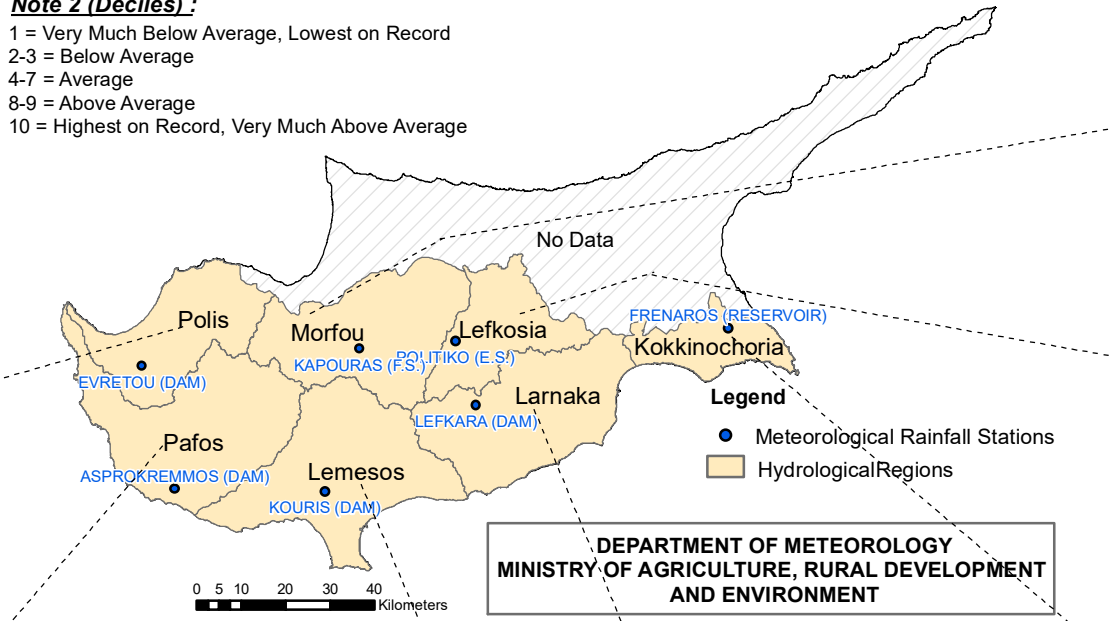
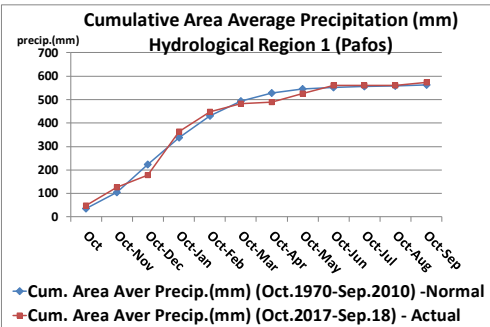
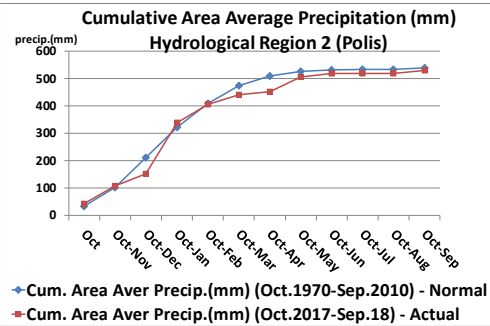
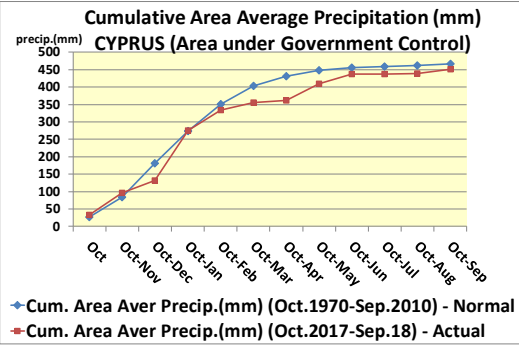
SPI-1 to SPI-3 are indicators for immediate impacts such as reduced soil moisture, snowpack, and flow in smaller creeks

SPI-3 to SPI-12 are indicators for reduced stream flow and reservoir storage

SPI-12 to SPI-48 are indicators for reduced reservoir and groundwater recharge

**Note 2 (Deciles):**

- 1 = Very Much Below Average, Lowest on Record
- 2-3 = Below Average
- 4-7 = Average
- 8-9 = Above Average
- 10 = Highest on Record, Very Much Above Average



**DEPARTMENT OF METEOROLOGY  
MINISTRY OF AGRICULTURE, RURAL DEVELOPMENT  
AND ENVIRONMENT**