

# AREA AVERAGE PRECIPITATION (mm) AND STANDARDIZED PRECIPITATION INDEX (SPI) PER HYDROLOGICAL REGION

MONTH: MARCH 2018

SPI VALUES ( According to WMO-No.1090)	
2.0 +	extremely wet
1.5 to 1.99	very wet
1.0 to 1.49	moderately wet
-0.99 to 0.99	near normal
-1.0 to -1.49	moderately dry
-1.5 to -1.99	severely dry
-2 and less	extremely dry

SPI VALUES ( According to Karavokyris & Partners)	
0 to -0.99	Mild drought
-1.0 to -1.49	Moderate drought
-1.5 to -1.99	Severe drought
-2 and less	Extreme drought

Hydrological Region	PRECIPITATION (mm)								DRY SPELLS	STANDARDIZED PRECIPITATION INDEX (SPI-n)									
	Monthly Area Aver. Precip.				Cumul. Area Aver. Precip.					Dry Spells Periods for selected Meteorological Rainfall Stations (Dry days: ≤2.0 mm)	SPI-1	SPI-3	SPI-6	SPI-9	SPI-12	SPI-24	SPI-36	SPI-48	SPI-60
	Actual Precip. (mm)	Normal 1970-2010 (mm)	% of Normal	Deciles	Actual Cumul. Precip. (mm)	Normal Cumul. 1970-2010 (mm)	% of Normal	Deciles											
1-Pafos	35.7	62.6	57%	2	483.1	492.5	98%	5	094-Asprokremmos	27, 2	-0.46	0.43	0.01	-0.06	-0.22	-0.42	-1.38	-0.53	-1.19
2-Polis	35.0	64.5	54%	2	442.2	474.7	93%	5	063-Evretou	27, 2	-0.49	0.39	-0.21	-0.22	-0.46	-0.34	-1.03	-0.36	-1.06
3-Morfou	24.6	52.5	47%	2	288.0	366.3	79%	2	370-Kapoura	27, 2	-0.67	0.15	-0.70	-0.80	-1.04	-1.21	-1.91	-0.88	-1.81
6-Lefosia	4.3	39.6	11%	1	198.1	288.7	69%	1	565-Politiko	22, 8	-1.71	-0.62	-0.90	-1.02	-1.19	-1.26	-2.04	-0.79	-1.74
7-Kokkinochoria	5.3	31.5	17%	1	222.7	294.3	76%	2	845-Frenaros	27, 3	-1.33	-0.42	-0.65	-0.67	-0.68	-1.15	-2.15	-1.62	-2.60
8-Larnaka	4.6	45.1	10%	1	293.5	351.1	84%	3	592-Lefara	27, 3	-1.67	-0.13	-0.42	-0.51	-0.63	-1.03	-1.74	-0.70	-1.70
9-Lemesos	19.8	55.4	36%	2	408.3	452.5	90%	4	313-Kouris	27, 2	-0.98	0.25	-0.25	-0.33	-0.46	-0.37	-1.43	-0.48	-1.55
CYPRUS	21.6	52.3	41%	2	351.8	402.7	87%	4			-0.85	0.11	-0.39	-0.47	-0.64	-0.75	-1.67	-0.70	-1.66

**Note 1 (SPI According to):**

Desert Action, IES(Institute for Environment and Sustainability) and JRC (European Commission)

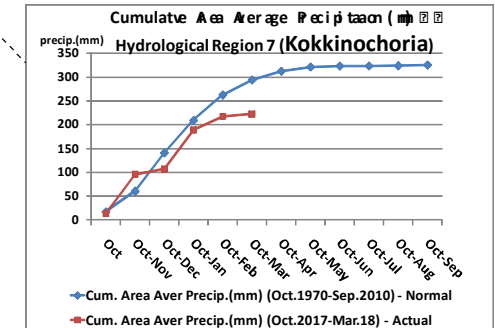
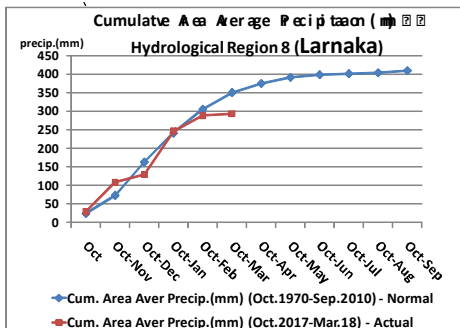
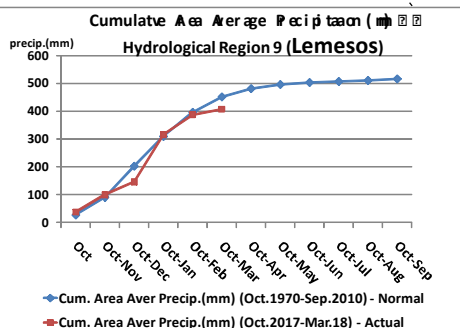
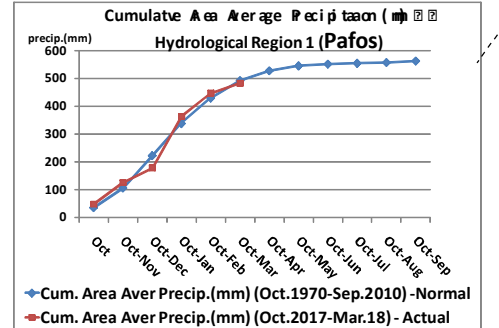
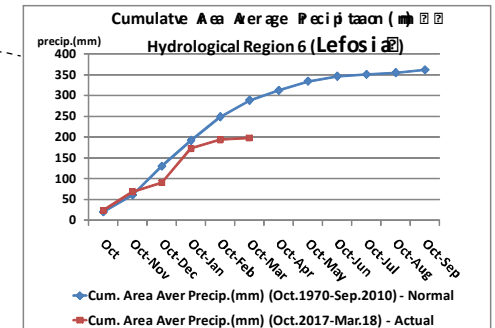
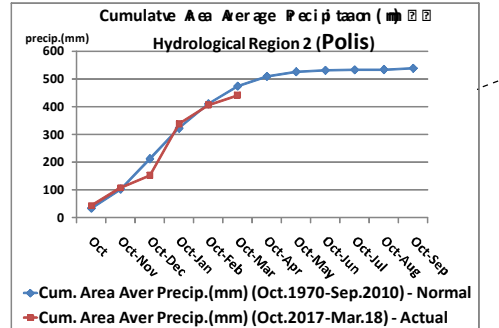
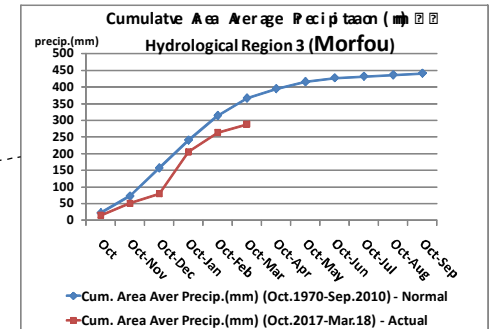
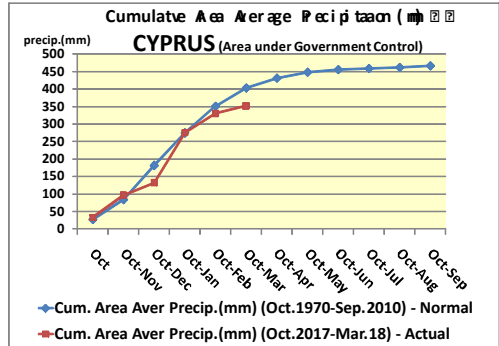
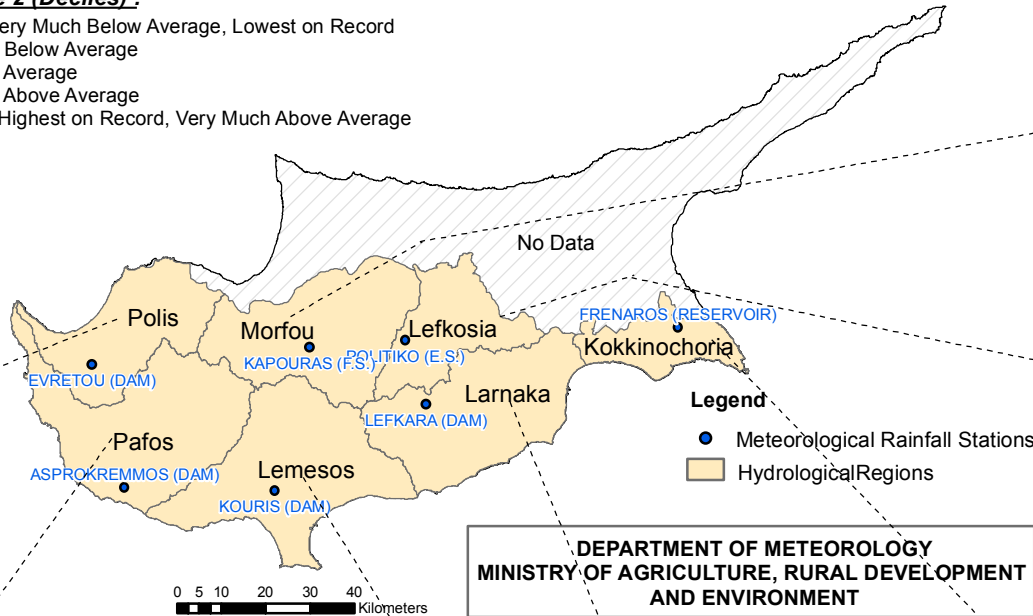
SPI-1 to SPI-3 are indicators for immediate impacts such as reduced soil moisture, snowpack, and flow in smaller creeks

SPI-3 to SPI-12 are indicators for reduced stream flow and reservoir storage

SPI-12 to SPI-48 are indicators for reduced reservoir and groundwater recharge

**Note 2 (Deciles):**

- 1 = Very Much Below Average, Lowest on Record
- 2-3 = Below Average
- 4-7 = Average
- 8-9 = Above Average
- 10 = Highest on Record, Very Much Above Average



DEPARTMENT OF METEOROLOGY  
MINISTRY OF AGRICULTURE, RURAL DEVELOPMENT  
AND ENVIRONMENT