

# AREA AVERAGE PRECIPITATION (mm) AND STANDARDIZED PRECIPITATION INDEX (SPI) PER HYDROLOGICAL REGION

MONTH: JUNE 2018

SPI VALUES ( According to WMO-No.1090)	
2.0 +	extremely wet
1.5 to 1.99	very wet
1.0 to 1.49	moderately wet
-0.99 to 0.99	near normal
-1.0 to -1.49	moderately dry
-1.5 to -1.99	severely dry
-2 and less	extremely dry

SPI VALUES ( According to Karavokyris & Partners)	
0 to -0.99	Mild drought
-1.0 to -1.49	Moderate drought
-1.5 to -1.99	Severe drought
-2 and less	Extreme drought

Hydrological Region	PRECIPITATION (mm)								DRY SPELLS	STANDARDIZED PRECIPITATION INDEX (SPI-n)									
	Monthly Area Aver. Precip.				Cumul. Area Aver. Precip.					Dry Spells Periods for selected Meteorological Rainfall Stations (Dry days: <=2.0 mm)	SPI-1	SPI-3	SPI-6	SPI-9	SPI-12	SPI-24	SPI-36	SPI-48	SPI-60
	Actual Precip. (mm)	Normal 1970-2010 (mm)	% of Normal	Deciles	Actual Cumul. Precip. (mm)	Normal Cumul. 1970-2010 (mm)	% of Normal	Deciles											
1-Pafos	34.8	6.2	564%	10	560.1	552.1	101%	6	094-Asprokremmos, 9, 18	2.39	0.63	0.56	0.12	0.06	-0.25	-1.19	-0.66	-1.28	
2-Polis	12.1	5.1	236%	9	518.9	531.7	98%	5	063-Evretou, 30	1.10	0.65	0.53	-0.05	-0.06	-0.11	-0.95	-0.38	-1.23	
3-Morfo	29.9	11.7	255%	9	420.3	426.9	98%	5	370-Kapoura, 13, 16	1.35	1.55	0.88	0.04	-0.04	-0.43	-1.38	-0.73	-1.49	
6-Lefkosia	40.8	11.9	343%	9	303.4	346.3	88%	4	565-Politiko(Tamasos), 5, 12	1.60	1.21	0.11	-0.32	-0.42	-0.83	-1.57	-0.82	-1.47	
7-Kokkinochoria	1.2	2.0	61%	8	228.2	323.6	71%	2	845-Frenaros, 31	0.34	-1.71	-0.90	-0.97	-0.98	-1.16	-2.21	-1.91	-2.62	
8-Larnaka	24.8	7.7	322%	9	354.6	399.6	89%	3	592-Lefkara, 1, 6, 18	1.54	0.60	0.01	-0.30	-0.37	-0.81	-1.48	-0.77	-1.71	
9-Lemosos	32.4	7.1	456%	9	485.7	504.4	96%	5	313-Kouris, 10, 18	2.17	0.86	0.47	-0.08	-0.14	-0.21	-1.13	-0.53	-1.65	
<b>CYPRUS</b>	<b>27.1</b>	<b>7.3</b>	<b>373%</b>	<b>9</b>	<b>437.3</b>	<b>455.4</b>	<b>96%</b>	<b>5</b>		<b>1.93</b>	<b>0.93</b>	<b>0.39</b>	<b>-0.15</b>	<b>-0.22</b>	<b>-0.47</b>	<b>-1.42</b>	<b>-0.78</b>	<b>-1.70</b>	

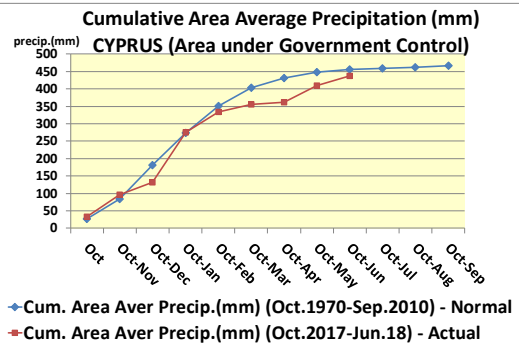
**Note 1 (SPI According to):**

Desert Action, IES(Institute for Environment and Sustainability) and JRC (European Commission)

SPI-1 to SPI-3 are indicators for immediate impacts such as reduced soil moisture, snowpack, and flow in smaller creeks

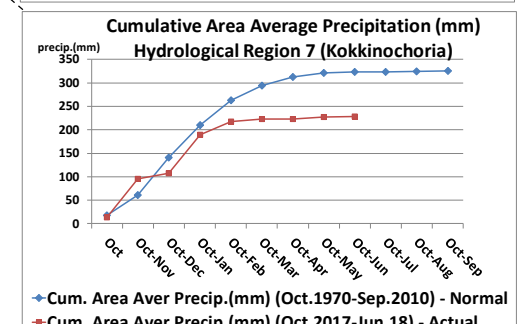
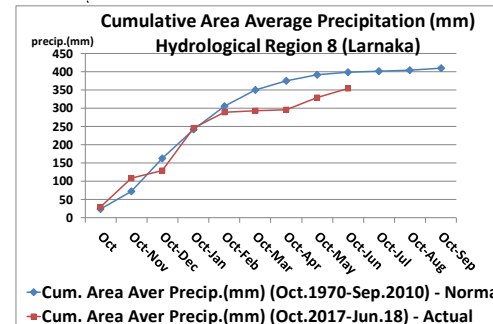
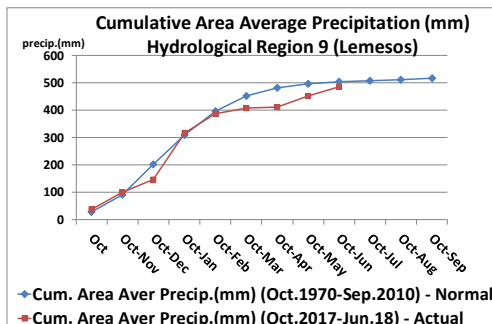
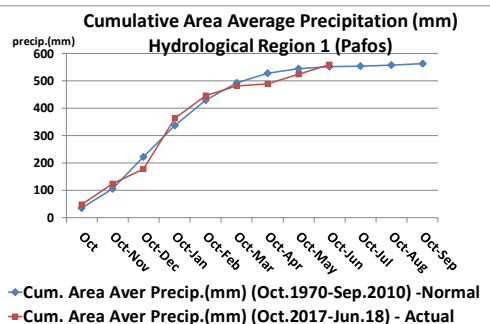
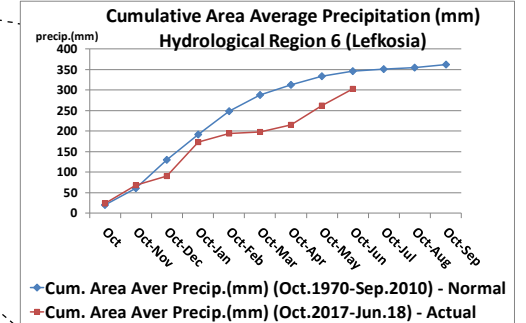
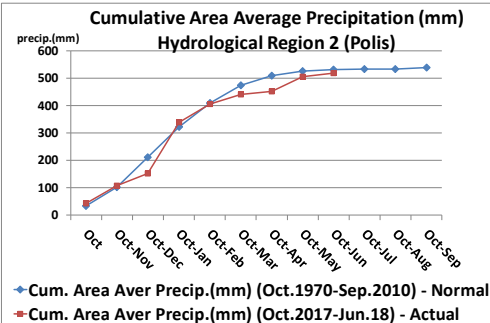
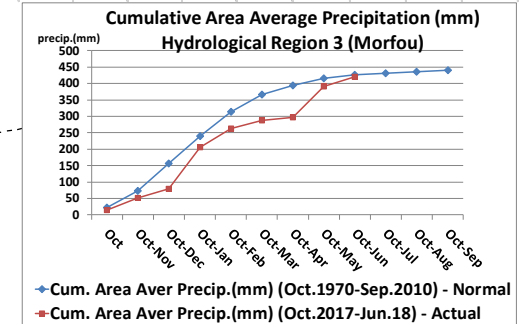
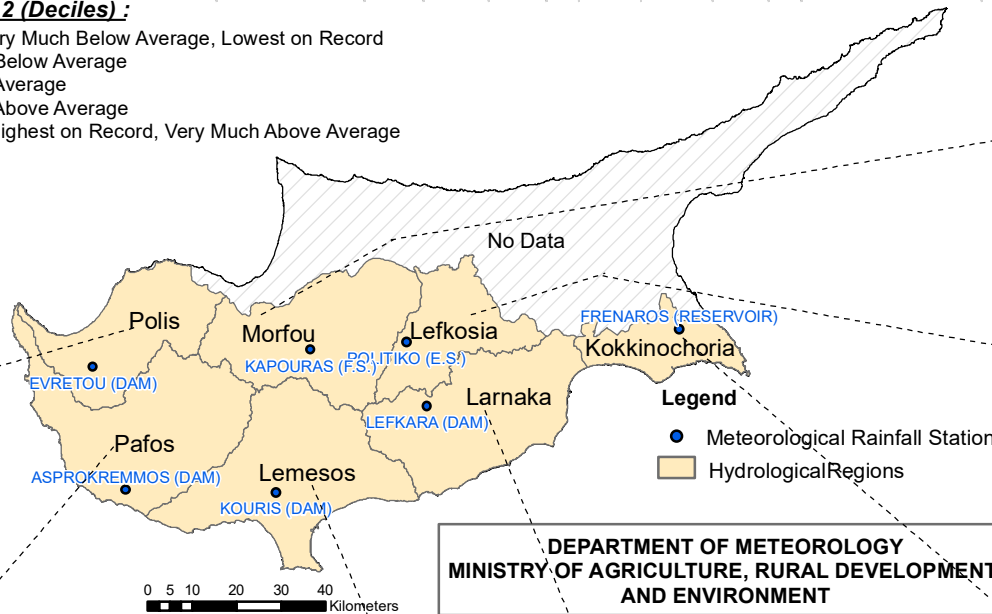
SPI-3 to SPI-12 are indicators for reduced stream flow and reservoir storage

SPI-12 to SPI-48 are indicators for reduced reservoir and groundwater recharge



**Note 2 (Deciles):**

- 1 = Very Much Below Average, Lowest on Record
- 2-3 = Below Average
- 4-7 = Average
- 8-9 = Above Average
- 10 = Highest on Record, Very Much Above Average



DEPARTMENT OF METEOROLOGY  
MINISTRY OF AGRICULTURE, RURAL DEVELOPMENT  
AND ENVIRONMENT