

# AREA AVERAGE PRECIPITATION (mm) AND STANDARDIZED PRECIPITATION INDEX (SPI) PER HYDROLOGICAL REGION

**MONTH: JULY 2018**

| SPI VALUES ( According to WMO-No.1090) |                |
|--|----------------|
| 2.0 +                                  | extremely wet  |
| 1.5 to 1.99                            | very wet       |
| 1.0 to 1.49                            | moderately wet |
| -0.99 to 0.99                          | near normal    |
| -1.0 to -1.49                          | moderately dry |
| -1.5 to -1.99                          | severely dry   |
| -2 and less                            | extremely dry  |

| SPI VALUES ( According to Karavokyris & Partners) |                  |
|---|------------------|
| 0 to -0.99  | Mild drought     |
| -1.0 to -1.49                                     | Moderate drought |
| -1.5 to -1.99                                     | Severe drought   |
| -2 and less                                       | Extreme drought  |

| Hydrological Region | PRECIPITATION (mm)         |                       |             |          |                            |                              |             |          | DRY SPELLS<br>Dry Spells Periods for selected Meteorological Rainfall Stations (Dry days: <=2.0 mm) | STANDARDIZED PRECIPITATION INDEX (SPI-n) |              |              |              |              |              |              |              |              |              |
|---------------------|----------------------------|-----------------------|-------------|----------|----------------------------|------------------------------|-------------|----------|---|--|--------------|--------------|--------------|--------------|--------------|--------------|--------------|--------------|--------------|
|                     | Monthly Area Aver. Precip. |                       |             |          | Cumul. Area Aver. Precip.  |                              |             |          |   | SPI-1                                    | SPI-3        | SPI-6        | SPI-9        | SPI-12       | SPI-24       | SPI-36       | SPI-48       | SPI-60       |              |
|                     | Actual Precip. (mm)        | Normal 1970-2010 (mm) | % of Normal | Deciles  | Actual Cumul. Precip. (mm) | Normal Cumul. 1970-2010 (mm) | % of Normal | Deciles  |   |  |              |              |              |              |              |              |              |              |              |
| 1-Pafos             | 0.1                        | 3.0                   | 4%          | 1        | 560.2                      | 555.1                        | 101%        | 6        | 094-Asprokremmos  | 31                                       | 0.00         | 1.65         | <b>-0.16</b> | 0.01         | 0.06         | <b>-0.25</b> | <b>-1.19</b> | <b>-0.68</b> | <b>-1.28</b> |
| 2-Polis             | 0.1                        | 1.7                   | 5%          | 5        | 519.0                      | 533.4                        | 97%         | 5        | 063-Evretou   | 31                                       | 0.16         | 1.55         | <b>-0.31</b> | <b>-0.13</b> | <b>-0.06</b> | <b>-0.11</b> | <b>-0.95</b> | <b>-0.39</b> | <b>-1.23</b> |
| 3-Morfo             | 0.2                        | 4.5                   | 5%          | 4        | 420.5                      | 431.4                        | 97%         | 5        | 370-Kapoura   | 31                                       | <b>-0.10</b> | 1.96         | 0.51         | 0.09         | <b>-0.03</b> | <b>-0.42</b> | <b>-1.37</b> | <b>-0.74</b> | <b>-1.49</b> |
| 6-Lefkosia          | 1.0                        | 4.5                   | 21%         | 6        | 304.4                      | 350.8                        | 87%         | 4        | 565-Politiko(Tamasos)   | 31                                       | 0.05         | 1.34         | <b>-0.28</b> | <b>-0.38</b> | <b>-0.39</b> | <b>-0.79</b> | <b>-1.53</b> | <b>-0.81</b> | <b>-1.43</b> |
| 7-Kokkinochoria     | 0.0                        | 0.2                   | 7%          |          | 228.2                      | 323.8                        | 70%         | 2        | 845-Frenaros  | 31                                       | *            | <b>-0.29</b> | <b>-1.83</b> | <b>-0.92</b> | <b>-0.98</b> | <b>-1.16</b> | <b>-2.20</b> | <b>-1.91</b> | <b>-2.62</b> |
| 8-Larnaka           | 0.7                        | 2.9                   | 25%         | 6        | 355.3                      | 402.5                        | 88%         | 3        | 592-Lefkara   | 31                                       | 0.21         | 1.29         | <b>-0.77</b> | <b>-0.34</b> | <b>-0.36</b> | <b>-0.79</b> | <b>-1.48</b> | <b>-0.77</b> | <b>-1.69</b> |
| 9-Lemesos           | 0.0                        | 3.6                   | 0%          | 1        | 485.7                      | 508.0                        | 96%         | 5        | 313-Kouris  | 31                                       | <b>-0.49</b> | 1.81         | <b>-0.34</b> | <b>-0.18</b> | <b>-0.15</b> | <b>-0.23</b> | <b>-1.13</b> | <b>-0.56</b> | <b>-1.64</b> |
| <b>CYPRUS</b>       | <b>0.3</b>                 | <b>3.0</b>            | <b>10%</b>  | <b>4</b> | <b>437.6</b>               | <b>458.5</b>                 | <b>95%</b>  | <b>5</b> |   |  | <b>-0.05</b> | 1.71         | <b>-0.35</b> | <b>-0.23</b> | <b>-0.22</b> | <b>-0.47</b> | <b>-1.42</b> | <b>-0.80</b> | <b>-1.69</b> |

**Note 1 (SPI According to):**

Desert Action, IES(Institute for Environment and Sustainability) and JRC (European Commission)

SPI-1 to SPI-3 are indicators for immediate impacts such as reduced soil moisture, snowpack, and flow in smaller creeks

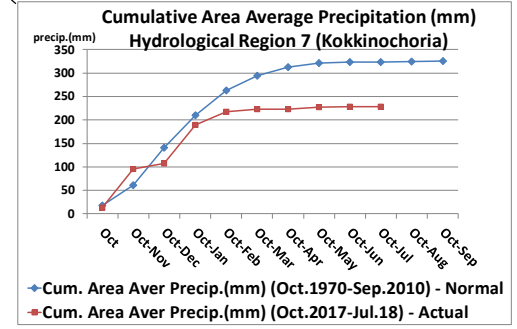
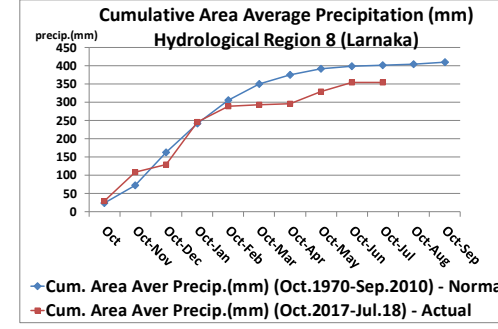
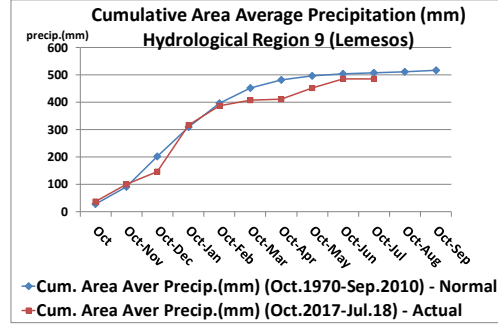
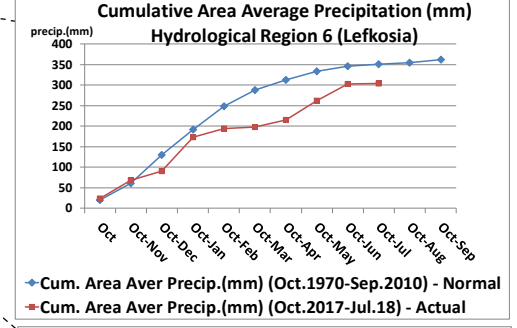
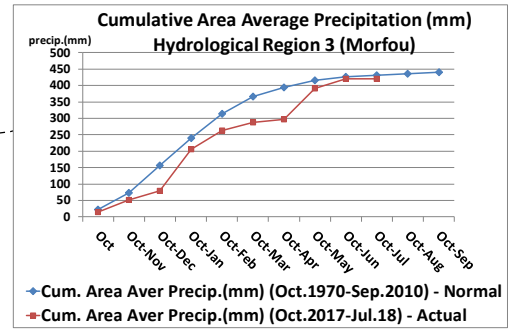
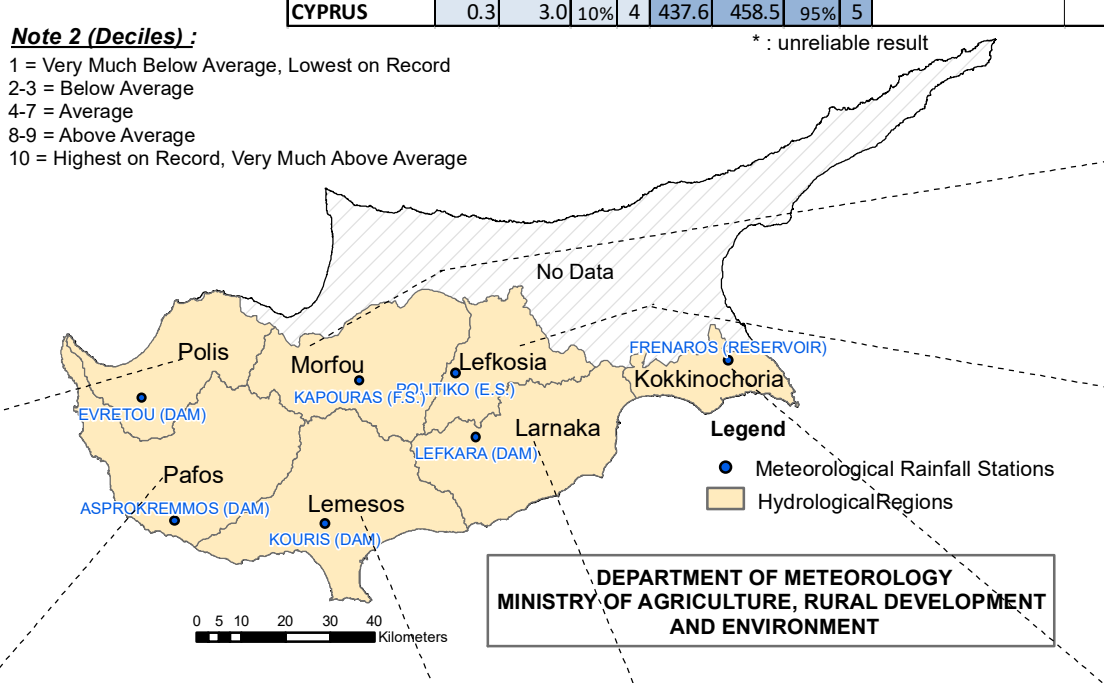
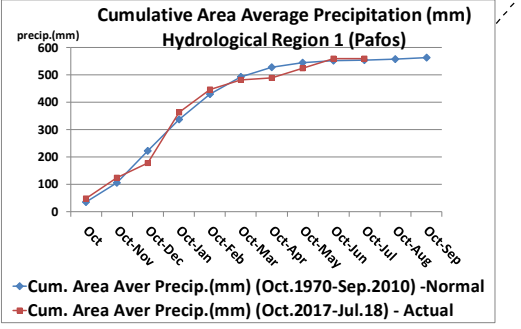
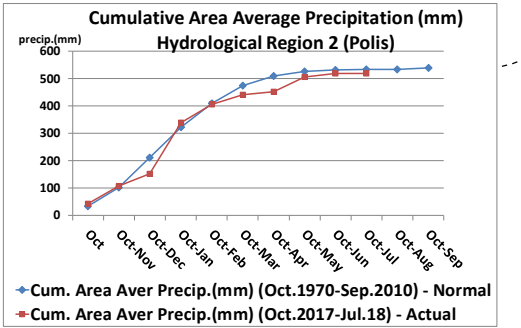
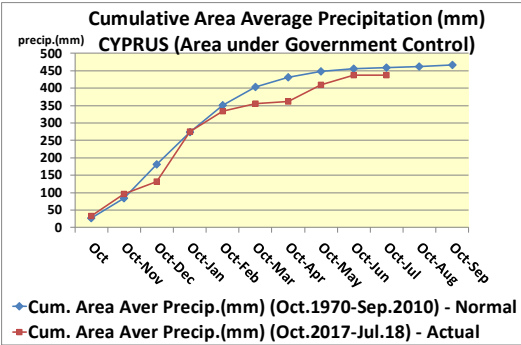
SPI-3 to SPI-12 are indicators for reduced stream flow and reservoir storage

SPI-12 to SPI-48 are indicators for reduced reservoir and groundwater recharge

**Note 2 (Deciles):**

- 1 = Very Much Below Average, Lowest on Record
- 2-3 = Below Average
- 4-7 = Average
- 8-9 = Above Average
- 10 = Highest on Record, Very Much Above Average

\* : unreliable result



**DEPARTMENT OF METEOROLOGY  
MINISTRY OF AGRICULTURE, RURAL DEVELOPMENT  
AND ENVIRONMENT**