

AREA AVERAGE PRECIPITATION (mm) AND STANDARDIZED PRECIPITATION INDEX (SPI) PER HYDROLOGICAL REGION

MONTH: JANUARY 2018

SPI VALUES (According to WMO-No.1090)	
2.0 +	extremely wet
1.5 to 1.99	very wet
1.0 to 1.49	moderately wet
-0.99 to 0.99	near normal
-1.0 to -1.49	moderately dry
-1.5 to -1.99	severely dry
-2 and less	extremely dry

SPI VALUES (According to Karavokyris & Partners)	
0 to -0.99	Mild drought
-1.0 to -1.49	Moderate drought
-1.5 to -1.99	Severe drought
-2 and less	Extreme drought

Hydrological Region	PRECIPITATION (mm)								DRY SPELLS	STANDARDIZED PRECIPITATION INDEX (SPI-n)									
	Monthly Area Aver. Precip.				Cumul. Area Aver. Precip.					Dry Spells Periods for selected Meteorological Rainfall Stations (Dry days: <=2.0 mm)	SPI-1	SPI-3	SPI-6	SPI-9	SPI-12	SPI-24	SPI-36	SPI-48	SPI-60
	Actual Precip. (mm)	Normal 1970-2010 (mm)	% of Normal	Deciles	Actual Cumul. Precip. (mm)	Normal Cumul. 1970-2010 (mm)	% of Normal	Deciles											
1-Pafos	185.2	115.6	160%	9	363.4	338.3	107%	7	094-Asprokremmos	1, 8, 2, 3, 1, 6	1.00	0.20	0.22	0.19	-0.43	-0.45	-0.90	-0.59	-1.31
2-Polis	185.9	109.8	169%	9	339.3	322.1	105%	6	063-Evretou	2, 8, 2, 3, 5	1.18	0.15	0.21	0.19	-0.45	-0.30	-0.44	-0.44	-1.09
3-Morfou	125.1	83.5	150%	9	205.1	240.4	85%	4	370-Kapoura	2, 7, 2, 3, 1, 5	0.90	-0.22	-0.43	-0.67	-1.10	-1.27	-1.30	-1.09	-2.03
6-Lefosia	82.3	62.1	133%	8	172.9	192.2	90%	4	565-Politiko	3, 7, 4, 3, 1, 6	0.65	-0.14	-0.20	-0.60	-0.90	-1.12	-1.35	-0.73	-1.81
7-Kokkinochoria	82.3	68.3	120%	7	189.3	209.6	90%	5	845-Frenaros	2, 12, 3, 1, 5	0.50	-0.04	-0.15	-0.05	-0.63	-1.13	-1.84	-1.57	-2.54
8-Larnaka	117.3	78.5	149%	9	247.0	241.8	102%	6	592-Lefara	2, 7, 2, 3, 1, 6	0.83	0.13	0.06	-0.08	-0.57	-1.03	-1.19	-0.65	-1.78
9-Lemesos	170.4	106.9	159%	9	316.5	310.3	102%	6	313-Kouris	2, 8, 2, 3, 1, 6	0.94	0.08	0.07	0.00	-0.45	-0.32	-0.92	-0.60	-1.69
CYPRUS	143.0	92.9	154%	9	275.1	274.3	100%	6			0.94	0.04	0.01	-0.10	-0.63	-0.73	-1.10	-0.75	-1.76

Note 1 (SPI According to):

Desert Action, IES(Institute for Environment and Sustainability) and JRC (European Commission)

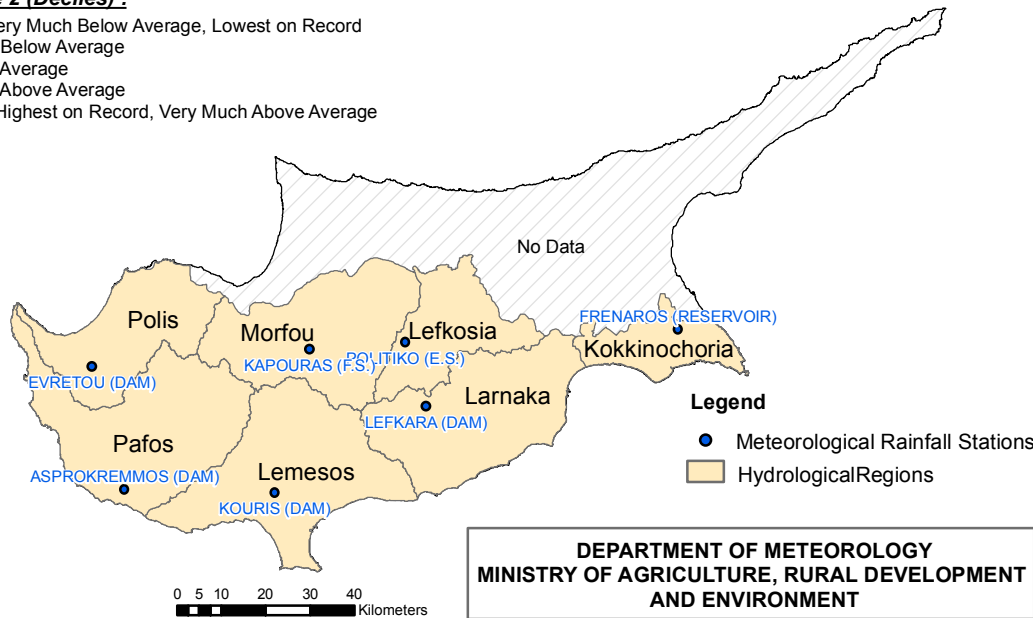
SPI-1 to SPI-3 are indicators for immediate impacts such as reduced soil moisture, snowpack, and flow in smaller creeks

SPI-3 to SPI-12 are indicators for reduced stream flow and reservoir storage

SPI-12 to SPI-48 are indicators for reduced reservoir and groundwater recharge

Note 2 (Deciles):

- 1 = Very Much Below Average, Lowest on Record
- 2-3 = Below Average
- 4-7 = Average
- 8-9 = Above Average
- 10 = Highest on Record, Very Much Above Average



**DEPARTMENT OF METEOROLOGY
MINISTRY OF AGRICULTURE, RURAL DEVELOPMENT
AND ENVIRONMENT**

