

Seasonal weather forecast for the months of

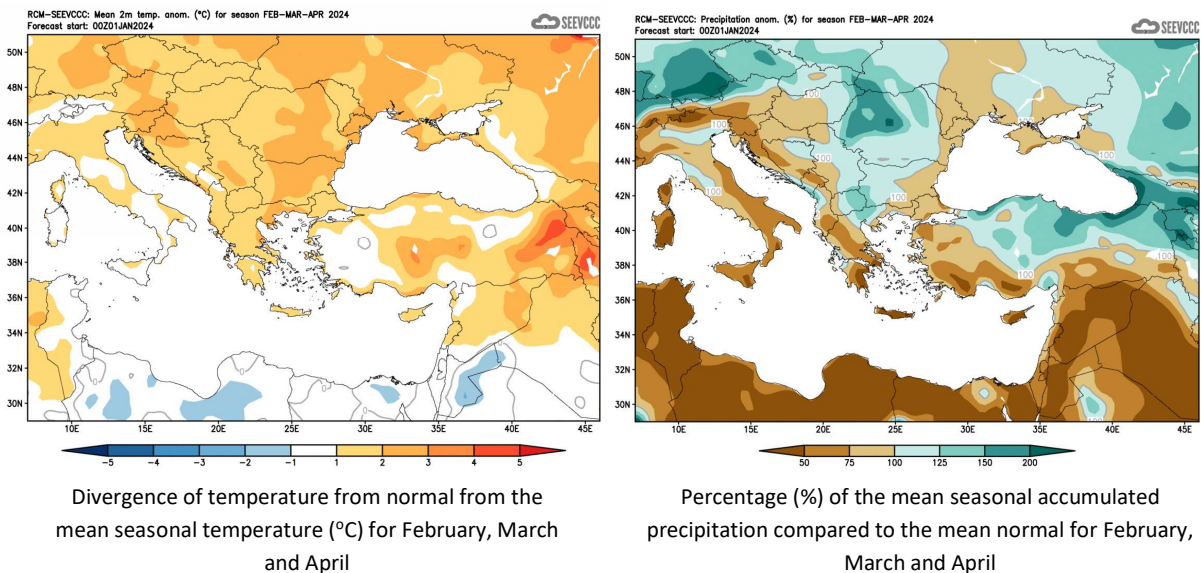
February, March and April 2024

General overview of the weather expected to prevail during February, March and April

The weather for the following period consists of a part (**February**) of the traditional winter, where the most of the annual accumulated precipitation is climatologically expected, while in the period in focus normal temperatures (both the maximum and the minimum) are significantly lower than the other months of the year (except **January**) and the first two months (**March** and **April**) of the traditional Spring, which is also a part of the period of forecast. During the period, the frequency of baroclinic depressions affecting the area is at its most resulting in higher accumulated precipitation amounts.

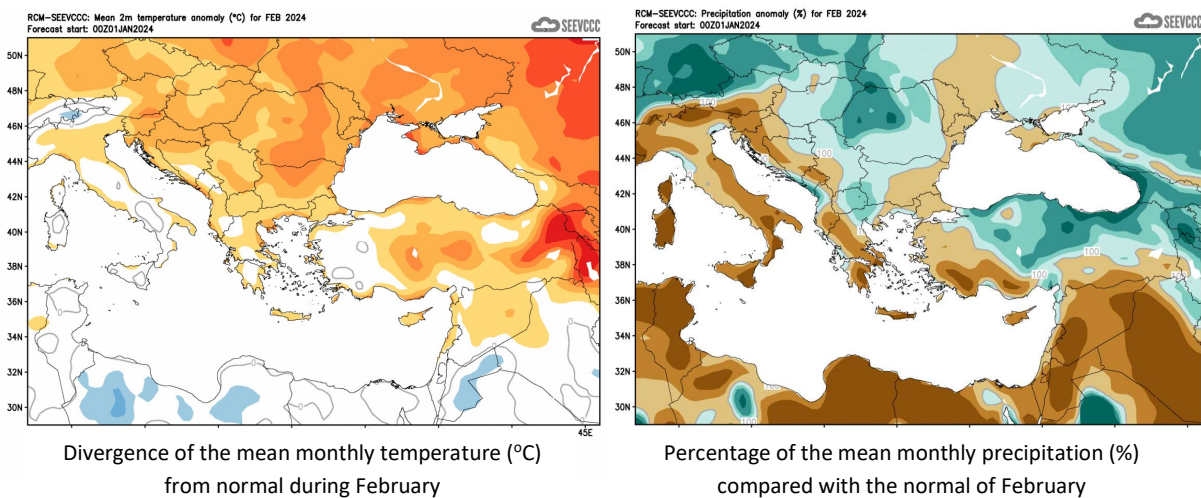
Seasonal forecast for the next three months

Regarding the seasonal forecast for the period of the last month of the winter season (**February**) and the first two months of the spring season (**March** and **April**) the temperature is expected to be generally above normal by 1 to 2°C. The amount of the accumulated precipitation is disappointing, since this will range between 50% and 75% of normal almost throughout the island, while in the southeastern part it will range below 50% of normal. Additionally, the entire surrounding area also has similar characteristics (*).

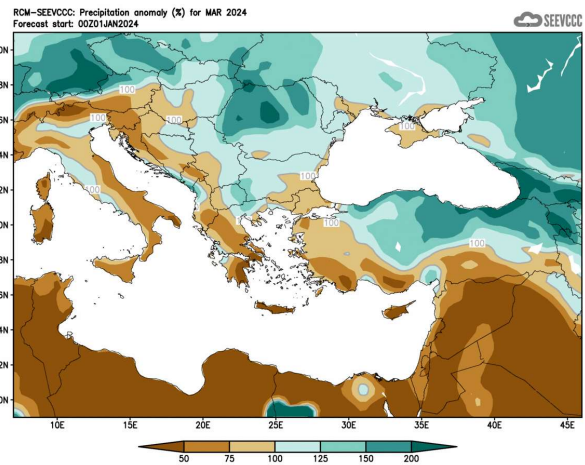
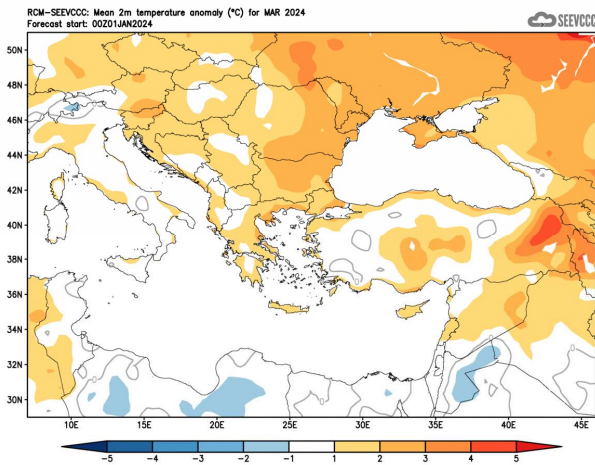


The seasonal monthly forecast in detail

The seasonal forecast for **February** suggests a warmer and drier than normal month. **February** will be warmer than normal by 1°C to 2°C. The accumulated precipitation, as resulted from the seasonal forecast, is to be again disappointing since the forecast suggests a mainly dry month with accumulation ranging between 50% and 75% of normal. All the above regarding temperature and or accumulated precipitation characteristics also apply for the surrounding area (*).



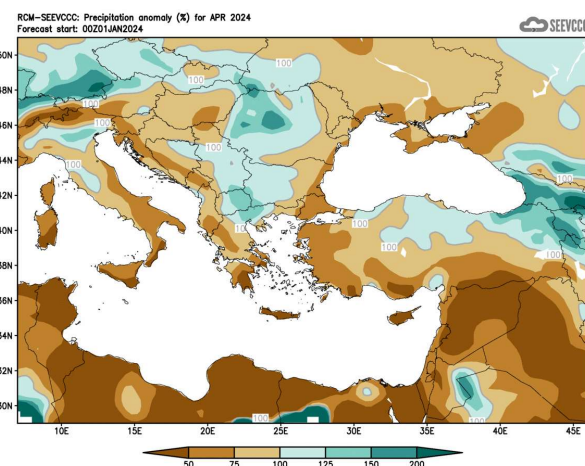
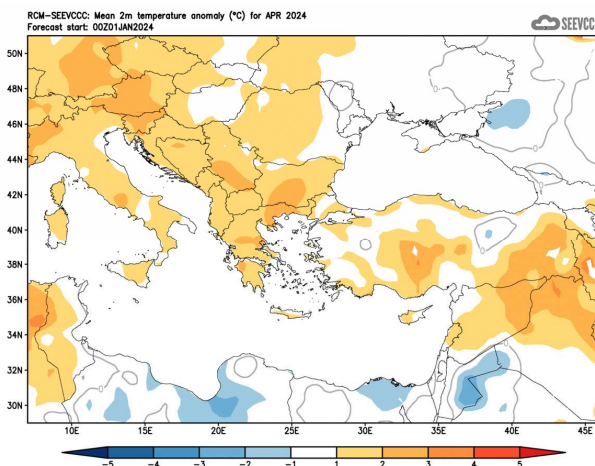
The seasonal forecast for **March** is almost similar to the one of the previous month suggesting that **March** will be warmer than normal by 1°C to 2°C. The accumulated precipitation of **March** is again disappointing since the forecast suggests that in almost all over the island the accumulated precipitation will range below 50% of normal. The above temperature and accumulated precipitation characteristics also apply for the surrounding area (*).



The divergence of the mean monthly temperature (°C) from normal during March

Percentage of the mean monthly precipitation (%) compared with the normal of March

precipitation of **April** is again disappointing since the forecast suggests that all over the island the accumulated precipitation will range below 50% of normal. The above temperature and accumulated precipitation characteristics also apply for the majority of the surrounding area (*).



Divergence of the mean monthly temperature (°C) from normal during April

Percentage of the mean monthly precipitation (%) compared with the normal of April

Normal values of temperature (mean maximum and mean minimum) and accumulated precipitation for February, March and April

The normal values of the mean maximum, the mean minimum temperature and the accumulated precipitation are presented below for sample stations, concerning the three months the period of forecast is covering, in order to gain a better view of the normal seasonal climate. The temperatures, both the maximum and the minimum, of **February** are the lowest climatological temperatures of the period while **February's** accumulated precipitation has the greater value of the period, as a result of the increased frequency of reoccurrence/redeveloping of depressions over the area of East Mediterranean. During **March**, a transitional month from winter to summer, an increase of the mean maximum and the mean minimum temperature is noted with a simultaneous drop of the accumulated precipitation over all sample stations. A further temperature increase and accumulated precipitation significant decline is observed during **April**.

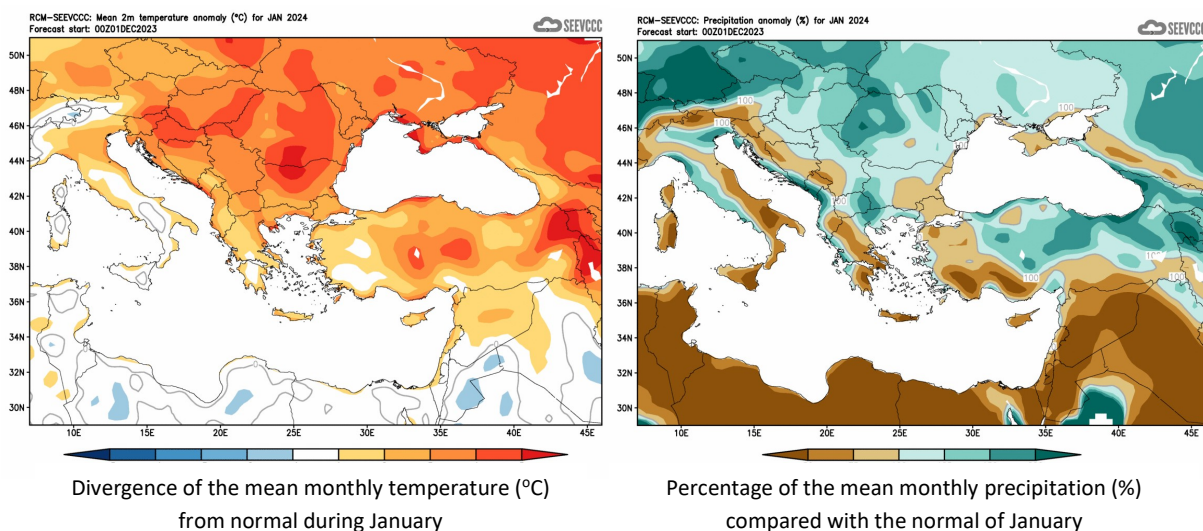
TEMPERATURE AND PRECIPITATION NORMAL VALUES FOR THE PERIOD 1981-2010									
Area Name	MEAN DAILY MAXIMUM TEMPERATURE (°C)			MEAN DAILY MINIMUM TEMPERATURE (°C)			MEAN MONTHLY TOTAL PRECIPITATION (mm)		
	Feb	Mar	Apr	Feb	Mar	Apr	Feb	Mar	Apr
NORTH COAST	16.3	18.3	21.6	7.3	8.3	10.8	68.5	45.7	21.8
WEST COAST*	17.1	18.6	21.5	8.1	8.9	11.5	59.8	34.4	15.2
MOUNTAINOUS AREAS	6.7	10.4	15.5	0.5	2.8	6.6	128.7	92.1	47.2
INLAND*	16.0	19.2	24.4	5.3	6.9	10.4	44.5	31.9	19.1
SOUTH COAST	17.0	19.3	22.7	7.1	8.6	11.8	50.3	35.8	14.2
EAST COAST**	16.5	19.1	23.2	6.3	7.8	10.9	50.7	35.2	19.7

* West Coast and Inland Values cover the period 1983-2010

** East Coast Temperature Values cover the period 1981-2007

Evaluation of January's seasonal forecast for the area of Cyprus

The seasonal forecast for **January** suggested that temperature would be above normal, by 1°C to 2°C. The accumulated precipitation of **January** was to be again disappointing, since the forecast suggested a mainly dry month with accumulation ranging between 50% to 75% of normal. Low accumulations were characterizing all the surrounding area, as well.



From the provisional data recorded by the Department of Meteorology, for the selected portion of the meteorological stations, which are presented in the table below, it seems that the model performed relatively well in relation to the expected temperatures, since January was indeed warmer than normal. However, the seasonal model did not correctly estimate how much warmer this month would be. The estimate was for 1°C to 2°C warmer than normal, however January was, in the majority of stations, by 2°C to 3.3°C warmer than normal, both in relation to the average daily maximum temperature and also in relation to the average daily minimum temperature.

TEMPERATURE AND PRECIPITATION PROVISIONAL DATA FOR JANUARY 2024

St. No.	Station Name	Mean Daily Maximum Temperature (°C)	Normal Value (1981-2010)	Difference from Normal Value	Highest Daily Maximum Temperature (°C)	Lowest Daily Maximum Temperature (°C)	Mean Daily Minimum Temperature (°C)	Normal Value (1981-2010)	Difference from Normal Value	Lowest Daily Minimum Temperature (°C)	Highest Daily Minimum Temperature (°C)	Monthly Total Precipitation (mm)	Normal Value (1981-2010)	Difference from Normal Value
41	POLIS CHRYSOCHOUS	19.6	16.3	3.3	23.8	15.3	10.8	7.6	3.2	5.0	14.5	79.1	85.3	-6.2
82*	PAFOS (AIRPORT)	18.9	17.1	1.8	22.2	14.2	11.4	8.3	3.1	5.7	17.1	82.5	78.8	3.7
225	PRODROMOS (C.F.C.)	7.5	6.3	1.2	12.7	0.4	2.4	0.7	1.7	-2.4	7.6	154.1	150.0	4.1
666*	ATHALASSA (RADIOSONDE)	18.2	15.5	2.7	22.1	11.9	7.4	5.4	2.0	3.0	12.4	92.5	48.8	43.7
731	LARNAKA (AIRPORT)	19.5	16.8	2.7	24.0	14.3	10.3	7.5	2.8	5.8	14.5	86.6	73.7	12.9
800**	ACHNA (DASAKI)	19.0	16.3	2.7	23.6	13.1	9.0	6.6	2.4	5.1	12.7	78.3	67.3	11.0

* Pafos' and Athalassa's Station Normal Values cover the period 1983-2010

** Achna's Temperature Normal Values cover the period 1981-2007

☰ dew

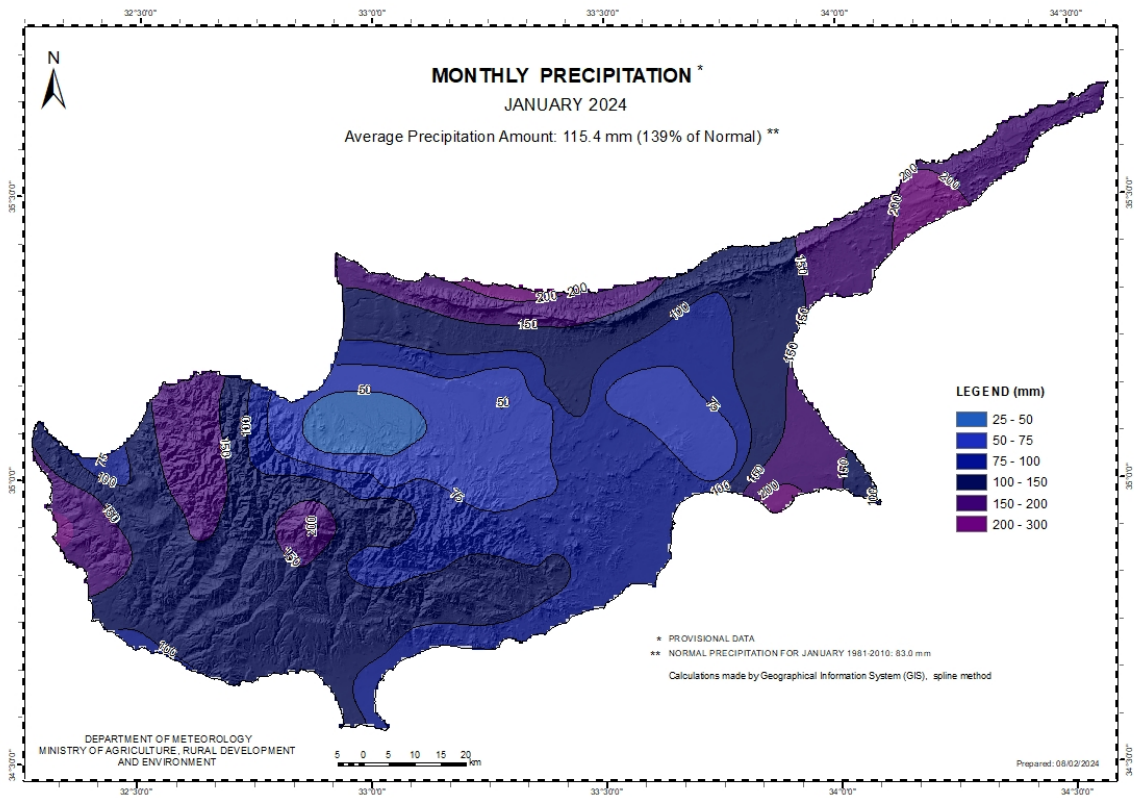
Extreme high temperatures were also recorded, with positive departures greater than 4°C, as at Polis Chrysochou station where the highest maximum daily temperature of 23.8°C was by 7.5°C higher than normal. Also, the highest maximum daily temperature at Achna station (23.6°C) was by 7.3°C higher than normal. Extreme minimum temperatures with positive departure greater than 4°C were also recorded. For example, at Paphos airport station the highest daily minimum temperature (17.1°C) was by 8.8°C higher than normal, while at Athalassa's and Larnaka's airport stations this was by 7°C higher than the corresponding normal one.

From the provisional data recorded by the Department of Meteorology the model did not perform well over the amount of the accumulated precipitation, as the actual accumulated precipitation was more than the expected over the entire island.

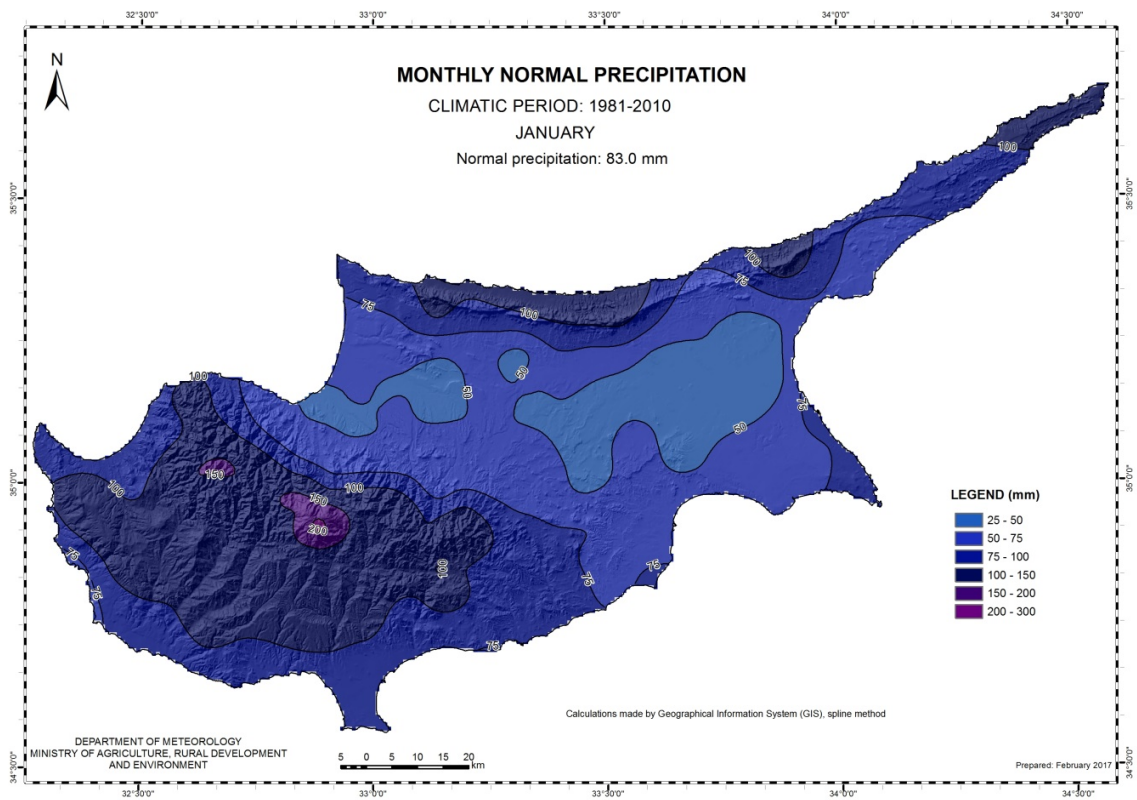
During the periods 1-5, 8-19 and 21-31 of **January** local showers and thunderstorms resulted in accumulated precipitation of 115.4mm or 139% of normal. It is worth mentioning that on the 10th, the 26th and the 28th of **January** hail was reported. Also, for the 10th and the 22nd of **January**, EMMA yellow level warnings for thunderstorms were issued, while on the 12th of January EMMA yellow level warning was issued for rainfall. On the 29th of January, EMMA orange level warning for thunderstorms was issued, as well.

It is worth mentioning that based on the provisional snowfall was reported for the periods 10, 12-15, 25-26 and 28-31 of **January**.

For the purpose of better visualization of **January** accumulated precipitation, a chart of Cyprus with the total preliminary accumulated precipitation is presented.



A Cyprus chart with the normal (period 1981 to 2010) accumulated precipitation for the month of **January** is also presented.



(*) It is stated that due to the failure of the seasonal model to correctly forecast the expected precipitation (sometimes) the seasonal forecast for precipitation is given with a reserve.