

Seasonal weather forecast for the months of

March, April and May 2022

General overview of the weather expected to prevail for March, April and May.

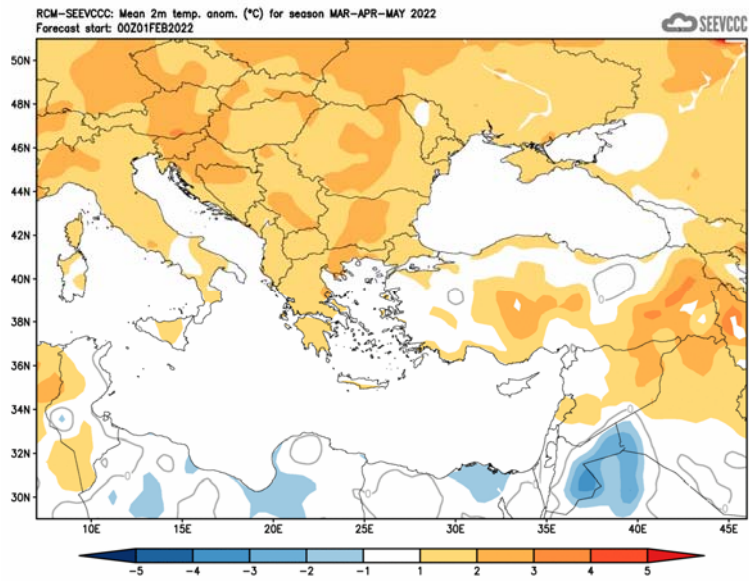
The weather for the following three months, namely **March, April and May 2022**, will be presented, with respect to the anomalies of temperature, and accumulated precipitation. Normal temperatures (both maximum and minimum), after noting their lower annual values during **February** (relevant data not presented), will start rising during **March**, followed by a further significant rise in **April and May**. Nevertheless, cold outbreaks, even not frequent, are not rare during **March**. The accumulated precipitation starts declining, since barometric systems resulting in from dynamic causes, are not frequent during **March, April and May**.

The period of the following three months (**March, April and May**) is likely to be characterized as a series of unstable months, with outbreaks of thunderstorms, initiated either from dynamic or mainly thermal causes (with varying weight). Also, the period is characterized by dust incidents, which sometimes are severe.

Seasonal forecast for the next three months

Specifically, regarding the seasonal forecast for the period **March, April and May 2022**, the temperature will be generally normal (normal to slightly above normal temperature characterizes the greater part of the continental area surrounding eastern Mediterranean).

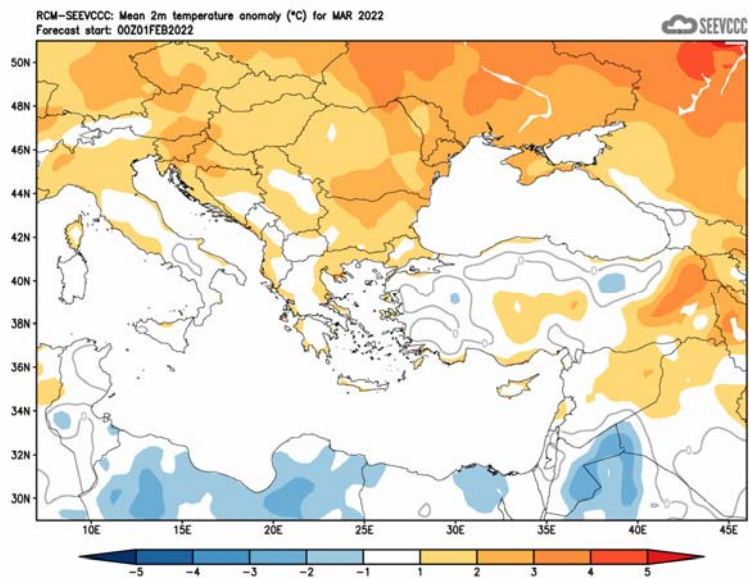
The report of the seasonal forecast for the accumulated precipitation will not be commented on, as there were frequent failures in the forecast.



I Divergence of temperature from normal from the mean seasonal temperature (°C) for March, April, and May

March

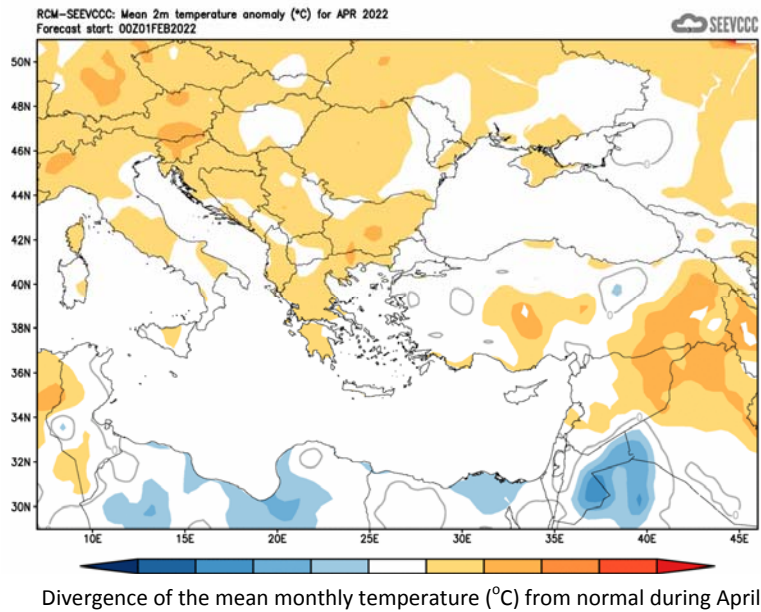
The seasonal forecast suggests that **March's** temperature will be normal, except in the coastal areas that it seems that it will be slightly above normal.



Divergence of the mean monthly temperature (°C) from normal during March

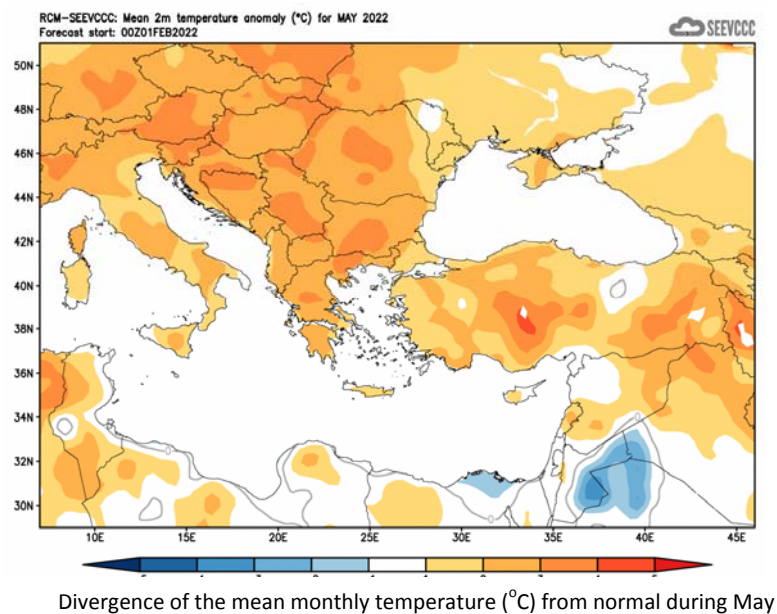
April

The seasonal forecast suggests that **April's** temperature will be generally normal as this characterizes a great part of the surrounding area.



May

The seasonal forecast suggests that **May's** temperature will be normal over the east part of the island, whereas over the west part of the island it will be above normal. Above normal temperature characterizes the greater part of the continental area surrounding eastern Mediterranean.



Normal values of temperature and accumulated precipitation for March, April and May

The normal values of mean maximum, mean minimum temperature, and accumulated precipitation are presented below concerning the three months the period of forecast is covering, in order to gain a better view of the normal seasonal climate. The period of forecast is the transitional period in which the atmosphere switches from its winter pattern to the summer one. The temperature, both maximum and minimum, is on the rise with May's temperature significantly higher than March temperature.

On the other hand, the accumulated precipitation is declining, as presented by the climatological data shown on the table below. During **March**, the accumulated precipitation notes a significant decline (if compared to **February** (not presented) which suggests that the frequency of the approaching barometric lows declines. A further decline of the accumulated precipitation is observed in **April** and **May**.

March, April and **May** are climatologically suggested to be unstable months with thundery activity initiated mainly from thermal causes and or dynamical causes. From the table below, also note the effect of the mountainous area of Troodos range over the accumulated precipitation, mainly as a result of thundery activity which is affecting primarily the mountainous ranges of the island. The accumulated precipitation over Prodromos station although declining towards May is always significantly higher, if compared to the accumulated precipitation of the other selected stations.

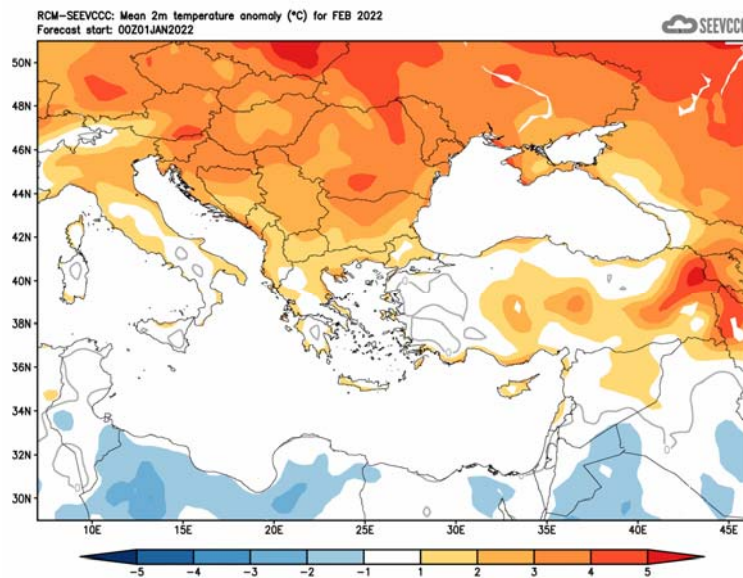
TEMPERATURE AND PRECIPITATION NORMAL VALUES FOR THE PERIOD 1981-2010									
Area Name	MEAN DAILY MAXIMUM TEMPERATURE (°C)			MEAN DAILY MINIMUM TEMPERATURE (°C)			MEAN MONTHLY TOTAL PRECIPITATION (mm)		
	Mar	Apr	May	Mar	Apr	May	Mar	Apr	May
NORTH COAST	18.3	21.6	25.8	8.3	10.8	14.3	45.7	21.8	7.6
WEST COAST*	18.6	21.5	24.5	8.9	11.5	14.7	34.4	15.2	6.1
MOUNTAINOUS AREAS	10.4	15.5	20.4	2.8	6.6	10.8	92.1	47.2	32.0
INLAND*	19.2	24.4	29.6	6.9	10.4	14.8	31.9	19.1	24.6
SOUTH COAST	19.3	22.7	26.4	8.6	11.8	15.7	35.8	14.2	9.8
EAST COAST**	19.1	23.2	27.4	7.8	10.9	14.9	35.2	19.7	10.7

* West Coast and Inland Values cover the period 1983-2010

** East Coast Temperature Values cover the period 1981-2007

Evaluation of February's seasonal forecast for the area of Cyprus

The seasonal forecast for **February** suggested that it would be warmer than normal by 1°C to 2°C mainly in coastal areas.



Divergence of the mean monthly temperature (°C) from normal during February

From the provisional data recorded by the Department of Meteorology, for the selected portion of the meteorological stations, which are presented in the table below, it seems that the model performed relatively well. **February** was warmer than normal.

Extreme high temperatures were of course recorded at all the selected meteorological stations, like Prodromos that recorded a highest daily maximum of 14.1°C (with the normal being 6.7°C) and Polis Chrysochous that recorded a highest daily maximum of 22.7°C (with the normal being 16.3°C). Extremes low temperatures (deviating by 4°C or more from normal) were also recorded. As an example, note the highest daily minimum temperatures of Larnaka airport and Pafos that was 16.8°C (with a normal of 7.1°C) and 15.4°C (with a normal of 8.1°C) respectively.

From the distribution (provisional accumulated precipitation chart) of the accumulated precipitation of the month is evident that mainly the mountains received high accumulation score. As regarded from the same chart the mean surface distribution was below normal (reaching only 39.2mm or 57% of normal).

During the periods 1-10, 13-15, 18-20, 22-26 and on the 28th of **February** local showers and thunderstorms were recorded.

Based on the provisional data, hail was recorded on the 3rd and on the 24th of the month, while snow was recorded during the periods 1st, 3-4, 6, 8-9, 18-19 and 24-25 of the month.

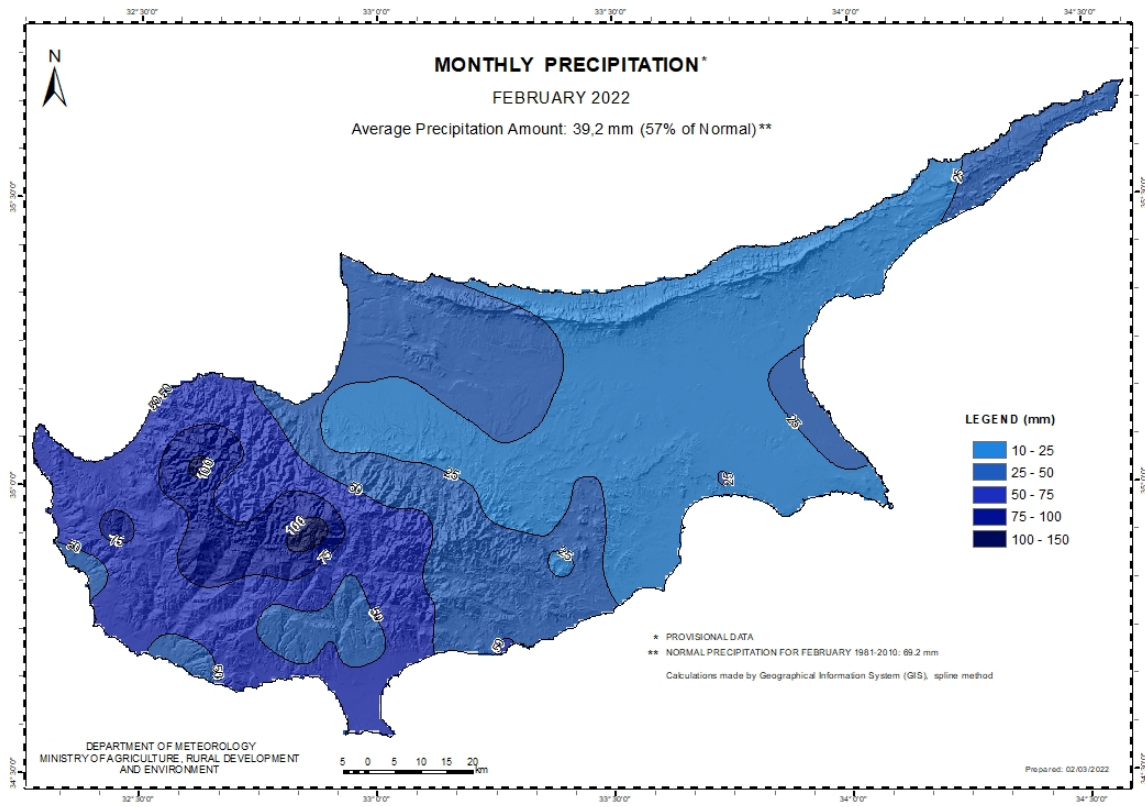
For the dates 3-4 and 8-9 of **February**, yellow EMMA warning was issued concerning showers and thunderstorms.

TEMPERATURE AND PRECIPITATION PROVISIONAL DATA FOR FEBRUARY 2022														
St. No.	Station Name	Mean Daily Maximum Temperature (°C)	Normal Value (1981-2010)	Difference from Normal Value	Highest Daily Maximum Temperature (°C)	Lowest Daily Maximum Temperature (°C)	Mean Daily Minimum Temperature (°C)	Normal Value (1981-2010)	Difference from Normal Value	Lowest Daily Minimum Temperature (°C)	Highest Daily Minimum Temperature (°C)	Monthly Total Precipitation (mm)	Normal Value (1981-2010)	Difference from Normal Value
		41	POLIS CHRYSOCHOUS	19,1	16,3	2,8	22,7	16,8	9,5	7,3	2,2	5,1	13,7	56,5
82*	PAFOS (AIRPORT)	18,1	17,1	1,0	21,9	15,3	9,6	8,1	1,5	6,3	15,4	55,1	59,8	-4,7
225	PRODROMOS (C.F.C.)	8,7	6,7	2,0	14,1	3,2	1,3	0,5	0,8	-2,1	6,8	89,2	128,7	-39,5
666*	ATHALASSA (RADIOSONDE)	18,2	16,0	2,2	21,5	12,0	5,7	5,3	0,4	1,5	11,6	17,6	44,5	-26,9
731	LARNAKA (AIRPORT)	18,4	17,0	1,4	23,2	15,7	8,6	7,1	1,5	3,5	16,8	21,6	50,3	-28,7
800**	ACHNA (DASAKI)	17,2	16,5	0,7	20,3	13,4	6,4	6,3	0,1	1,9	12,1	18,0	50,7	-32,7

* Pafos' and Athalassa's Station Normal Values cover the period 1983-2010
** Achna's Temperature Normal Values cover the period 1981-2007

= VALUES FROM AUTOMATIC WEATHER STATION

For the purpose of better visualization of **February** accumulated precipitation, a chart of Cyprus with the total preliminary accumulated precipitation is presented.



A Cyprus chart with the normal (period 1981 to 2010) accumulated precipitation for the month is also presented.

