

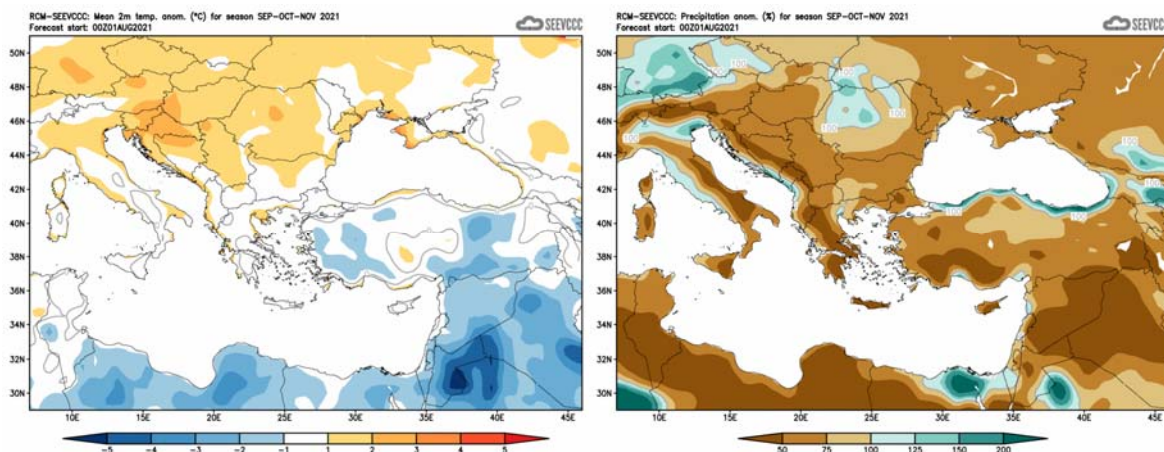
Seasonal weather forecast for the months of September, October, and November 2021

General overview of the weather expected to prevail for September, October, and November.

The weather for the following three months, namely **September, October, and November 2021**, will be presented, with respect to the anomalies of temperature, and accumulated precipitation.

During the period in focus normal temperatures (both maximum and minimum) are declining, suggesting **September** as the hottest month of the period and **November** the period's coldest month. The accumulated precipitation is at its lowest values during September, but it rises well during the period. During September, the seasonal low shrinks eastwards with a further shrinkage during October until dissipation. The first month of the period is likely to be climatologically characterized by outbreaks of thunderstorms, initiated from thermal causes over the main plain area or over the mountainous range from orographic uplift. During **October** and mainly during **November** the frequency of baroclinic depressions affecting the area increases significantly, resulting in higher accumulated precipitation. During **November**, the first snow fall may be noted over the highest peaks of Troodos range, as in the past.

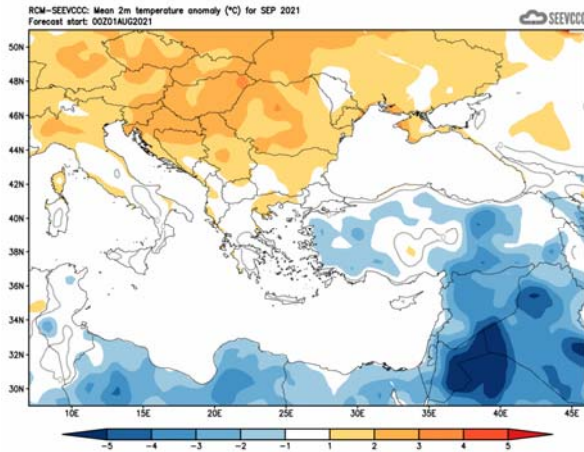
Specifically, regarding the seasonal forecast for the period of **September, October and November 2021**, the temperature will be generally normal. Normal to lower than normal temperature also characterizes the greater part of Asia Minor, the Balkans and Middle East. The amount of the accumulated precipitation over Cyprus is expected to range generally from 50% of normal to 75% of normal, except inland and over the south-eastern part that is expected to range below 50% of normal (*).



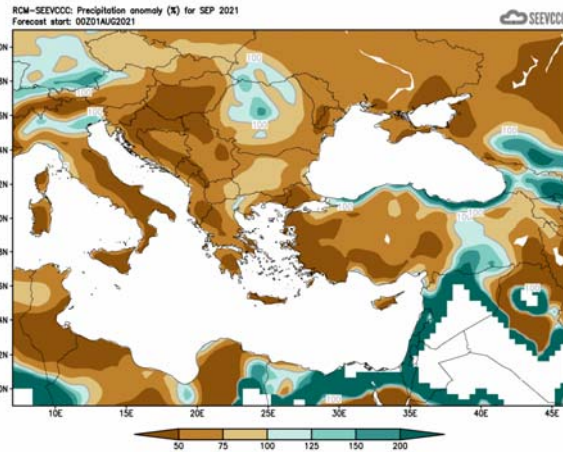
Divergence of temperature from normal from the mean seasonal temperature (°C) for September, October and November

Percentage (%) of the mean seasonal accumulated precipitation compared to the mean normal for September, October and November

The seasonal forecast suggests that **September's** temperature will be generally normal, except inland where the temperature will be normal to slightly below normal, by 1 to 2°C. The lower than normal temperature is also a characteristic of the area of Asia Minor. The amount of the accumulated precipitation will reach 50% of normal over the eastern and southern and over northern part and mountainous areas it will range between 50% and 75% of normal (*).

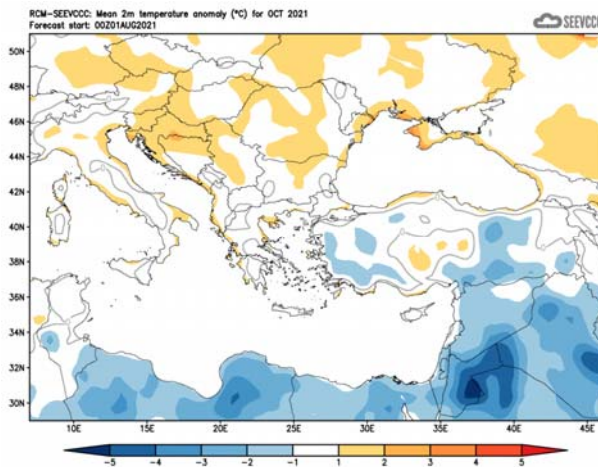


Divergence of the mean monthly temperature (°C) from normal during September

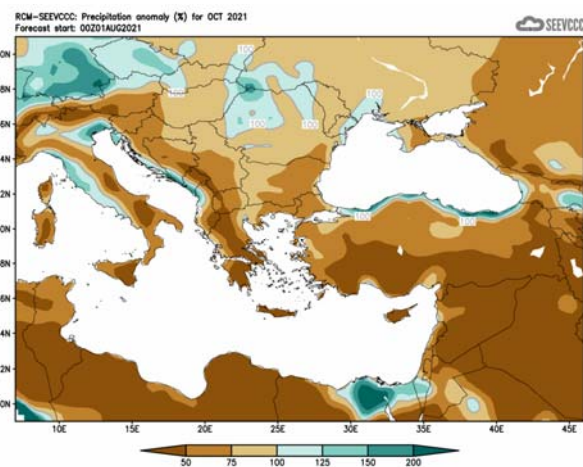


Percentage of the mean monthly precipitation (%) compared with the normal of September

The seasonal forecast for **October** suggests that temperature will be generally normal. The accumulated precipitation of Cyprus will be below 50% of normal all over Cyprus (*).

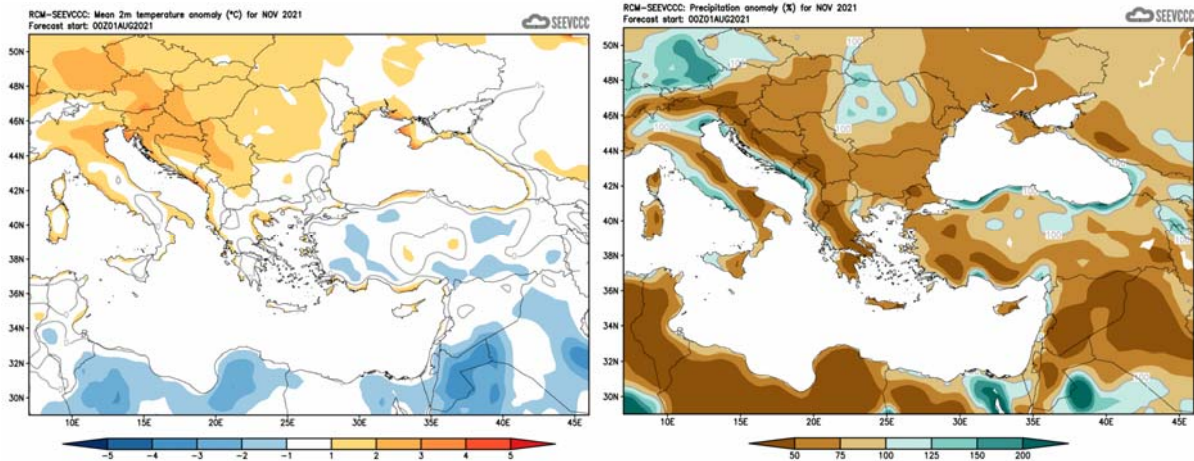


Divergence of the mean monthly temperature (°C) from normal during October



Percentage of the mean monthly precipitation (%) compared with the normal of October

The seasonal forecast for **November** suggests that temperature will be generally normal and locally slightly above normal in coastal areas. The accumulated precipitation of November will range between 50% and 75% of normal all over Cyprus, except over east part that will be below 50% of normal (*).



Divergence of the mean monthly temperature (°C) from normal during November

Percentage of the mean monthly precipitation (%) compared with the normal of November

Normal values of temperature and accumulated precipitation for September, October, and November 2021

The normal values of mean maximum, mean minimum temperature and accumulated precipitation are presented below concerning the three months the period of forecast is covering, in order to gain a better view of the normal seasonal climate. The temperature, both maximum and minimum, is on the fall suggesting **September** as the warmest month of the period and **November** as the coldest. On the other hand, the accumulated precipitation is increasing significantly from **September** towards **November**, as presented by the climatological data shown on the table below. It is worth noting that **October's** and mainly **November's** accumulated precipitation is significantly higher than **September's** because of the reoccurrence/redeveloping of depressions over the area of the east Mediterranean.

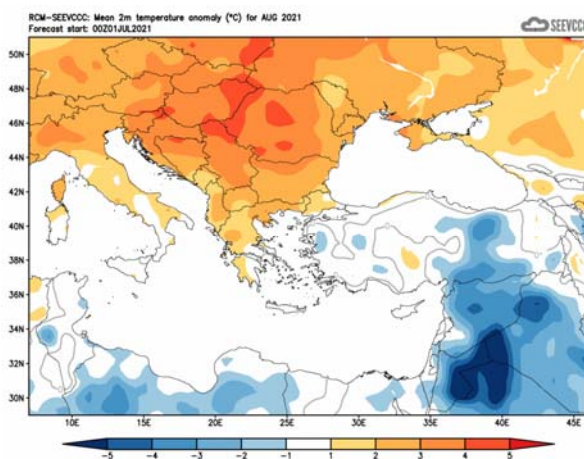
TEMPERATURE AND PRECIPITATION NORMAL VALUES FOR THE PERIOD 1981-2010									
Area Name	MEAN DAILY MAXIMUM TEMPERATURE (°C)			MEAN DAILY MINIMUM TEMPERATURE (°C)			MEAN MONTHLY TOTAL PRECIPITATION (mm)		
	September	October	November	September	October	November	September	October	November
NORTH COAST	30.1	26.4	21.7	19.2	15.1	12.2	4.0	30.3	58.6
WEST COAST*	29.0	26.4	22.4	19.1	15.4	12.9	3.6	27.4	52.6
MOUNTAINOUS AREAS	24.6	19.2	12.8	14.9	10.9	6.1	10.7	34.4	93.8
INLAND*	33.6	28.4	22.1	18.8	15.2	10.4	12.2	20.7	43.2
SOUTH COAST	30.9	27.8	22.6	19.8	15.7	12.4	4.3	16.0	46.8
EAST COAST**	31.9	28.5	22.4	19.6	15.7	11.8	2.9	19.9	44.0

* West Coast and Inland Values cover the period 1983-2010

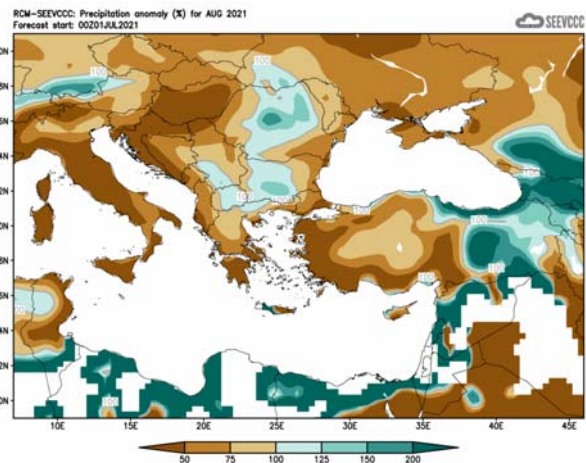
** East Coast Temperature Values cover the period 1981-2007

Evaluation of August's seasonal forecast for the area of Cyprus

August's seasonal forecast suggested that temperature over Cyprus would be generally normal. Normal temperature characterized also Minor Asia, while Middle East would be lower than normal. The amount of the accumulated precipitation inland was expected to be around normal, while over the northern and western part was expected to range above normal and over the southern and eastern part was expected to range below normal.



Divergence of the mean monthly temperature (°C) from normal during August



Percentage of the mean monthly precipitation (%) compared with the normal of August

Concerning the model's evaluation for **August** a general judgment is that the model did not perform well concerning the temperature. Almost all the mean daily maximum and minimum temperatures were above normal. It must be mentioned that during summer months, precipitation is resulted mainly from thundery activity which has very localised characteristics and that a quantitative judgment is very difficult due to model's limitations.

TEMPERATURE AND PRECIPITATION PROVISIONAL DATA FOR AUGUST 2021														
St. No.	Station Name	Mean Daily Maximum Temperature (°C)	Normal Value (1981-2010)	Difference from Normal Value	Highest Daily Maximum Temperature (°C)	Lowest Daily Maximum Temperature (°C)	Mean Daily Minimum Temperature (°C)	Normal Value (1981-2010)	Difference from Normal Value	Lowest Daily Minimum Temperature (°C)	Highest Daily Minimum Temperature (°C)	Monthly Total Precipitation (mm)	Normal Value (1981-2010)	Difference from Normal Value
41	POLIS CHRYSOCHOUS	36,7	33,3	3,4	40,9	32,5	24,2	21,5	2,7	21,3	27,3	0,0	0,0	0,0
82*	PAFOS (AIRPORT)	32,8	30,5	2,3	36,1	30,6	23,7	21,1	2,6	21,3	26,1	0,0	0,0	0,0
225	PRODROMOS (C.F.C.)	31,4	28,0	3,4	36,6	27,3	18,6	18,1	0,5	15,6	22,8	1,4	12,0	-10,6
666*	ATHALASSA (RADIOSONDE)	39,8	36,9	2,9	44,3	36,5	23,3	21,9	1,4	18,7	28,1	0,0	1,8	-1,8
731	LARNAKA (AIRPORT)	35,6	32,9	2,7	39,2	32,3	24,4	22,3	2,1	21,3	28,5	IXNH	0,3	-0,3
800**	ACHNA (DASAKI)	35,6	33,5	2,1	40,1	31,9	23,0	22,0	1,0	18,0	27,2	0,0	0,1	-0,1

* Pafos' and Athalassa's Station Normal Values cover the period 1983-2010
** Achna's Temperature Normal Values cover the period 1981-2007

= VALUES FROM AUTOMATIC WEATHER STATION

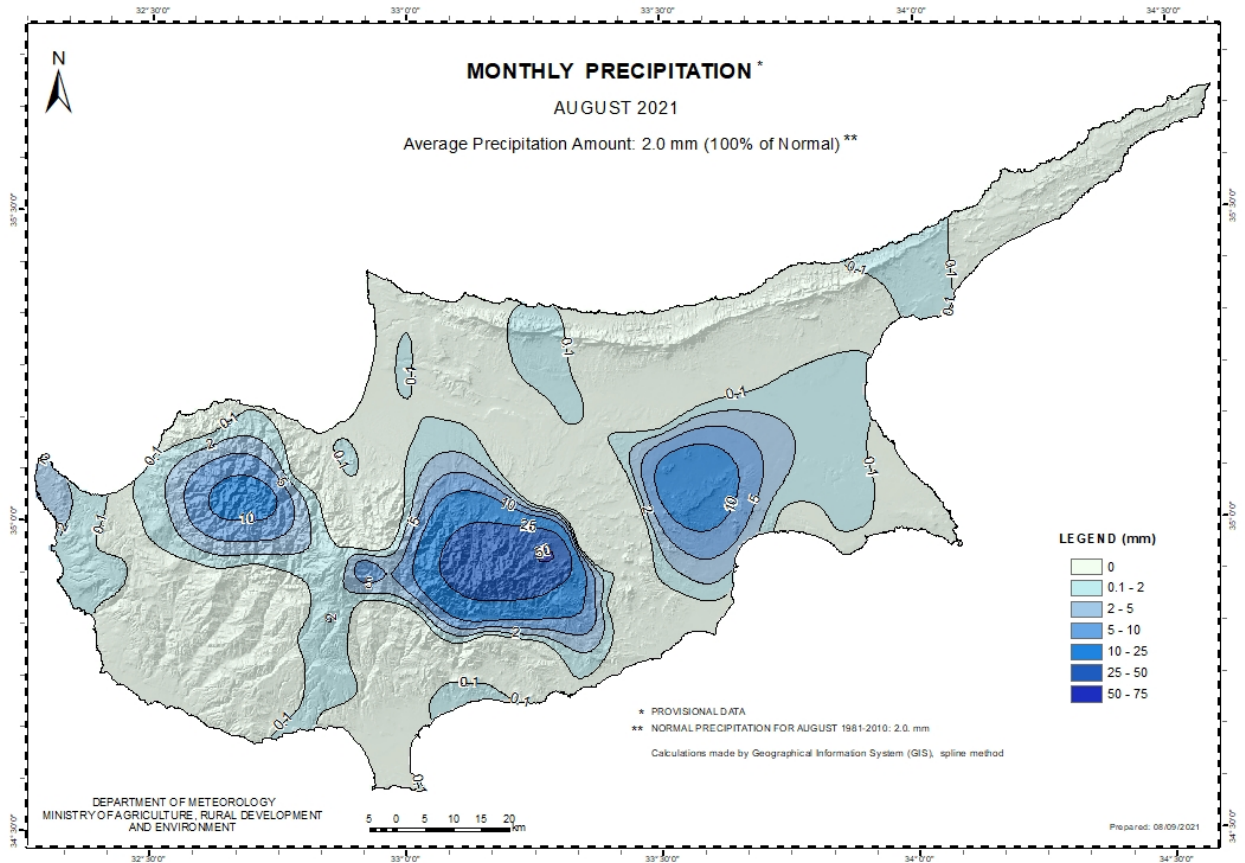
Extremes were recorded with positive departures greater than 4°C, like Polis Chrysochous station where the highest daily maximum temperature (40.9°C) was 7.6°C greater than normal (33.3°C) and Prodromos station, where the highest daily maximum temperature (36.6°C) was 8.6°C greater than normal (28°C).

Extremes were also recorded with positive departures greater than 4°C, like Athalassa station where the highest daily minimum temperature (28.1°C) was 6.2°C greater than normal (21.9°C) and Larnakas station, where the highest daily minimum temperature (28.5°C) was 6.2°C greater than normal (22.3°C).

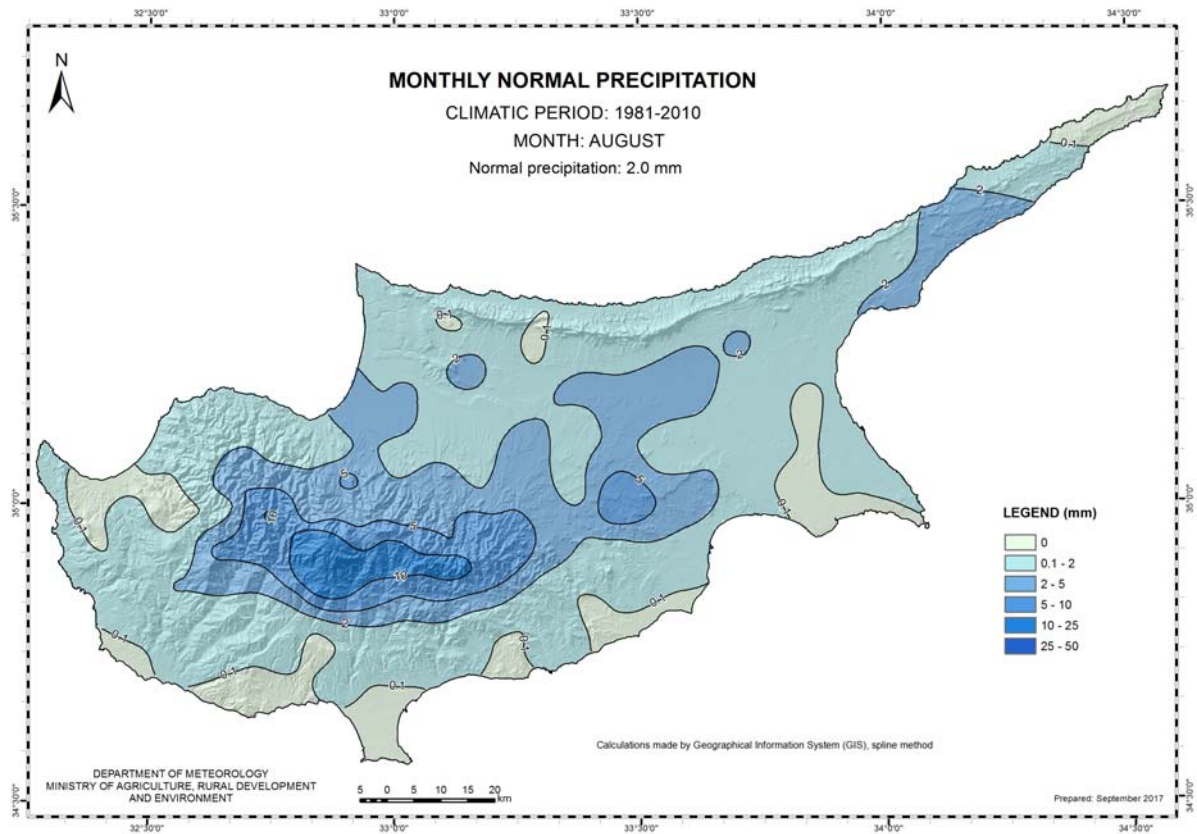
For the period 2-5 of **August** EMMA orange warnings were issued, while for the 6th of August and the periods 11-13, 15-16, 20-22 and 24-28 of **August** yellow warnings were issued. All the above warnings concerned high temperatures, except the warning on the 6th of **August** that concerned thunderstorms.

On the 6th, 12th, 13th and 20th of **August** episodes of local showers and isolated thunderstorms resulted in accumulated precipitation of 2mm (100% of normal). Hail was reported on 6th of **August** at Troodos.

For the purpose of better visualization of **August** accumulated precipitation, a chart of Cyprus with the total preliminary accumulated precipitation is presented.



A Cyprus chart with the normal (period 1981 to 2010) accumulated precipitation for the month of **August** is also presented.



(*) It is stated that due to the uncertainty of the seasonal model to correctly forecast the expected precipitation (sometimes) the seasonal forecast for precipitation is given with a reserve.