

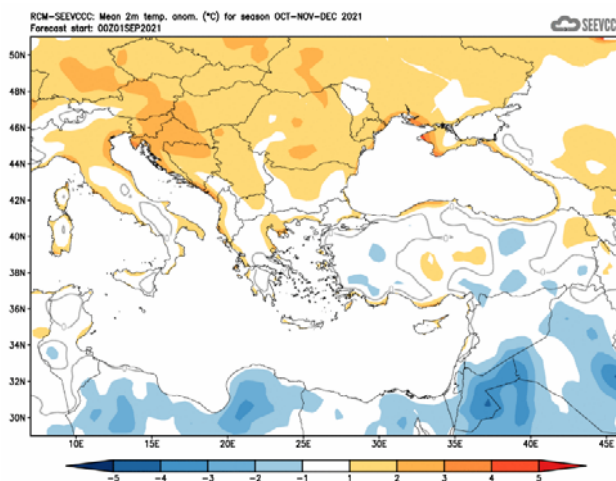
Seasonal weather forecast for the months of October, November and December 2021

General over view of the weather expected to prevail during October, November and December.

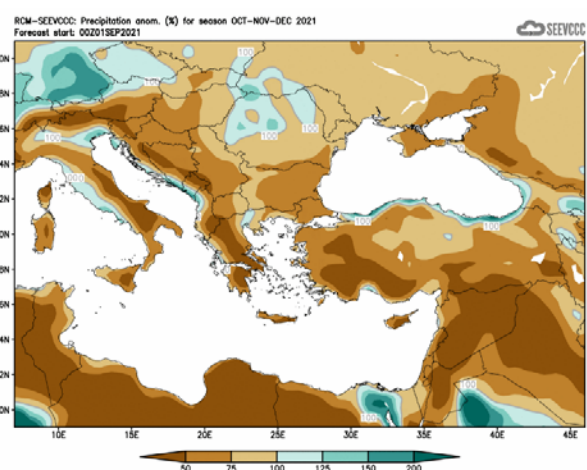
Bearing in mind the limitations the seasonal models are introducing in seasonal forecast, the weather for the following three months, namely **October, November** and **December 2021**, will be presented, with respect to the anomalies of temperature, and accumulated precipitation.

During the period in focus normal temperatures (both maximum and minimum) are significantly declining. The accumulated precipitation is increasing at accumulations almost double the accumulations of the previous month, since during the period the frequency of baroclinic depressions affecting the area is increasing significantly, resulting in higher accumulated precipitation amounts.

Specifically, regarding the seasonal forecast for the period of **October, November** and **December 2021**, the temperature is expected to be normal and slightly, over the coastal areas, higher than normal. Normal temperature characterizes also the greater part of Asia Minor, the Balkans and Near and Middle East. The amount of the accumulated precipitation is expected to range generally from 50% to 75% of normal, except over southeast that is expected to be lower than 50% of normal. As it is generally viewed from the charts the coastal zone of the wider area will experience some higher than normal rainfall accumulations (*).



Divergence of temperature from normal from the mean seasonal temperature ($^{\circ}\text{C}$) for October, November and December

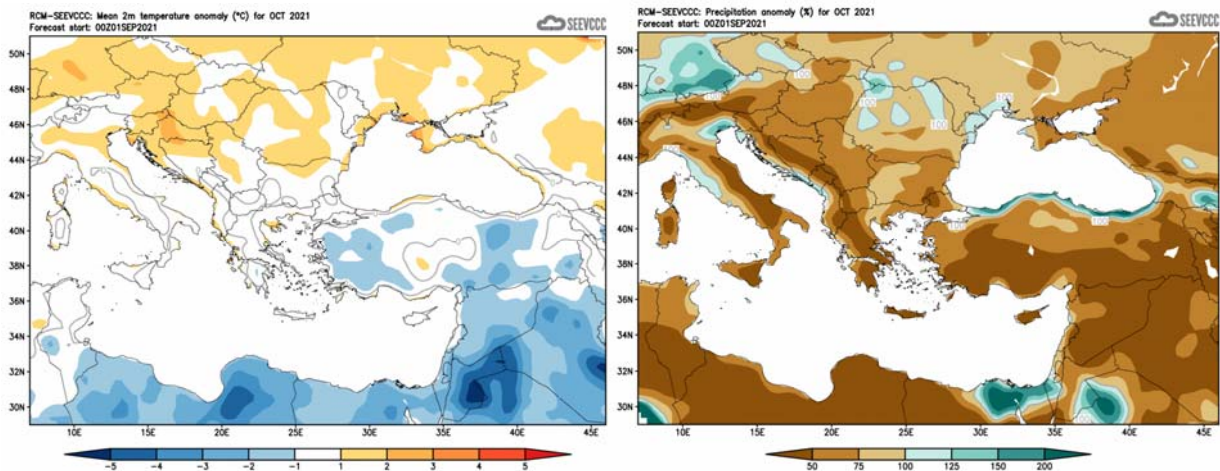


Percentage (%) of the mean seasonal accumulated precipitation compared to the mean normal for October, November and December

The seasonal monthly forecast in detail

Seasonal forecast in detail

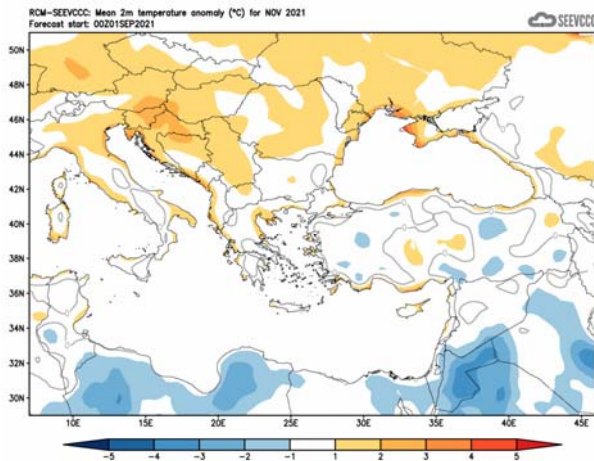
The seasonal forecast suggests that **October's** temperature will be generally normal, just like the greater area. Regarding the accumulated precipitation, almost entire island will be below 50% of normal. The coastal surrounding zone of the eastern Mediterranean is expected to have similar conditions except north Egypt and south Israel (*).



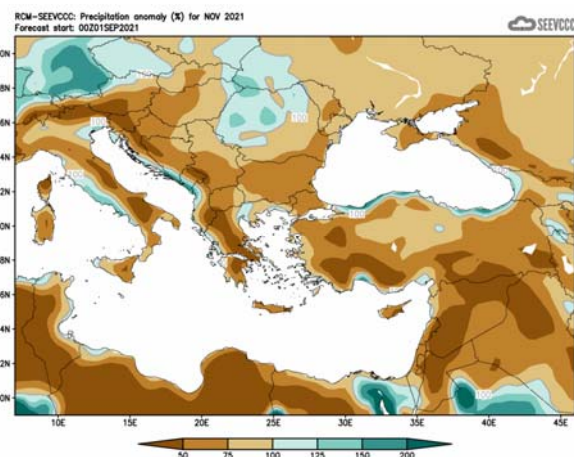
Divergence of the mean monthly temperature (°C)
from normal during October

Percentage of the mean monthly precipitation (%)
compared with the normal of October

The seasonal forecast for **November** suggests that temperature will be generally normal, except the temperature over the coastal areas where it will be slightly higher than normal. The accumulated precipitation for Cyprus will range generally between 50% and 75% of normal, except at the north and west part that it will range between 75% and 100% and at the southeast that is expected to be lower than 50% of normal. Isolated coastal areas of the surroundings will experience some higher than normal rainfall accumulations (*).

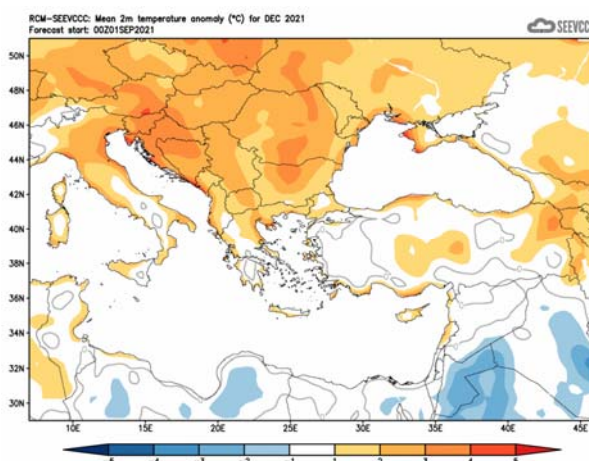


Divergence of the mean monthly temperature (°C) from normal during November

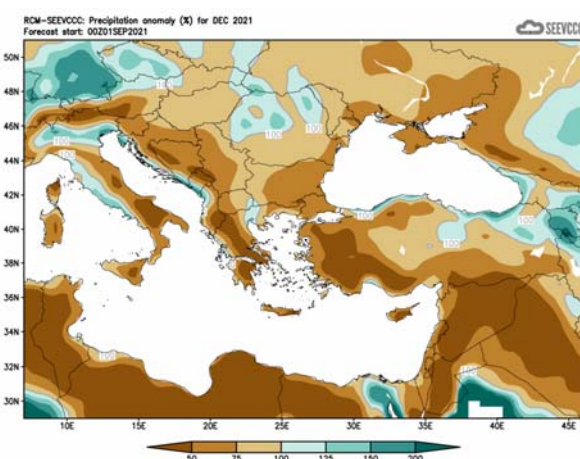


Percentage of the mean monthly precipitation (%) compared with the normal of November

The seasonal forecast for **December** suggests that temperature will be generally normal, except the coastal areas that will be above normal. The accumulated precipitation for Cyprus will range between 50% and 75% of normal, except over southeast part that will range between below 50%. Some isolated coastal areas of the surrounding zone will experience some higher than normal rainfall accumulations (*).



Divergence of the mean monthly temperature (°C) from normal during December



Percentage of the mean monthly precipitation (%) compared with the normal of December

Normal values of temperature (mean maximum and mean minimum) and accumulated precipitation for October, November and December 2021

The normal values of mean maximum, mean minimum temperature and accumulated precipitation are presented below concerning the three months the period of forecast is covering, in order to gain a better view of the normal seasonal climate. The temperature, both maximum and minimum, is on the fall suggesting **December** as the coldest month of the period. On the other hand the accumulated precipitation is increasing significantly towards **December**, as presented by the climatological data shown on the table below. It is worth noting that the score of the accumulated precipitation is almost double every next month for each station if compared to the score of the previous month, and this as a result of the reoccurrence/redeveloping of depressions over the area of the east Mediterranean.

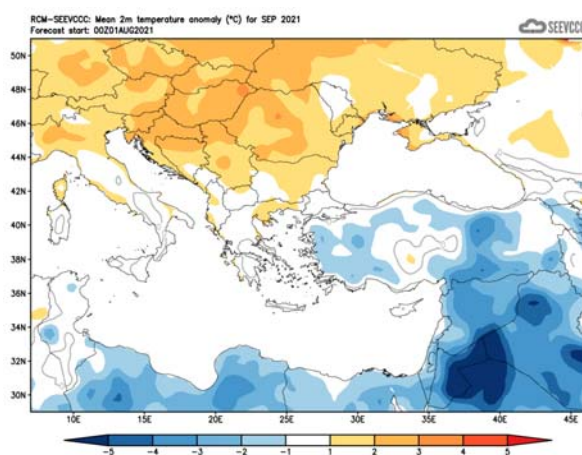
TEMPERATURE AND PRECIPITATION NORMAL VALUES FOR THE PERIOD 1981-2010									
Area Name	MEAN DAILY MAXIMUM TEMPERATURE (°C)			MEAN DAILY MINIMUM TEMPERATURE (°C)			MEAN MONTHLY TOTAL PRECIPITATION (mm)		
	October	November	December	October	November	December	October	November	December
NORTH COAST	26.4	21.7	18.0	16.1	12.2	9.3	30.3	58.6	93.6
WEST COAST*	26.4	22.4	18.9	16.4	12.9	10.0	27.4	52.6	90.1
MOUNTAINOUS AREAS	19.2	12.8	8.3	10.9	6.1	2.6	34.4	93.8	157.3
INLAND*	28.4	22.1	17.3	15.2	10.4	7.0	20.7	43.2	57.2
SOUTH COAST	27.8	22.6	18.6	16.7	12.4	9.2	16.0	46.8	79.0
EAST COAST**	28.5	22.4	18.0	16.7	11.8	8.3	19.9	44.0	76.8

* West Coast and Inland Values cover the period 1983-2010

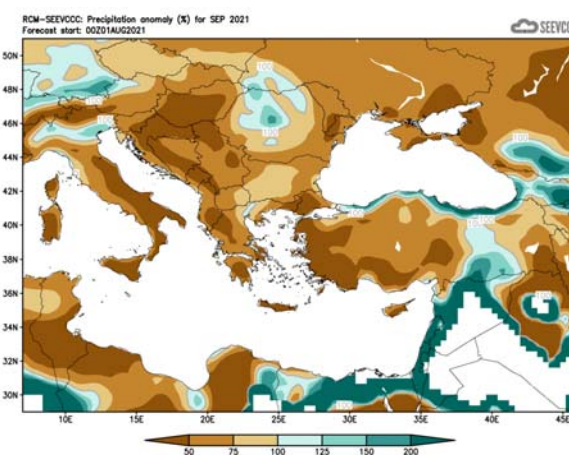
** East Coast Temperature Values cover the period 1981-2007

Evaluation of Septembers seasonal forecast for the area of Cyprus

The seasonal forecast suggested that **September's** temperature would be generally normal, except inland where the temperature would be normal to slightly below normal, by 1 to 2°C. The lower than normal temperature was also a characteristic of the area of Asia Minor. The amount of the accumulated precipitation would reach 50% of normal over the eastern and southern and over northern part and mountainous areas it would range between 50% and 75% of normal.



Divergence of the mean monthly temperature (°C) from normal during September



Percentage of the mean monthly precipitation (%) compared with the normal of September

Concerning the models evaluation for **September** a general judgment is that the model performed relatively well concerning the temperature, but not so well with the amount of accumulated precipitation. Almost all the mean daily maximum and daily minimum temperatures were near normal.

Daily maximum temperatures were recorded with positive departures greater than 4°C, like Prodromos station where the highest daily maximum temperature (30.8°C) was 6.2°C greater than normal (24.6°C) and Polis Chrysochous station, where the highest daily maximum temperature (35.7°C) was 5.6°C greater than normal (30.1°C).

Daily minimum temperatures were recorded with positive departures greater than 4°C, like Pafos station where the highest daily minimum temperature (24.4°C) was 5.3°C greater than normal (19.1°C) and Achna's station, where the highest daily minimum temperature (24.2°C) was 4.6°C greater than normal (19.6°C).

During **September** a thunderstorm EMMA warning was issued with yellow awareness level, on 16th of **September**.

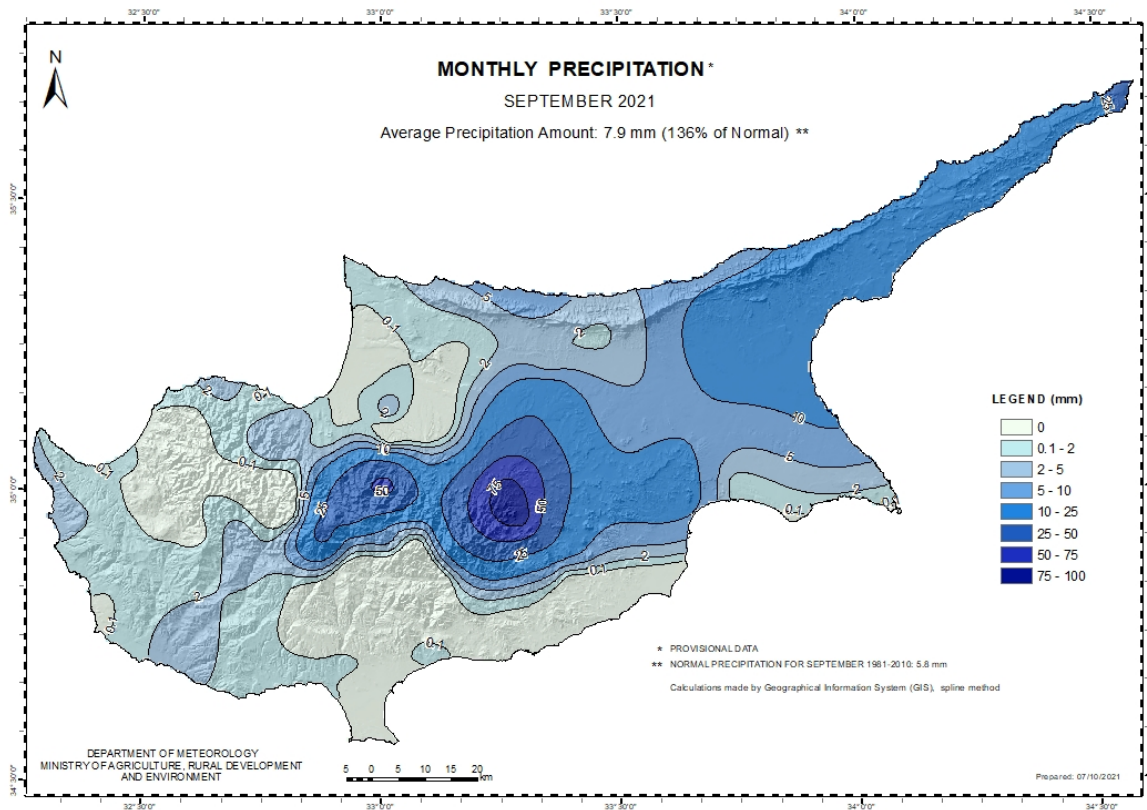
From the provisional data recorded by the Department of Meteorology during the periods 14-16, 22-23 and 29-30 **September** episodes of showers and isolated thunderstorms resulted in accumulated precipitation of 136% of normal only.

TEMPERATURE AND PRECIPITATION PROVISIONAL DATA FOR SEPTEMBER 2021														
St. No.	Station Name	Mean Daily Maximum Temperature (°C)	Normal Value (1981-2010)	Difference from Normal Value	Highest Daily Maximum Temperature (°C)	Lowest Daily Maximum Temperature (°C)	Mean Daily Minimum Temperature (°C)	Normal Value (1981-2010)	Difference from Normal Value	Lowest Daily Minimum Temperature (°C)	Highest Daily Minimum Temperature (°C)	Monthly Total Precipitation (mm)	Normal Value (1981-2010)	Difference from Normal Value
41	POLIS CHRYSOCHOUS	31,7	30,1	1,6	35,7	27,9	21,0	19,2	1,8	17,5	23,6	0,2	4,0	-3,8
82*	PAFOS (AIRPORT)	30,0	29,0	1,0	32,0	27,6	21,2	19,1	2,1	18,5	24,4	1,1	3,6	-2,5
225	PRODROMOS (C.F.C.)	26,3	24,6	1,7	30,8	19,0	13,8	14,9	-1,1	8,6	18,2	3,7	10,7	-7,0
666*	ATHALASSA (RADIOSONDE)	34,2	33,6	0,6	37,9	28,2	19,0	18,8	0,2	16,2	23,0	12,1	12,2	-0,1
731	LARNAKA (AIRPORT)	31,9	30,9	1,0	35,4	29,2	21,3	19,8	1,5	18,3	24,3	Traces	4,3	-4,3
800**	ACHNA (DASAKI)	31,4	31,9	-0,5	35,7	28,0	19,4	19,6	-0,2	15,4	24,2	2,0	2,9	-0,9

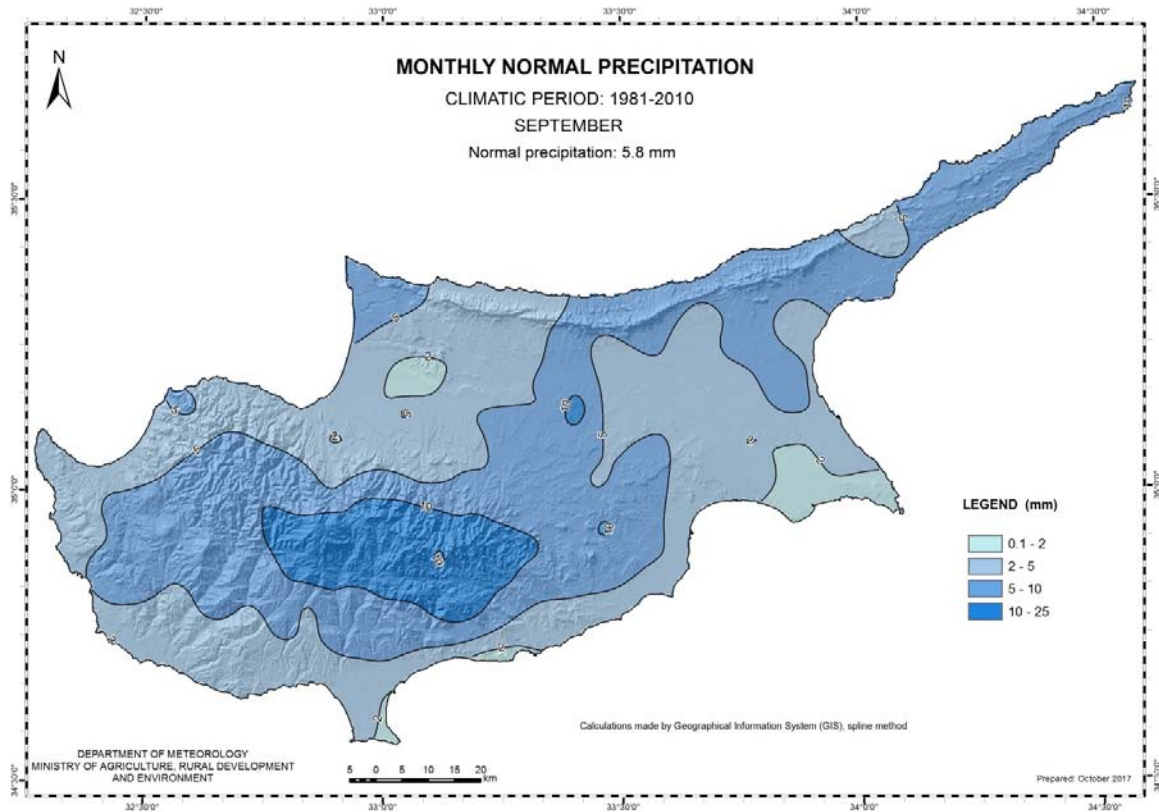
* Pafos' and Athalassa's Station Normal Values cover the period 1983-2010
** Achna's Temperature Normal Values cover the period 1981-2007

= VALUES FROM AUTOMATIC WEATHER STATION

For the purpose of better visualization of **September** accumulated precipitation, a chart of Cyprus with the total preliminary accumulated precipitation is presented.



A Cyprus chart with the normal (period 1981 to 2010) accumulated precipitation for the month of **September** is also presented.



(*) It is stated that due to the uncertainty of the seasonal model to correctly forecast the expected precipitation (sometimes) the seasonal forecast for precipitation is given with a reserve.