

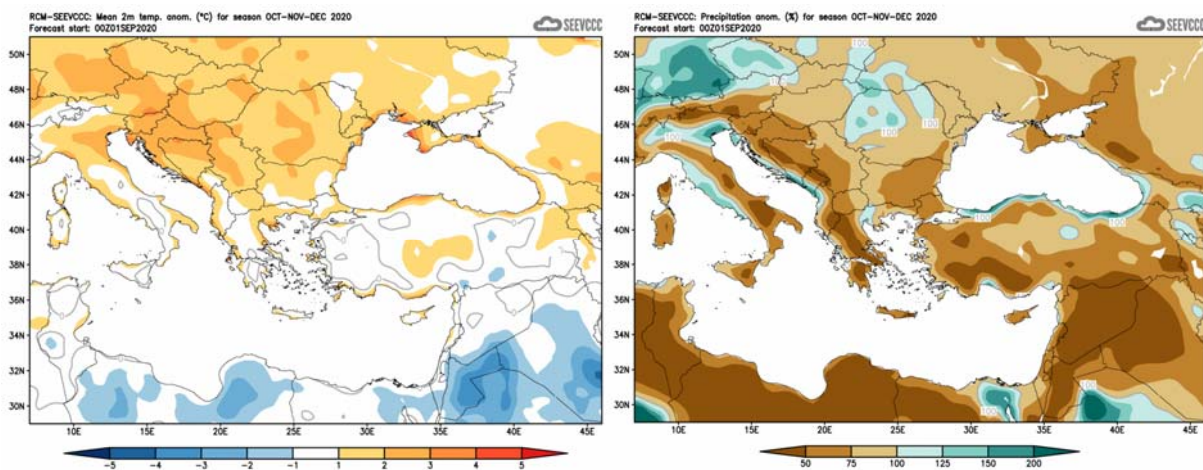
## Seasonal weather forecast for the months of October, November and December 2020

### General over view of the weather expected to prevail during October, November and December.

Bearing in mind the limitations the seasonal models are introducing in seasonal forecast, the weather for the following three months, namely **October, November** and **December 2020**, will be presented, with respect to the anomalies of temperature, and accumulated precipitation.

During the period in focus normal temperatures (both maximum and minimum) are significantly declining. The accumulated precipitation is increasing at accumulations almost double the accumulations of the previous month, since during the period the frequency of baroclinic depressions affecting the area is increasing significantly, resulting in higher accumulated precipitation amounts.

Specifically, regarding the seasonal forecast for the period of **October, November** and **December 2020**, the temperature is expected to be normal and slightly, over the coastal areas, higher than normal. Normal temperature characterizes also the greater part of Asia Minor, the Balkans and Near and Middle East. The amount of the accumulated precipitation is expected to range generally from 50% to 75% of normal. As it is generally viewed from the charts the coastal zone of the wider area will experience some higher than normal rainfall accumulations.



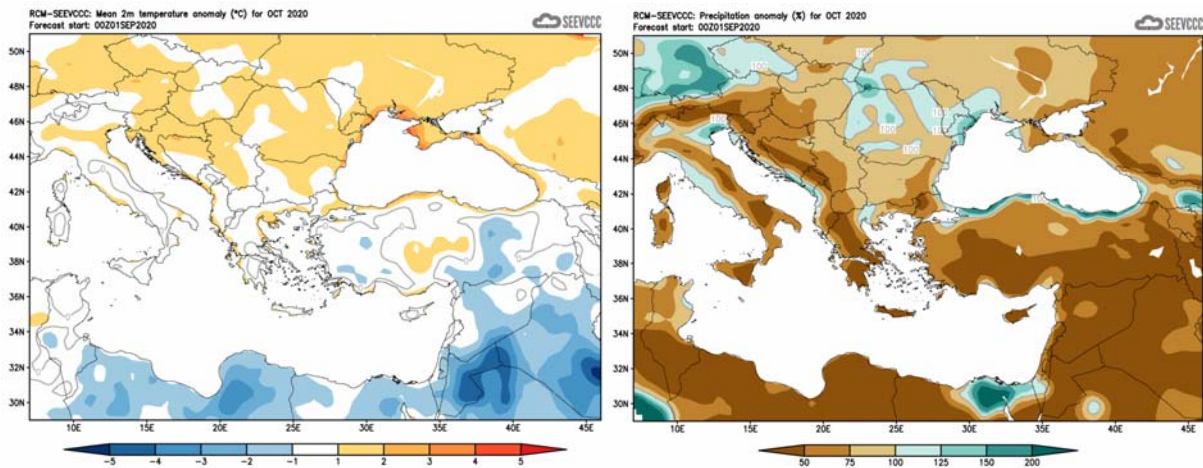
Divergence of temperature from normal from the mean seasonal temperature (°C) for October, November and December

Percentage (%) of the mean seasonal accumulated precipitation compared to the mean normal for October, November and December

## The seasonal monthly forecast in detail

### Seasonal forecast in detail

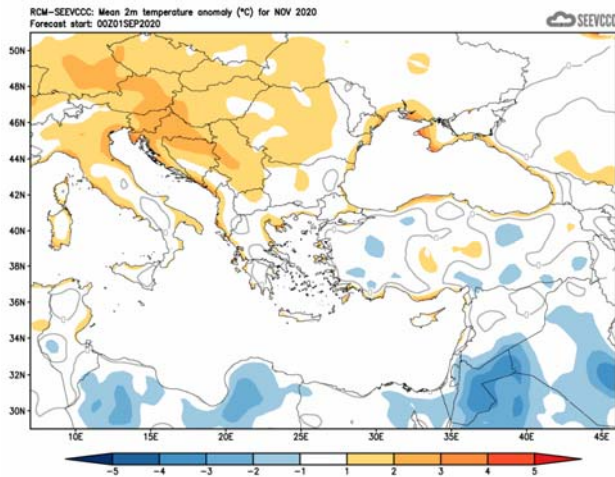
The seasonal forecast suggests that **October's** temperature will be generally normal, although during the first days of October were noted some very high temperatures, just like the greater area. Regarding the accumulated precipitation, almost entire island will be below 50% of normal. The coastal surrounding zone of the eastern Mediterranean is expected to have similar conditions except north Egypt and south Israel.



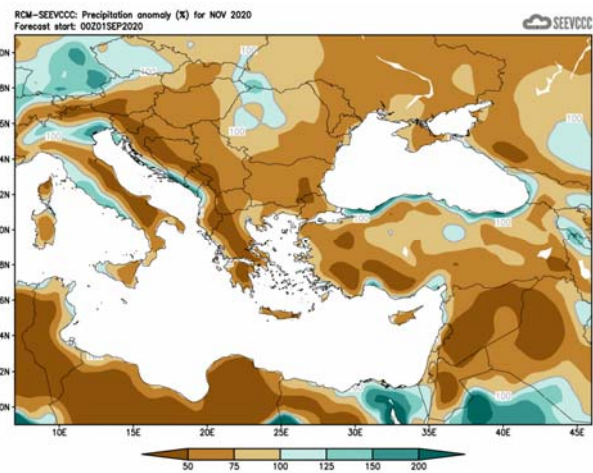
Divergence of the mean monthly temperature (°C)  
from normal during October

Percentage of the mean monthly precipitation (%)  
compared with the normal of October

The seasonal forecast for **November** suggests that temperature will be generally normal, except the temperature over the coastal areas where it will be slightly higher than normal. The accumulated precipitation for Cyprus will range generally between 50% and 75% of normal, except at the north and west part that it will range between 75% and 100%. Isolated coastal areas of the surroundings will experience some higher than normal rainfall accumulations.

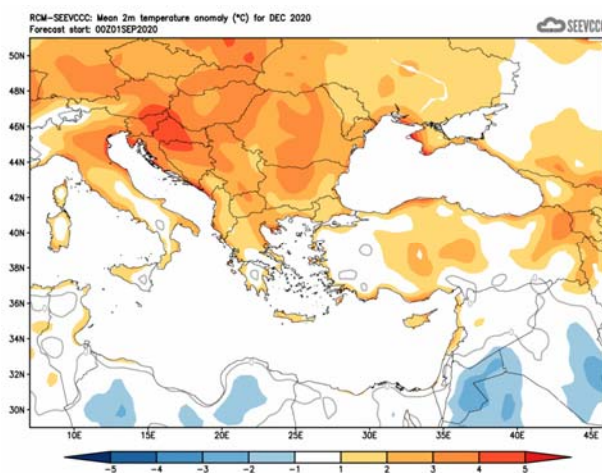


Divergence of the mean monthly temperature (°C) from normal during November

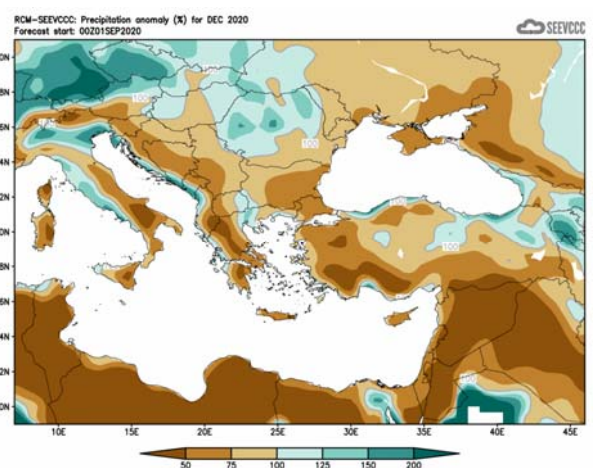


Percentage of the mean monthly precipitation (%) compared with the normal of November

The seasonal forecast for **December** suggests that temperature will be generally above normal. The accumulated precipitation for Cyprus will range between 50% and 75% of normal, except over north and west part that will range between 75% and 100%. Some isolated coastal areas of the surrounding zone will experience some higher than normal rainfall accumulations.



Divergence of the mean monthly temperature (°C) from normal during December



Percentage of the mean monthly precipitation (%) compared with the normal of December



## Normal values of temperature (mean maximum and mean minimum) and accumulated precipitation for October, November and December 2020

The normal values of mean maximum, mean minimum temperature and accumulated precipitation are presented below concerning the three months the period of forecast is covering, in order to gain a better view of the normal seasonal climate. The temperature, both maximum and minimum, is on the fall suggesting **December** as the coldest month of the period. On the other hand the accumulated precipitation is increasing significantly towards **December**, as presented by the climatological data shown on the table below. It is worth noting that the score of the accumulated precipitation is almost double every next month for each station if compared to the score of the previous month, and this as a result of the reoccurrence/redeveloping of depressions over the area of the east Mediterranean.

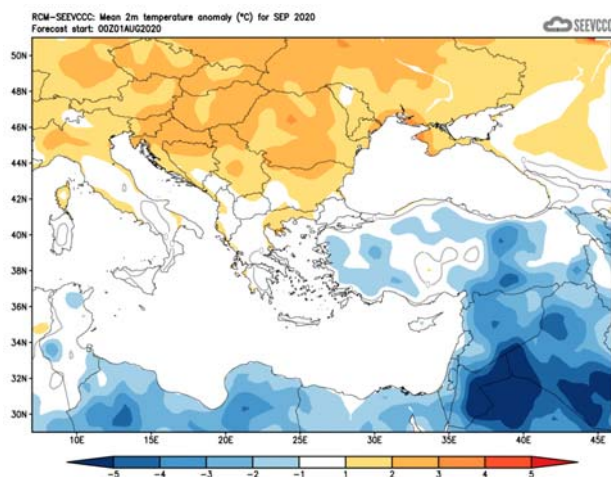
TEMPERATURE AND PRECIPITATION NORMAL VALUES FOR THE PERIOD 1981-2010									
Area Name	MEAN DAILY MAXIMUM TEMPERATURE (°C)			MEAN DAILY MINIMUM TEMPERATURE (°C)			MEAN MONTHLY TOTAL PRECIPITATION (mm)		
	October	November	December	October	November	December	October	November	December
<b>NORTH COAST</b>	26.4	21.7	18.0	16.1	12.2	9.3	30.3	58.6	93.6
<b>WEST COAST*</b>	26.4	22.4	18.9	16.4	12.9	10.0	27.4	52.6	90.1
<b>MOUNTAINOUS AREAS</b>	19.2	12.8	8.3	10.9	6.1	2.6	34.4	93.8	157.3
<b>INLAND*</b>	28.4	22.1	17.3	15.2	10.4	7.0	20.7	43.2	57.2
<b>SOUTH COAST</b>	27.8	22.6	18.6	16.7	12.4	9.2	16.0	46.8	79.0
<b>EAST COAST**</b>	28.5	22.1	18.0	16.7	11.8	8.3	19.9	44.0	76.8

\* West Coast and Inland Values cover the period 1983-2010

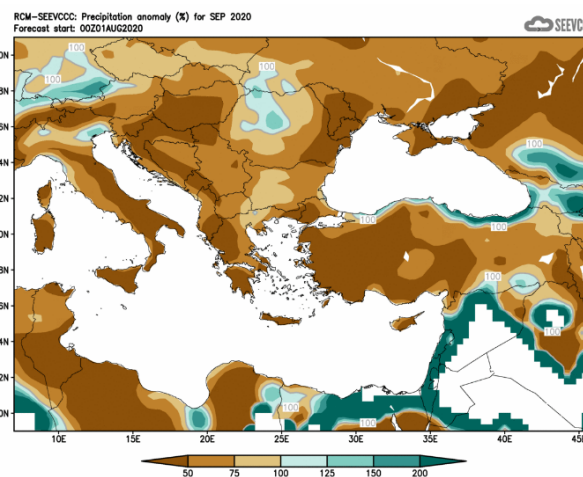
\*\* East Coast Temperature Values cover the period 1981-2007

## Evaluation of Septembers seasonal forecast for the area of Cyprus

The seasonal forecast suggested that **September's** temperature would be generally normal, except inland where the temperature would be normal to slightly below normal, by 1 to 2°C. The lower than normal temperature was also a characteristic of the area of Asia Minor. The amount of the accumulated precipitation would reach 50% of normal over the eastern and southern and over northern part and mountainous areas would range between 50% and 75% of normal.



Divergence of the mean monthly temperature (°C) from normal during September



Percentage of the mean monthly precipitation (%) compared with the normal of September

Concerning the models evaluation for **September** a general judgment is that the model did not perform well at all concerning both the temperature and the amount of accumulated precipitation. All the mean daily maximum and daily minimum temperatures were well above normal.

During the month of September 2020, there have been recorded unusual high maximum temperatures in most of Cyprus regions. In fact, this year's September is considered, in general, to have been a month of extreme temperatures for many areas all over the island.

Daily maximum temperatures were recorded with positive departures greater than 4°C at all stations of reference, like Prodromos station where the highest daily maximum temperature (38.2°C) was 13.6°C greater than normal (24.6°C) and Athalassa station, where the highest daily maximum temperature (45.3°C) was 11.7°C greater than normal (33.6°C).

Daily minimum temperatures were recorded with positive departures greater than 4°C at all stations of reference, like Prodromos station where the highest daily minimum temperature (25.9°C) was 11°C greater than normal (14.9°C) and Larnaka's station, where the highest daily minimum temperature (26.8°C) was 7°C greater than normal (19.8°C).

During **September** extreme high temperatures EMMA warnings were issued with yellow awareness level, on 1, 3, 4, 7, 8, 11, 16 and 29 of **September**, with orange awareness level on 5 and 9 of **September** and with red awareness level on 3 and 4 of **September**.

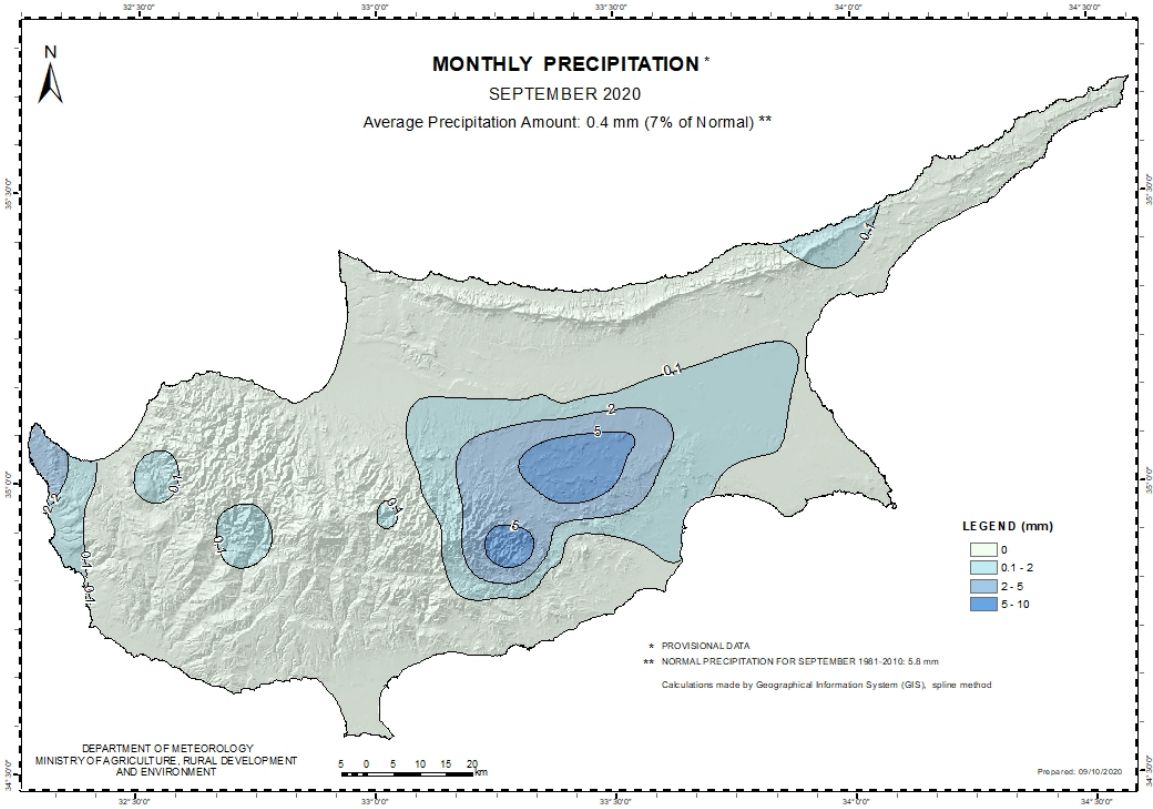
From the provisional data recorded by the Department of Meteorology on 21<sup>st</sup> and 25<sup>th</sup> of **September** episodes of showers resulted in accumulated precipitation of 7% of normal only.

TEMPERATURE AND PRECIPITATION PROVISIONAL DATA FOR SEPTEMBER 2020														
St. No.	Station Name	Mean Daily Maximum Temperature (°C)	Normal Value (1981-2010)	Difference from Normal Value	Highest Daily Maximum Temperature (°C)	Lowest Daily Maximum Temperature (°C)	Mean Daily Minimum Temperature (°C)	Normal Value (1981-2010)	Difference from Normal Value	Lowest Daily Minimum Temperature (°C)	Highest Daily Minimum Temperature (°C)	Monthly Total Precipitation (mm)	Normal Value (1981-2010)	Difference from Normal Value
41	POLIS CHRYSOCHOUS	33,1	30,1	3,0	37,7	29,6	21,9	19,2	2,7	19,2	24,2	0,0	4,0	-4,0
82*	PAFOS (AIRPORT)	31,7	29,0	2,7	34,8	29,4	21,3	19,1	2,2	19,7	24,0	0,0	3,6	-3,6
225	PRODROMOS (C.F.C.)	30,4	24,6	5,8	38,2	25,6	18,2	14,9	3,3	13,3	25,9	0,0	10,7	-10,7
666*	ATHALASSA (RADIOSONDE)	38,2	33,6	4,6	45,3	33,9	20,8	18,8	2,0	17,1	25,0	IXNH	12,2	#VALUE!
731	LARNAKA (AIRPORT)	33,9	30,9	3,0	38,9	31,3	23,1	19,8	3,3	20,9	26,8	0,2	4,3	-4,1
800**	ACHNA (DASAKI)	33,9	31,9	2,0	39,2	30,4	21,7	19,6	2,1	18,2	24,3	0,0	2,9	-2,9

\* Pafos' and Athalassa's Station Normal Values cover the period 1983-2010  
 \*\* Achna's Temperature Normal Values cover the period 1981-2007

= VALUES FROM AUTOMATIC WEATHER STATION

For the purpose of better visualization of **September** accumulated precipitation, a chart of Cyprus with the total preliminary accumulated precipitation is presented.



A Cyprus chart with the normal (period 1981 to 2010) accumulated precipitation for the month of **September** is also presented.

