

## Seasonal weather forecast for the months of

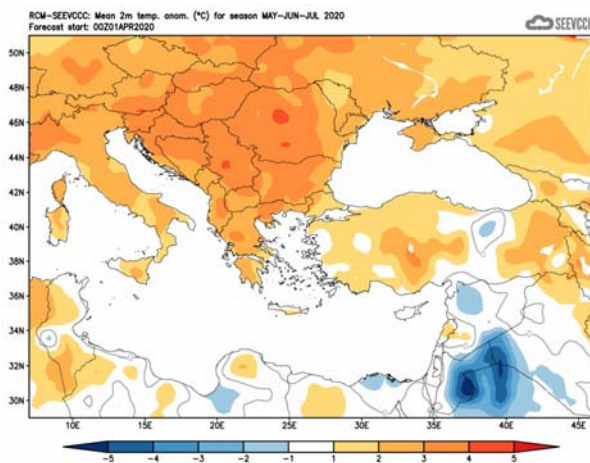
### May, June and July 2020

#### General overview of the weather expected to prevail for May, June and July.

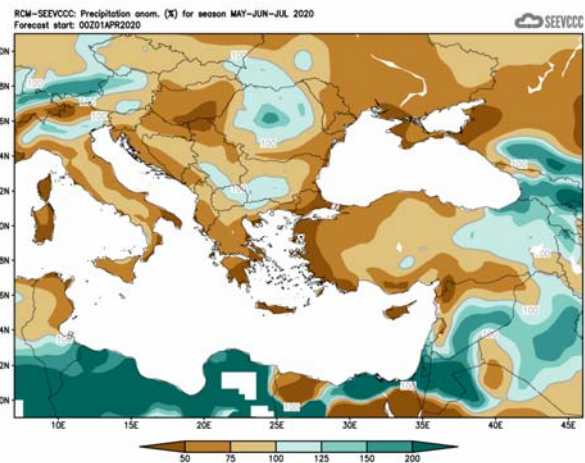
The weather for the following three months, namely **May, June and July 2020**, will be presented, with respect to the anomalies of temperature, and accumulated precipitation. Normal temperatures (both maximum and minimum), are on the rise suggesting July as the hottest month of the year. The accumulated precipitation is at its lowest values. The period of the following three months is likely to be characterized as a series of unstable months, with outbreaks of thunderstorms, initiated from thermal (mainly) causes or over the mountainous range from orographic lifting.

Specifically, regarding the seasonal forecast for the period of **May, June and July 2020**, the temperature will be generally normal (normal temperature characterizes the greater part of the continental area surrounding eastern Mediterranean while the Balkans will be warmer than normal). The amount of the accumulated precipitation is expected to range below 50% of normal over the entire island.

It must be mentioned that the over all normal precipitation of the months in discussion is not of that amount to contribute significantly to the annual normal precipitation.



Divergence of temperature from normal from the mean seasonal temperature (°C) for May, June and July

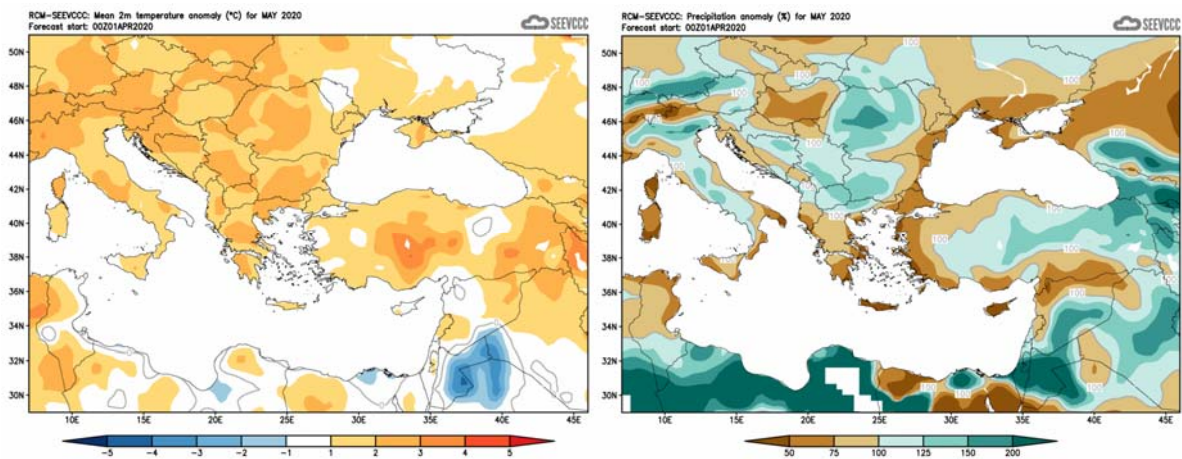


Percentage (%) of the mean seasonal accumulated precipitation compared to the mean normal for May, June and July

## The seasonal monthly forecast in detail

### May

The seasonal forecast suggests that **May's** temperature will be generally normal with the western part being possibly warmer by 1° to 2°C than normal, while normal to above normal is suggested to be over most parts of the surrounding area. Regarding the accumulated precipitation is expected to range below 50% of normal over the island.

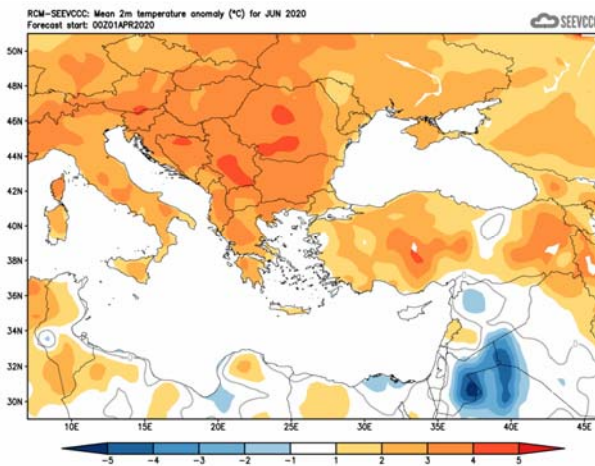


Divergence of the mean monthly temperature (°C)  
from normal during May

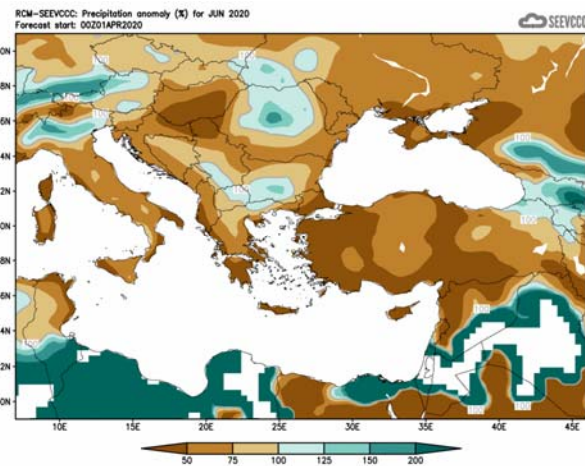
Percentage of the mean monthly precipitation (%)  
compared with the normal of May

## June

The seasonal forecast suggests that **June's** temperature will be generally normal, as **Mays** forecast suggested. The surrounding area will be mostly characterized with normal to above normal temperatures. Regarding the accumulated precipitation is expected range again below 50% of normal.



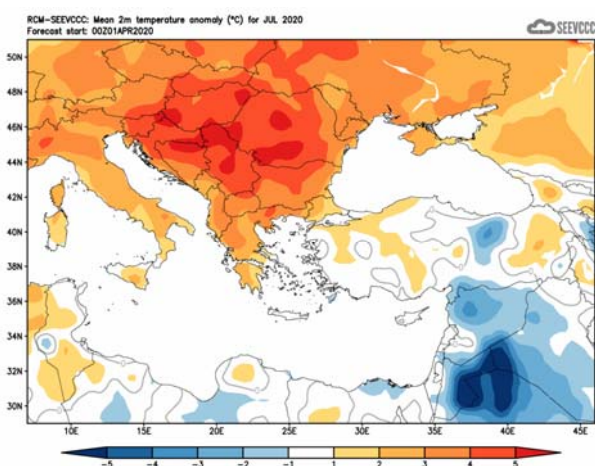
Divergence of the mean monthly temperature (°C) from normal during June



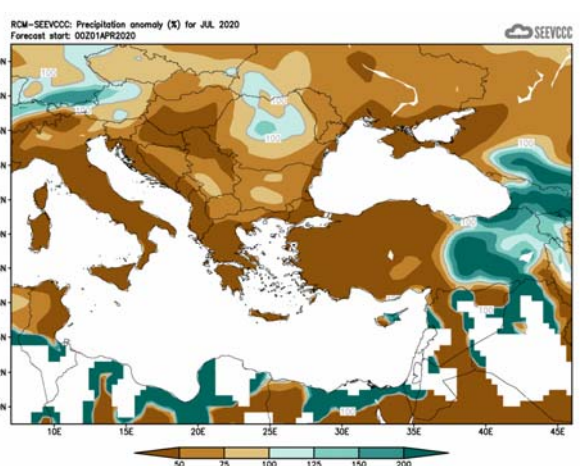
Percentage of the mean monthly precipitation (%) compared with the normal of June

## July

The seasonal forecast suggests that **July's** temperature will be generally normal. Regarding the accumulated precipitation, over the west part is expected to range below 50% of normal but over the east part as suggested, by the seasonal forecast the accumulated precipitation, to be significantly above normal (up to 200%).



Divergence of the mean monthly temperature (°C) from normal during July



Percentage of the mean monthly precipitation (%) compared with the normal of July

### Normal values of temperature and accumulated precipitation for May, June and July 2020

The normal values of mean maximum mean minimum temperature and accumulated precipitation are presented below concerning the three months the period of forecast is covering, in order to gain a better view of the normal seasonal climate. The period of forecast is the transitional period in which the atmosphere switches from its winter pattern to the summer one. The temperature, both maximum and minimum, is on the rise with **July's** temperature significantly higher. Climatologically extreme high temperatures are recorded during **July**.

On the other hand, the accumulated precipitation is declining, as presented by the climatological data shown on the table below.

**May, June and July** are climatologically suggested to be unstable months with thundery activity initiated mainly by thermal causes or orographic uplift. From the table below, note also the effect of the mountainous area of Troodos range over the accumulated precipitation, mainly because of thundery activity, which is affecting primarily the mountainous ranges of the island. The accumulated precipitation over Prodromos station although declining towards **July** is always significantly higher, if compared to the accumulated precipitation of the other selected stations.

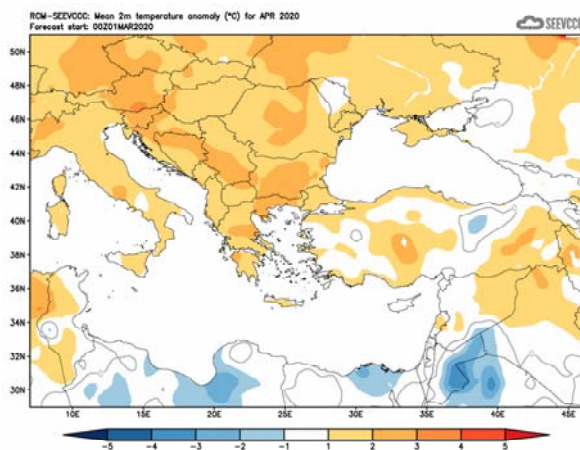
TEMPERATURE AND PRECIPITATION NORMAL VALUES FOR THE PERIOD 1981-2010									
Area Name	MEAN DAILY MAXIMUM TEMPERATURE (°C)			MEAN DAILY MINIMUM TEMPERATURE (°C)			MEAN MONTHLY TOTAL PRECIPITATION (mm)		
	May	June	July	May	June	July	May	June	July
NORTH COAST	25.8	30.3	33.4	14.3	18.5	21.1	7.6	1.8	0.1
WEST COAST*	24.5	27.6	29.9	14.7	18.0	20.6	6.1	1.3	0.2
MOUNTAINOUS AREAS	20.4	25.0	27.9	10.8	15.0	18.2	32.0	27.2	16.4
INLAND*	29.6	34.0	37.1	14.8	19.1	22.1	24.6	11.6	4.2
SOUTH COAST	26.4	30.2	32.5	15.7	19.4	22.0	9.8	2.0	0.5
EAST COAST**	27.4	31.0	33.2	14.9	18.9	21.8	10.7	1.8	0.1

\* West Coast and Inland Values cover the period 1983-2010

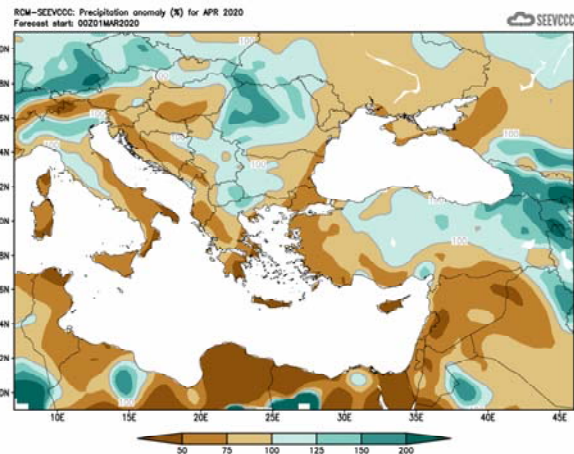
\*\* East Coast Temperature Values cover the period 1981-2007

### Evaluation of April's seasonal forecast for the area of Cyprus

The seasonal forecast suggested that **April's** temperature would be generally normal. Regarding the accumulated precipitation Cyprus was expected to be again in a dry zone extending from the Southern Balkans towards Near and Middle East. Thus, the accumulated precipitation was expected to range below 50% of normal, over the island.



Divergence of the mean monthly temperature (°C) from normal during April



Percentage of the mean monthly precipitation (%) compared with the normal of April

Concerning the model's evaluation for **April**, a general judgment is that the model performed very well concerning the temperature, but not well concerning the accumulated precipitation.

The recorded data is shown that the mean daily maximum and mean daily minimum temperatures were normal, as the model suggested. Extremes (deviating by 4°C or more from normal) were recorded in many of the selected meteorological stations. As an example, note the recorded maximum of Prodromos that was 22.4°C (with a normal of 15.5°C) and the maximum of Athalassa that was 30.3°C (with a normal of 24.4°C). Concerning the mean daily minimum temperatures note the recorded minimum of Pafos that was 17.1°C (with a normal of 11.5°C) and the minimum of Achna that was 16°C (with a normal of 10.9°C).

From the distribution (provisional accumulated precipitation chart) of the accumulated precipitation of **April** is evident that the surface distribution was around normal reaching 25mm (109% of normal).

For the periods 1-3, 6-10, 23-26 and 29-30 of **April** local showers, accompanied with thunderstorms sometimes, were recorded. It is worth mentioning that on the 8<sup>th</sup> and 9<sup>th</sup> of **April** hail was reported.

On the 9<sup>th</sup>, 10<sup>th</sup> and the 25<sup>th</sup> of **April** EMMA yellow warnings were issued concerning thunderstorms.

**TEMPERATURE AND PRECIPITATION PROVISIONAL DATA FOR APRIL 2020**

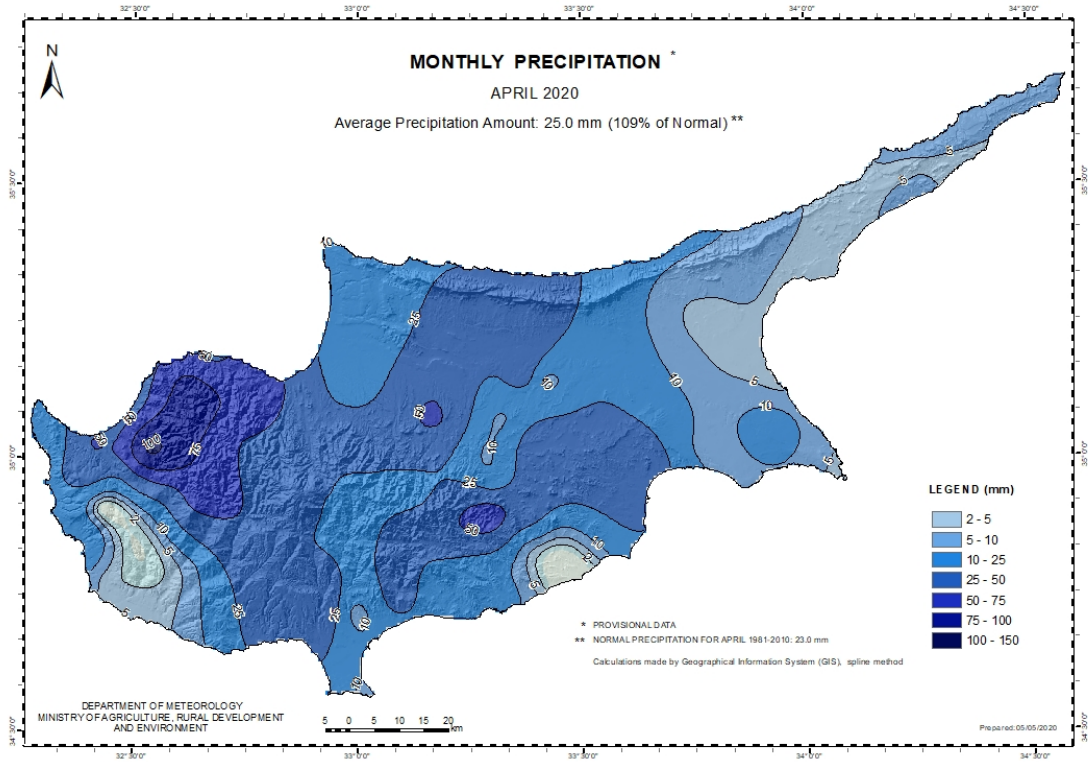
St. No.	Station Name	Temperature				Precipitation					Total Precipitation			
		Actual Value (mm)	Normal Value (1981-2010)	Difference from Normal Value	Highest Daily Maximum Temperature (°C)	Lowest Daily Maximum Temperature (°C)	Actual Value (mm)	Normal Value (1981-2010)	Difference from Normal Value	Lowest Daily Minimum Temperature (°C)	Highest Daily Minimum Temperature (°C)	Actual Value (mm)	Normal Value (1981-2010)	Difference from Normal Value
01	ΠΕΡΙΣΣΕΥΣΗ	21,8	21,6	0,2	26,5	18,7	11,2	10,8	0,4	8,4	14,1	41,8	21,8	20,0
02	ΠΑΦΟΣ (ΑΪΦΩΤ)	21,7	21,5	0,2	26,9	19,0	11,4	11,5	-0,3	8,3	17,1	5,0	15,2	-10,2
03	ΠΟΛΙΧΡΟΝΙΟΤΑ	16,2	15,5	0,7	22,4	6,8	5,6	6,6	-1,0	1,7	10,6	88,8	47,2	-13,9
04	ΑΓΙΑ ΑΡΧΑΓΓΕΛΟΥ ΠΟΛΙΧΡΟΝΙΟΤΑ	22,5	24,4	-1,1	30,3	19,3	20,8	10,4	0,4	6,3	14,8	18,8	19,1	-0,6
05	ΑΧΜΑ (ΑΪΦΩΤ)	22,5	22,7	-0,6	27,8	19,8	14,8	11,8	0,5	8,7	17,1	86,8	14,2	12,3
06	ΑΧΜΑ (ΟΡΟΣ)	23,1	23,2	-0,1	28,3	18,6	10,6	10,9	-0,3	5,8	16,0	8,0	19,7	-11,7

\* Pafos' and Athalassa's Station Normal Values cover the period 1983-2010

\*\* Achma's Temperature Normal Values cover the period 1981-2007

- VALUES FROM AUTOMATIC WEATHER STATION

For better visualization of **April** accumulated precipitation, a chart of Cyprus with the total preliminary accumulated precipitation is presented.



A Cyprus chart with the normal (period 1981 to 2010) accumulated precipitation for the month of **April** is also presented.

