

Seasonal weather forecast for the months of

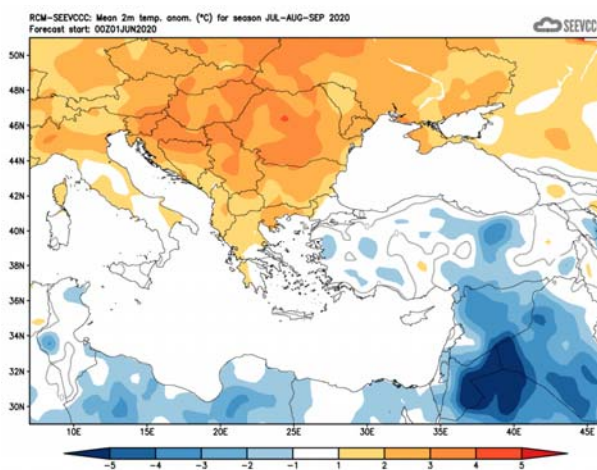
July, August and September 2020

General over view of the weather expected to prevail for July, August and September.

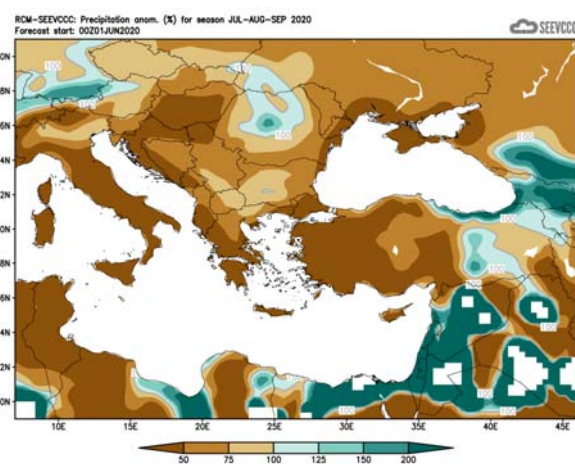
The weather for the following three months, namely **July, August and September 2020**, will be presented, with respect to the anomalies of temperature, and accumulated precipitation. Normal temperatures (both maximum and minimum), are on the rise suggesting **August** as the hottest month of the year. The accumulated precipitation is at its lowest values. The period of the following three months (mainly July and August) is likely to be characterized by outbreaks of thunderstorms, initiated from thermal causes over the main plain area or over the mountainous range from orographic uplift.

Specifically, regarding the seasonal forecast for the period of **July, August and September 2020**, the temperature will be generally normal. Normal to lower than normal temperature characterizes also the greater part of Asia Minor, while the Balkans will be warmer than normal and near East will be again lower than normal. The amount of the accumulated precipitation over Cyprus is expected to be below 50% of normal, while over the north part will range between 50% to 75% of normal.

Regarding the seasonal forecast, based on the climatology of the island, the accumulated precipitation is expected to be below normal (as shown in the tables below). Any precipitation in Cyprus will be a result of thermal instability, in the form of a thunderstorm, with very local and temporal characteristics. For the above reason, but also due to the inability of the seasonal model to estimate precipitation for the region of Cyprus due to thermal instability, no extended comment will be made.



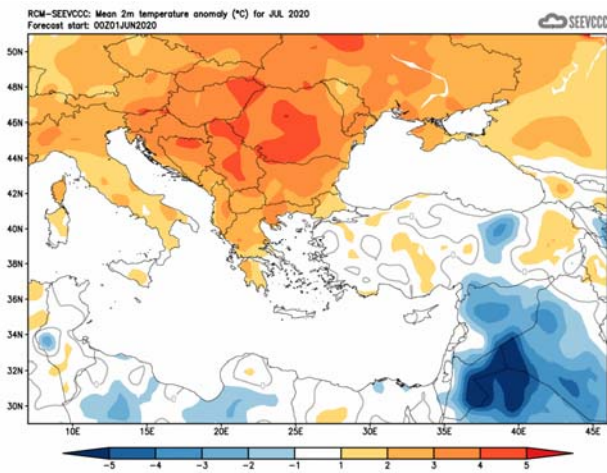
Divergence of temperature from normal from the mean seasonal temperature (°C) for July, August and September



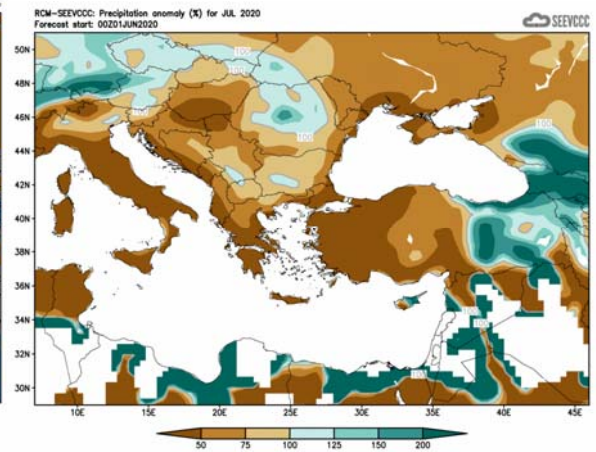
Percentage (%) of the mean seasonal accumulated precipitation compared to the mean normal for July, August and September

The seasonal monthly forecast in detail

The seasonal forecast suggests that **July's** temperature will be normal alike Asia Minor. Regarding the accumulated precipitation Cyprus west part is expected to be below 50% of normal but over the east part accumulated precipitation is expected to range up to 200% of normal.

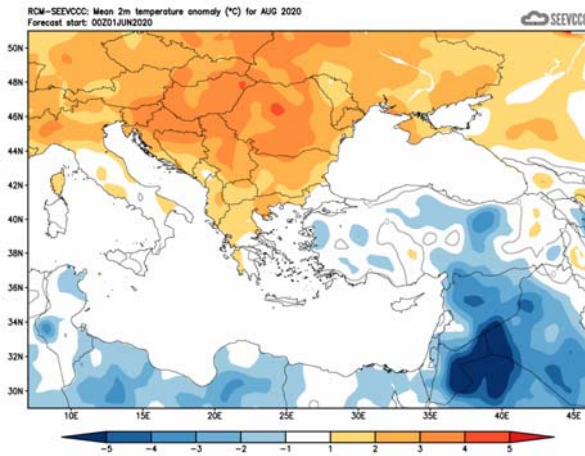


Divergence of the mean monthly temperature (°C) from normal during July

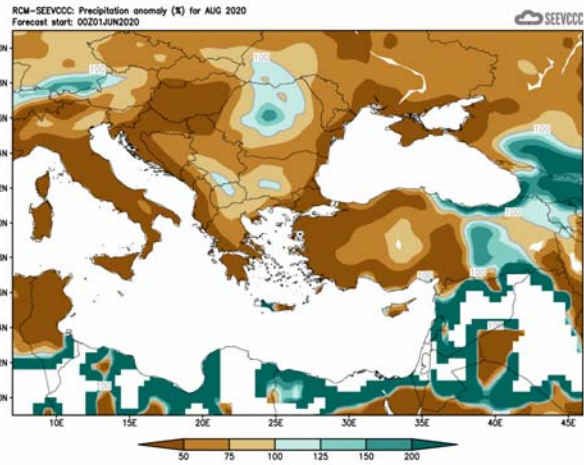


Percentage of the mean monthly precipitation (%) compared with the normal of July

August's seasonal forecast suggests that temperature will be generally normal. Regarding the accumulated precipitation it will range below 75% of normal except the northwest part where it will range up to normal.

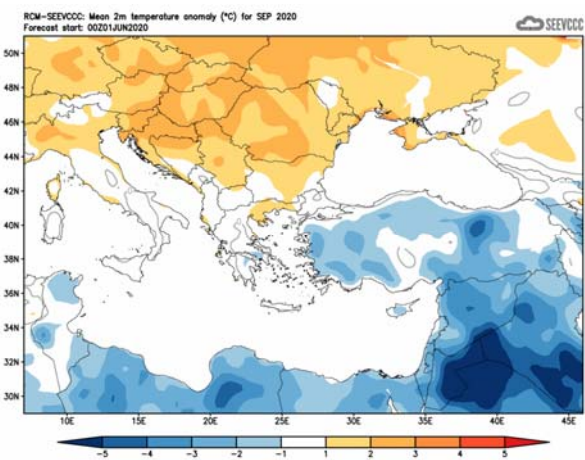


Divergence of the mean monthly temperature (°C) from normal during August

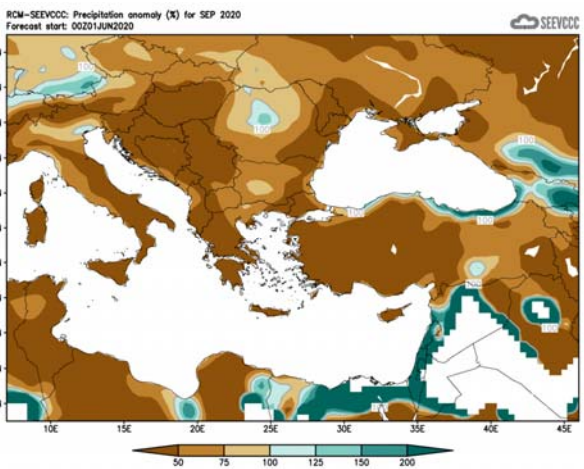


Percentage of the mean monthly precipitation (%) compared with the normal of August

The seasonal forecast suggests that **September's** temperature will be mainly inland generally below normal, by 1 to 2°C. The below normal temperature is also a characteristic of the area of Asia Minor and Near and Middle East. Regarding the accumulated precipitation Cyprus will be with the accumulated precipitation ranging below 50% of normal. A dry characteristic has also the entire area of Asia Minor and Balkans, while Near East is expected to be significantly above normal.



Divergence of the mean monthly temperature (°C) from normal during September



Percentage of the mean monthly precipitation (%) compared with the normal of September

Normal values of temperature and accumulated precipitation for July, August and September 2020

The normal values of mean maximum mean minimum temperature and accumulated precipitation are presented below concerning the three months the period of forecast is covering, in order to gain a better view of the normal seasonal climate. The temperature, both maximum and minimum, is on the rise with **July's** and **August's** temperature significantly higher than **September's**. On the other hand the accumulated precipitation is declining during **July** and **August**, as presented by the climatological data shown on the table below. Thundery activity is likely during afternoon hours mainly inland and over the mountains, which is noted also from the table below. Note the cause of the mountainous area of Troodos range over the accumulated precipitation, mainly as a result of thundery activity, which is affecting primarily the mountainous ranges of the island. The accumulated precipitation over Prodomos station although declining towards **September** is always significantly higher, if compared to the accumulated precipitation of the other selected stations. It is worth noting that during September accumulated precipitation starts a rise in all selected stations.

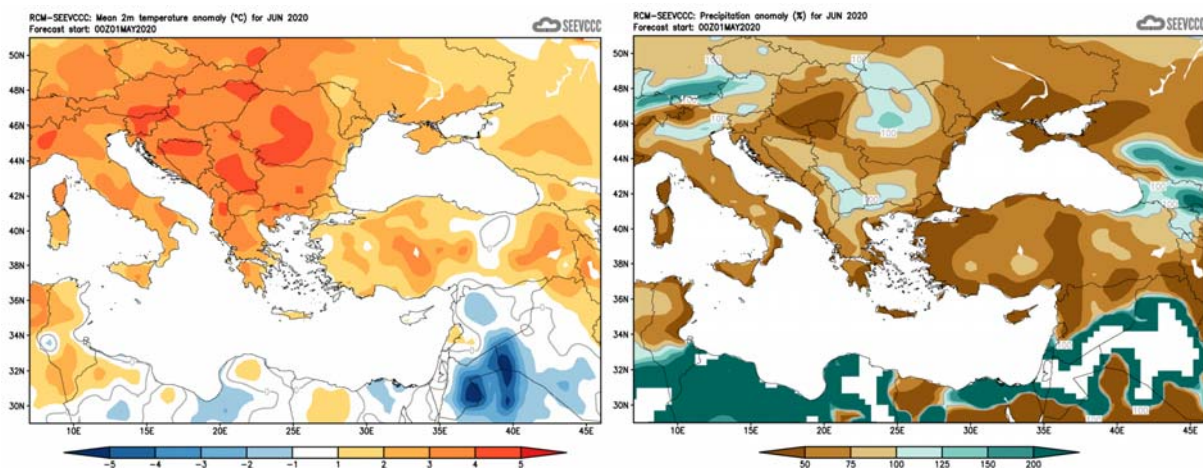
TEMPERATURE AND PRECIPITATION NORMAL VALUES FOR THE PERIOD 1981-2010									
Area Name	MEAN DAILY MAXIMUM TEMPERATURE (°C)			MEAN DAILY MINIMUM TEMPERATURE (°C)			MEAN MONTHLY TOTAL PRECIPITATION (mm)		
	July	August	September	July	August	September	July	August	September
NORTH COAST	33.4	33.3	30.1	21.1	21.5	19.2	0.1	0.0	4.0
WEST COAST*	29.9	30.5	29.0	20.6	21.1	19.1	0.2	0.0	3.6
MOUNTAINOUS AREAS	27.9	28.0	24.6	18.2	18.1	14.9	16.4	12.0	10.7
INLAND*	37.1	36.9	33.6	22.1	21.9	18.8	4.2	1.8	12.2
SOUTH COAST	32.5	32.9	30.9	22.0	22.3	19.8	0.5	0.3	4.3
EAST COAST**	33.2	33.5	31.9	21.8	22.0	19.6	0.1	0.1	2.9

* West Coast and Inland Values cover the period 1983-2010

** East Coast Temperature Values cover the period 1981-2007

Evaluation of Junes seasonal forecast for the area of Cyprus

The seasonal forecast suggested that **June's** temperature would be generally normal while the Balkans and Middle East would be warmer than normal. Regarding the accumulated precipitation Cyprus was expected to be dry without the occurrence of dynamic barometric weather systems.



Divergence of the mean monthly temperature (°C) from normal during June

Percentage of the mean monthly precipitation (%) compared with the normal of June

Concerning the models' evaluation for **June**, a general judgment is that the model performed relatively well, concerning both the temperature and the accumulated precipitation. It must be mentioned that during summer month's precipitation is resulted mainly from thundery activity which has very localised characteristics and that judging is very difficult due to models limitations. Never the less June recorded 0.5mm of accumulated precipitation resulting to 8% of the climatological precipitation (6.6mm).

The accumulated precipitation was a result of local rain showers on the 3rd, 4th, 14th and 19th of June.

TEMPERATURE AND PRECIPITATION PROVISIONAL DATA FOR JUNE 2020														
St. No.	Station Name	Mean Daily Maximum Temperature (°C)	Normal Value (1981-2010)	Difference from Normal Value	Highest Daily Maximum Temperature (°C)	Lowest Daily Maximum Temperature (°C)	Mean Daily Minimum Temperature (°C)	Normal Value (1981-2010)	Difference from Normal Value	Lowest Daily Minimum Temperature (°C)	Highest Daily Minimum Temperature (°C)	Monthly Total Precipitation (mm)	Normal Value (1981-2010)	Difference from Normal Value
41	POLIS CHRYSOCHOUS	29.4	30.3	-0.9	35.5	24.1	18.1	18.5	-0.4	14.1	22.9	0.0	1.8	-1.8
82*	PAFOS (AIRPORT)	27.4	27.6	-0.2	29.7	25.0	18.0	18.0	0.0	14.1	22.4	0.0	1.3	-1.3
225	PRODROMOS (C.F.C.)	26.1	25.0	1.1	30.6	17.3	13.3	15.0	-1.7	6.6	19.0	0.7	27.2	-26.5
666*	ATHALASSA (RADIOSONDE)	34.4	34.0	0.4	40.5	29.0	18.4	19.1	-0.7	13.4	25.1	0.3	11.6	-11.3
731	LARNAKA (AIRPORT)	30.1	30.2	-0.1	33.3	26.0	19.3	19.4	-0.1	14.9	23.8	0.7	2.0	-1.3
800**	ACHNA (DASAKI)	29.6	31.0	-1.4	36.9	24.8	17.7	18.9	-1.2	13.4	22.7	0.0	1.8	-1.8

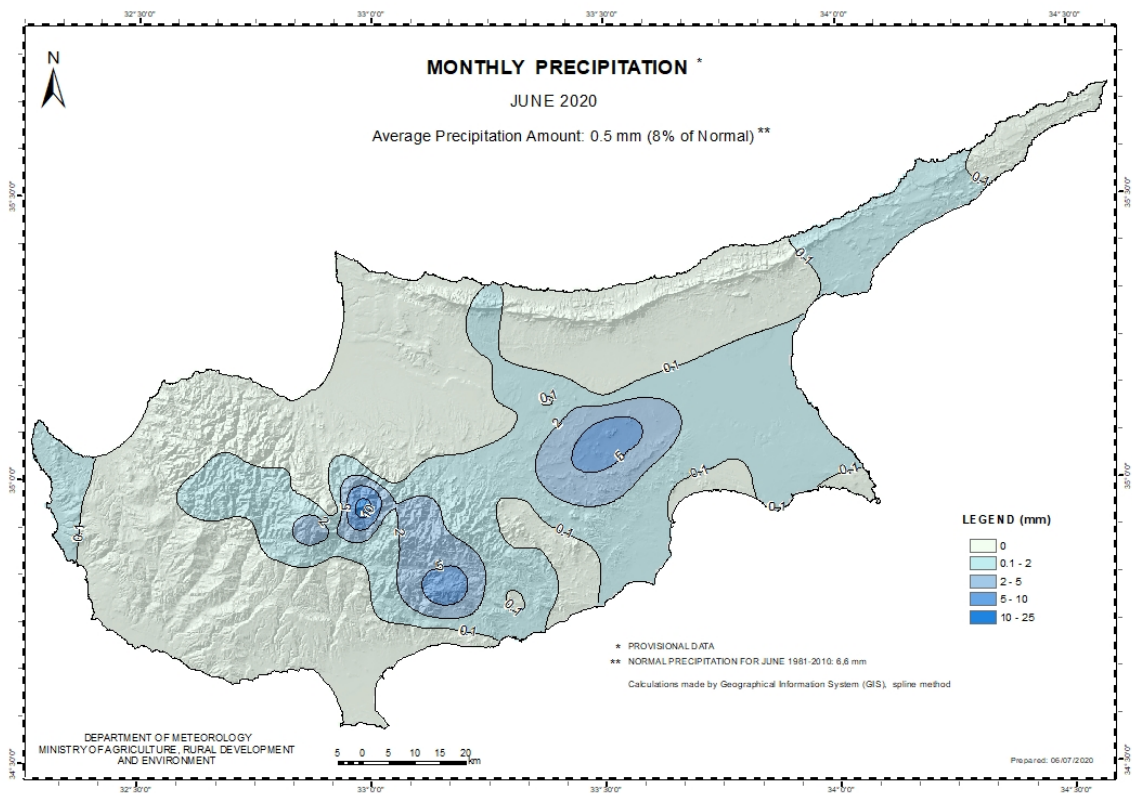
* Pafos' and Athalassa's Station Normal Values cover the period 1983-2010
 ** Achna's Temperature Normal Values cover the period 1981-2007

= VALUES FROM AUTOMATIC WEATHER STATION

About the evaluation of the recorded temperatures all of the maximum and minimum (table above) were around normal, except the station of Achna. Extremes were also recorded with great positive departures, like Athalassa station where the maximum for the station was 40.5°C departing 6.5°C from the normal (36°C), and at Achna station, where the maximum temperature of the station was 36.9°C was 5.9°C greater than normal of 31°C.

For the period 27-29 of **June** EMMA yellow warnings were issued, concerning high temperature.

For the purpose of better visualization of **June** accumulated precipitation, a chart of Cyprus with the total preliminary accumulated precipitation is presented.



A Cyprus chart with the normal (period 1981 to 2010) accumulated precipitation for the month of **June** is also presented.

