

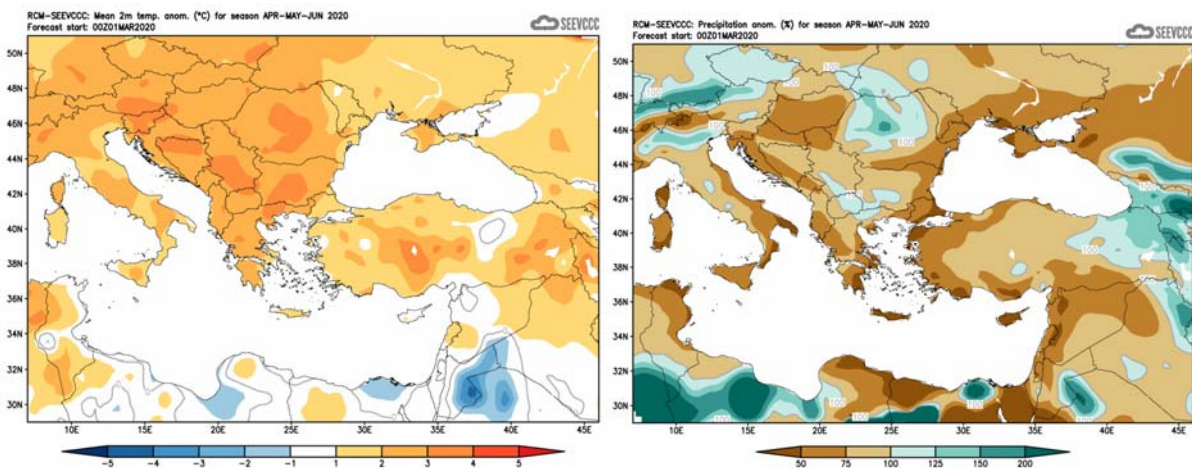
## Seasonal weather forecast for the months of

### April, May and June 2020

#### General overview of the weather expected to prevail for April, May and June.

The weather for the following three months period, namely **April, May and June 2020**, will be presented, with respect to the anomalies of temperature, and accumulated precipitation. In general, the normal temperatures (both maximum and minimum), are on the rise. The accumulated precipitation starts declining, since barometric systems over the area resulting in from dynamic causes, are not frequent and are getting progressively rare during the period in focus. The period of the following three months is likely to be characterized from thermal instability, with outbreaks of thunderstorms, initiated from dynamic (rarely) and/or thermal (mainly) causes, mainly during afternoon hours. Dust episodes are also likely during the first two month of the period. From historical data, **April** contributes only with a couple of snow days to the total snow day's number of the hydrological year.

Specifically, regarding the seasonal forecast for the period **April, May and June 2020**, the temperature will be generally normal (normal to above normal temperature characterizes the surrounding area). The amount of the accumulated precipitation over Cyprus is expected to range generally below 50% of normal.

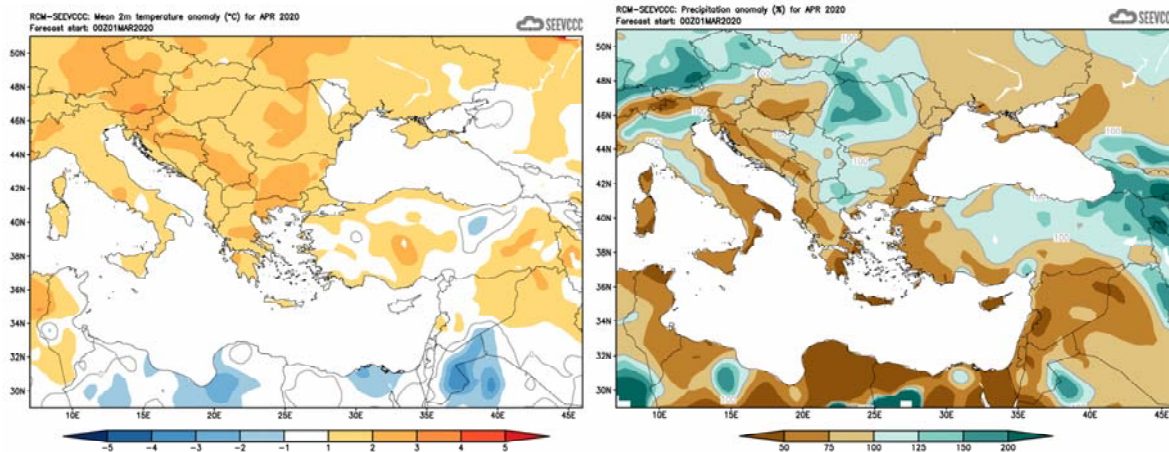


Divergence of temperature from normal from the mean seasonal temperature (°C) for April, May and June

Percentage (%) of the mean seasonal accumulated precipitation compared to the mean normal for April, May and June

## April

The seasonal forecast suggests that **April's** temperature will be generally normal. Regarding the accumulated precipitation Cyprus is expected to be again in a dry zone extending from the Southern Balkans towards Near and Middle East. Thus, the accumulated precipitation is expected to range below 50% of normal, over the island.

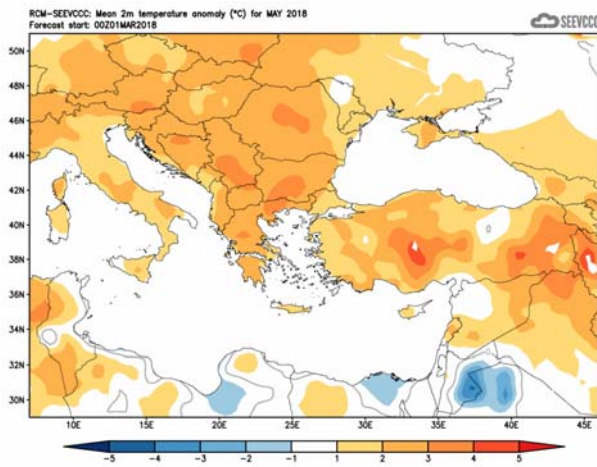


Divergence of the mean monthly temperature (°C)  
from normal during April

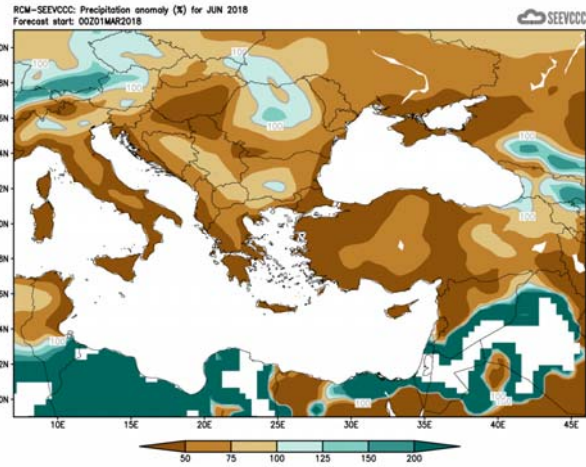
Percentage of the mean monthly precipitation (%)  
compared with the normal of April

## May

The seasonal forecast suggests that **May's** temperature will be generally normal to slightly above normal. Regarding the accumulated precipitation Cyprus is expected to be again in a dry zone extending from the Southern Balkans towards Near and Middle East. So, the accumulated precipitation is expected to range again below 50% over the entire island, said that the normal accumulated precipitation of May is not contributing significantly to the total precipitation amount of the island.



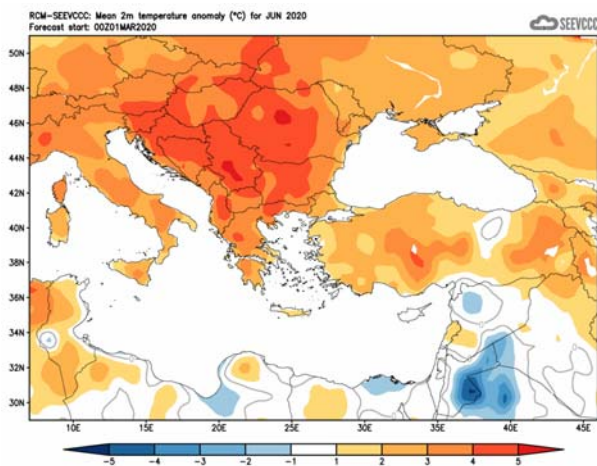
Divergence of the mean monthly temperature (°C) from normal during May



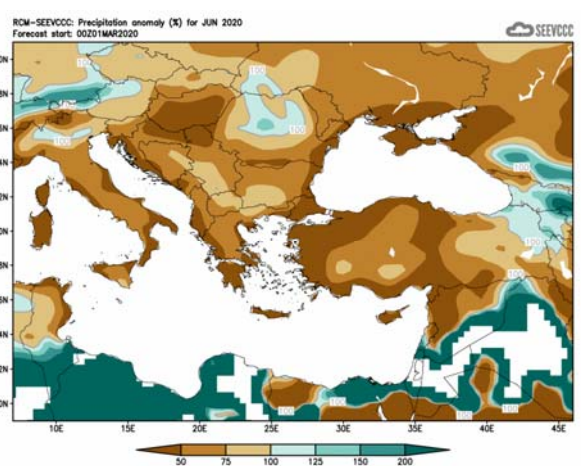
Percentage of the mean monthly precipitation (%) compared with the normal of May

## June

The seasonal forecast suggests that **June's** temperature will be generally normal. Regarding the accumulated precipitation Cyprus is expected to be again dry with the accumulated precipitation below 50%.



Divergence of the mean monthly temperature (°C) from normal during June



Percentage of the mean monthly precipitation (%) compared with the normal of June

### Normal values of temperature and accumulated precipitation for April, May and June

The normal values of mean maximum, mean minimum temperature and accumulated precipitation are presented below concerning the three months of the period of forecast is covering, in order to gain a better view of the normal seasonal climate. The period of forecast is the transitional period in which the atmosphere switches from its winter pattern to the summer one. The temperature, both maximum and minimum, is on the rise with **June's** temperature significantly higher than **April's** temperature.

On the other hand, the accumulated precipitation is declining, as presented by the climatological data shown on the table below. During **April** the accumulated precipitation notes a significant decline (if compared to **March** - not shown) which suggests that the frequency of the approaching barometric lows declines significantly if not vanish. A further decline of the accumulated precipitation is observed on **May** and **June**.

**April, May** and **June** are climatologically suggested to be unstable months with thundery activity initiated mainly by thermal causes. From the table below, note also the effect of the mountainous area of Troodos range over the accumulated precipitation, mainly as a result of thundery activity which is affecting primarily the mountainous ranges of the island. The accumulated precipitation over Prodomos station although declining towards May is always significantly higher, if compared to the accumulated precipitation of the other selected stations.

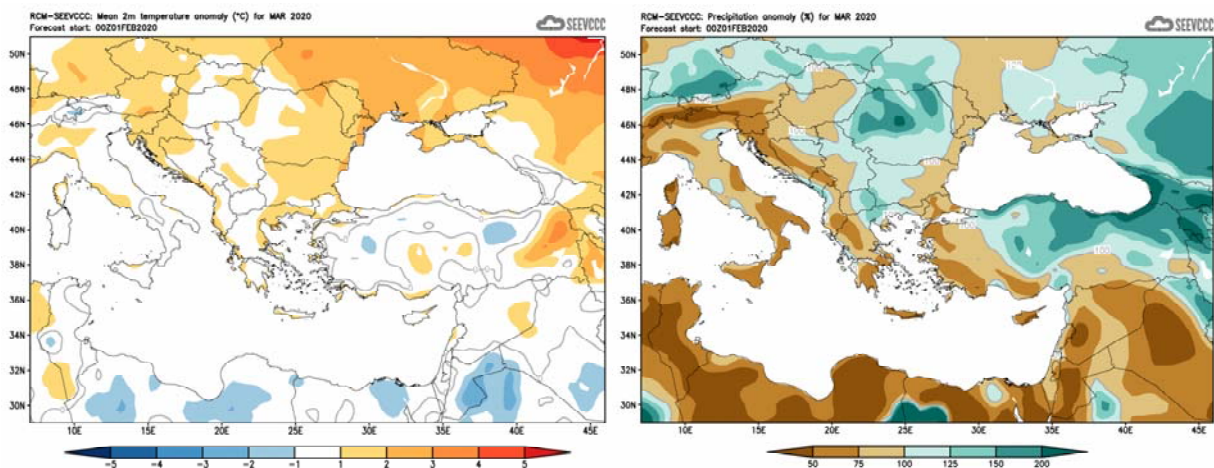
TEMPERATURE AND PRECIPITATION NORMAL VALUES FOR THE PERIOD 1981-2010									
Area Name	MEAN DAILY MAXIMUM TEMPERATURE (°C)			MEAN DAILY MINIMUM TEMPERATURE (°C)			MEAN MONTHLY TOTAL PRECIPITATION (mm)		
	April	May	June	April	May	June	April	May	June
NORTH COAST	21.6	25.8	30.3	10.8	14.3	18.5	21.8	7.6	1.8
WEST COAST*	21.5	24.5	27.6	11.5	14.7	18.0	15.2	6.1	1.3
MOUNTAINOUS AREAS	15.5	20.4	25.0	6.6	10.8	15.0	47.2	32.0	27.2
INLAND*	24.4	29.6	34.0	10.4	14.8	19.1	19.1	24.6	11.6
SOUTH COAST	22.7	26.4	30.2	11.8	15.7	19.4	14.2	9.8	2.0
EAST COAST**	23.2	27.4	31.0	10.9	14.9	18.9	19.7	10.7	1.8

\* West Coast and Inland Values cover the period 1983-2010

\*\* East Coast Temperature Values cover the period 1981-2007

## Evaluation of March seasonal forecast for the area of Cyprus

The seasonal forecast suggested that **March's** temperature would be normal. The temperature over the surrounding area would also be normal. Regarding the accumulated precipitation Cyprus was expected to be again in a dry zone extending from the Southern Balkans towards Near and Middle East. Specifically, the accumulated precipitation was expected to range below 50% of normal over the south-eastern area and between 50 to 75% of normal over the rest of the island.



Divergence of the mean monthly temperature (°C)  
from normal during March

Percentage of the mean monthly precipitation (%)  
compared with the normal of March

Concerning the model's evaluation for **March**, a general judgment is that the model did not perform well concerning not only accumulated precipitation but also temperature.

The seasonal forecast for **March** suggested that temperature would be normal. From the recorded data it is shown that most of the mean daily maximum and mean daily minimum temperatures were above normal.

Extremes (deviating by 4°C or more from normal) were recorded at all the selected meteorological stations. As an example, note the recorded maximum of Polis Chrysochous that was 27.9°C (with a normal of 18.3°C) and the maximum of Prodromos that was 18.6°C (with a normal of 10.4°C). Concerning the mean daily minimum temperatures note the recorded minimum of Larnaka that was 15.4°C (with a normal of 8.6°C) and the minimum of Pafos that was 15.5°C (with a normal of 8.9°C).

The accumulated precipitation was high as presented from the table below. From the distribution (provisional accumulated precipitation chart) of the accumulated precipitation of **March** is evident that the surface distribution was above the expected reaching 56.5mm (115% of normal).

For the periods 5-6, 11-13, 16-17, 19-20, 22-25 and 27-31 of **March** local showers, accompanied with thunderstorms most of the times, were recorded. It is worth mentioning that on the 16<sup>th</sup> and 27<sup>th</sup> of **March** hail was reported.

Based on the provisional data, snowfall was recorded during on the 16<sup>th</sup> , 17<sup>th</sup> , 19<sup>th</sup> και 20<sup>th</sup> of **March**.

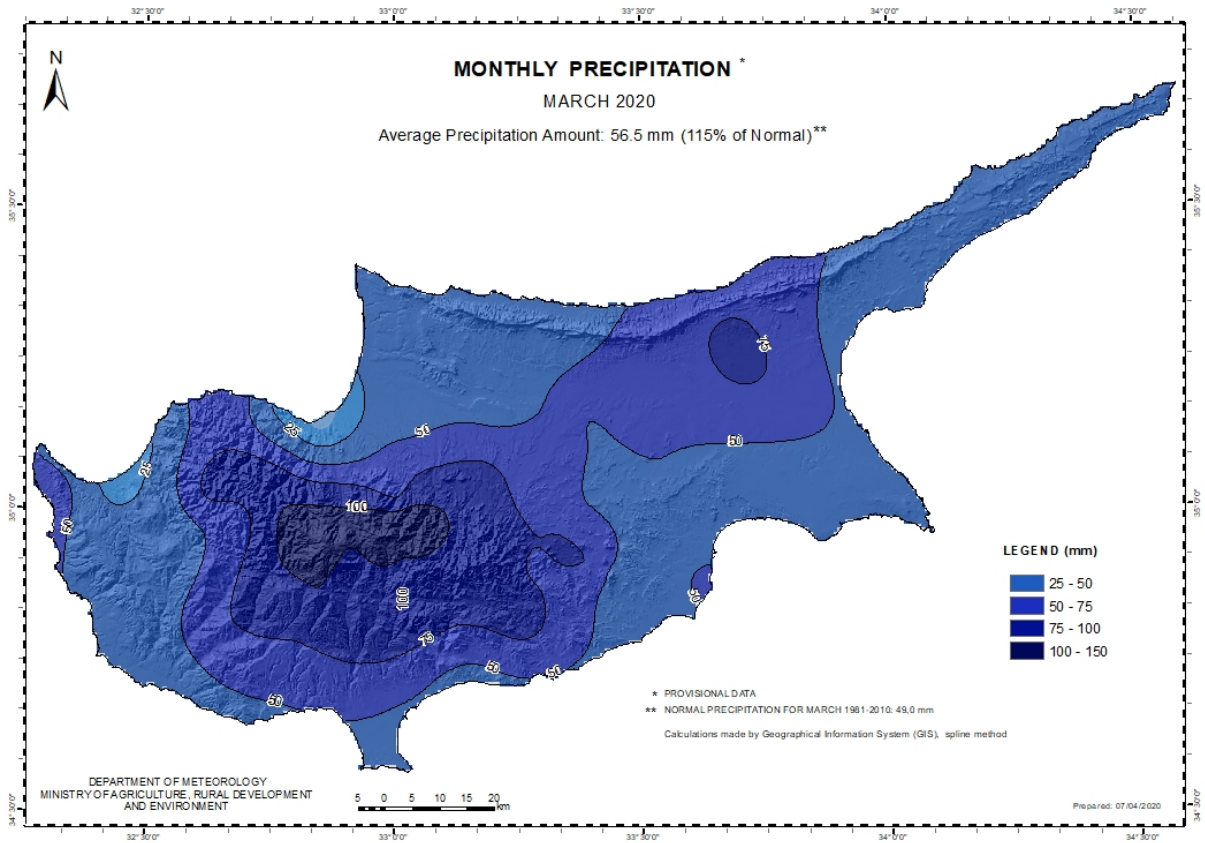
On the 12<sup>th</sup> and the 13<sup>th</sup> of **March** EMMA yellow warnings were issued concerning wind, rain and thunderstorms.

TEMPERATURE AND PRECIPITATION PROVISIONAL DATA FOR MARCH 2020														
St. No.	Station Name	Mean Daily Maximum Temperature (°C)	Normal Value (1981-2010)	Difference from Normal Value	Highest Daily Maximum Temperature (°C)	Lowest Daily Maximum Temperature (°C)	Mean Daily Minimum Temperature (°C)	Normal Value (1981-2010)	Difference from Normal Value	Lowest Daily Minimum Temperature (°C)	Highest Daily Minimum Temperature (°C)	Monthly Total Precipitation (mm)	Normal Value (1981-2010)	Difference from Normal Value
41	POLIS CHRYSOCHOUS	19,6	18,3	1,3	27,9	13,2	9,6	8,3	1,3	4,1	14,6	19,6	45,7	-26,1
82*	PAFOS (AIRPORT)	19,6	18,6	1,0	25,8	15,4	10,0	8,9	1,1	4,9	15,5	40,6	34,4	6,2
225	PRODROMOS (C.F.C.)	13,3	10,4	2,9	18,6	3,7	2,8	2,8	0,0	-3,3	9,4	119,8	92,1	27,7
666*	ATHALASSA (RADIOSONDE)	20,9	19,2	1,7	24,4	14,4	8,6	6,9	1,7	1,7	13,4	49,9	31,9	18,0
731	LARNAKA (AIRPORT)	20,2	19,3	0,9	23,9	14,7	10,5	8,6	1,9	3,8	15,4	52,8	35,8	17,0
800**	ACHNA (DASAKI)	19,2	19,1	0,1	24,2	13,3	8,8	7,8	1,0	0,7	13,6	36,4	35,2	1,2

\* Pafos' and Athalassa's Station Normal Values cover the period 1983-2010  
\*\* Achna's Temperature Normal Values cover the period 1981-2007

= VALUES FROM AUTOMATIC WEATHER STATION

For the purpose of better visualization of **March** accumulated precipitation, a chart of Cyprus with the total preliminary accumulated precipitation is presented.



A Cyprus chart with the normal (period 1981 to 2010) accumulated precipitation for the month is also presented.

