

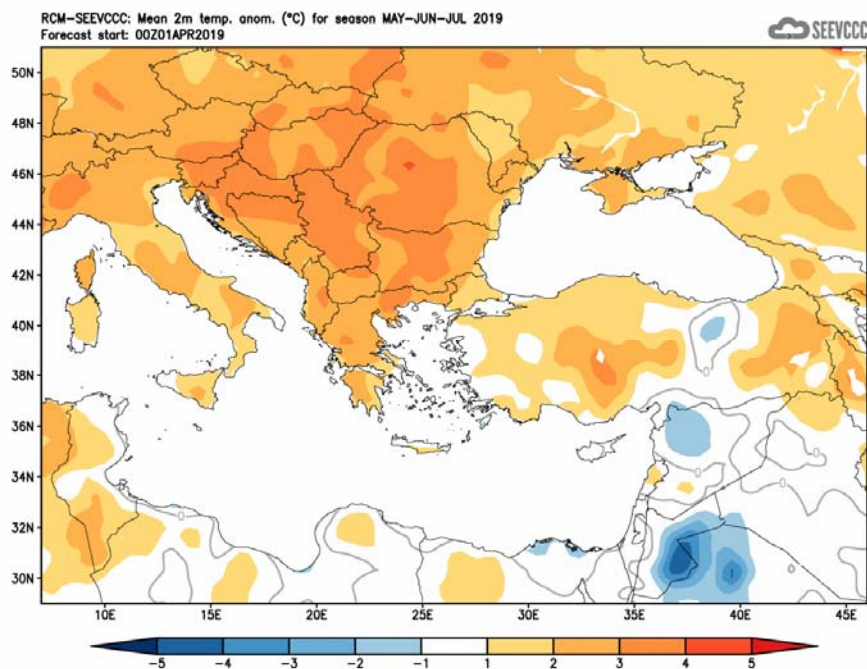
Seasonal weather forecast for the months of

May, June and July 2019

General over view of the weather expected to prevail for May, June and July.

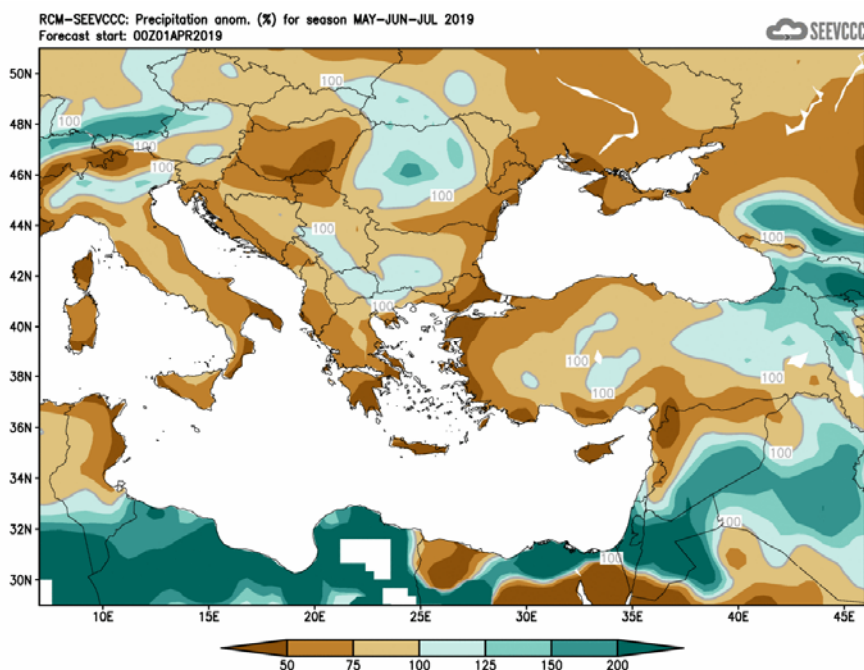
The weather for the following three months, namely **May, June and July 2019**, will be presented, with respect to the anomalies of temperature, and accumulated precipitation. Normal temperatures (both maximum and minimum), are on the rise suggesting July as the hottest month of the year. The accumulated precipitation is at its lowest values. The period of the following three months is likely to be characterized as a series of unstable months, with outbreaks of thunderstorms, initiated from thermal (mainly) causes or over the mountainous range from orographic lifting.

Specifically, regarding the seasonal forecast for the period of **May, June and July 2019**, the temperature will be generally normal (normal temperature characterizes the greater part of the continental area surrounding eastern Mediterranean).



Divergence of temperature from normal from the mean seasonal temperature (°C) for May, June and July

The climatological precipitation over Cyprus, during the period the seasonal forecast is covering, is low and is getting lower towards the end of the period (as presented in the following table). The accumulated precipitation is only due to thunderstorms activity, which is not well captured by the seasonal numerical model. For the above reason no specific information is going to be given to the expected seasonal accumulated precipitation.



Percentage (%) of the mean seasonal accumulated precipitation compared to the mean normal for May, June and July

Normal values of temperature and accumulated precipitation for May, June and July 2019

The normal values of mean maximum mean minimum temperature and accumulated precipitation are presented below concerning the three months the period of forecast is covering, in order to gain a better view of the normal seasonal climate. The period of forecast is the transitional period in which the atmosphere switches from its winter pattern to the summer one. The temperature, both maximum and minimum, is on the rise with **July's** temperature significantly higher. Climatologically extreme high temperatures are recorded during **July**.

On the other hand, the accumulated precipitation is declining, as presented by the climatological data shown on the table below.

May, June and July are climatologically suggested to be unstable months with thundery activity initiated mainly by thermal causes or orographic uplift. From the table below, note also the effect of the mountainous area of Troodos range over the accumulated precipitation, mainly because of thundery activity, which is affecting primarily the mountainous ranges of the island. The accumulated precipitation over Prodromos station although declining towards **July** is always significantly higher, if compared to the accumulated precipitation of the other selected stations.

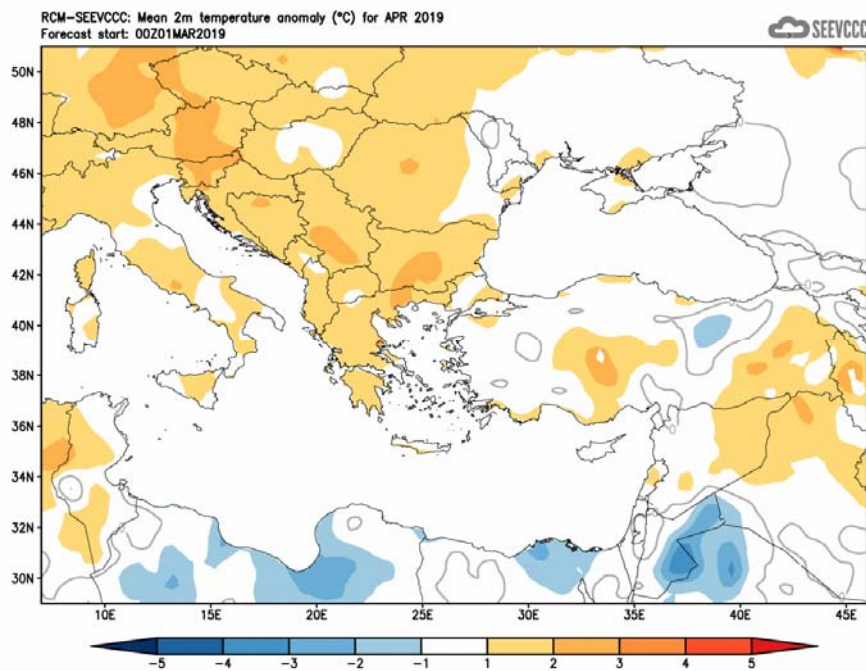
TEMPERATURE AND PRECIPITATION NORMAL VALUES FOR THE PERIOD 1981-2010									
Area Name	MEAN DAILY MAXIMUM TEMPERATURE (°C)			MEAN DAILY MINIMUM TEMPERATURE (°C)			MEAN MONTHLY TOTAL PRECIPITATION (mm)		
	May	June	July	May	June	July	May	June	July
NORTH COAST	25.8	30.3	33.4	14.3	18.5	21.1	7.6	1.8	0.1
WEST COAST*	24.5	27.6	29.9	14.7	18.0	20.6	6.1	1.3	0.2
MOUNTAINOUS AREAS	20.4	25.0	27.9	10.8	15.0	18.2	32.0	27.2	16.4
INLAND*	29.6	34.0	37.1	14.8	19.1	22.1	24.6	11.6	4.2
SOUTH COAST	26.4	30.2	32.5	15.7	19.4	22.0	9.8	2.0	0.5
EAST COAST**	27.4	31.0	33.2	14.9	18.9	21.8	10.7	1.8	0.1

* West Coast and Inland Values cover the period 1983-2010

** East Coast Temperature Values cover the period 1981-2007

Evaluation of April's seasonal forecast for the area of Cyprus

The seasonal forecast suggested that **April's** temperature would be generally normal. The temperature over the surrounding area would also be around normal.



Divergence of the mean monthly temperature (°C) from normal during April

From the provisional data recorded by the Department of Meteorology, for the selected portion of the meteorological stations, which are presented in the table below, is evident that the model performed relatively well concerning the temperature anomaly.

The seasonal forecast for **April** suggested that temperature would be generally normal. From the recorded data is shown that most of the mean daily maximum and mean daily minimum temperatures were around normal.

The accumulated precipitation was relatively high as presented from the table below. From the distribution (provisional accumulated precipitation chart) of the accumulated precipitation of **April** is evident that the surface distribution was well above the expected reaching 37.9mm (165% of normal).

For the periods 1-7, 10-12, 15-20, 26-27 and 29 of **April** local showers, accompanied with thunderstorms most of the times, were recorded. It is worth mentioning that on the 17th, 18th, 19th and 20th of **April** hail was reported.

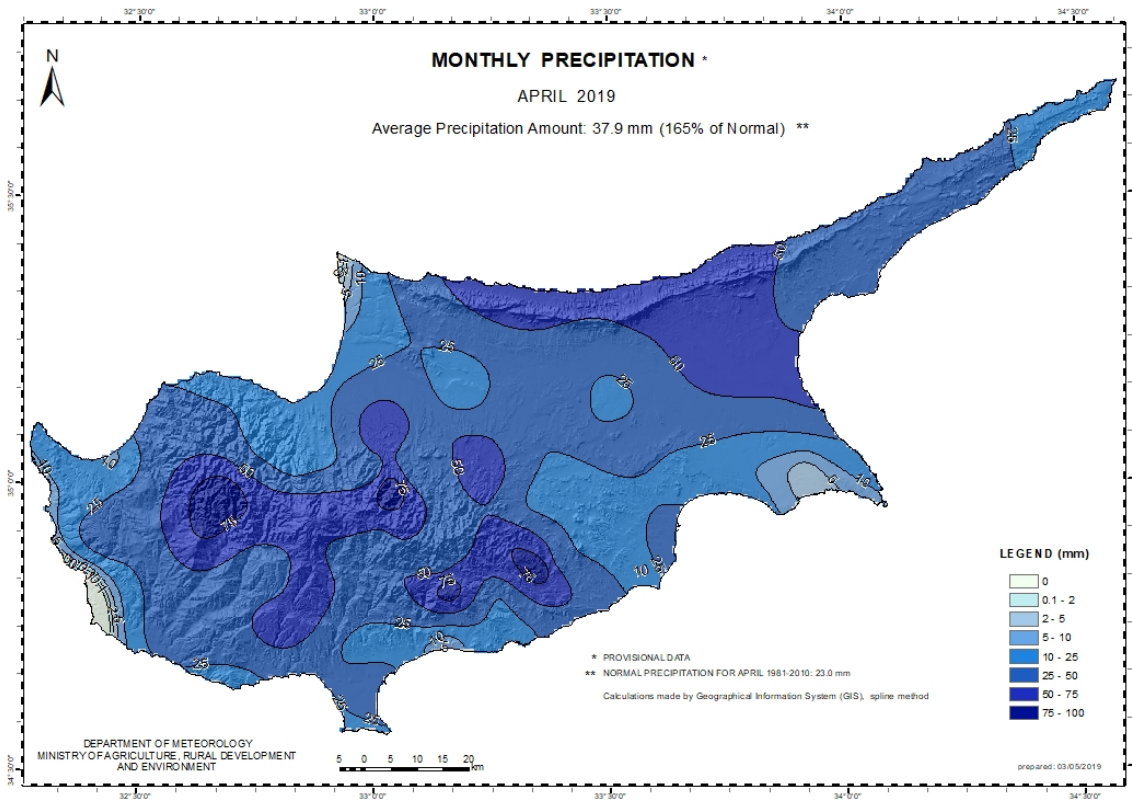
Based on the provisional data, snowfall was recorded during on the 16th, 18th, 19th, 20th and 21st of **April**. It must be mentioned that snow is not frequent during April and climatologically light snow accumulations are recorded rarely during **April**.

TEMPERATURE AND PRECIPITATION PROVISIONAL DATA FOR APRIL 2019														
St. No.	Station Name	Mean Daily Maximum Temperature (°C)	Normal Value (1981-2010)	Difference from Normal Value	Highest Daily Maximum Temperature (°C)	Lowest Daily Maximum Temperature (°C)	Mean Daily Minimum Temperature (°C)	Normal Value (1981-2010)	Difference from Normal Value	Lowest Daily Minimum Temperature (°C)	Highest Daily Minimum Temperature (°C)	Monthly Total Precipitation (mm)	Normal Value (1981-2010)	Difference from Normal Value
		41	POLIS CHRYSOCHOUS	20.8	21.6	-0.8	25.7	17.7	10.7	10.8	-0.1	5.2	13.7	7.3
82*	PAFOS (AIRPORT)	21.3	21.5	-0.2	25.9	18.7	11.6	11.5	0.1	7.7	19.6	10.0	15.2	-5.2
225	PRODROMOS (C.F.C.)	14.0	15.5	-1.5	22.6	5.9	4.7	6.6	-1.9	-3.1	13.0	70.9	47.2	23.7
666*	ATHALASSA (RADIOSONDE)	24.1	24.4	-0.3	32.1	18.2	9.8	10.4	-0.6	6.1	15.4	32.9	19.1	13.8
731	LARNAKA (AIRPORT)	22.2	22.7	-0.5	29.4	19.1	11.6	11.8	-0.2	7.3	17.4	38.6	14.2	24.4
800**	ACHNA (DASAKI)	22.1	23.2	-1.1	30.8	17.5	9.8	10.9	-1.1	5.3	18.2	13.0	19.7	-6.7

* Pafos' and Athalassa's Station Normal Values cover the period 1983-2010
** Achna's Temperature Normal Values cover the period 1981-2007

= VALUES FROM AUTOMATIC WEATHER STATION

For better visualization of **April** accumulated precipitation, a chart of Cyprus with the total preliminary accumulated precipitation is presented.



A Cyprus chart with the normal (period 1981 to 2010) accumulated precipitation for the month of **April** is also presented.

