

Seasonal weather forecast for the months of June, July and August 2019

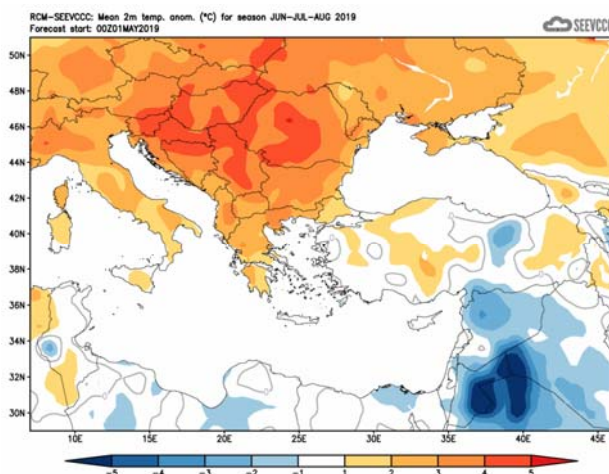
General over view of the weather expected to prevail for June, July and August.

The weather for the following three months, namely **June, July and August 2019**, will be presented, with respect to the anomalies of temperature, and accumulated precipitation.

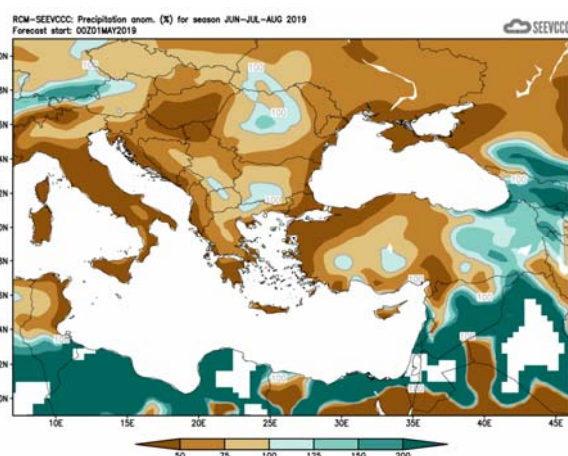
Normal temperatures (both maximum and minimum), are on the rise suggesting the second half of the period as the hottest period of the year. The accumulated precipitation is at its lowest values. The period of the following three months is likely to be characterized by outbreaks of thunderstorms, initiated from thermal causes over the main plain area or over the mountainous range from orographic uplift.

Specifically, regarding the seasonal forecast for the period of **June, July and August 2019**, the temperature will be generally normal. That means that the mean temperature will be around normal and does not exclude days with temperatures well above normal. Normal temperature characterizes also the greater part of Asia Minor, while the Balkans will be warmer than normal and near East will be lower than normal.

Regarding the seasonal forecast, based on the climatology of the island, the accumulated precipitation is expected to be below normal (as shown in the tables below). Any precipitation in Cyprus will be a result of thermal instability, in the form of a thunderstorm, with very local and temporal characteristics. For the above reason, but also due to the inability of the seasonal model to estimate precipitation for the region of Cyprus due to thermal instability, no extended comment will be made.



Divergence of temperature from normal from the mean seasonal temperature ($^{\circ}\text{C}$) for June, July and August

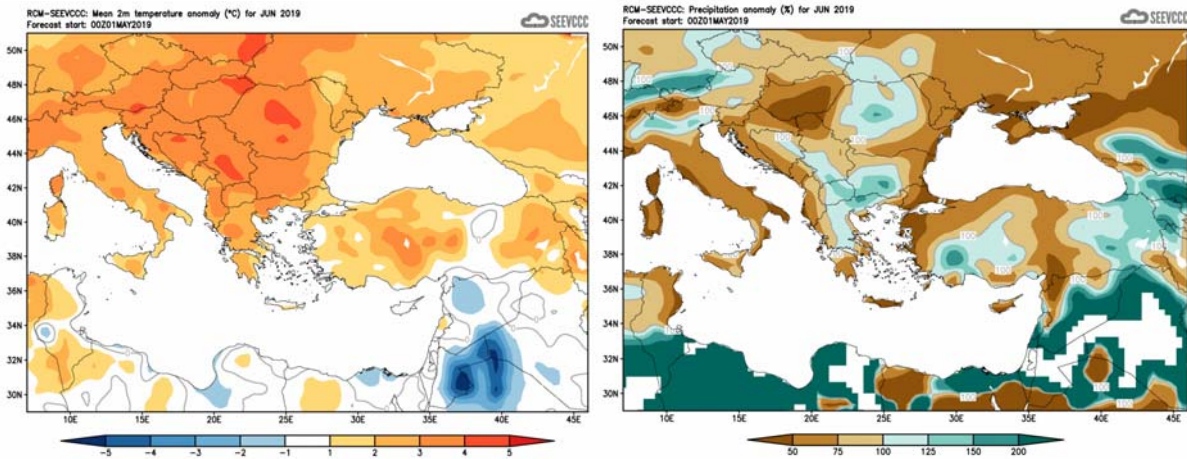


Percentage (%) of the mean seasonal accumulated precipitation compared to the mean normal for June, July and August

The seasonal monthly forecast in detail

June

The seasonal forecast suggests that **June's** temperature will be generally normal while the Balkans and Middle East will be warmer than normal. Regarding the accumulated precipitation Cyprus is expected to be dry without the occurrence of dynamic barometric weather systems.

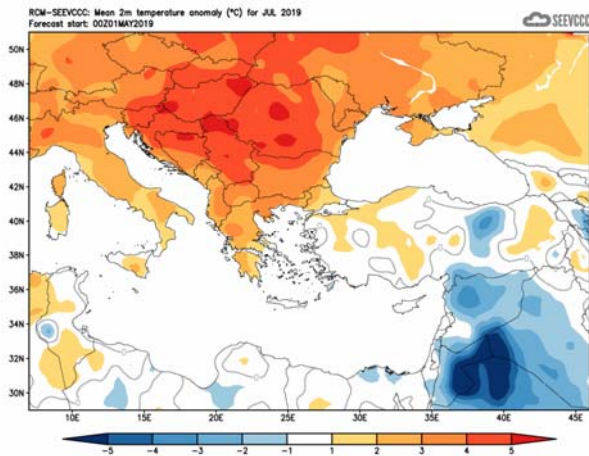


Divergence of the mean monthly temperature (°C)
from normal during June

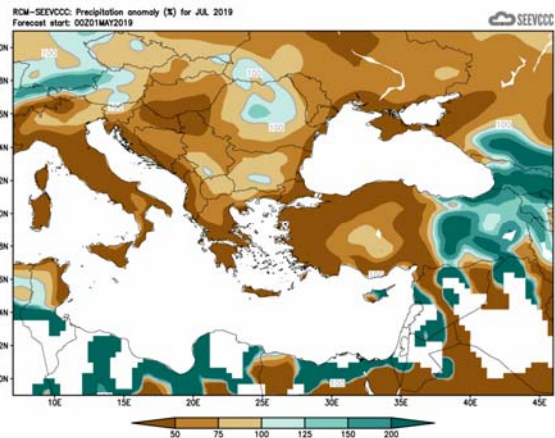
Percentage of the mean monthly precipitation (%)
compared with the normal of June

July

The seasonal forecast suggests that **July's** temperature will be again normal. The accumulated precipitation at west part of Cyprus is expected to be low but over the east part and inland the accumulated precipitation is expected to be normal and higher than normal, respectively. Bearing always in mind that the normal accumulation for July is very low especially for the main plain and coastal areas



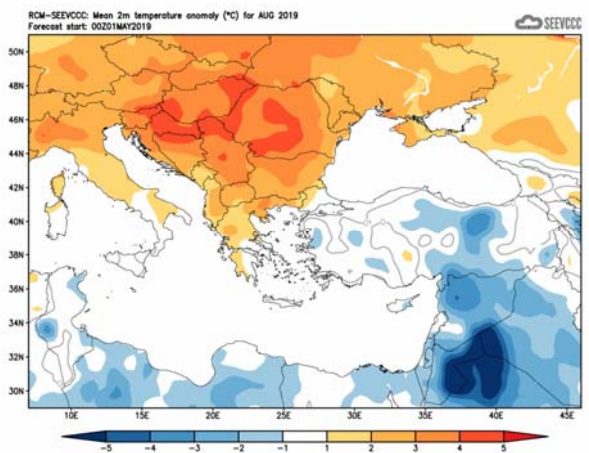
Divergence of the mean monthly temperature (°C) from normal during July



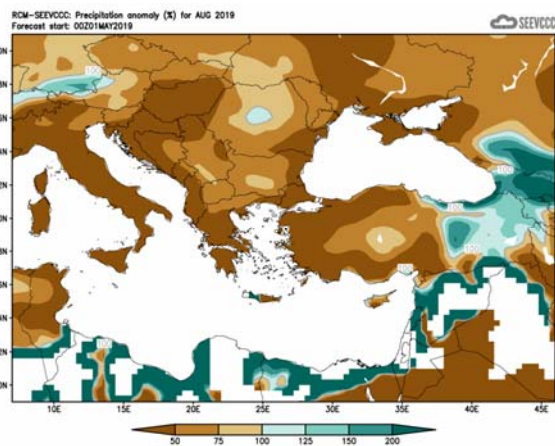
Percentage of the mean monthly precipitation (%) compared with the normal of July

August

The seasonal forecast suggests that **August's** temperature will be generally normal except the southeastern part where the temperature will be by 1 to 2°C above normal. The accumulated precipitation is expected to be low, bearing again in mind that the normal accumulation for August is very low especially for the main plain areas.



Divergence of the mean monthly temperature (°C) from normal during August



Percentage of the mean monthly precipitation (%) compared with the normal of August

Normal values of temperature (mean maximum and mean minimum) and accumulated precipitation for June, July and August

The normal values of mean maximum, mean minimum temperature and accumulated precipitation are presented below concerning the three months the period of forecast is covering, in order to gain a better view of the normal seasonal climate. The period of forecast is the transitional summer. The temperature, both maximum and minimum, is on the rise with **July's** temperature significantly higher. Climatologically extreme high temperatures are recorded during **July** and over some areas during **August**. On the other hand the accumulated precipitation is declining, as presented by the climatological data shown on the table below. Thundery activity is likely during afternoon hours mainly inland and over the mountains, which is noted also from the table below. Note the cause of the mountainous area of Troodos range over the accumulated precipitation, mainly as a result of thundery activity, which is affecting primarily the mountainous ranges of the island. The accumulated precipitation over Prodromos station although declining towards **August** is always significantly higher, if compared to the accumulated precipitation of the other selected stations.

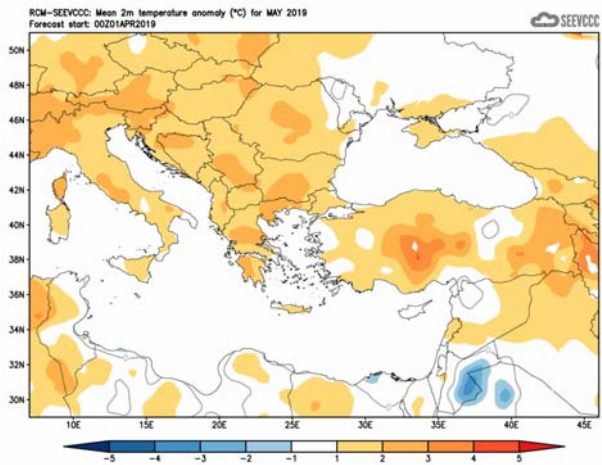
TEMPERATURE AND PRECIPITATION NORMAL VALUES FOR THE PERIOD 1981-2010									
Area Name	MEAN DAILY MAXIMUM TEMPERATURE (°C)			MEAN DAILY MINIMUM TEMPERATURE (°C)			MEAN MONTHLY TOTAL PRECIPITATION (mm)		
	June	July	August	June	July	August	June	July	August
NORTH COAST	30.3	33.4	33.3	18.5	21.1	21.5	1.8	0.1	0.0
WEST COAST*	27.6	29.9	30.5	18.0	20.6	21.1	1.3	0.2	0.0
MOUNTAINOUS AREAS	29.0	27.9	28.0	15.0	18.2	18.1	27.2	16.4	12.0
INLAND*	34.0	37.1	36.9	19.1	22.1	21.9	11.6	4.2	1.8
SOUTH COAST	30.2	32.5	32.9	19.4	22.0	22.3	2.0	0.5	0.3
EAST COAST**	31.0	33.2	33.5	18.9	21.8	22.0	1.8	0.1	0.1

* West Coast and Inland Values cover the period 1983-2010

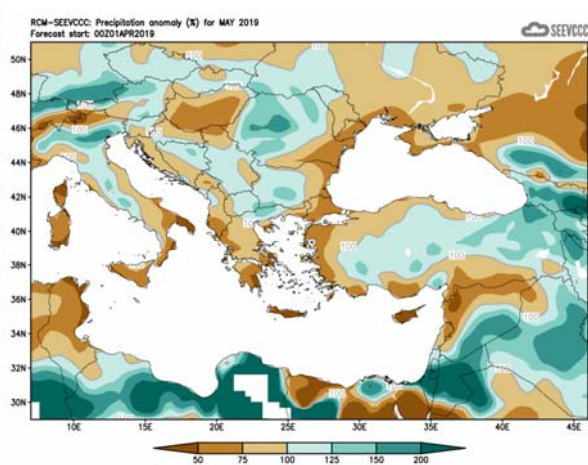
** East Coast Temperature Values cover the period 1981-2007

Evaluation of Mays seasonal forecast for the area of Cyprus

The seasonal forecast suggested that **May's** temperature would be generally normal while it would be normal to slightly above normal over the western part. Regarding the accumulated precipitation was expected to range below 50% of normal.



Divergence of the mean monthly temperature (°C) from normal during May



Percentage of the mean monthly precipitation (%) compared with the normal of May

Concerning the models' evaluation for **May**, a general judgment is that it performed moderate to below moderate regarding the temperature but regarding the accumulated precipitation it performed well.

In a more detailed evaluation of the recorded temperatures both maximum and minimum (table below) were above normal. As an example is Athalassa station with a month's absolute maximum of 42.1°C and Prodromos with 32.7°C, with the normal being respectively 29.6°C and 20.4°C. Extreme minimums with positive departure from normal were also recorded like the Athalassa highest minimum of 24.8°C and Prodromos 20.3°C with the normal being respectively 14.8°C and 10.8°C.

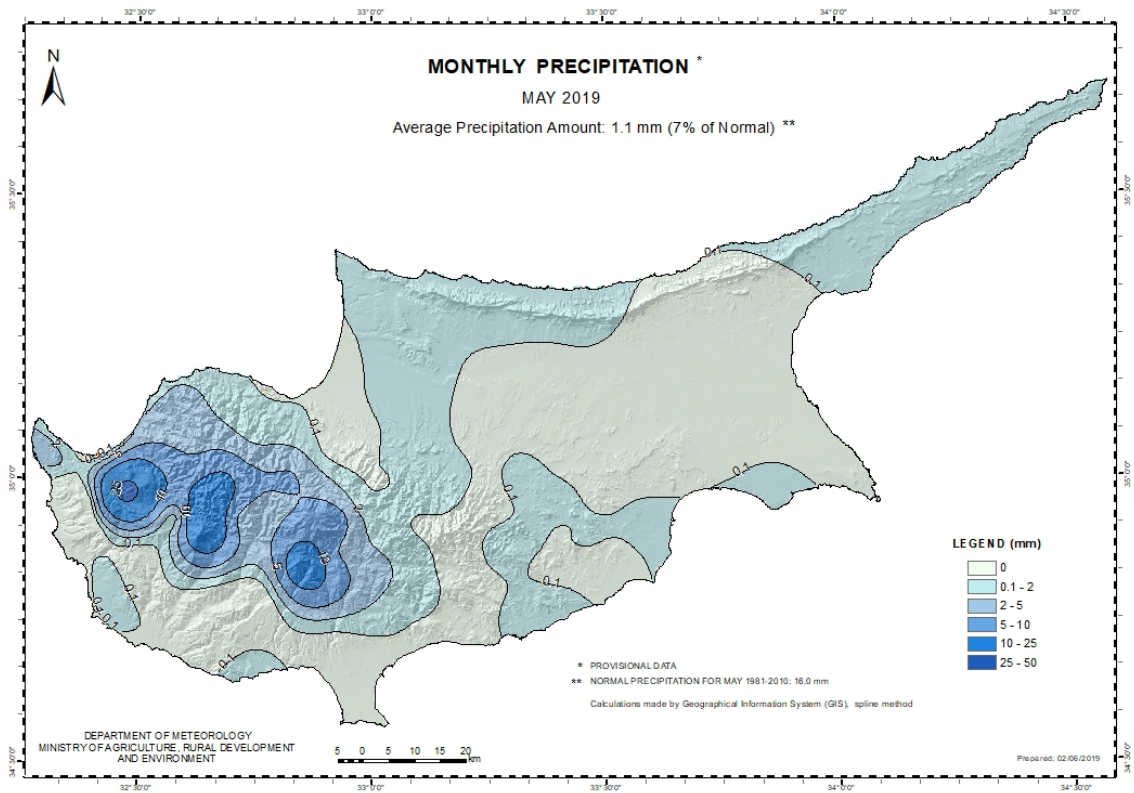
From the distribution (provisional accumulated precipitation chart) of the accumulated precipitation of the month the mean surface distribution was below normal, reaching 1.1 mm or 7% of normal, as the model suggested. The days with precipitation were the 1st, 7th, 9th and 12th of **May**.

TEMPERATURE AND PRECIPITATION PROVISIONAL DATA FOR MAY 2019														
St. No.	Station Name	Mean Daily Maximum Temperature (°C)	Normal Value (1981-2010)	Difference from Normal Value	Highest Daily Maximum Temperature (°C)	Lowest Daily Maximum Temperature (°C)	Mean Daily Minimum Temperature (°C)	Normal Value (1981-2010)	Difference from Normal Value	Lowest Daily Minimum Temperature (°C)	Highest Daily Minimum Temperature (°C)	Monthly Total Precipitation (mm)	Normal Value (1981-2010)	Difference from Normal Value
41	POLIS CHRYSOCHOUS	26.8	25.8	1.0	36.6	22.1	15.3	14.3	1.0	11.2	21.0	0.7	7.6	-6.9
82*	PAFOS (AIRPORT)	25.6	24.5	1.1	31.2	21.8	15.3	14.7	0.6	11.4	20.6	0.0	6.1	-6.1
225	PRODROMOS (C.F.C.)	23.9	20.4	3.5	32.7	13.3	12.2	10.8	1.4	3.5	20.3	4.8	32.0	-27.2
666*	ATHALASSA (RADIOSONDE)	33.0	29.6	3.4	42.1	23.9	15.6	14.8	0.8	9.1	24.8	0.0	24.6	-24.6
731	LARNAKA (AIRPORT)	28.5	26.4	2.1	35.4	22.6	17.0	15.7	1.3	11.0	23.3	0.4	9.8	-9.4
800**	ACHNA (DASAKI)	29.5	27.4	2.1	36.9	22.6	15.2	14.9	0.3	9.7	22.0	0.0	10.7	-10.7

* Pafos' and Athalassa's Station Normal Values cover the period 1983-2010
 ** Achna's Temperature Normal Values cover the period 1981-2007

= VALUES FROM AUTOMATIC WEATHER STATION

For the purpose of better visualization of **May** accumulated precipitation, a chart of Cyprus with the total preliminary accumulated precipitation is presented.



A Cyprus chart with the normal (period 1981 to 2010) accumulated precipitation for the month of **May** is also presented.

