

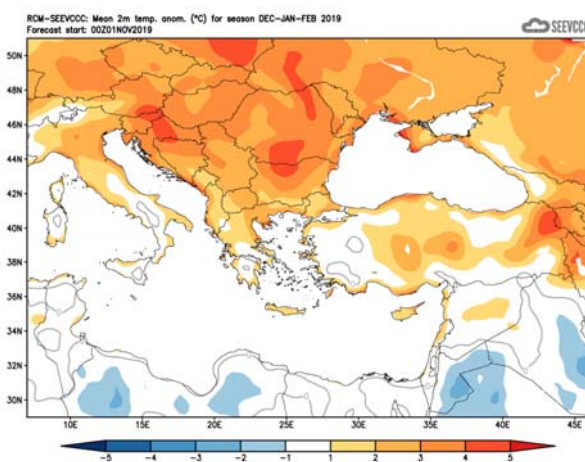
Seasonal weather forecast for the months of December 2019 and January and February 2020

General over view of the weather expected to prevail during December 2019 and January and February 2020.

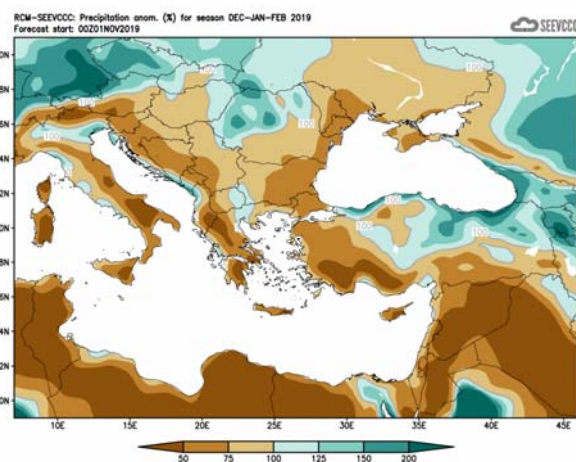
The following period consists the traditional winter, where the most of the annual accumulated precipitation is climatologically expected while in the period in focus normal temperatures (both maximum and minimum) are significantly lower than the other months of the year. During the period the frequency of baroclinic depressions affecting the area is at its most resulting in higher accumulated precipitation amounts.

Seasonal forecast for the next three months

Specifically, regarding the seasonal forecast for the period of **December 2019** and **January** and **February 2020**, the temperature is expected to be generally slightly above normal. Normal to above normal temperature characterizes also Asia Minor and the Balkans. The amount of the accumulated precipitation inland and over the southern and eastern part of Cyprus is expected to range generally from 50% to 75% of normal while over the southeast part will range below 50% of normal.



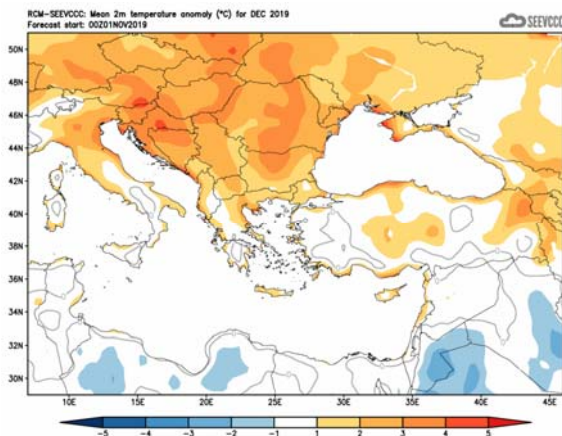
Divergence of temperature from normal from the mean seasonal temperature (°C) for December, January and February



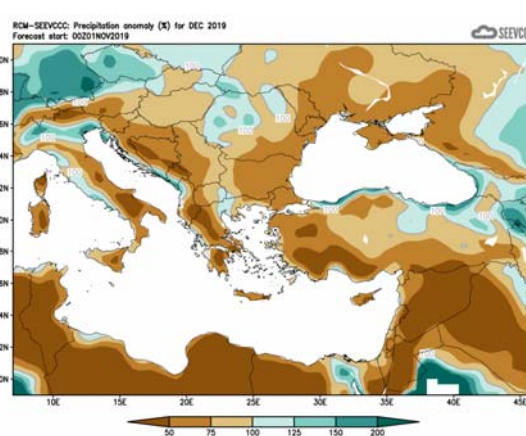
Percentage (%) of the mean seasonal accumulated precipitation compared to the mean normal for December, January and February

Seasonal forecast in detail

The seasonal forecast for **December 2019** suggests that temperature will be above normal (by 1°C to 2°C) mainly over coastal areas. The accumulated precipitation of **December** is forecasted to be disappointing since it suggests a mainly dry month with accumulation ranging only from 50% to 75% of normal, except the south eastern coastal parts where the accumulation will range below 50% of normal. Low accumulations characterize all the surrounding area.

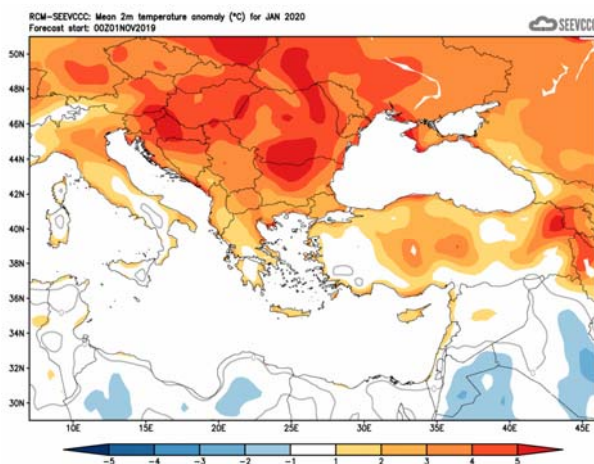


Divergence of the mean monthly temperature (°C) from normal during December

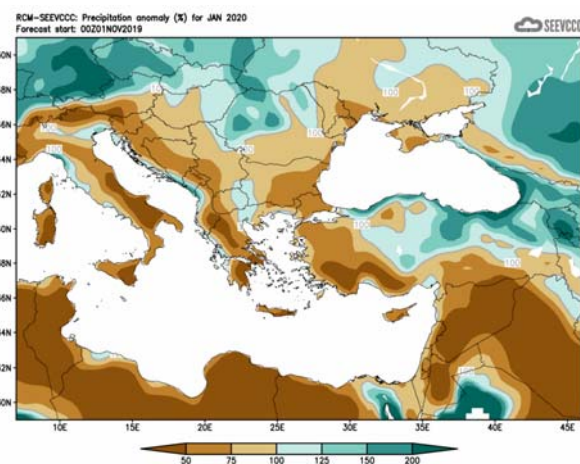


Percentage of the mean monthly precipitation (%) compared with the normal of December

The seasonal forecast for **January 2020** suggests that temperature will be above normal (by 1°C to 2°C). The forecast of **January** for the accumulated precipitation suggests that the accumulation will range between from 50% to 75% of normal all over the island, except the south eastern coastal parts where the accumulation will range below 50% of normal. Low accumulations characterize almost all the surrounding area.

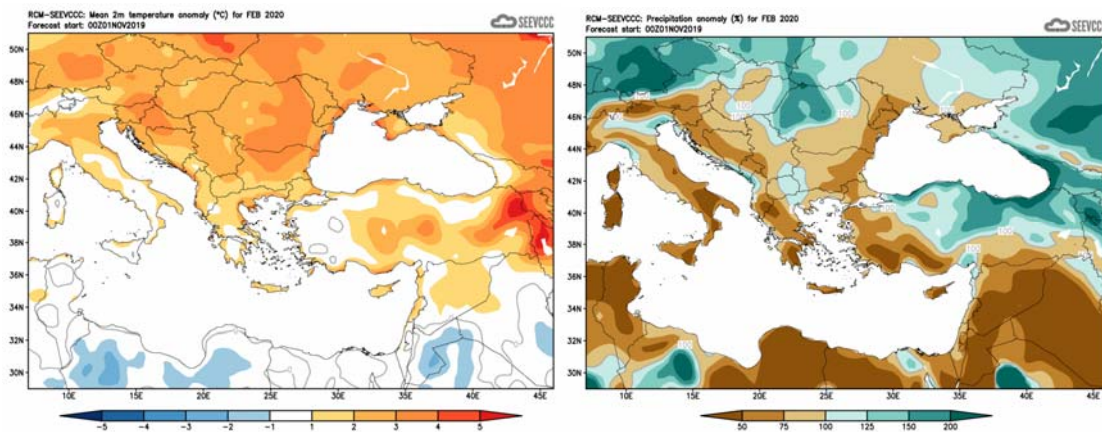


Divergence of the mean monthly temperature (°C) from normal during January



Percentage of the mean monthly precipitation (%) compared with the normal of January

The seasonal forecast for **February 2020** is almost similar to the one of January and it will be warmer than normal by 1°C to 2°C. The accumulated precipitation of **February** forecast suggests that the accumulation will range between from 50% to 75% of normal all over the island, except the south eastern coastal parts where the accumulation will range below 50%of normal. Low accumulations are characterizing great parts of the surrounding area.



Divergence of the mean monthly temperature (°C) from normal during February

Percentage of the mean monthly precipitation (%) compared with the normal of February

Normal values of temperature (mean maximum and mean minimum) and accumulated precipitation for December 2019 and January and February 2020

The normal values of mean maximum, mean minimum temperature and accumulated precipitation are presented below concerning the three months the period of forecast is covering, in order to gain a better view of the normal seasonal climate. The temperatures, both maximum and minimum, are the lowest climatological temperatures of the year while the accumulated precipitation has the greater amount of the year, as a result of the increased frequency of reoccurrence/redeveloping of depressions over the area of the east Mediterranean.

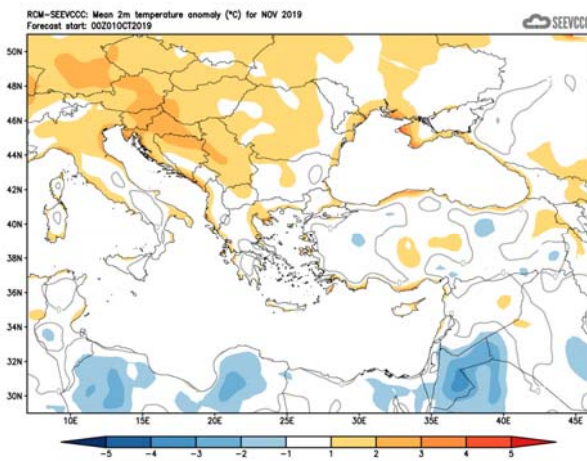
TEMPERATURE AND PRECIPITATION NORMAL VALUES FOR THE PERIOD 1981-2010									
Area Name	MEAN DAILY MAXIMUM TEMPERATURE (°C)			MEAN DAILY MINIMUM TEMPERATURE (°C)			MEAN MONTHLY TOTAL PRECIPITATION (mm)		
	December	January	February	December	January	February	December	January	February
NORTH COAST	18.0	16.3	16.3	9.3	7.6	7.3	93.6	85.3	68.5
WEST COAST*	18.9	17.1	17.1	10.0	8.3	8.1	90.1	78.8	59.8
MOUNTAINOUS AREAS	8.3	6.3	6.7	2.6	0.7	0.5	157.3	150.0	128.7
INLAND*	17.3	15.5	16.0	7.0	5.4	5.3	57.2	48.8	44.5
SOUTH COAST	18.6	16.8	17.0	9.2	7.5	7.1	79.0	73.7	50.3
EAST COAST**	18.0	16.3	16.5	8.3	6.6	6.3	76.8	67.3	50.7

* West Coast and Inland Values cover the period 1983-2010

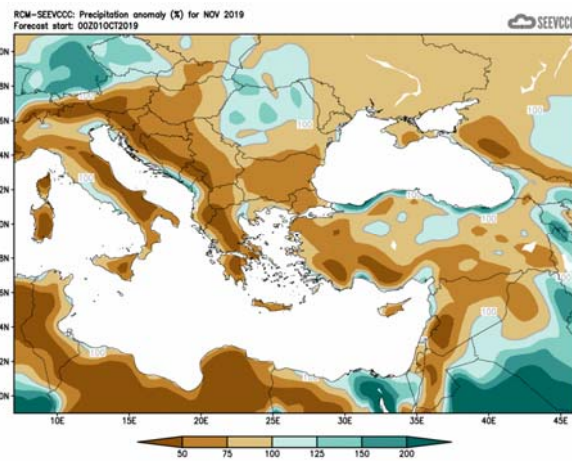
** East Coast Temperature Values cover the period 1981-2007

Evaluation of November's seasonal forecast for the area of Cyprus

The seasonal forecast for **November** suggested that the mean temperature for the island would be generally normal, such as the mean monthly temperature of the surrounding area. The amount of the accumulated precipitation over inland and the southeast coast of Cyprus was expected to range generally from 50% to 75% of normal while over the rest of the island was expected to range from 75% of normal to normal. Parts of the coastal zone of the surrounding area would receive again high precipitation accumulation.



Divergence of the mean monthly temperature (°C) from normal during November



Percentage of the mean monthly precipitation (%) compared with the normal of November

From the provisional data recorded by the Department of Meteorology, for the selected portion of the meteorological stations, which are presented in the table below,

TEMPERATURE AND PRECIPITATION PROVISIONAL DATA FOR NOVEMBER 2019														
St. No.	Station Name	Mean Daily Maximum Temperature (°C)	Normal Value (1981-2010)	Difference from Normal Value	Highest Daily Maximum Temperature (°C)	Lowest Daily Maximum Temperature (°C)	Mean Daily Minimum Temperature (°C)	Normal Value (1981-2010)	Difference from Normal Value	Lowest Daily Minimum Temperature (°C)	Highest Daily Minimum Temperature (°C)	Monthly Total Precipitation (mm)	Normal Value (1981-2010)	Difference from Normal Value
41	POLIS CHRYSOCHOUS	25.3	21.7	3.6	29.6	20.6	13.9	12.2	1.7	10.0	17.3	15.0	58.6	-43.6
82*	PAFOS (AIRPORT)	25.6	22.4	3.2	29.9	21.2	15.3	12.9	2.4	11.1	17.9	10.1	52.6	-42.5
225	PRODROMOS (C.F.C.)	16.9	12.8	4.1	23.0	8.2	8.1	6.1	2.0	4.1	12.9	24.2	93.8	-69.6
666*	ATHALASSA (RADIOSONDE)	26.4	22.1	4.3	30.1	20.8	11.8	10.4	1.4	7.3	16.7	10.6	43.2	-32.6
731	LARNAKA (AIRPORT)	25.9	22.6	3.3	28.9	22.6	16.0	12.4	3.6	11.5	19.9	7.0	46.8	-39.8
800**	ACHNA (DASAKI)	25.3	22.4	2.9	28.6	20.0	14.4	11.8	2.6	8.8	19.1	13.2	44.0	-30.8

* Pafos' and Athalassa's Station Normal Values cover the period 1983-2010
** Achna's Temperature Normal Values cover the period 1981-2007

= VALUES FROM AUTOMATIC WEATHER STATION

is evident that the model did not perform well concerning the temperature anomalies, since both mean daily maximum temperatures and mean daily minimum temperatures were recorded above normal.

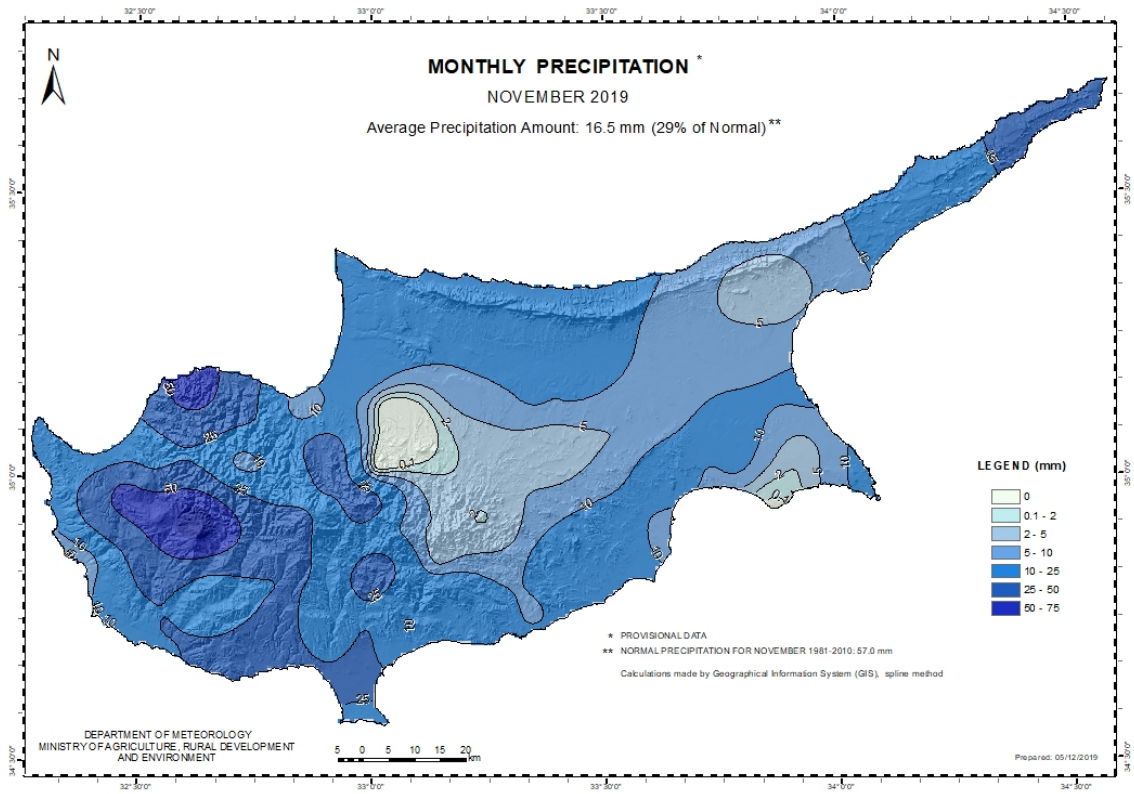
Extremes were recorded with positive departures greater than 4°C, like Prodrornos station where the highest daily maximum temperature (23.0°C) was 10.2°C greater than normal (12.8°C) and like Athalassa station, where the highest daily maximum temperature (30.1°C) was 8°C greater than normal (22.1°C).

As regarding the accumulated precipitation **November**, the accumulated precipitation was below normal, while again it wasn't well forecasted by the model. Notice from the following accumulated precipitation chart for November the western part of Cyprus received more accumulated precipitation than the eastern part. On the 8th and during the period 13-29 of **November** local showers and isolated showers resulted in accumulated precipitation of 29% of normal.

It is worth mentioning that on the 16th and during the periods 19-24 and on the 27th of **November** hail was reported.

Also, for the 15th, 26th and 27th of **November** EMMA yellow warning for showers and thunderstorms were issued.

For the purpose of better visualization of **November** accumulated precipitation, a chart of Cyprus with the total preliminary accumulated precipitation is presented.



A Cyprus chart with the normal (period 1981 to 2010) accumulated precipitation for the month of **November** is also presented.

