

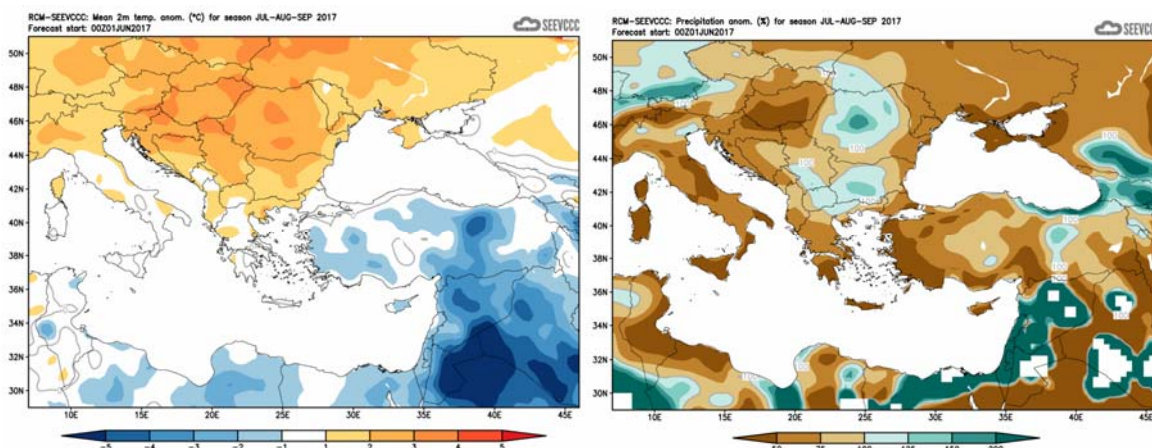
Seasonal weather forecast for the months of

July, August and September 2017

General over view of the weather expected to prevail for July, August and September.

The weather for the following three months, namely **July, August and September 2017**, will be presented, with respect to the anomalies of temperature, and accumulated precipitation. Normal temperatures (both maximum and minimum), are on the rise suggesting **August** as the hottest month of the year. The accumulated precipitation is at its lowest values. The period of the following three months (mainly July and August) is likely to be characterized by outbreaks of thunderstorms, initiated from thermal causes over the main plain area or over the mountainous range from orographic uplift.

Specifically, regarding the seasonal forecast for the period of **July, August and September 2017**, the temperature will be generally normal to lower than normal. Normal to lower than normal temperature characterizes also the greater part of Asia Minor, while the Balkans will be warmer than normal and near East will be again lower than normal. The amount of the accumulated precipitation over Cyprus is expected to range generally from 50% to 75% of normal while over the south part will be below 50% of normal.

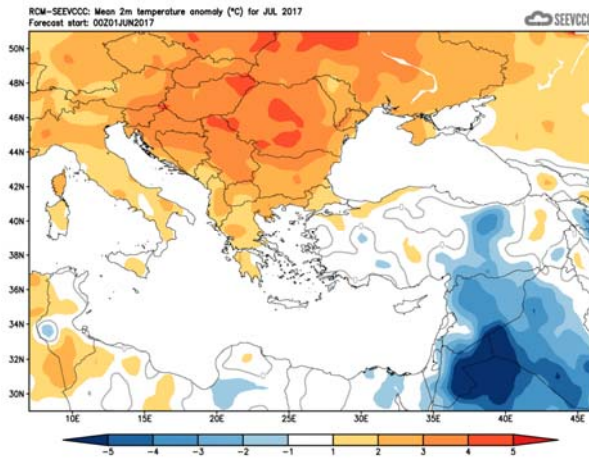


Divergence of temperature from normal from the mean seasonal temperature (°C) for July, August and September

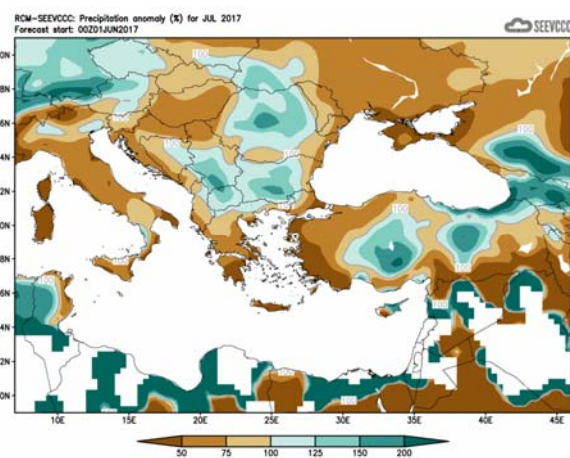
Percentage (%) of the mean seasonal accumulated precipitation compared to the mean normal for July, August and September

The seasonal monthly forecast in detail

The seasonal forecast suggests that **July's** temperature will be normal alike Asia Minor. Regarding the accumulated precipitation Cyprus west part is expected to be below 50% of normal but over the east part accumulated precipitation is expected to range up to 200% of normal.

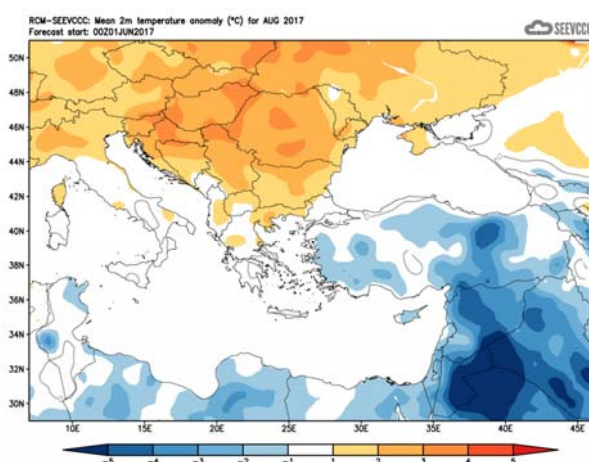


Divergence of the mean monthly temperature (°C) from normal during July

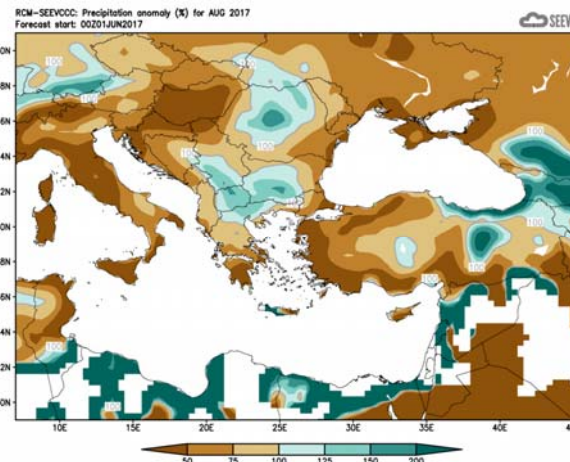


Percentage of the mean monthly precipitation (%) compared with the normal of July

August's seasonal forecast suggests that temperature will be generally below normal, by 1 to 2°C, except the extreme west part where it will be normal. Regarding the accumulated precipitation Cyprus will be again with the accumulated precipitation below 50% of normal except the northwest part where a range up to normal is likely.

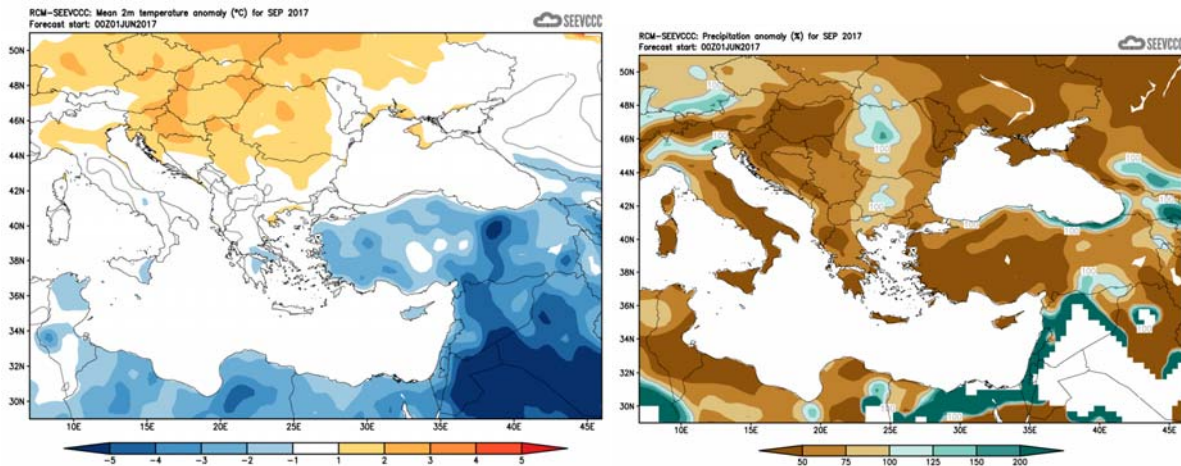


Divergence of the mean monthly temperature (°C) from normal during August



Percentage of the mean monthly precipitation (%) compared with the normal of August

The seasonal forecast suggests that **September's** temperature will be generally below normal, by 1 to 2°C. The below normal temperature is also a characteristic of the area of Asia Minor and Near and Middle East. Regarding the accumulated precipitation Cyprus will be again with the accumulated precipitation ranging below 50% of normal. A dry characteristic has also the entire area of Asia Minor and Southern Balkans, while Near East is expected to be significantly above normal.



Divergence of the mean monthly temperature (°C) from normal during September

Percentage of the mean monthly precipitation (%) compared with the normal of September

Normal values of temperature and accumulated precipitation for July, August and September 2017

The normal values of mean maximum, mean minimum temperature and accumulated precipitation are presented below concerning the three months the period of forecast is covering, in order to gain a better view of the normal seasonal climate. The temperature, both maximum and minimum, is on the rise with **July's** and **August's** temperature significantly higher than **September's**. On the other hand the accumulated precipitation is declining during **July** and **August**, as presented by the climatological data shown on the table below. Thundery activity is likely during afternoon hours mainly inland and over the mountains, which is noted also from the table below. Note the cause of the mountainous area of Troodos range over the accumulated precipitation, mainly as a result of thundery activity, which is affecting primarily the mountainous ranges of the island. The accumulated precipitation over Prodromos station although declining towards **September** is always significantly higher, if compared to the accumulated precipitation of the other selected stations. It is worth noting that during September accumulated precipitation starts a rise in all selected stations.

| TEMPERATURE AND PRECIPITATION NORMAL VALUES FOR THE PERIOD 1981-2010 | | | | | | | | | |
|--|-------------------------------------|--------|-----------|-------------------------------------|--------|-----------|---------------------------------------|--------|-----------|
| Area Name | MEAN DAILY MAXIMUM TEMPERATURE (°C) | | | MEAN DAILY MINIMUM TEMPERATURE (°C) | | | MEAN MONTHLY TOTAL PRECIPITATION (mm) | | |
| | July | August | September | July | August | September | July | August | September |
| NORTH COAST | 33.4 | 33.3 | 30.1 | 21.1 | 21.5 | 19.2 | 0.1 | 0.0 | 4.0 |
| WEST COAST* | 29.9 | 30.5 | 29.0 | 20.6 | 21.1 | 19.1 | 0.2 | 0.0 | 3.6 |
| MOUNTAINOUS AREAS | 27.9 | 28.0 | 24.6 | 18.2 | 18.1 | 14.9 | 16.4 | 12.0 | 10.7 |
| INLAND* | 37.1 | 36.9 | 33.6 | 22.1 | 21.9 | 18.8 | 4.2 | 1.8 | 12.2 |
| SOUTH COAST | 32.5 | 32.9 | 30.9 | 22.0 | 22.3 | 19.8 | 0.5 | 0.3 | 4.3 |
| EAST COAST** | 33.2 | 33.5 | 31.9 | 21.8 | 22.0 | 19.6 | 0.1 | 0.1 | 2.9 |

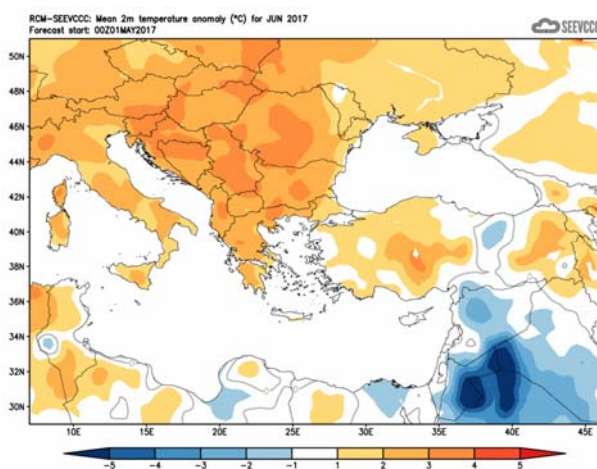
* West Coast and Inland Values cover the period 1983-2010

** East Coast Temperature Values cover the period 1981-2007

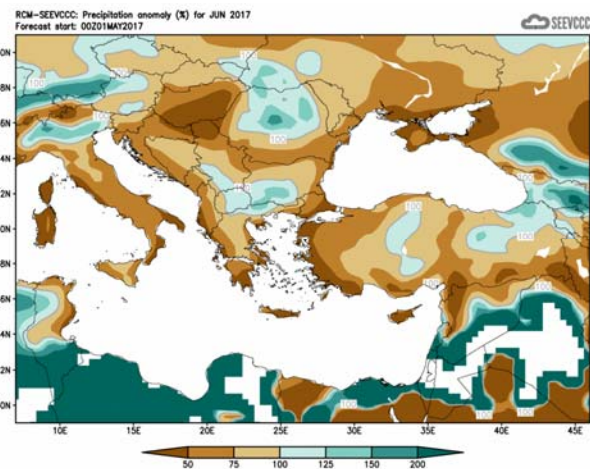
Evaluation of Junes seasonal forecast for the area of Cyprus

June

The seasonal forecast suggested that **June's** temperature would be generally normal while the Balkans and great parts of Asia Minor would be warmer than normal. Regarding the accumulated precipitation Cyprus was expected to be dry with the accumulated precipitation ranging below 50% for the entire area of Cyprus.



Divergence of the mean monthly temperature (°C) from normal during June



Percentage of the mean monthly precipitation (%) compared with the normal of June

Concerning the models evaluation for **June**, a general judgment is that the model performed well both qualitatively and quantitatively concerning the temperature and relatively poor in forecasting the seasonal accumulated precipitation. It must be mentioned that during summer month's precipitation is resulted mainly from thundery activity which has very localised characteristics and that judging is very difficult due to models limitations.

In a more detailed evaluation of the recorded temperatures both maximum and minimum (table below) were around normal, suggesting that **June** was normal. Extremes were also recorded with great positive departures of 6 to 8°C, like Polis Chrysochou station where the highest daily maximum temperature (37.8°C) was 8°C greater than normal (29.8°C) and Athalassa station, where the highest daily maximum temperature (41°C) was 6.1°C greater than normal (34.9°C). During 25-30 of **June** 5 EMMA warnings with yellow awareness level were issued, concerning extreme high temperatures, not only maximum but also minimum temperatures.

Lowest daily minimum temperatures were also recorded, with positive departures of 5 to 7°C above normal, like Pafos airport, where a minimum of 23.9°C was by 5.9°C above station's normal (18.0°C) and the station of Athalassa, where a minimum of 26.1°C was by 7°C above station's normal (19.1°C).

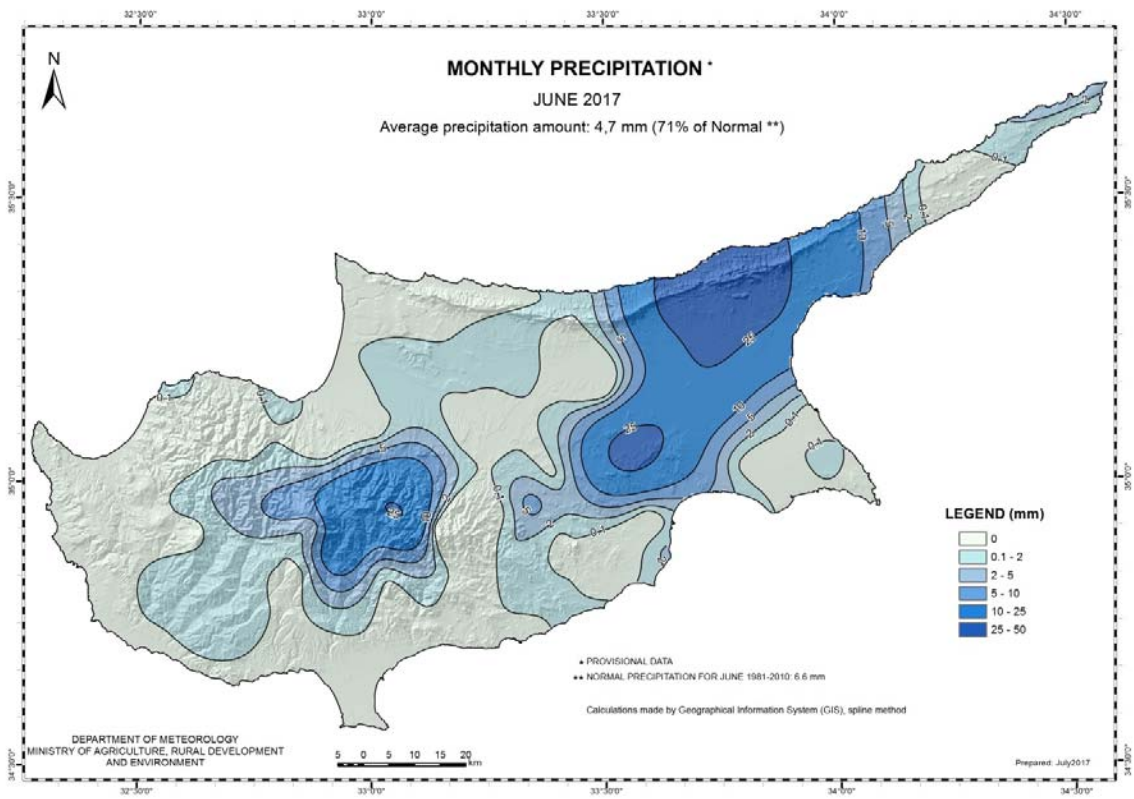
During **June** local showers and or thunderstorms caused by thermal instability were recorded on 19th and on 21st of **June** resulting in accumulated precipitation of 71% of normal. It is worth mentioning that from the provisional data on the 21st of the month hail was reported.

| TEMPERATURE AND PRECIPITATION PROVISIONAL DATA FOR JUNE 2017 | | | | | | | | | | | | | | |
|--|------------------------|-------------------------------------|--------------------------|------------------------------|--|---------------------------------------|-------------------------------------|--------------------------|------------------------------|---------------------------------------|--|----------------------------------|--------------------------|------------------------------|
| St. No. | Station Name | Mean Daily Maximum Temperature (°C) | Normal Value (1981-2010) | Difference from Normal Value | Highest Daily Maximum Temperature (°C) | Lowest Daily Maximum Temperature (°C) | Mean Daily Minimum Temperature (°C) | Normal Value (1981-2010) | Difference from Normal Value | Lowest Daily Minimum Temperature (°C) | Highest Daily Minimum Temperature (°C) | Monthly Total Precipitation (mm) | Normal Value (1981-2010) | Difference from Normal Value |
| 41 | POLIS CHRYSOCHOUS | 29.8 | 30.3 | -0.5 | 37.8 | 25.7 | 18.4 | 18.5 | -0.1 | 15.3 | 21.9 | 0.0 | 1.8 | -1.8 |
| 82* | PAFOS (AIRPORT) | 28.5 | 27.6 | 0.9 | 31.3 | 26.2 | 18.4 | 18.0 | 0.4 | 15.5 | 23.9 | 0.0 | 1.3 | -1.3 |
| 225 | PRODROMOS (C.F.C.) | - | 25.0 | - | - | - | - | 15.0 | - | - | - | 7.5 | 27.2 | -19.7 |
| 666* | ATHALASSA (RADIOSONDE) | 34.9 | 34.0 | 0.9 | 41.0 | 29.8 | 20.3 | 19.1 | 1.2 | 16.8 | 26.1 | 0.0 | 11.6 | -11.6 |
| 731 | LARNAKA (AIRPORT) | 30.7 | 30.2 | 0.5 | 34.4 | 27.3 | 20.0 | 19.4 | 0.6 | 16.7 | 22.7 | 2.0 | 2.0 | 0.0 |
| 800** | ACHNA (DASAKI) | 30.6 | 31.0 | -0.4 | 35.7 | 27.6 | 19.0 | 18.9 | 0.1 | 15.4 | 23.1 | 0.8 | 1.8 | -1.0 |

* Pafos' and Athalassa's Station Normal Values cover the period 1983-2010
** Achna's Temperature Normal Values cover the period 1981-2007

= VALUES FROM AUTOMATIC WEATHER STATION

For the purpose of better visualization of **June** accumulated precipitation, a chart of Cyprus with the total preliminary accumulated precipitation is presented.



A Cyprus chart with the normal (period 1981 to 2010) accumulated precipitation for the month of **June** is also presented.

