

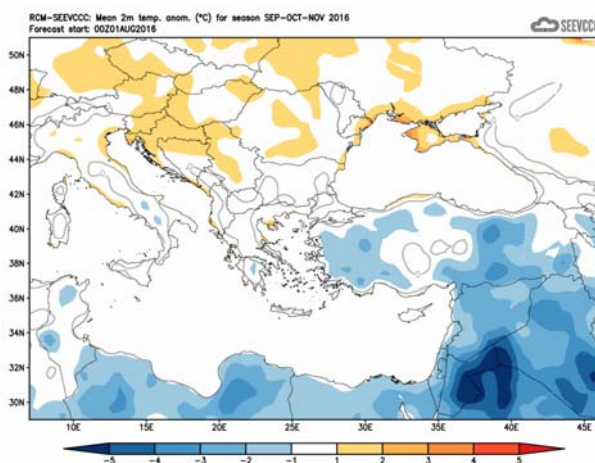
Seasonal weather forecast for the months of September, October and November 2016

General over view of the weather expected to prevail for September, October and November.

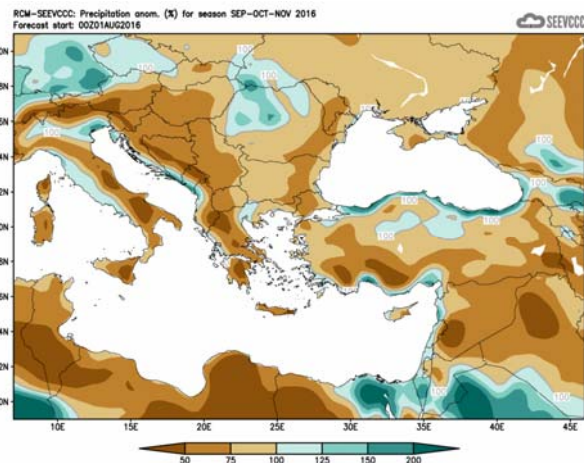
The weather for the following three months, namely **September, October** and **November 2016**, will be presented, with respect to the anomalies of temperature, and accumulated precipitation.

During the period in focus normal temperatures (both maximum and minimum) are declining, suggesting **September** as the hottest month of the period and **November** the period's coldest month. The accumulated precipitation is at its lowest values during September but it rises well during the period. The first month of the period is likely to be climatologically characterized by outbreaks of thunderstorms, initiated from thermal causes over the main plain area or over the mountainous range from orographic uplift. During **October** and mainly during **November** the frequency of baroclinic depressions affecting the area increases significantly, resulting in higher accumulated precipitation. During **November** snow fall over the highest peaks of Troodos range is likely and may be recorded, as in the past. **October** is very unlikely to result in snow, although the first snow of 2000 was recorded on the 24th of **October**.

Specifically, regarding the seasonal forecast for the period of **September, October** and **November 2016**, the temperature will be generally normal. Normal to lower than normal temperature characterizes also the greater part of Asia Minor, the Balkans and Middle East. The amount of the accumulated precipitation over Cyprus is expected to range generally from 75% of normal to normal, except over the eastern part that is expected to range from 50% of normal to 75% of normal and north-western part that is expected to reach 125% of normal.



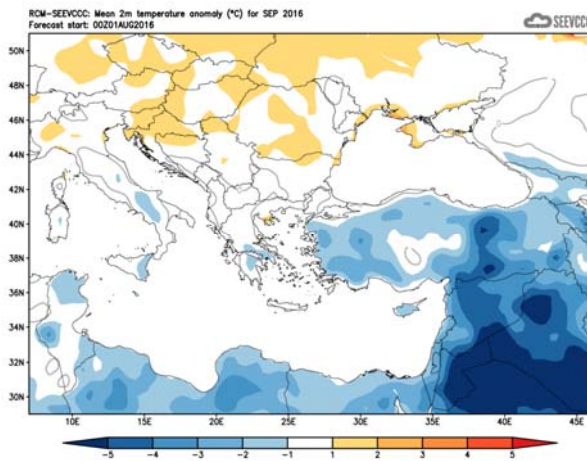
Divergence of temperature from normal from the mean seasonal temperature (°C) for September, October and November



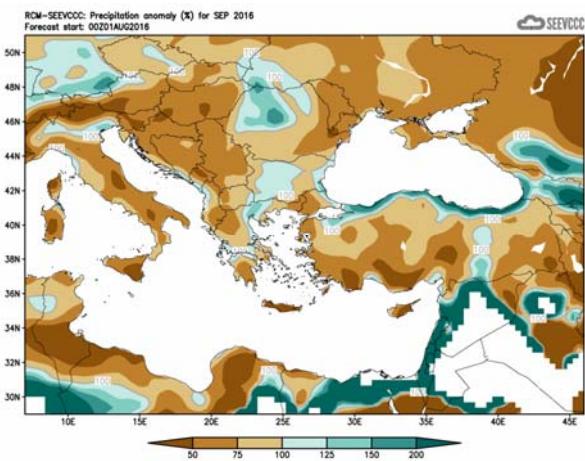
Percentage (%) of the mean seasonal accumulated precipitation compared to the mean normal for September, October and November

The seasonal monthly forecast in detail

The seasonal forecast suggests that **September's** temperature will be generally below normal, by 1 to 2°C. The lower than normal temperature is also a characteristic of the area of Asia Minor and Near and Middle East. The amount of the accumulated precipitation will reach 50% of normal over the northern and southern, it will range between 50% and 75% of normal over northern part and mountainous areas and from 75% of normal to normal over western part.

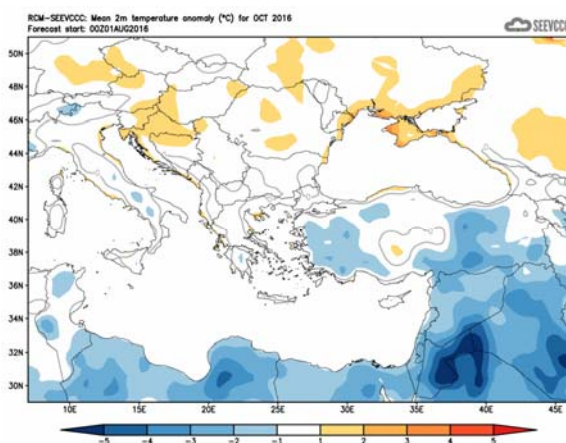


Divergence of the mean monthly temperature (°C)
from normal during September

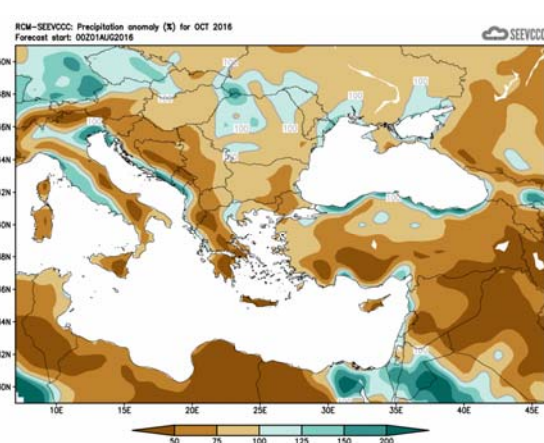


Percentage of the mean monthly precipitation (%)
compared with the normal of September

The seasonal forecast for **October** suggests that temperature will be generally normal. The accumulated precipitation of Cyprus will reach 50% of normal over south and east part and over the rest areas of Cyprus from 75% of normal to normal.

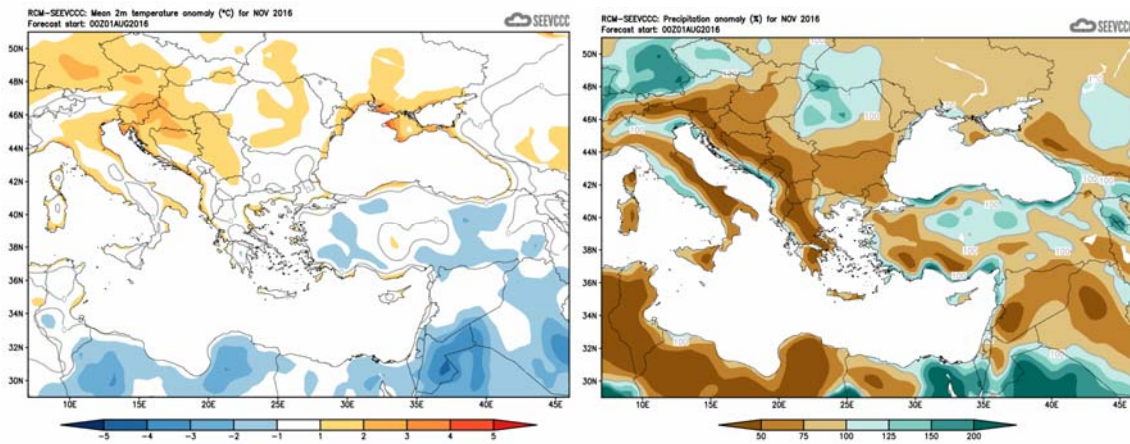


Divergence of the mean monthly temperature (°C)
from normal during October



Percentage of the mean monthly precipitation (%)
compared with the normal of October

The seasonal forecast for **November** suggests that temperature will be generally normal. The accumulated precipitation of November will range from normal to 150% of normal over west, north and mountainous areas and will range from 75% of normal to normal over the rest areas of Cyprus.



Divergence of the mean monthly temperature (°C)
from normal during November

Percentage of the mean monthly precipitation (%)
compared with the normal of November

Normal values of temperature and accumulated precipitation for September, October and November 2016

The normal values of mean maximum, mean minimum temperature and accumulated precipitation are presented below concerning the three months the period of forecast is covering, in order to gain a better view of the normal seasonal climate. The temperature, both maximum and minimum, is on the fall suggesting **September** as the warmest month of the period and **November** as the coldest. On the other hand the accumulated precipitation is increasing significantly from **September** towards **November**, as presented by the climatological data shown on the table below. It is worth noting that **October's** and mainly **November's** accumulated precipitation is significantly higher than **September's** as a result of the reoccurrence/redeveloping of depressions over the area of the east Mediterranean.

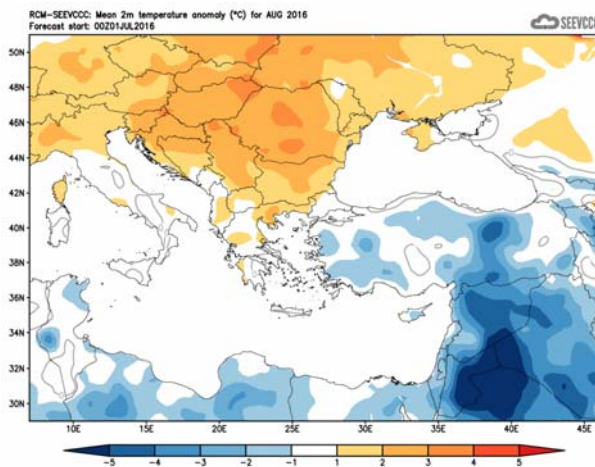
TEMPERATURE AND PRECIPITATION NORMAL VALUES FOR THE PERIOD 1981-2010									
Area Name	MEAN DAILY MAXIMUM TEMPERATURE (°C)			MEAN DAILY MINIMUM TEMPERATURE (°C)			MEAN MONTHLY TOTAL PRECIPITATION (mm)		
	September	October	November	September	October	November	September	October	November
NORTH COAST	30.1	26.4	21.7	19.2	15.1	12.2	4.0	30.3	58.6
WEST COAST*	29.0	26.4	22.4	19.1	15.4	12.9	3.6	27.4	52.6
MOUNTAINOUS AREAS	24.6	19.2	12.8	14.9	10.9	6.1	10.7	34.4	93.8
INLAND*	33.6	28.4	22.1	18.8	15.2	10.4	12.2	20.7	43.2
SOUTH COAST	30.9	27.8	22.6	19.8	15.7	12.4	4.3	16.0	46.8
EAST COAST**	31.9	28.5	22.4	19.6	15.7	11.8	2.9	19.9	44.0

* West Coast and Inland Values cover the period 1983-2010

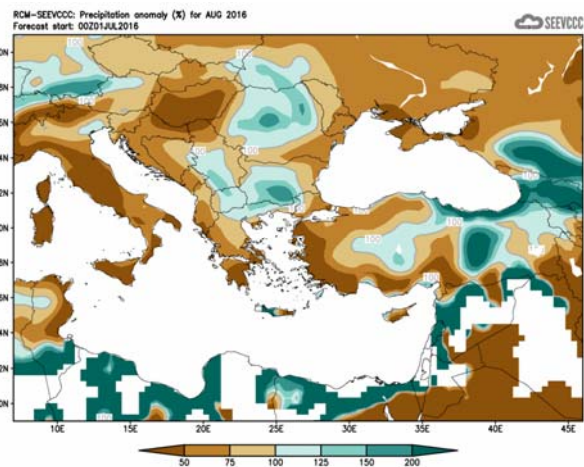
** East Coast Temperature Values cover the period 1981-2007

Evaluation of August's seasonal forecast for the area of Cyprus

August's seasonal forecast suggested that temperature over Cyprus would be generally normal, except southern and eastern part that it would be by 1 to 2°C below normal. The amount of the accumulated precipitation over most areas of Cyprus was expected to range between 50% and 75% of normal, over the southern and eastern part was expected to range 50% of normal and below and over northern and western part between normal and 125% of normal.



Divergence of the mean monthly temperature (°C) from normal during August



Percentage of the mean monthly precipitation (%) compared with the normal of August

Concerning the models evaluation for **August** a general judgment is that the model did not perform so well concerning the temperature. Most of the mean daily maximum and mean daily minimum temperatures were above normal, except the station of Achna (Dasaki) that the mean daily maximum temperature was below normal and the mean minimum temperature of Prodromos station that was also below normal.

From the records kept in the archives of the Department of Meteorology during the period of 2nd to the 5th of **August**, the maximum temperatures of Polis Chrysochous station were diverted by 4°C higher than the normal maximum of the station. Generally, the highest maximum of the month was recorded on 8th of **August** over the inland station of Athalassa and it was 40.4°C with the normal being 36.9°C. For a sequence of days EMMA warning for high temperature was issued.

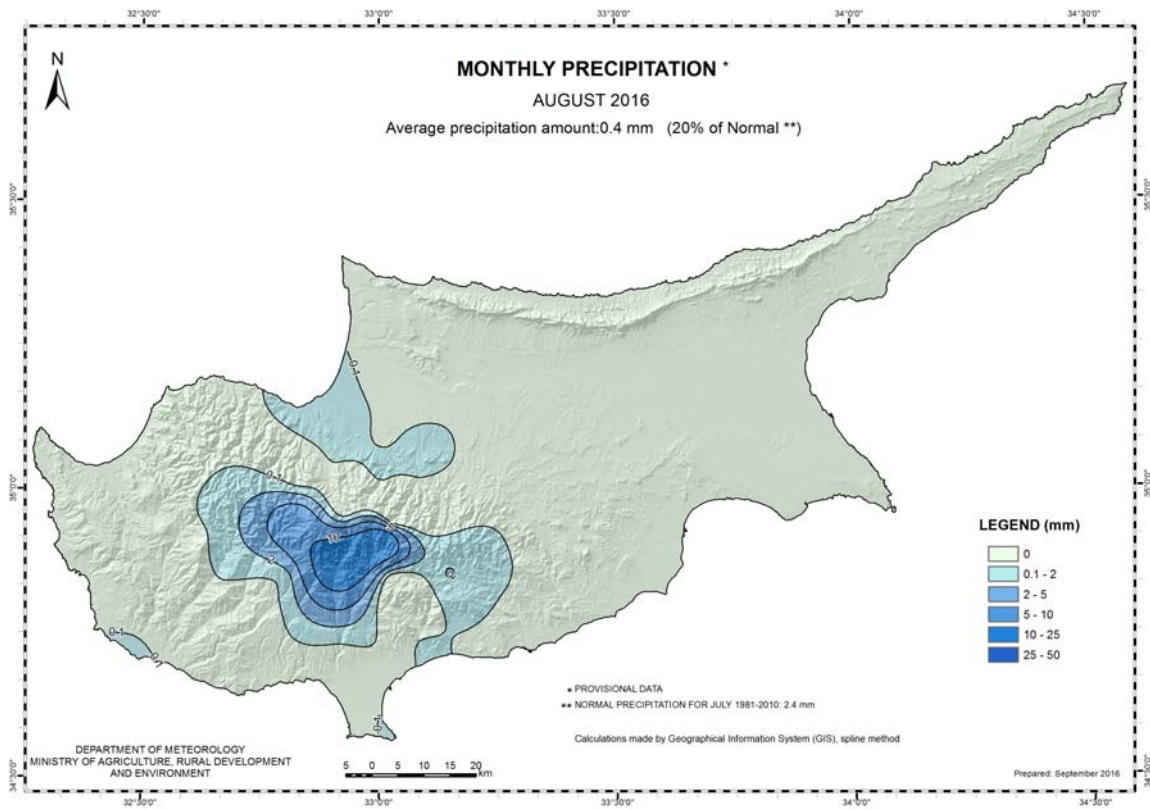
The parameter of the accumulated precipitation is not going to be discussed, since precipitation activity results in random accumulation due to thundery activity.

TEMPERATURE AND PRECIPITATION PROVISIONAL DATA FOR AUGUST 2016														
St. No.	Station Name	Mean Daily Maximum Temperature (°C)	Normal Value (1981-2010)	Difference from Normal Value	Highest Daily Maximum Temperature (°C)	Lowest Daily Maximum Temperature (°C)	Mean Daily Minimum Temperature (°C)	Normal Value (1981-2010)	Difference from Normal Value	Lowest Daily Minimum Temperature (°C)	Highest Daily Minimum Temperature (°C)	Monthly Total Precipitation (mm)	Normal Value (1981-2010)	Difference from Normal Value
41	POLIS CHRYSOCHOUS	35.0	33.3	1.7	38.6	31.8	23.1	21.5	1.6	21.0	26.3	0.0	0.0	0.0
82*	PAFOS (AIRPORT)	31.8	30.5	1.3	33.1	30.6	22.3	21.1	1.2	20.5	24.7	0.2	0.0	0.2
225	PRODROMOS (C.F.C.)	28.7	28.0	0.7	31.3	23.1	17.6	18.1	-0.5	13.3	20.8	8.2	12.0	-3.8
666*	ATHALASSA (RADIOSONDE)	37.7	36.9	0.8	40.4	34.8	23.1	21.9	1.2	20.6	27.2	0.0	1.8	-1.8
731	LARNAKA (AIRPORT)	33.4	32.9	0.5	36.5	31.8	23.5	22.3	1.2	21.3	25.3	0.0	0.3	-0.3
800**	ACHNA (DASAKI)	32.7	33.5	-0.8	35.8	30.7	22.2	22.0	0.2	19.8	25.2	0.0	0.1	-0.1

* Pafos' and Athalassa's Station Normal Values cover the period 1983-2010
** Achna's Temperature Normal Values cover the period 1981-2007

= VALUES FROM AUTOMATIC WEATHER STATION

For the purpose of better visualization of **August** accumulated precipitation, a chart of Cyprus with the total preliminary accumulated precipitation is presented.



A Cyprus chart with the normal (period 1981 to 2010) accumulated precipitation for the month of **August** is also presented.

